



## CONTACT

**DREW ULRICK, SIOR**  
509.606.5055  
drew@tokcommercial.com

## HIGHLIGHTS

- On-site Parking
- Pylon Signage
- Carpet and paint budget available
- Adjacent to North Central High School
- Combined spaces - 3,533 SF

## DETAILS

SPACE	SIZE	RATE
Suite 101	905 SF	\$15.00/SF
Suite 102	1,540 SF	\$15.00/SF
Suite 103	1,088 SF	\$15.00/SF

<b>BLDG TYPE</b>	Office	<b>ZONING</b>	OR - Office Residential
<b>BLDG SIZE</b>	16,594 SF	<b>LEASE TYPE</b>	Modified Gross
<b>LOT SIZE</b>	0.55 Acres		

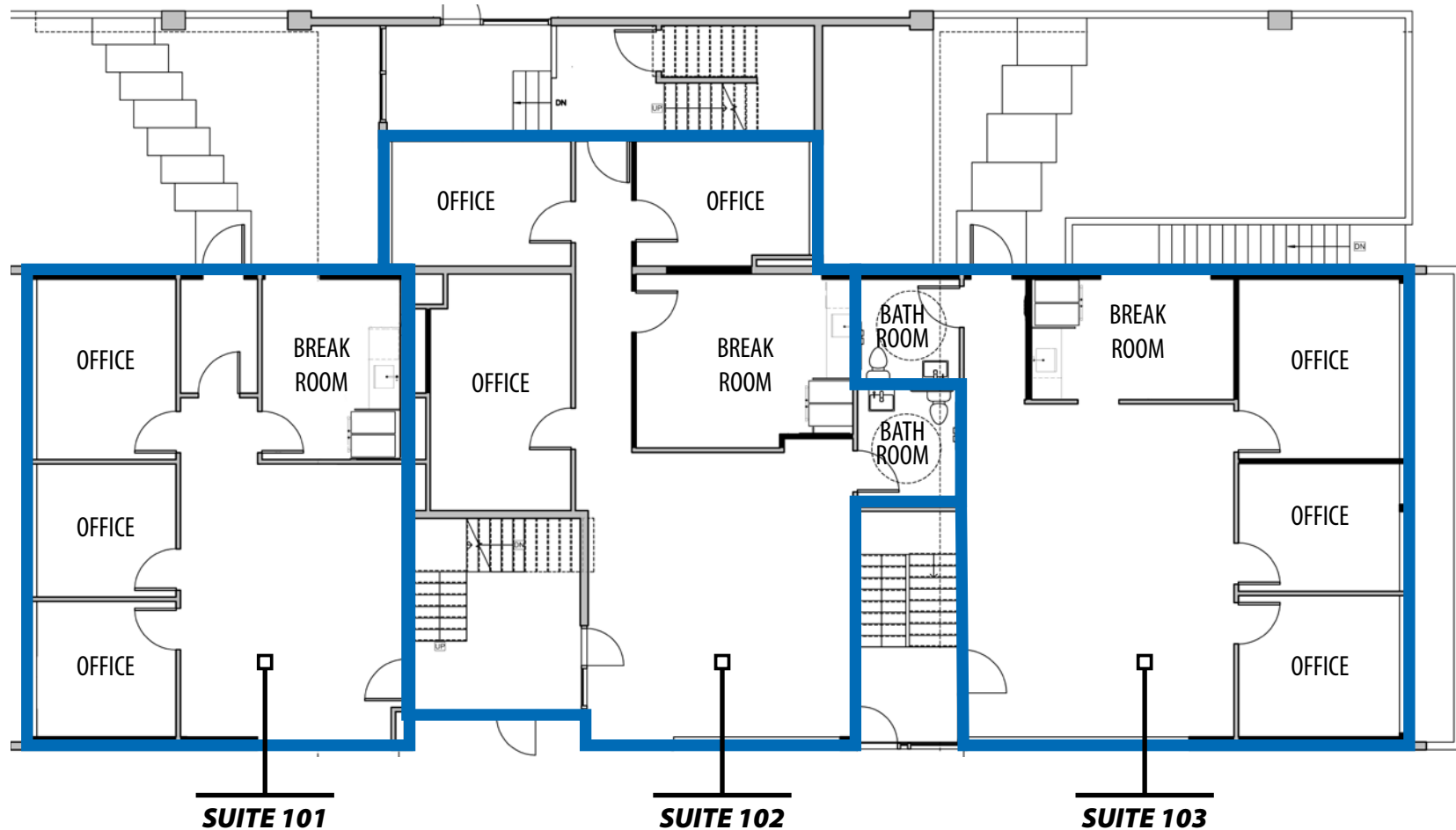
UPDATED: 12.4.2025

THIS PROPERTY IS EXCLUSIVELY MARKETING BY TOK INLAND NORTHWEST LLC DBA TOK COMMERCIAL

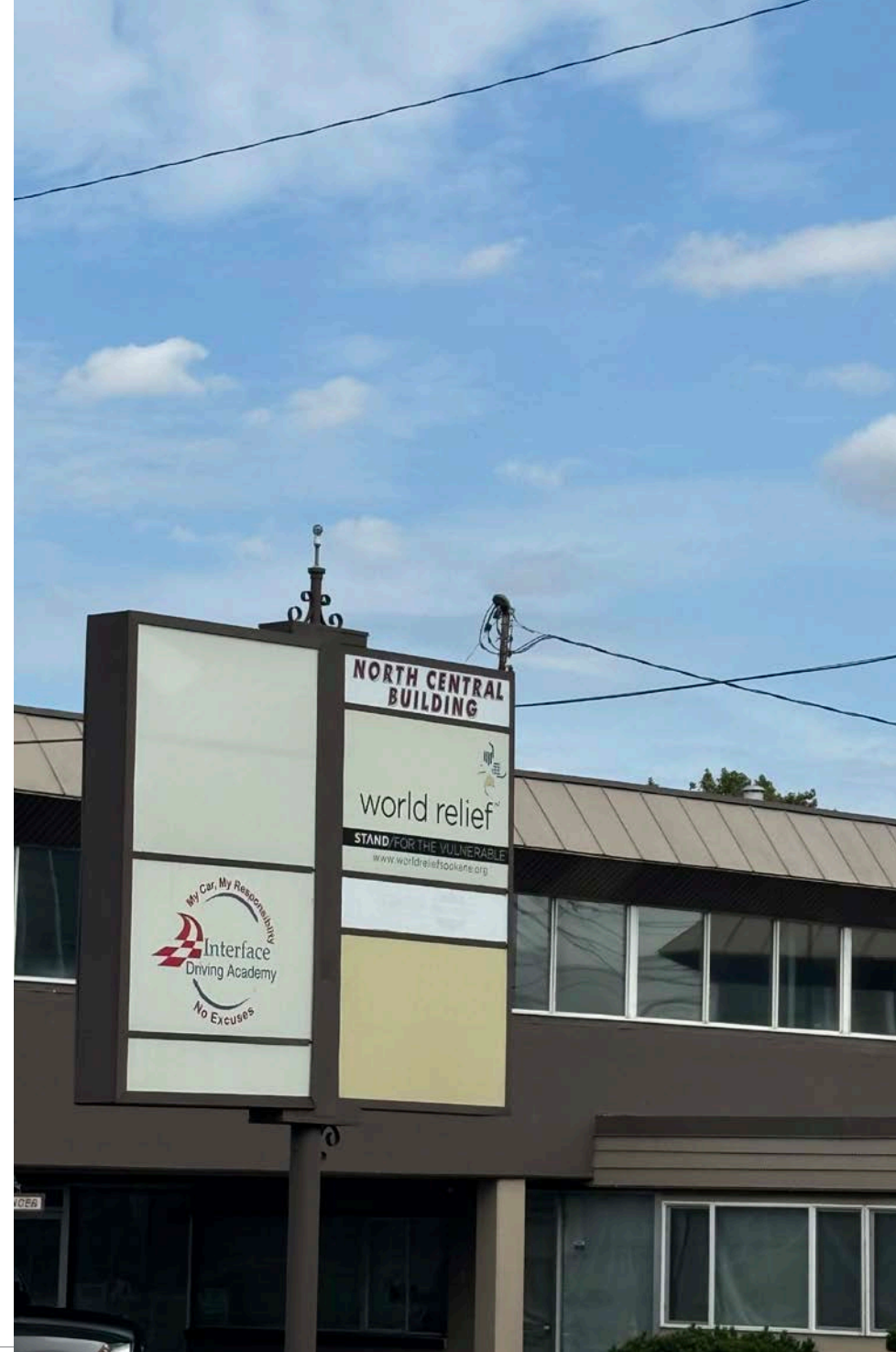
This information was obtained from sources believed reliable but cannot be guaranteed. Any opinions or estimates are used for example only.

SPACE	SIZE	RATE
Suite 101	905 SF	\$15.00/SF
Suite 102	1,540 SF	\$15.00/SF
Suite 103	1,088 SF	\$15.00/SF

# FLOOR PLANS







1522 N WASHINGTON ST

TOXCOMMERCIAL.COM



# SITE MAP

EASY ACCESS OFFICE BUILDING



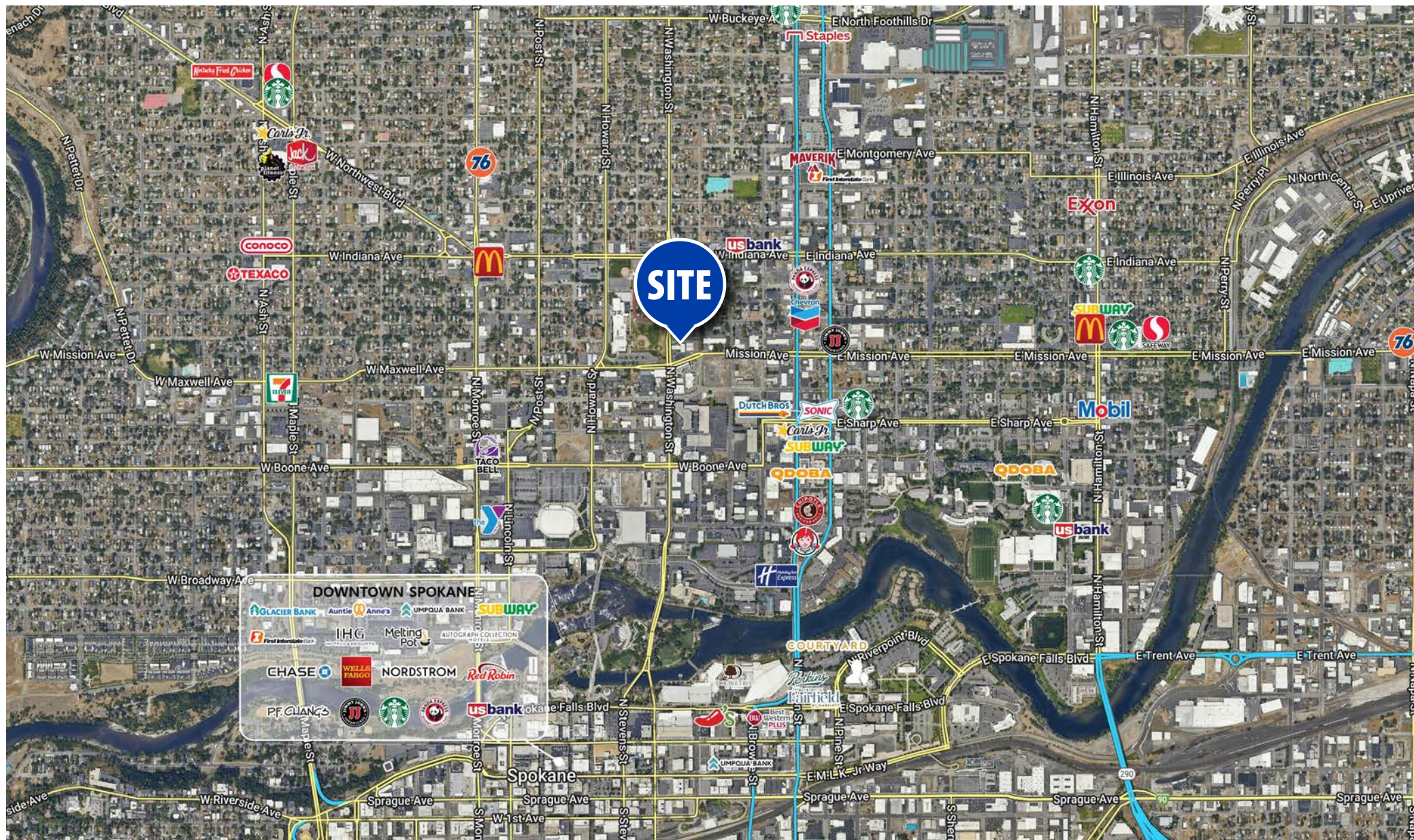
1522 N WASHINGTON ST

**TOX**COMMERCIAL.COM



# AERIAL MAP

CLOSE TO DOWNTOWN SPOKANE



1522 N WASHINGTON ST

**TOX**COMMERCIAL.COM