

SALE

PRIME WEST BERKELEY MIXED USE PROPERTY

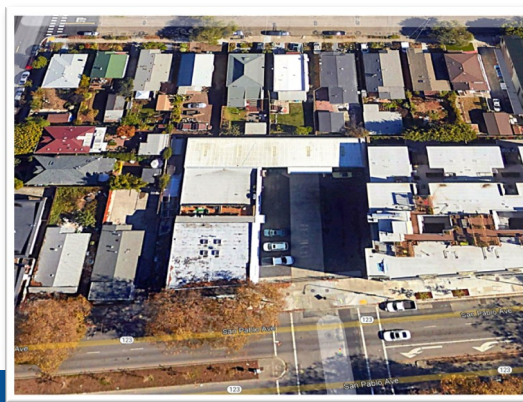


2733-37 SAN PABLO AVENUE
BERKELEY CA 94702

\$2,750,000



Located at the signalized intersection of Grayson Street and San Pablo Avenue, ±10,800 SF of mixed-use buildings on a large ±19,117-SF parcel with ample fenced and secure off-street parking. Main building is ±5,000 SF on the ground floor with two 2-bedroom apartments upstairs (currently vacant). In addition there is a high ceiling WH type building at the rear of ±3,500 SF. Main building has heavy power due to its historical use as a machine shop. Wide glass frontage on San Pablo Avenue with excellent signage opportunities. Potential opportunity for future redevelopment. 10% down SBA financing available for owner user buyers.



[PAGE 2: PHOTOS](#)

[PAGE 3: PLOT MAP](#)

[PAGE 4: PROXIMITY AERIAL](#)

Erik Housh

510-450-1410

ehoush@mrecommercial.com

CA DRE No: 00884250

Francis Griffin

510-450-1405

fgriffin@mrecommercial.com

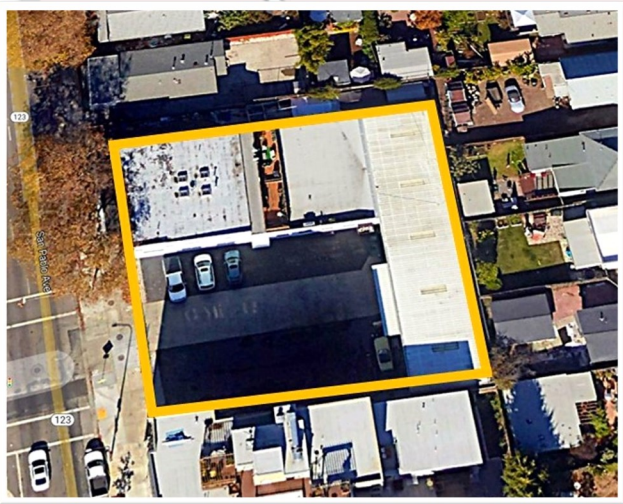
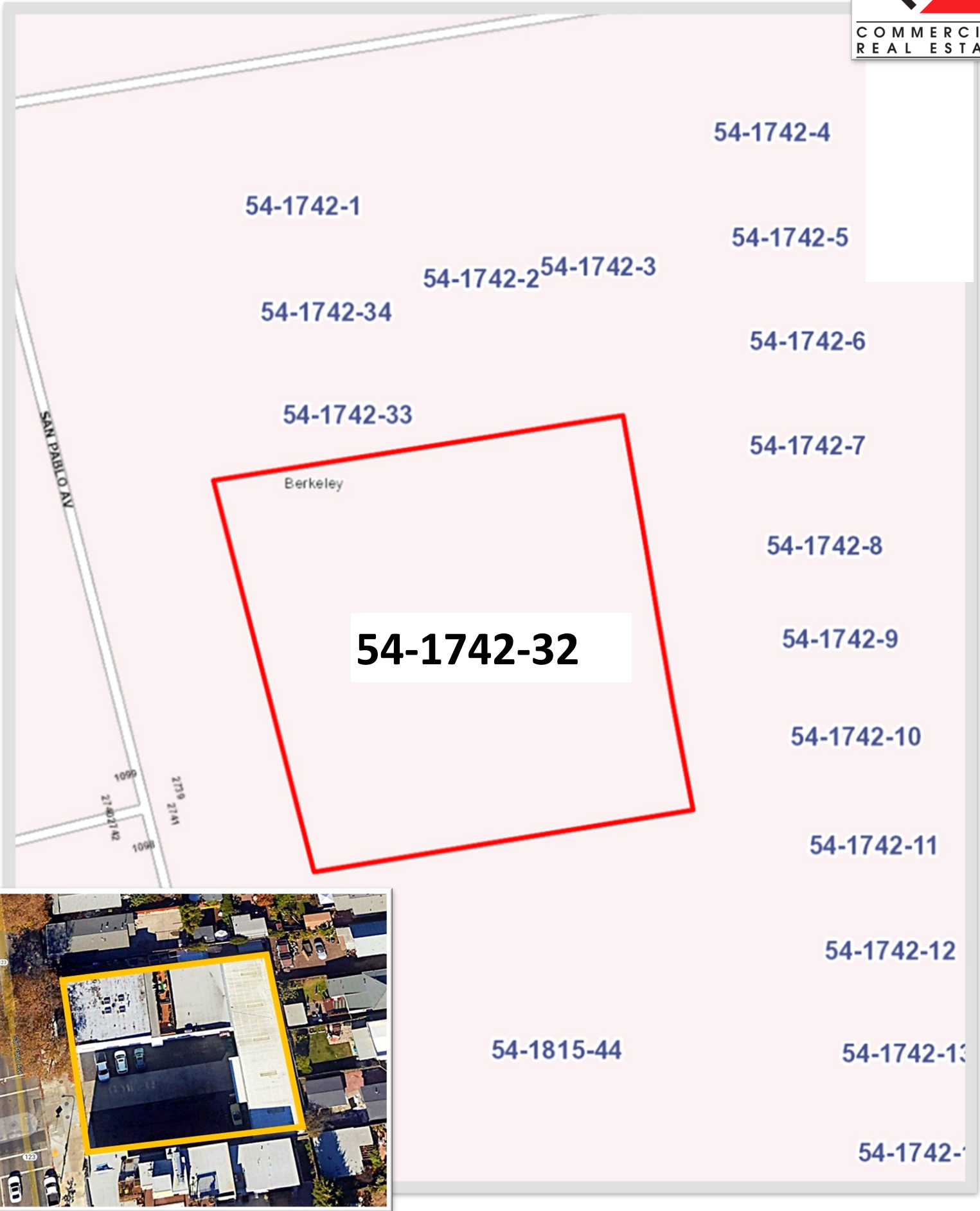
CA DRE No: 02016713

To Show

Please Contact Listing Agents

PHOTOS





PROXIMITY

