

**579-583 Central Ave & 1844-1876 First Street**  
**Retail for Lease**  
**Highland Park, Illinois**



- 2,327-6,151 square feet of retail available
- Most highly trafficked intersection in downtown Highland Park
- Private parking lot
- Across the street from the Metra Train
- Prominent frontage on Central Ave and First St
- Excellent Signage Opportunities
- 16,000 Daytime Employees
- 50,000 people in 3-mile radius
- Population of 29,800
- Average HH Income \$138,000
- Approximately 15,000 VPD





bluemercury  
makeup • skincare • spa

WALKER BROS.  
The Original Pancake House

Uncle DAN'S  
OUTDOOR STORE EST. 1972

BYG  
BOUTIQUE YOGA  
GOLF

Orangetheory  
FITNESS

POTBELLY  
SANDWICH SHOP

Blue Orchid  
spa

Panera  
BREAD

Central Avenue

CAMPUS & COLORS

sweet home gelato

ROCK N RAGS  
MUSIC + FASHION

PRINCETON  
FRAME & ART GALLERY

Allura  
Fine Jewelers

True Juice  
SPA

CPR  
CELL PHONE REPAIR

OVER  
TOP

Michael's  
Lou Mahati's  
PIZZERIA

Once Upon a Bagel

DQ

BLAZE PIZZA

LORI'S  
The Sole of Chicago

@properties

3,951 SF DIV

2300-6,151 SF DIV

Madame Zuzu's  
Tea House

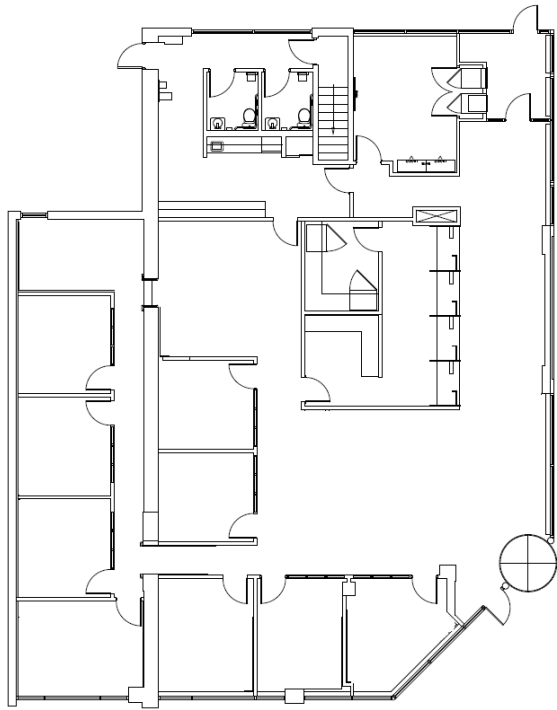
First Street

First Bank of Highland Park  
Where Community is First!

First Bank of Highland Park

© 2018 Google

579-83 Central Avenue



1844-76 First Street

