

# FOR LEASE

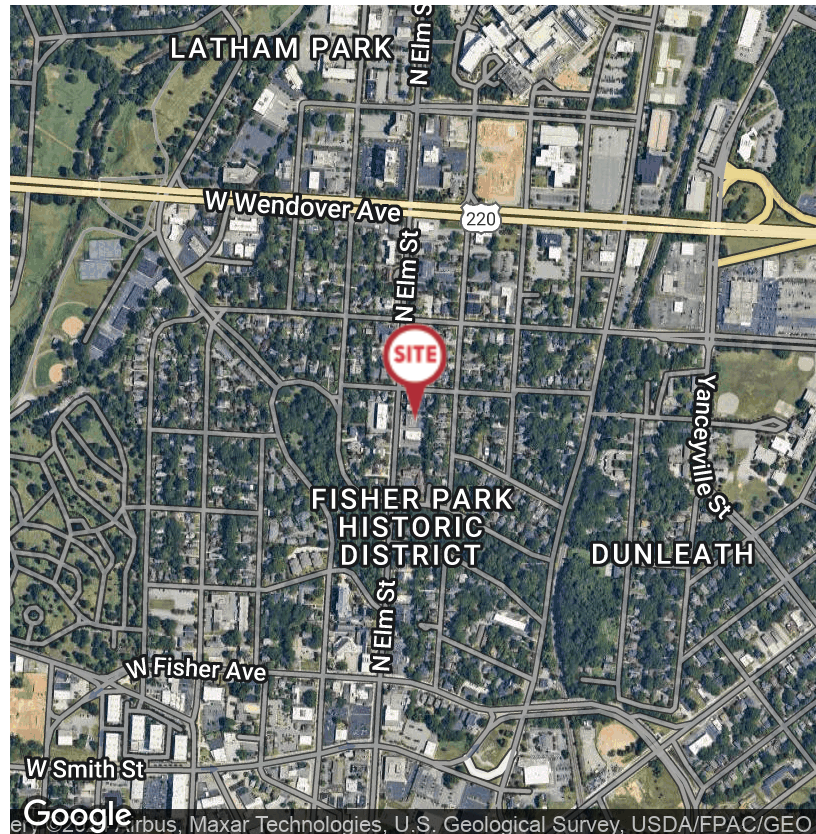
826 N Elm Street, Greensboro, NC 27401



## Office | 4,200 SF

- Close proximity to Downtown (Historic Fisher Park)
- Excellent North Elm St visibility and signage (available)
- Total Building: 8,400 sf
- Available space: 4,200 sf (second floor)
- Professional Tenant Improvements (previous use, law firm)
- Free on-sight parking
- Below market Full Service Lease Rate
- Immediate occupancy (flexible lease term)

**LEASE RATE \$16.50 SF (FULL SERVICE)**



Richard Clarke  
+1 336 358 4626  
rclarke@naipt.com

No Warranty Or Representation, Express Or Implied, Is Made As To The Accuracy Of The Information Contained Herein, And The Same Is Submitted Subject To Errors, Omissions, Change Of Price, Rental Or Other Conditions, Prior Sale, Lease Or Financing, Or Withdrawal Without Notice, And Of Any Special Listing Conditions Imposed By Our Principals. No Warranties Or Representations Are Made As To The Condition Of The Property Or Any Hazards Contained Therein Are Any To Be Implied.

# FOR LEASE

826 N Elm Street, Greensboro, NC 27401

**NAI**Piedmont Triad



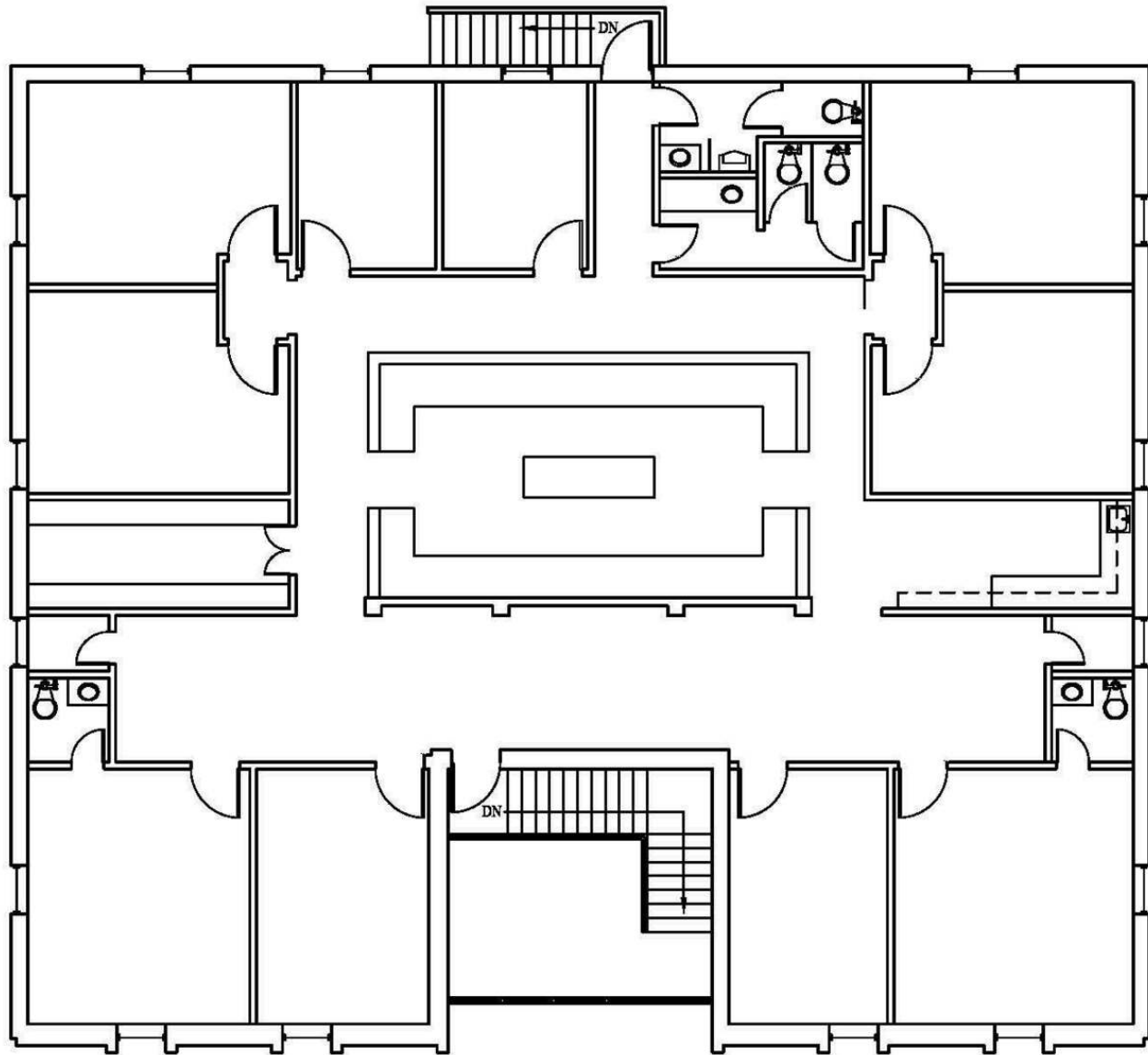
✉ **Richard Clarke**  
+1 336 358 4626  
rclarke@naipt.com

No Warranty Or Representation, Express Or Implied, Is Made As To The Accuracy Of The Information Contained Herein, And The Same Is Submitted Subject To Errors, Omissions, Change Of Price, Rental Or Other Conditions, Prior Sale, Lease Or Financing, Or Withdrawal Without Notice, And Of Any Special Listing Conditions Imposed By Our Principals. No Warranties Or Rep-resentations Are Made As To The Condition Of The Property Or Any Hazards Contained Therein Are Any To Be Implied.

**NAI**Piedmont Triad

**FOR LEASE**

826 N Elm Street, Greensboro, NC 27401



**SECOND FLOOR**

**826 NORTH ELM STREET**