



EQT | EXETER



Heritage Industrial Center

3330, 3360 and 3390 Heritage Road, Chula Vista, CA

Building Size: 202,760 SF | 175,615 SF of Industrial Space Available

VISIT [EQTEXETER.COM](https://eqtexeter.com)

Heritage Industrial Center

3330, 3360 and 3390 Heritage Road, Chula Vista, CA

Building Size: 202,760 SF | Building Availability: 175,615 SF



Property Specifications

- 175,615 SF across three (3) buildings
- Turnkey space: LED lighting and dock levelers underway
- 28' - 32' clear height at 1st column
- ESFR Fire Sprinklers
- Twenty Four (24) Dock High Doors
- Eleven (11) Grade Level Doors
- 287 Parking Spaces - 1.4/1,000 Parking
- 6" floor slabs
- Concrete truck courts, drive aisles and parking areas
- Fenced and secured yard potential
- Skylights throughout the spaces
- Total Power: between 3-4,000 Amps, 480/277 Volt, 3PH Power



Heritage Industrial Center

3330 Heritage Road, Chula Vista, CA

Building Size: 40,740 SF | Building Availability: 40,740 SF

Building Specifications

- 40,740 SF Available
- 4,320 SF spec office pod completed
- Turnkey space: LED lighting and dock levelers underway
- 28' clear height at 1st column
- ESFR Fire Sprinklers
- Four (4) Dock High doors
- One (1) Grade Level Door
- 63 Parking Spaces - 1.5/1,000 Parking
- 6" floor slabs
- Concrete truck courts, drive aisles and parking areas
- Fenced and secured yard potential
- Skylights throughout the space

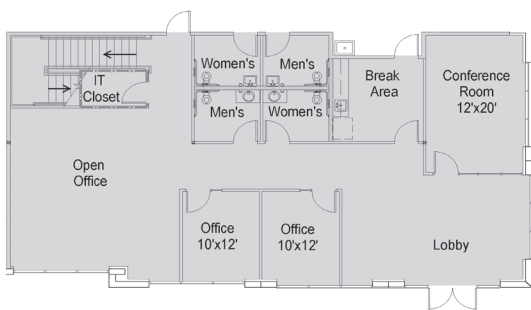


Heritage Industrial Center

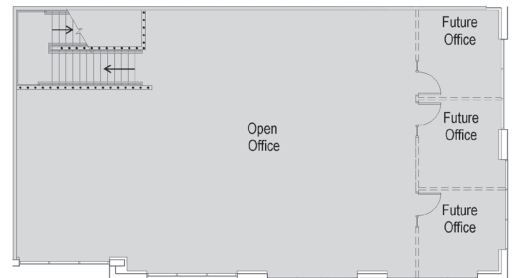
3330 Heritage Road, Chula Vista, CA

Building Size: 40,740 SF | Building Availability: 40,740 SF

Building Plans



Building B & C - First Floor Office Plan
+/- 2,160 SF



Building B & C - Second Floor Office Plan
+/- 2,160 SF

Heritage Industrial Center

3360 Heritage Road, Chula Vista, CA

Building Size: 56,470 SF | Building Availability: 29,325 SF

Building Specifications

- 29,325 SF Available
- 4,320 SF spec office pod completed
- Turnkey space: LED lighting and dock levelers underway
- 28' clear height at 1st column
- ESFR Fire Sprinklers
- Four (4) Dock High doors
- One (1) Grade Level Door
- 1.4/1,000 Parking
- 6" floor slabs
- Concrete truck courts, drive aisles and parking areas
- Fenced and secured yard potential
- Skylights throughout the space

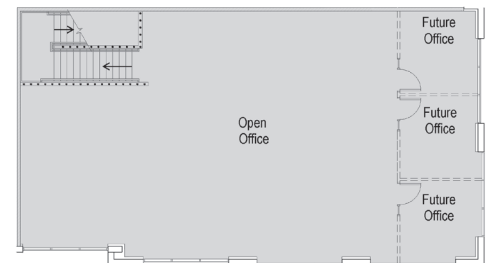
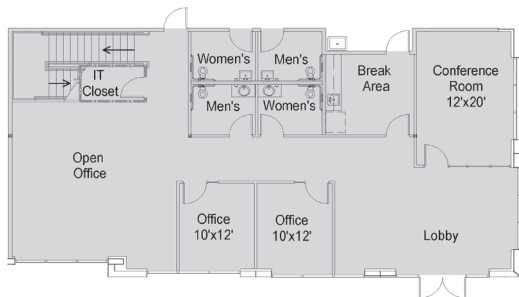


Heritage Industrial Center

3360 Heritage Road, Chula Vista, CA

Building Size: 56,470 SF | Building Availability: 29,325 SF

Building Plans



Building B & C - First Floor Office Plan
+/- 2,160 SF

Building B & C - Second Floor Office Plan
+/- 2,160 SF

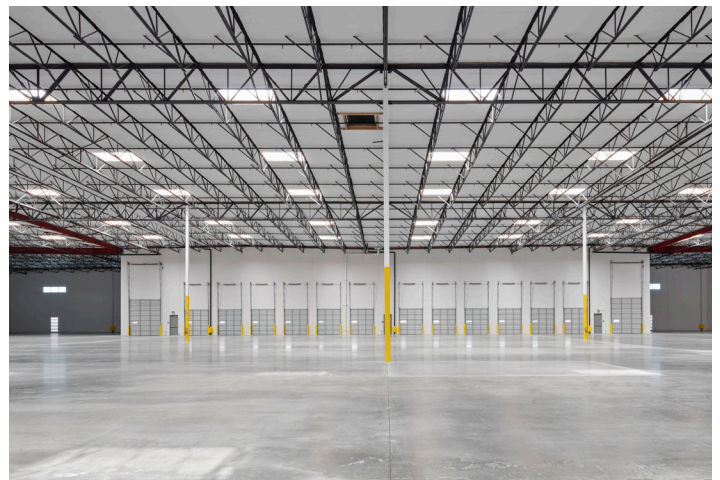
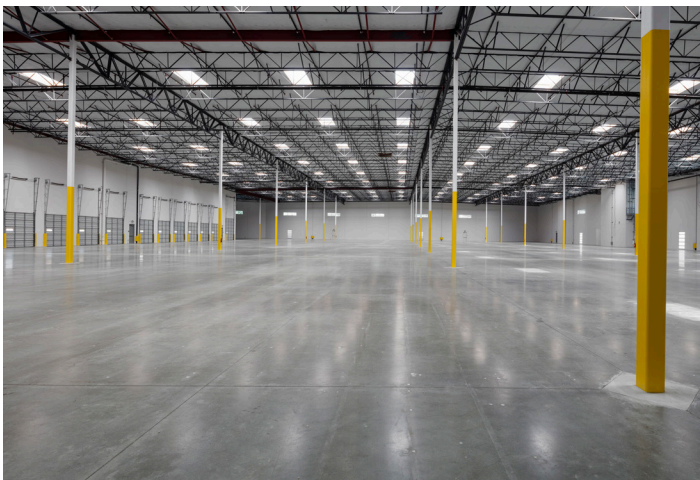
Heritage Industrial Center

3390 Heritage Road, Chula Vista, CA

Building Size: 105,550 SF | Building Availability: 105,550 SF

Building Specifications

- 105,550 SF Available
- 5,000 SF spec office pod completed plus 2,500 SF Mezz
- Turnkey space: LED lighting and dock levelers underway
- 32' clear height at 1st column
- ESFR Fire Sprinklers
- Twelve (12) Dock High Doors
- Two (2) 12' x 14' Grade Level Doors
- 132 Parking Spaces (1.4/1,000 Parking Ratio)
- 6" floor slabs
- Concrete truck courts, drive aisles and parking areas
- Fenced and secured yard potential
- Skylights throughout the space

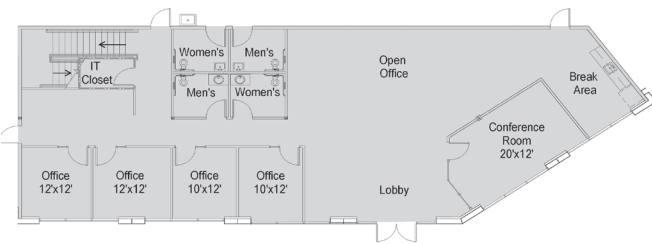


Heritage Industrial Center

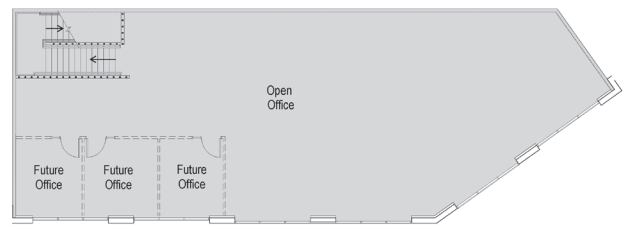
3390 Heritage Road, Chula Vista, CA

Building Size: 105,550 SF | Building Availability: 105,550 SF

Building Plans



Building A - First Floor Office Plan
+/- 2,650 SF



Building A - Second Floor Office Plan
+/- 2,650 SF