

CALVERTON

11750 Beltsville Drive, Calverton, MD 20705



- ◆ **2,775 - 8,235 SF Available Office Space**
- ◆ **Easy access to I-95, I-495, US-29, and the new Inter County Connector**
- ◆ **Walking distance to Day Care, Grocery Store, Pharmacy, Hotels, Gas Station, Bank, Restaurants, and Calverton Shopping Center**
- ◆ **Fiber optic connectivity: Comcast and Verizon FIOS**
- ◆ **Free surface parking**
- ◆ **Excellent rates**



For more information call:

Rich Cohen
(301) 622-9300 x114
rcohen@siterealtygroup.com

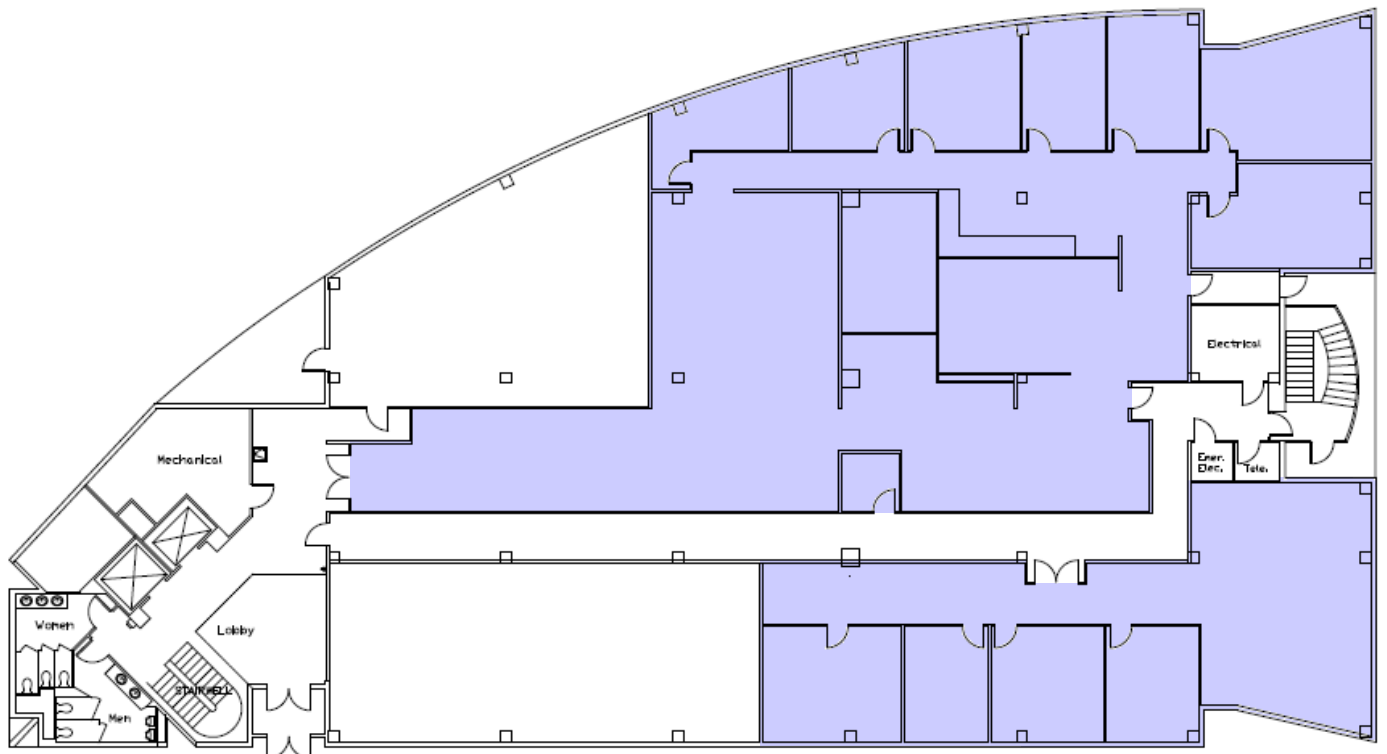


www.siterealtygroup.com



CALVERTON

11750 Beltsville Drive, Calverton, MD 20705



Suite 110 - 8,235 SF

Suite 120 - 2,775 SF

For more information call:

Rich Cohen

(301) 622-9300 x114

rcohen@siterealtygroup.com

www.siterealtygroup.com

