

TOK

COMMERCIAL

EAGLES GATE VIEW AT LAKEMOOR

79 E. EAGLES GATE DR | EAGLE, ID 83616

CLASS A OFFICE SPACE

CONTACT

AL MARINO, SIOR
208.947.0811
al@tokcommercial.com

KEKAULA KANIHO
208.947.0853
kekaula@tokcommercial.com

HIGHLIGHTS

Contemporary design with **expansive glass** and **sweeping views** of the Boise Foothills.

Modern, 15,475 SF 2-story office building.

High visibility on Eagle Road, with prominent **monument signage**.

Showers facilities.

Easy access to **Boise River and Greenbelt**.

Located just **4 minutes** north of the Eagle Road and Chinden Boulevard intersection.

DETAILS

Submarket:	Eagle
Bldg Class:	Class A
Bldg Size:	15,475 SF
Available Space:	Space C - 3,137 SF
Condition:	TI Ready
Parking:	4.5/1000
Lease Type:	NNN
Lease Rate:	\$45.00 SF/yr

UPDATED: 1.13.2026

THIS PROPERTY IS EXCLUSIVELY MARKED BY TOK BOISE LLC DBA TOK COMMERCIAL

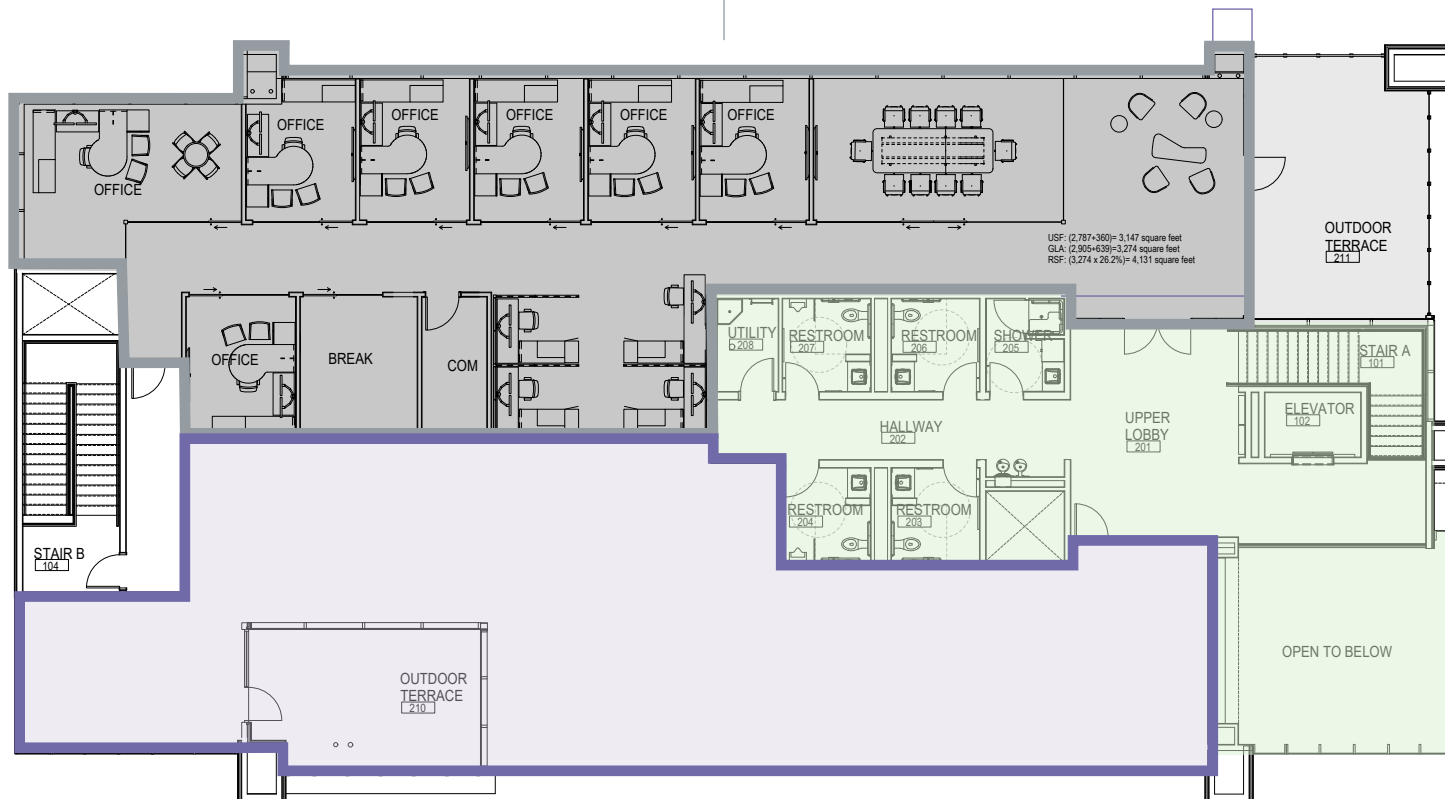
This information was obtained from sources believed reliable but cannot be guaranteed. Any opinions or estimates are used for example only.

TOKCOMMERCIAL.COM

LEVEL TWO

FLOOR PLAN

SPACE D | LEASED!



COMMON AREA

SPACE C | 3,137 SF

UPDATED: 1.13.2026

THIS PROPERTY IS EXCLUSIVELY MARKETING BY TOK BOISE LLC DBA TOK COMMERCIAL

This information was obtained from sources believed reliable but cannot be guaranteed. Any opinions or estimates are used for example only.

TOKCOMMERCIAL.COM

CONCEPT RENDERINGS



UPDATED: 1.13.2026

THIS PROPERTY IS EXCLUSIVELY MARKETING BY TOK BOISE LLC DBA TOK COMMERCIAL

This information was obtained from sources believed reliable but cannot be guaranteed. Any opinions or estimates are used for example only.

TOKCOMMERCIAL.COM

CONCEPT RENDERINGS



FRONT PERSPECTIVE



ENTRY PERSPECTIVE



REAR PERSPECTIVE

UPDATED: 1.13.2026

THIS PROPERTY IS EXCLUSIVELY MARKETING BY TOK BOISE LLC DBA TOK COMMERCIAL
This information was obtained from sources believed reliable but cannot be guaranteed. Any opinions or estimates are used for example only.

TOKCOMMERCIAL.COM

[illegible]

THIS PROPERTY IS EXCLUSIVELY MARKETING BY TOK BOISE LLC DBA TOK COMMERCIAL
This information was obtained from sources believed reliable but cannot be guaranteed. Any opinions or estimates are used for example only.



UPDATED: 1.13.2026

THIS PROPERTY IS EXCLUSIVELY MARKETING BY TOK BOISE LLC DBA TOK COMMERCIAL

This information was obtained from sources believed reliable but cannot be guaranteed. Any opinions or estimates are used for example only.



LAKEMOOR, EAGLE, IDAHO

Lakemoor is centrally located in the heart of Eagle, Idaho, just off of Eagle Road. Described as “a community with the unique ability to take your breath away, even after you’ve moved in.” Despite its fantastic location, close to both restaurants and shopping, the community is a world away.

Homes in Lakemoor Eagle, offer residents well-landscaped greenbelts, gorgeous gardens and numerous water features. A family-oriented subdivision, Lakemoor streets are ideal for safely walking the family dog and enjoying a peaceful bike ride with a spectacular view of the Boise foothills. This gated neighborhood provides security alongside its awe-inspiring atmosphere. [Source](#)


LAKEMOOR

TOK
COMMERCIAL

Branbury
Golf Course

Chinden Blvd

27,200 VPD

S Eagle Rd 39,500 VPD

44,300 VPD



LAKEMOOR

SITE



27,400 VPD



Hobbie Creek
Park

4 MINUTES
TO HWY 20/26

22 MINUTES
TO DOWNTOWN BOISE

14 MINUTES
TO I-84

**SURROUNDED BY POPULAR
RETAILERS & AMENITIES!**

UPDATED: 1.13.2026

THIS PROPERTY IS EXCLUSIVELY MARKETING BY TOK BOISE LLC DBA TOK COMMERCIAL

This information was obtained from sources believed reliable but cannot be guaranteed. Any opinions or estimates are used for example only.

TOKCOMMERCIAL.COM



EAGLES GATE VIEW AT LAKEMOOR

79 E. EAGLES GATE DRIVE, EAGLE, ID 83616

AL MARINO, SIOR
208.947.0811
al@tokcommercial.com

KEKAULA KANIHO
208.947.0853
kekaula@tokcommercial.com