



Colliers

Accelerating success.

For Lease

Park Medical Complex
Up to 30,823 SF

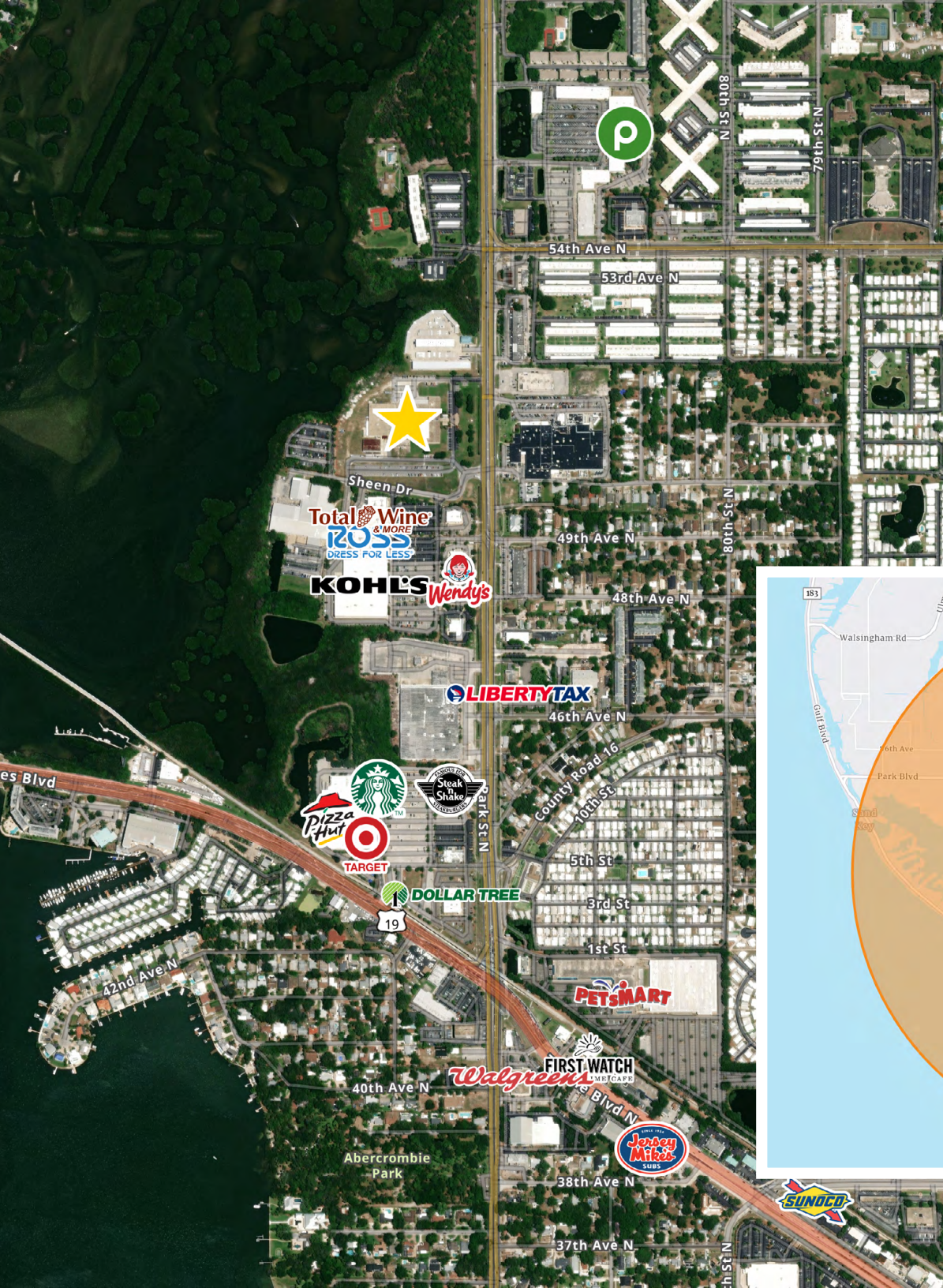
5000 Park St. N.
St Petersburg, FL 33709

Juan Vega

Executive Vice President
Healthcare Services
+1 813 871 8516
juan.vega@colliers.com

Christina Burd

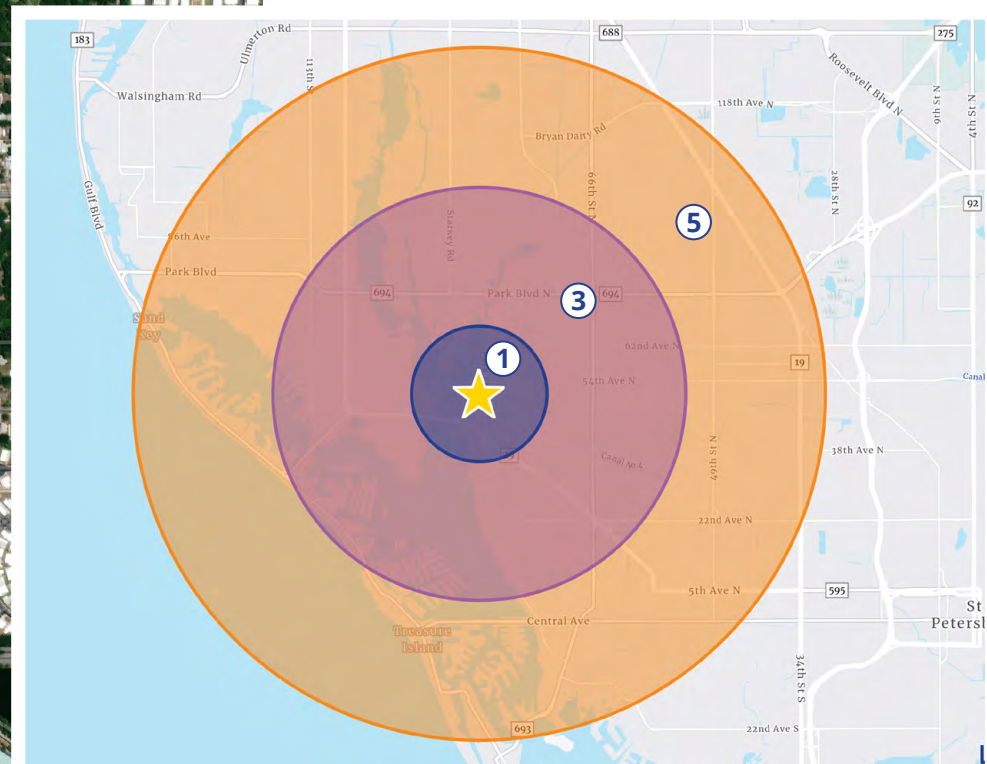
Associate
Office Services
+1 813 771 0554
christina.burd@colliers.com



Property *Highlights*

- 48,490 SF Warehouse
- 3/1,000 Parking Ratio
- \$14.50 Net of Electric
- 13.7 FT. Clear Height
- Power: 480V 3 Phase to 110/220
- 1 Office with Load-Bearing Roof
- 1 Truck Well
- 2 Grade Level Doors
- Additional Loading Door with Limited Access

1/3/5 Mile Radius Map



Availabilities

Suite 1

17,667 SF Contiguous

Suite 1A

6,579 SF

- Grade Level Door

Suite 1B

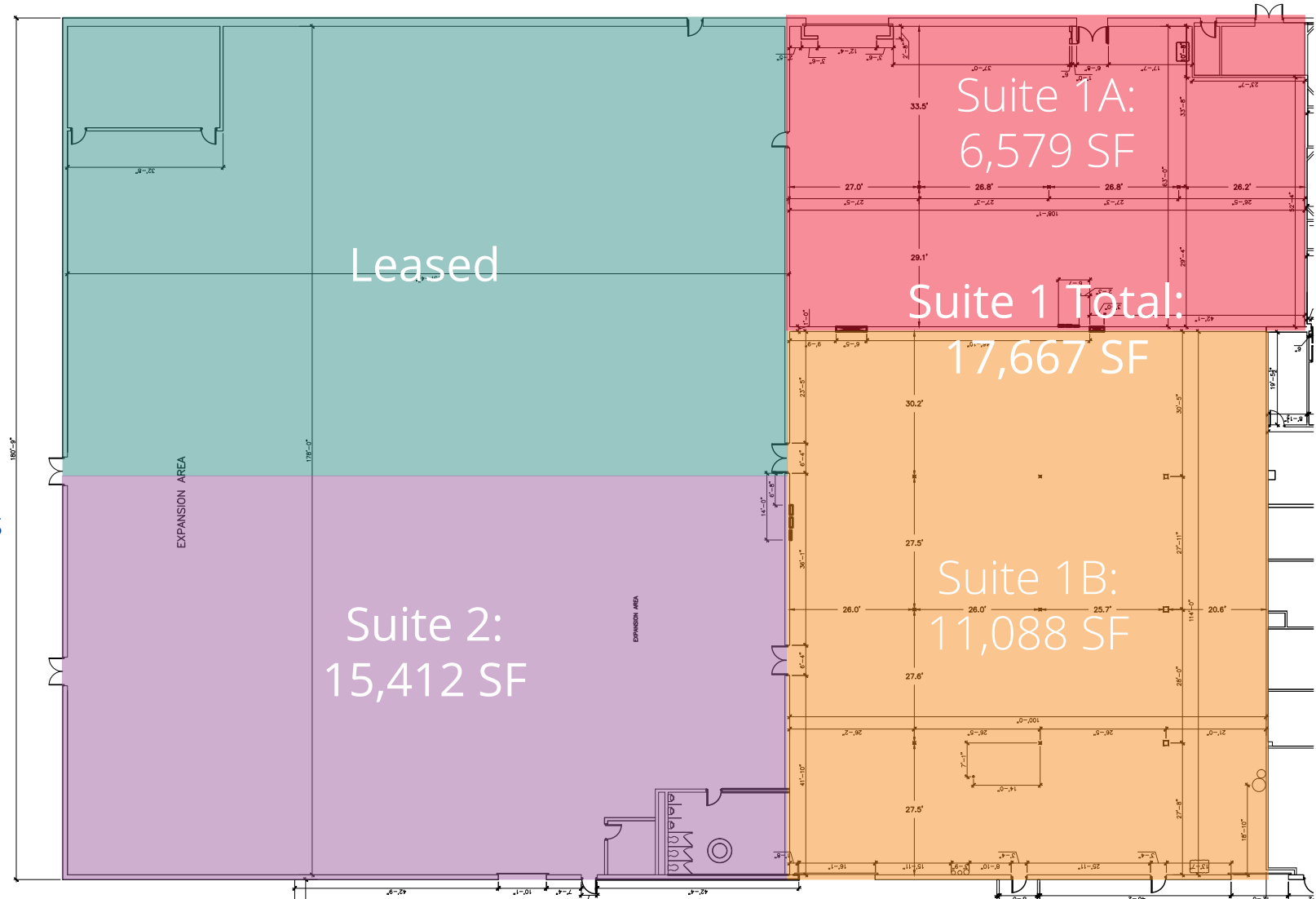
11,088 SF

- Grade Level Door
- Additional Loading Door, Limited Access

Suite 2

15,412 SF

- Truck Well
- 1 Office with Load-Bearing Roof



Up to 30,823 SF for Lease



Colliers

4830 W. Kennedy Blvd., Ste. 300
Tampa, FL 33609
P: +1 813 221 2180

www.colliers.com/tampabay

Juan Vega

Executive Vice President
Healthcare Services
+1 813 871 8516
juan.vega@colliers.com

Christina Burd

Associate
Office Services
+1 813 771 0554
christina.burd@colliers.com

This document/email has been prepared by Colliers for advertising and general information only. Colliers makes no guarantees, representations or warranties of any kind, expressed or implied, regarding the information including, but not limited to, warranties of content, accuracy and reliability. Any interested party should undertake their own inquiries as to the accuracy of the information. Colliers excludes unequivocally all inferred or implied terms, conditions and warranties arising out of this document and excludes all liability for loss and damages arising there from. This publication is the copyrighted property of Colliers and /or its licensor(s). © 2024. All rights reserved. This communication is not intended to cause or induce breach of an existing listing agreement. Colliers International Florida, LLC.