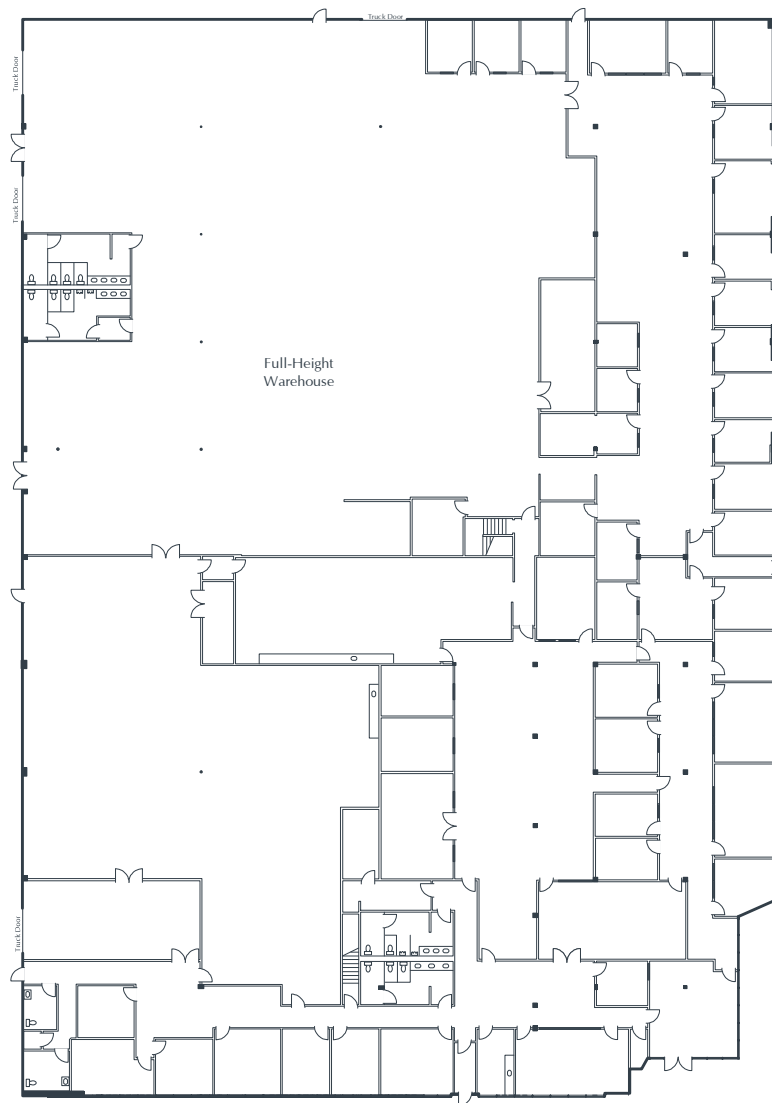


OLEN MAIN STREET PLAZA

2031 S.E. Main Street
Irvine, CA

41,983 Square Feet
\$1.55 SF/MO
Triple Net



NOTES

Reception
27 Window Offices
17 Interior Offices
Conference Room
Restrooms
Kitchens
Large Open Work Areas
4 Ground-Level Truck Doors
Approximately 10,700 sq. ft. of Full-Height Warehouse
Part of a Professionally Managed Business Park

Created by Olen Commercial Realty Corp., 2022.
Information is not to be published or copied without
written approval. Square footage and floor plans are
estimates and should be separately verified. All rates,
terms, floor plans, and building facts are subject to
change without notice.

ea 11.21.2025

MARIA MEYER
Senior Leasing Director
949.719.7215
mmeyer@olen.com



Seven Corporate Plaza
Newport Beach, CA
949.644.6536
www.olen.com