

# 955 GRIER DRIVE

AIRPORT SUBMARKET  
FOR SUBLEASE 17,058 SQFT FLEX SPACE



THOMAS BUGLINO  
THOMAS.BUGLINO@EXPCOMMERCIAL.COM  
LIC#: S.184318 | C: 570-906-4559



THE BUGLINO GROUP  
COMMERCIAL REAL ESTATE

**exp**<sup>®</sup>  
COMMERCIAL

**HUGHES AIRPORT CENTER**  
**955 GRIER DRIVE, LAS VEGAS, NV 89119**



## PROPERTY DETAILS

**Square Footage:** Total: ±17,058 SF

**Office:** ±9,701 SF

**Warehouse:** ±7,357 SF

**Parcel:** 177-03-510-010

**Zoning:** M-1 (Light Manufacturing)

**Power:** 120/208v, 3 phase power

**Clear Height:** ±24'

**Doors:** ±2 Oversize Grade Level Door 14'x16'

**Parking Spaces:** ±51


**Year Built:** 1986 (renovated in 2014)

## PROPERTY HIGHLIGHTS

- High end office improvements
- Fully fire sprinklered
- HVAC office, Swamp cooled warehouse
- Located on the SWC of Grier Drive and Paradise Road
- Easy access to I-15 & I-215 Freeways, Las Vegas Strip, McCarran
- International Airport, Town Square & Sunset Park
- Surrounded by amenities

## OFFERING SUMMARY

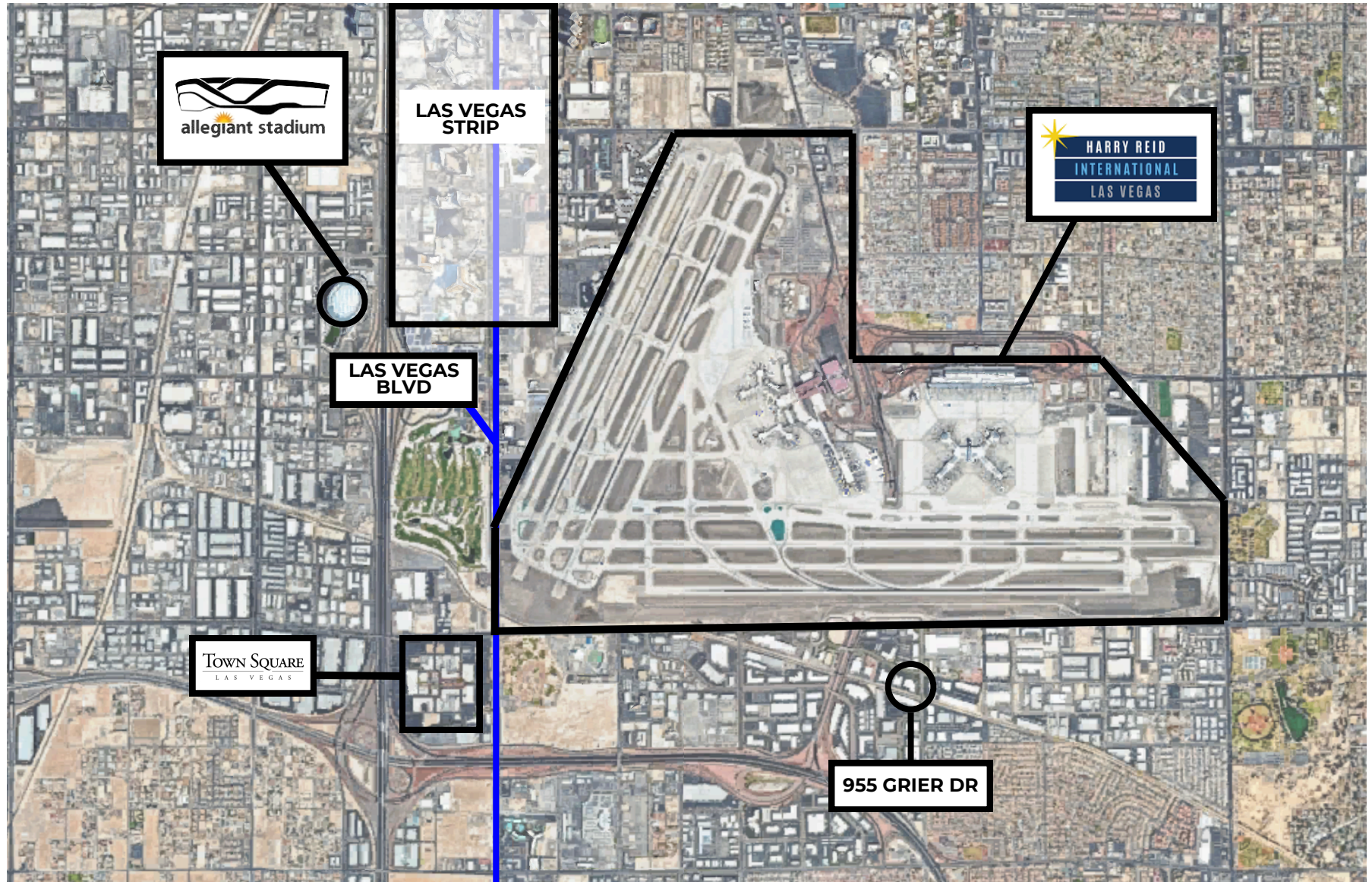
 \$1.25/PSF

 \$0.25/PSF



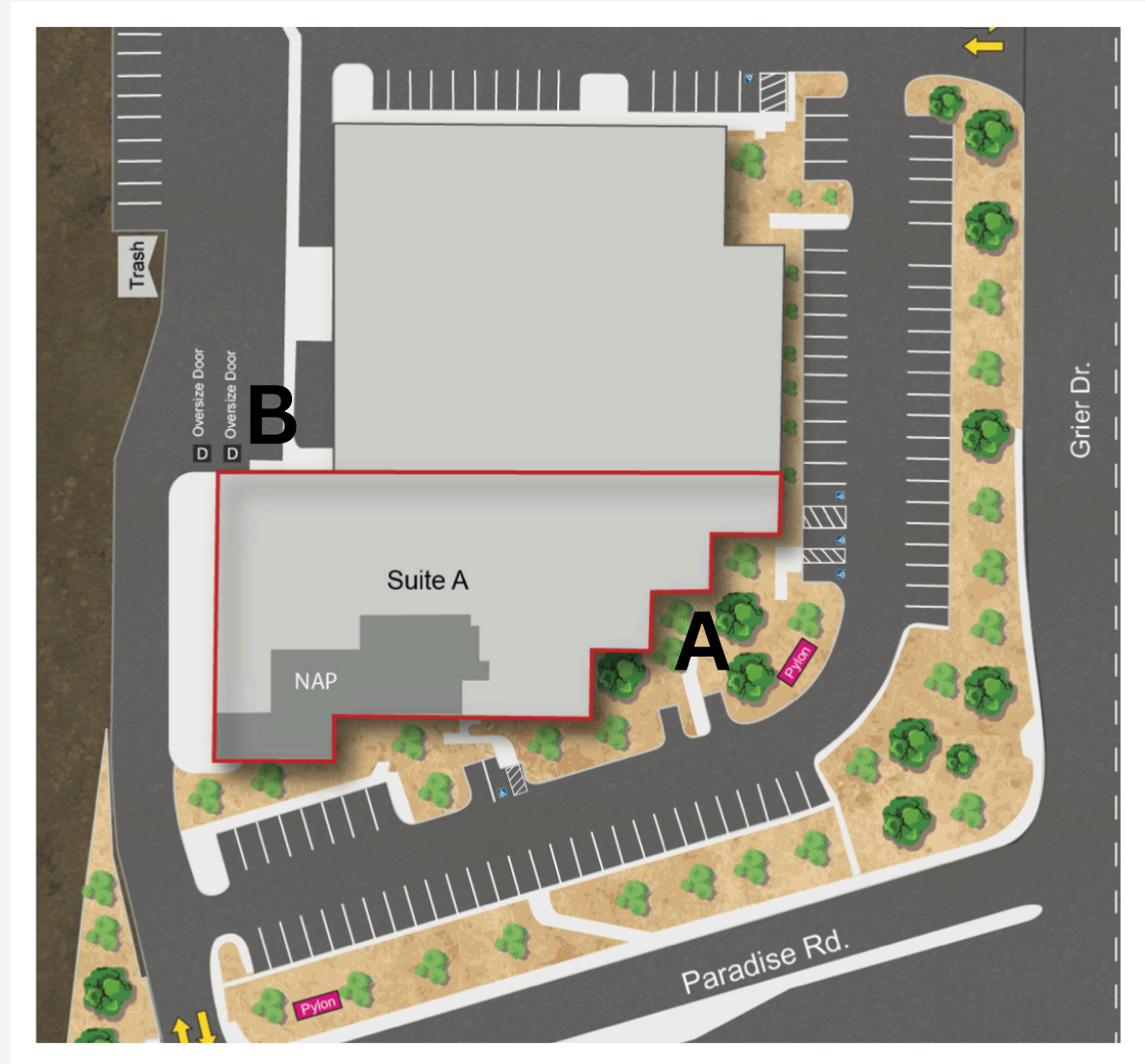
**HUGHES AIRPORT CENTER  
955 GRIER DRIVE, LAS VEGAS, NV 89119**

**AERIAL VIEW**



**HUGHES AIRPORT CENTER  
955 GRIER DRIVE, LAS VEGAS, NV 89119**

**SITE PLAN**



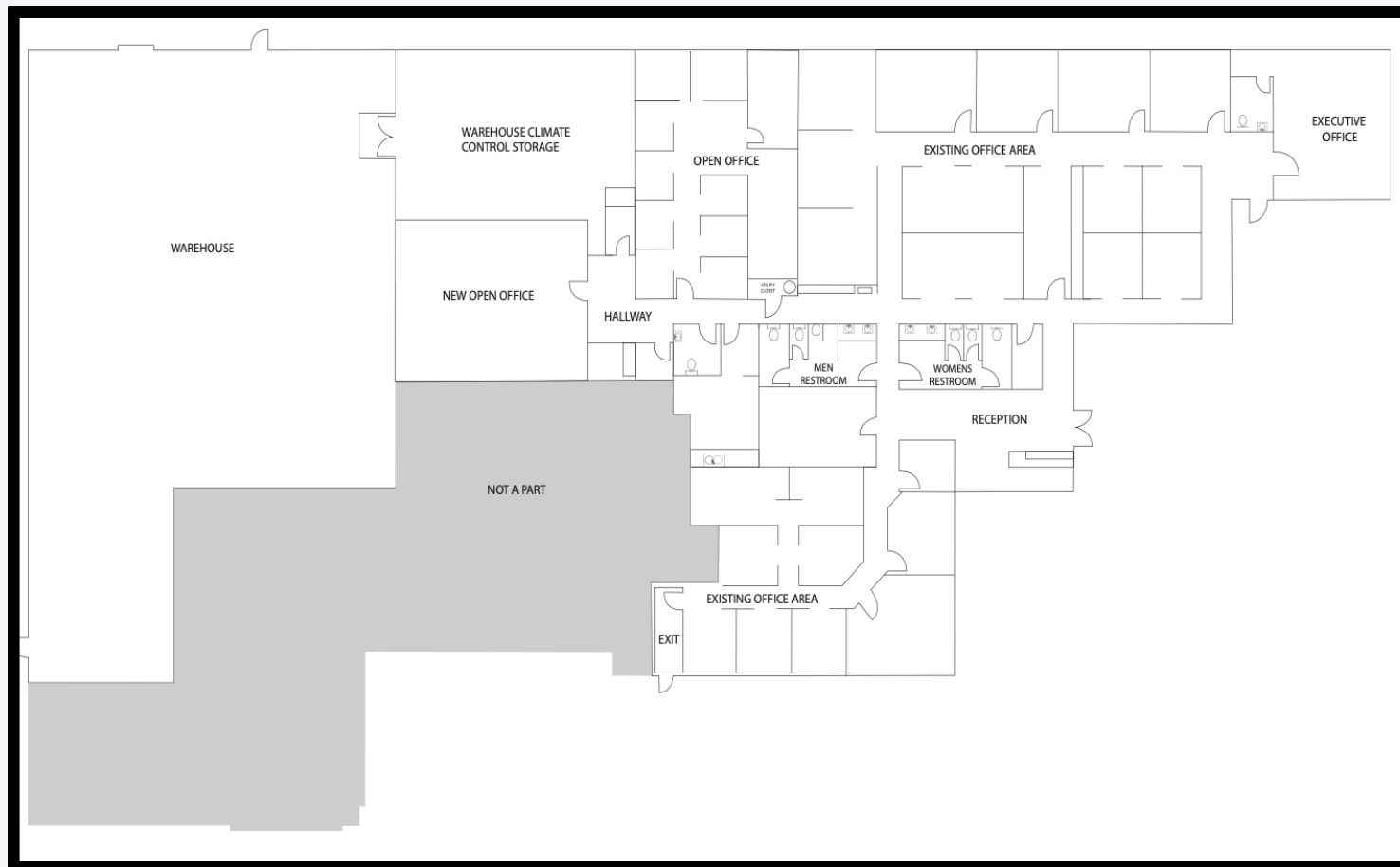
**HUGHES AIRPORT CENTER  
955 GRIER DRIVE, LAS VEGAS, NV 89119**

**INTERIOR**



**HUGHES AIRPORT CENTER  
955 GRIER DRIVE, LAS VEGAS, NV 89119**

**FLOOR PLAN**



**FOR MORE INFORMATION CONTACT: THOMAS BUGLINO  
LIC#: S.184318  
C: 570-906-4559  
THOMAS.BUGLINO@EXPCOMMERCIAL.COM**

**THIS STATEMENT WITH THE INFORMATION IT CONTAINS IS GIVEN WITH THE UNDERSTANDING THAT ALL NEGOTIATIONS RELATING TO THE PURCHASE, RENTING OR LEASING OF THE PROPERTY DESCRIBED ABOVE SHALL BE CONDUCTED THROUGH THIS OFFICE. THE ABOVE INFORMATION WHILE NOT GUARANTEED HAS BEEN SECURED FROM SOURCES WE BELIEVE TO BE RELIABLE.**