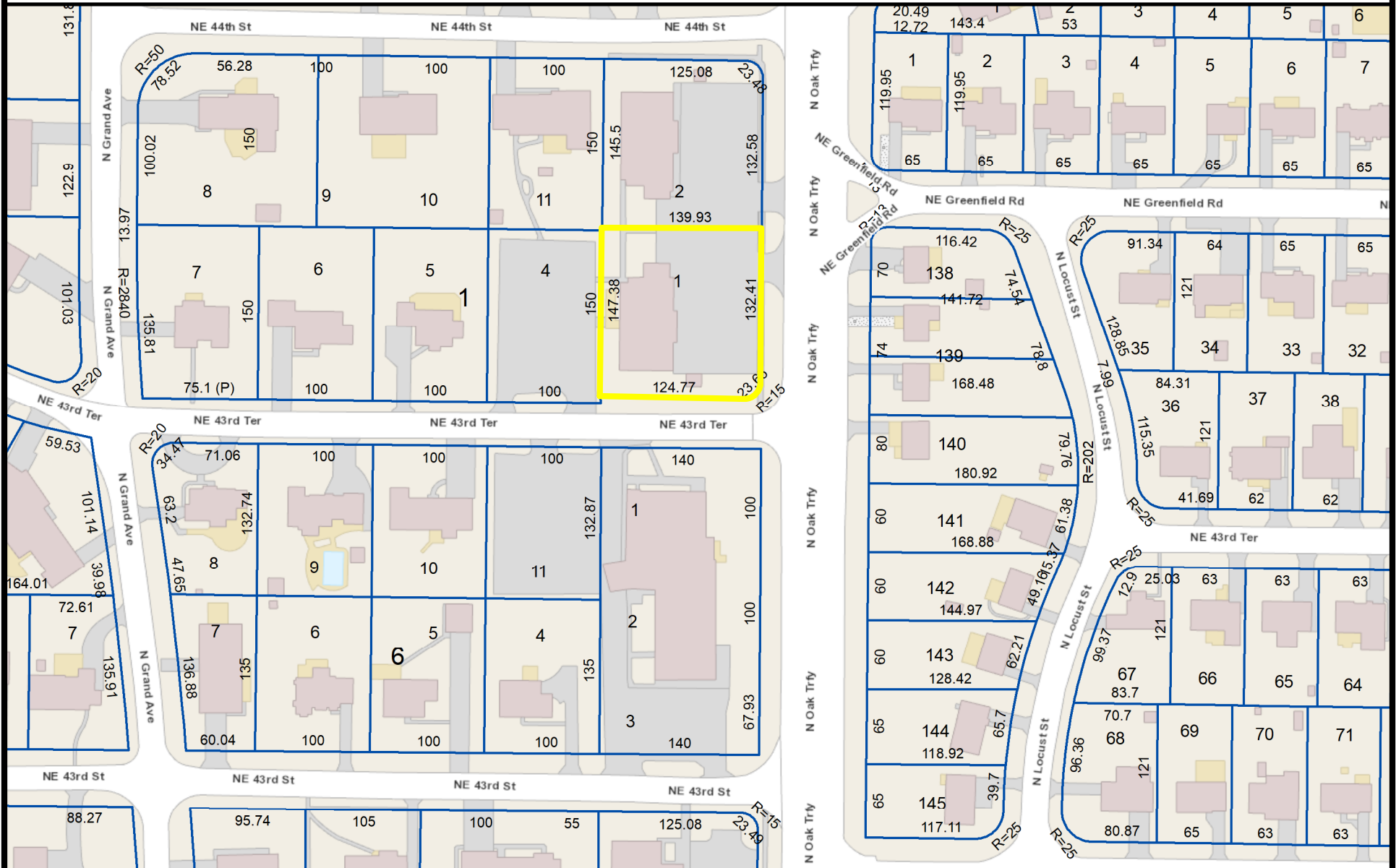
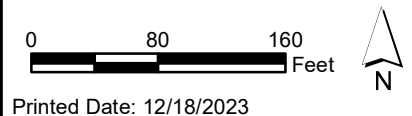


4370 N Oak, KCMO- Parcel Report



While the City of Kansas City, Missouri makes every effort to maintain and distribute accurate information, no warranties and/or representations of any kind are made regarding information, data or services provided. In no event shall the City of Kansas City, MO, be liable in any way to the users of this data. Users of this data shall hold the City of Kansas City, MO harmless in all matters and accounts arising from the use and/or accuracy of this data.



4370 N Oak, KCMO- Parcel Report

PIN: 84023

APN: CL1730900230090001

Plat:

Block:

Lot:

Tract:

Owner: JCB Rental Investments LLC

5559 NW Barry Rd
Ste 362

Ste 362

Kansas City, MO 64154

Address: 4370 N Oak Trfy

ZIP Code: 64116

Council District: 4th

Trash Day: Tuesday

School District: NORTH KANSAS CITY 250

Census Neighborhood: Briarcliff And Claymont

Park Region: North

PW Maintenance District: D1

Impact Fee Zone: EXEMPT

Zoning: B1-1

Land Use: 2300 - Office

Blvd Front Footage:

Assessment Effective Date: 9/4/2015

Assessed Land: 0

Assessed Improvement: 0

Exempt Land: 0

Exempt Improvement: 0

Square Feet: 20,523.505

Acres: 0.471

Perimeter: 567.811

PLSS: n335002

Legal: LOT 1 COLONY WOODS BUSINESS & PROFESSIONAL CENTER

While the City of Kansas City, Missouri makes every effort to maintain and distribute accurate information, no warranties and/or representations of any kind are made regarding information, data or services provided. In no event shall the City of Kansas City, MO, be liable in any way to the users of this data. Users of this data shall hold the City of Kansas City, MO harmless in all matters and accounts arising from the use and/or accuracy of