

**25,600±**  
**SQUARE FOOT**  
**INDUSTRIAL**  
**AVAILABLE**

**SUBLEASE THROUGH**  
**DECEMBER 31, 2026**  
**POTENTIAL FOR LONGER TERM**

**IDEAL LOCATION**  
**MINUTES FROM I-295**  
**& COMMODORE**  
**BARRY BRIDGE**



**AVAILABLE FOR SUBLEASE**

**730 VETERANS DR.**

**SWEDESBORO, NJ**

**Scott Mertz, SIOR**  
+1 609 413 5647  
scott.mertz@naimertz.com

**NAI Mertz**  
21 Roland Avenue | Mount Laurel, NJ 08054  
+1 856 234 9600 | naimertz.com

**NAIMertz**  
COMMERCIAL REAL ESTATE SERVICES. WORLDWIDE

AVAILABLE FOR SUBLEASE

# 730 VETERANS DRIVE

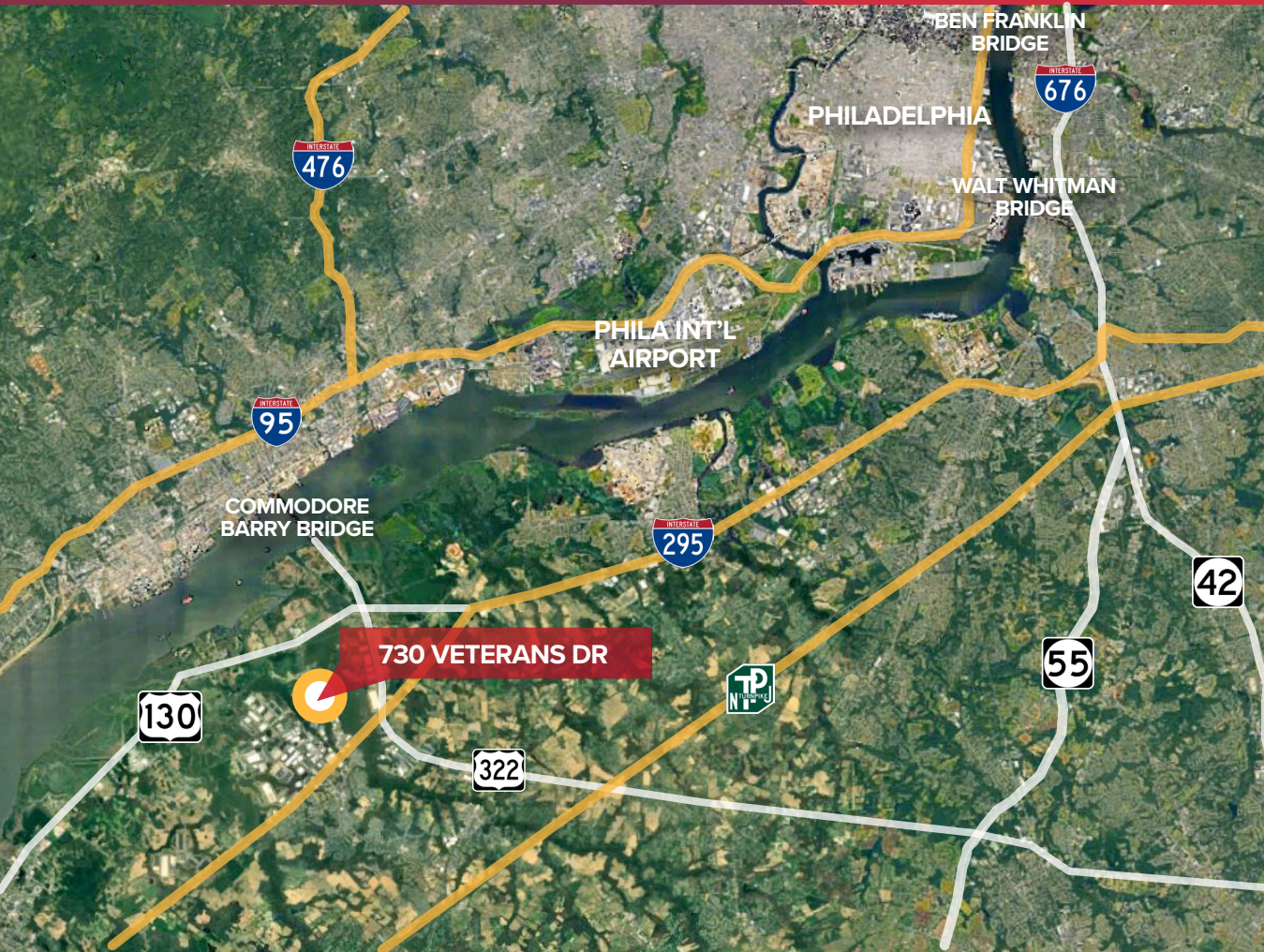
SWEDESBORO, NJ

## PROPERTY DESCRIPTION

- 25,600± SF unit available
  - 23,700± SF warehouse
  - 1,900± SF office
- 7.39± acres
- 25'± clear ceiling height
- (3) 10' x 10' tailgate loading docks w/ levelers
- (1) oversize drive-in door
- Restrooms
  - Ladies: 2 toilets, 1 sink
  - Mens: 1 toilet, 1 sink, 1 urinal
- LED lighting
- Potential racking available
- Sublease runs through December 31, 2026. Potential for longer term
- Fully sprinklered
- Public water & sewer
- Ample car parking
- Trailer parking available



# LOCATION INFORMATION



**AVAILABLE FOR SUBLEASE**

## 730 VETERANS DR

SWEDSBORO, NJ

### Distance to

Route 130	1.3 mi
I-295 (Exit 10)	1.7 mi
Route 322	2.6 mi
Commodore Barry Bridge	3.4 mi
NJ Turnpike (Exit 2)	6.5 mi
I-95	6.7 mi
Philadelphia Int'l Airport	13.8 mi
Philaport (Packer Ave)	22 mi
Center City Philadelphia	24 mi



**Scott Mertz, SIOR**

+1 609 413 5647

scott.mertz@naimertz.com

**NAI Mertz**

21 Roland Avenue | Mount Laurel, NJ 08054

+1 856 234 9600 | naimertz.com

**NAI Mertz**

COMMERCIAL REAL ESTATE SERVICES. WORLDWIDE