

FOR SUBLEASE

Turtle Creek Village

3838 Oak Lawn Ave, Dallas Texas

An aerial photograph of the Turtle Creek Village building, a tall skyscraper with a distinctive grid-like facade. The building is situated in an urban area with other buildings, streets, and greenery visible in the background. A teal arrow graphic points towards the building.

Suite 1250

2,558 SF

Property Highlights

TURTLE CREEK VILLAGE
3838 Oak Lawn Dallas, TX
Suite 1250

Class A Vacancy
2,558 RSF

- Rate: \$26.00/NNN
- Term Through March 31, 2022
- Furniture Negotiable
- 3 Offices with Conference Room

Contact

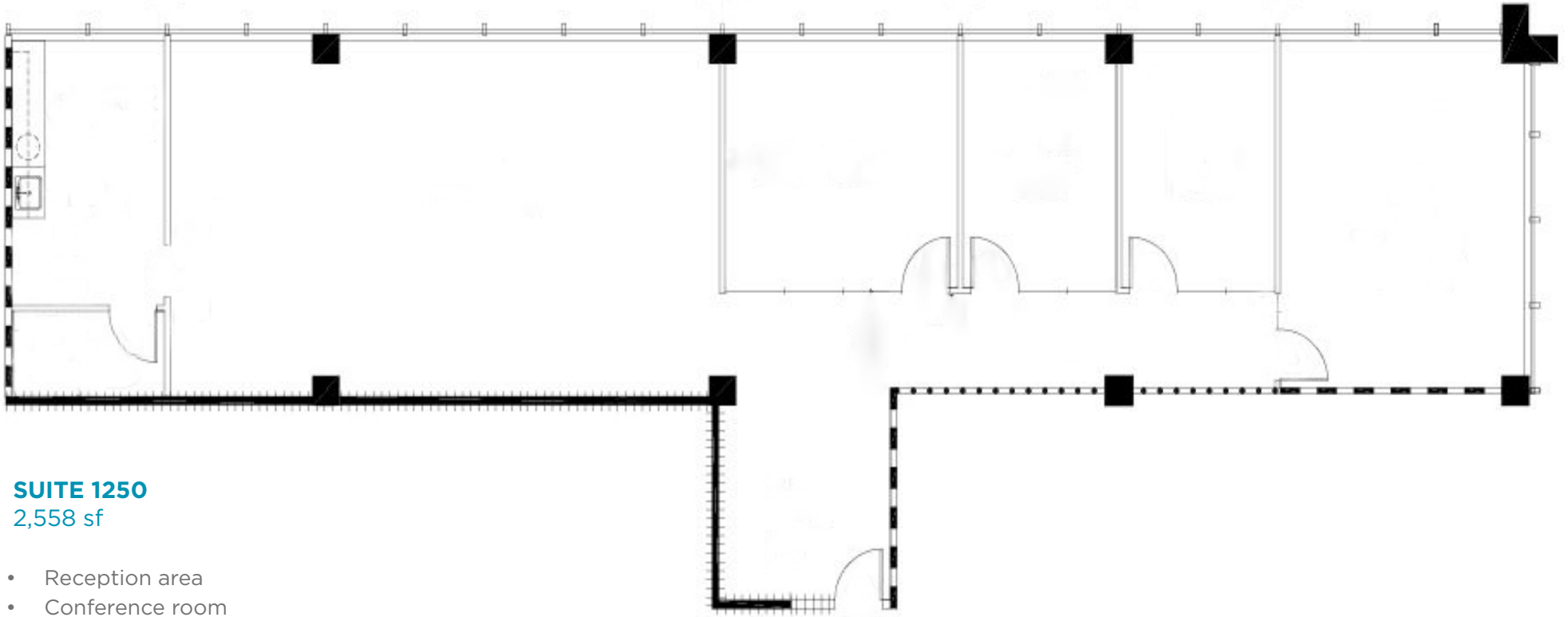
STEVE WENTZ
Director
+1 972 663 9654
steve.wentz@cushwake.com

Building Features

- Recently updated building reception, lobbies, corridors, elevator cabs, elevator lobbies, restrooms
- Dry cleaners, concierge service and located on DART bus line

Area Amenities

- Located in Turtle Creek and just minutes to downtown and just west of Central Expressway
- Walking distance to retail shops and a wide variety of restaurants



SUITE 1250

2,558 sf

- Reception area
- Conference room
- 3 offices
- Breakroom
- 4 cubes

Contact

STEVE WENTZ
Director
+1 972 663 9654
steve.wentz@cushwake.com

FOR SUBLEASE
3838 Oak Lawn | Dallas, Texas



Contact

STEVE WENTZ
Director
+1 972 663 9654
steve.wentz@cushwake.com