

# PLEASANT GROVE OFFICE

FOR SALE



## PROPERTY DETAILS

461 East 1000 South, Pleasant Grove, UT 84062

- 6,060 SF office building
- Four (4) suites with functional layouts
- Elevator in building
- Basement storage
- Abundant parking
- Great northern Utah County location
- Asking price: \$1,300,000

## 2025 DEMOS



### EST. POPULATION

1 MILE » **10,405**  
3 MILE » **75,650**  
5 MILE » **183,018**



### EST. HOUSEHOLDS

1 MILE » **3,155**  
3 MILE » **23,685**  
5 MILE » **56,023**



### EST. AVERAGE HH INCOME

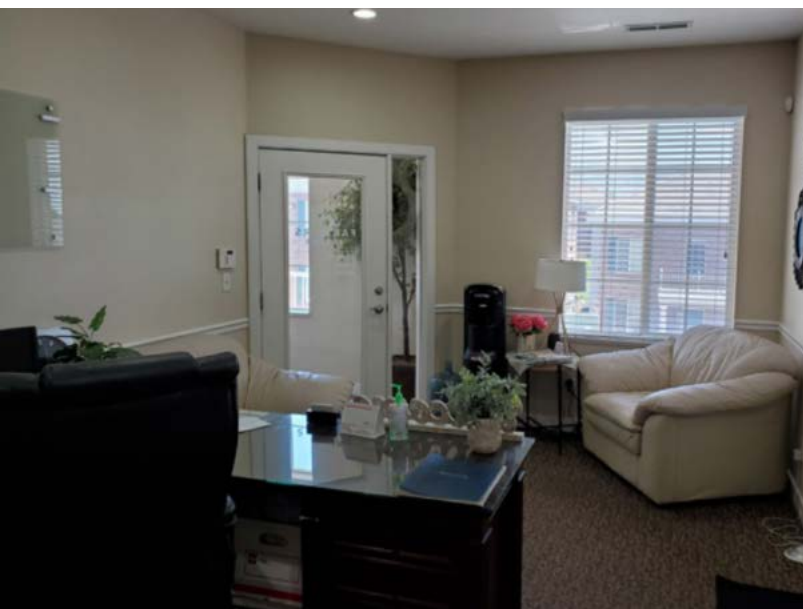
1 MILE » **\$115,596**  
3 MILE » **\$127,086**  
5 MILE » **\$132,030**



**NIC WOODS**  
nwoods@newmarkmw.com  
direct 801.719.4309  
[View Profile](#)

**FULL SERVICE  
COMMERCIAL REAL ESTATE**  
312 East South Temple  
Salt Lake City, Utah 84111  
Office 801.456.8800  
[www.newmarkmw.com](http://www.newmarkmw.com)





**NEWMARK**  
MOUNTAIN WEST

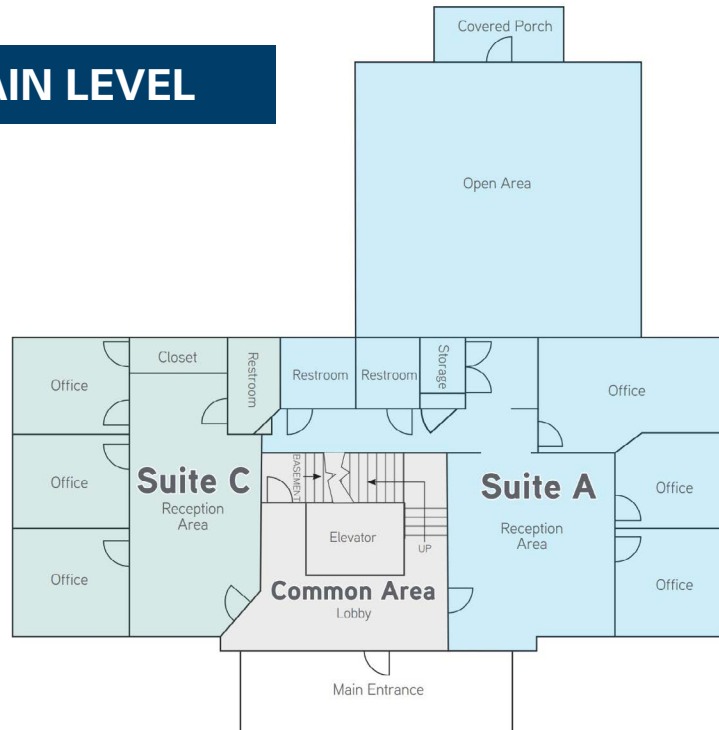
**NIC WOODS**  
nwoods@newmarkmw.com  
direct 801.719.4309  
[View Profile](#)

**FULL SERVICE  
COMMERCIAL REAL ESTATE**  
312 East South Temple  
Salt Lake City, Utah 84111  
Office 801.456.8800  
[www.newmarkmw.com](http://www.newmarkmw.com)

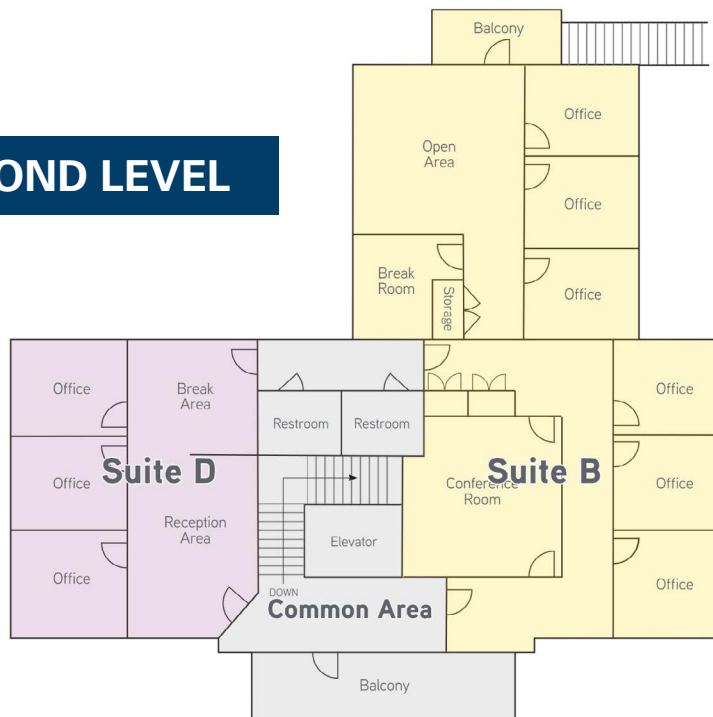
# PLEASANT GROVE OFFICE

## FLOOR PLANS

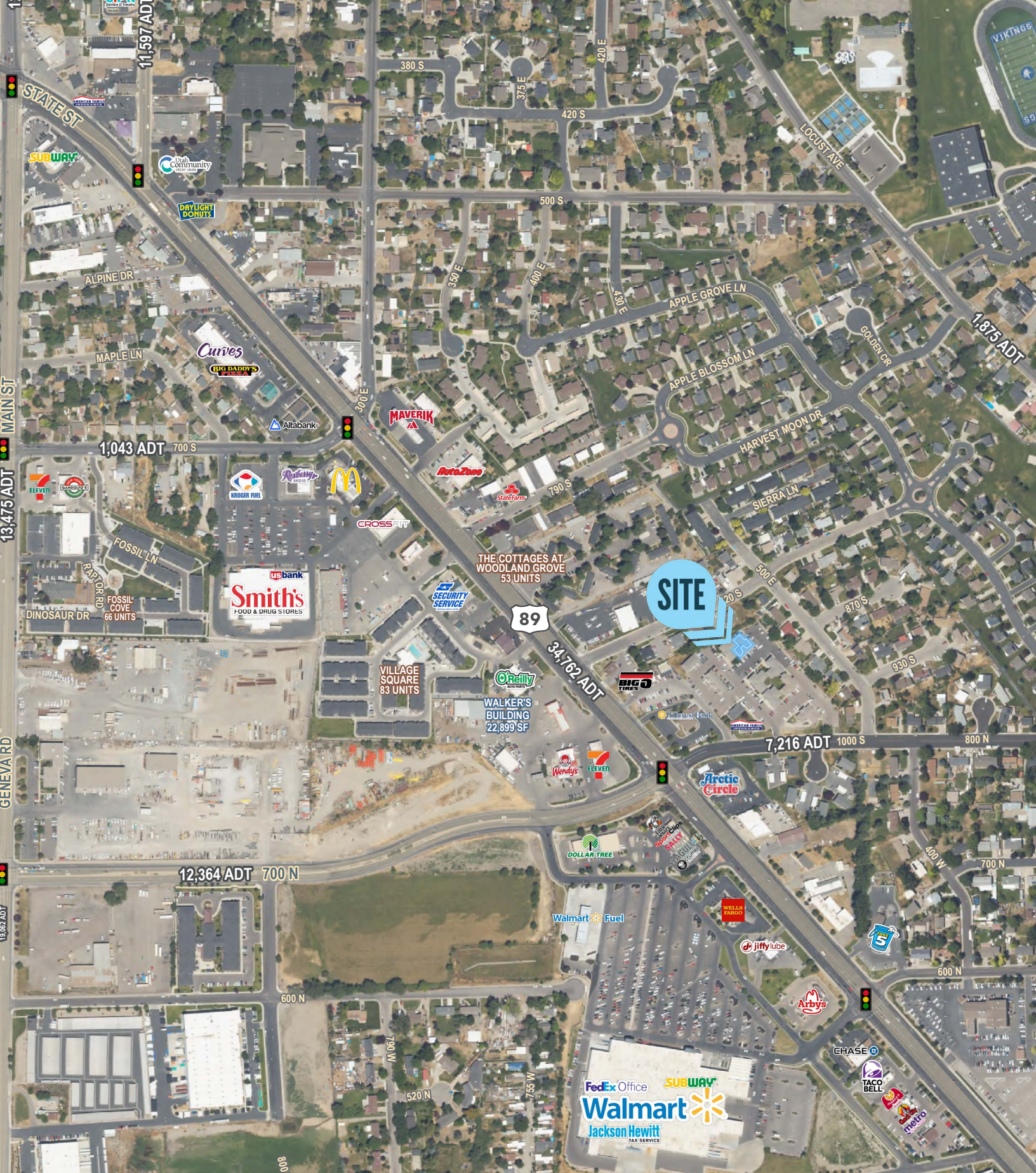
### MAIN LEVEL



### SECOND LEVEL







**NIC WOODS**  
 nwoods@newmarkmw.com  
 direct 801.719.4309  
[View Profile](#)

**FULL SERVICE  
 COMMERCIAL REAL ESTATE**  
 312 East South Temple  
 Salt Lake City, Utah 84111  
 Office 801.456.8800  
[www.newmarkmw.com](http://www.newmarkmw.com)