



15894 HIGHWAY 17
P.O. BOX 56
HAMPSTEAD, NC 28443
910/270-5100 FAX: 910/270-5110

FOR LEASE PROFESSIONAL OFFICE IN HAMPSTEAD



**16356 HIGHWAY 17
HAMPSTEAD, NORTH CAROLINA**

This former dentist office has a versatile floor plan and ample parking. Available for occupancy May 1, 2026, it provides excellent visibility and over 1,800 square feet of quality space.

**CALL
BRIAN NADEAU
(910) 622-6258**

**CALL
HENRY NADEAU
(910) 524-7184**

Commercial & Investment Real Estate Specialists

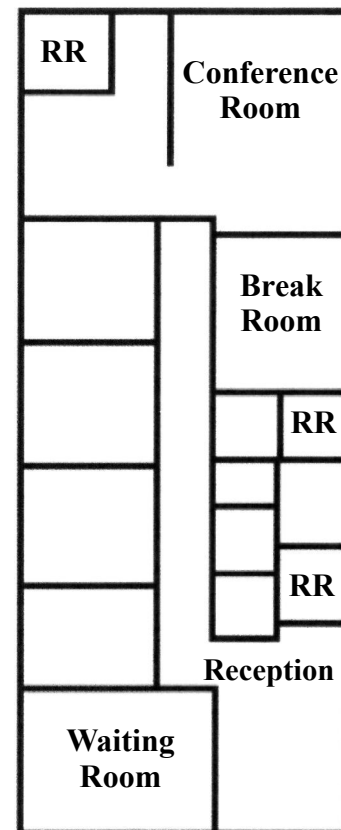
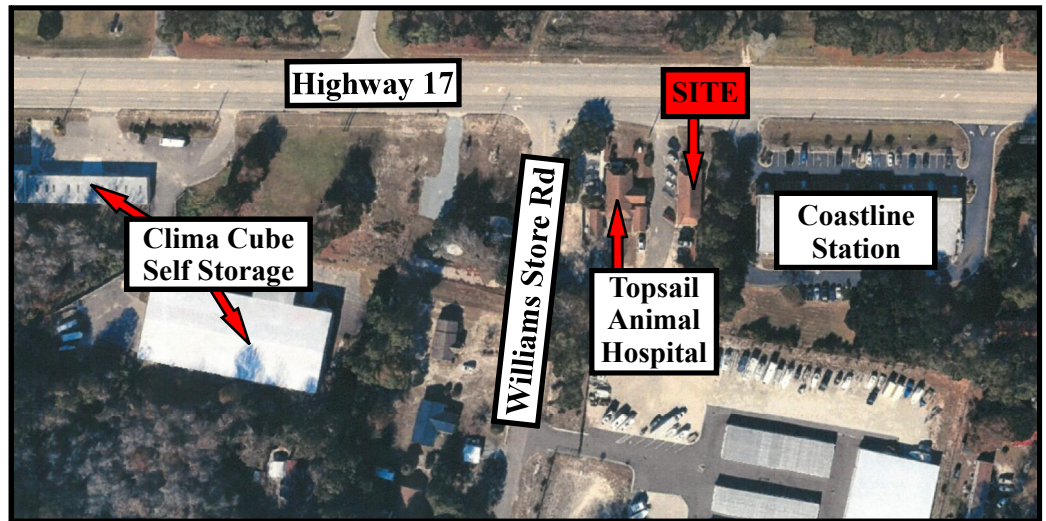
email: info@creativecommercial.biz
www.creativecommercial.biz



16356 HIGHWAY 17

THE BUILDING

- +/- 1,824 Square Feet
- Fully Heated And Cooled
- 5 Offices/Exam Rooms
- 3 Restrooms
- Breakroom
- Conference Room
- Pender County Water
- Septic System
- Tax Parcel ID: 3293-53-1435-0000
- Traffic Count Over 50,000 Cars Per Day
- General Business (GB) Permits Most Office, Retail And Service Uses
- In East Pender, Over 10,000 New Residential Units Are Planned And Permitted. County Population Is Projected To Double In The Next 25 Years.



THE OFFERING

\$5,800/Mo

- Rent Includes Property Taxes And Building Insurance
- Tenant Responsible For Utilities

CREATIVE COMMERCIAL PROPERTIES, INC.

CALL

HENRY NADEAU
(910) 524-7184

Or

BRIAN NADEAU
(910) 622-6258

Email:henry@creativecommercial.biz

Email:brian@creativecommercial.biz

www.creativecommercial.biz



Creative Commercial Properties, Inc. reasonably believes the information in this brochure is fairly and accurately stated. However, any prospective purchaser is urged to independently confirm its accuracy and completeness.