



FOR SALE

3140 Route 22

DOVER PLAINS, NY 12522

Modern Designed
Commercial Gem



HOULIHAN LAWRENCE
COMMERCIAL



HOULIHAN LAWRENCE
COMMERCIAL

3140 Route 22

DOVER PLAINS, NY 12522

6,032
SQFT

\$975,000
OFFERED AT

Presenting an impeccably revitalized versatile commercial gem located on Route 22 in the heart of Dover Plains. This 6,032 sq ft property has undergone an extensive transformation, leaving no detail untouched. Showcasing modern design elements that seamlessly blend with timeless charm. With its open concept, the potential for customization is limitless. Whether you envision a dynamic art studio, a showcase for your car collection, a captivating event space, a food market, or a personalized haven, this property provides the foundation for your dream. Don't miss the chance to make this remarkable property your own.



PROPERTY FEATURES

- › COMMERCIAL/INDUSTRIAL/OFFICE ZONED
- › OVER 6,000 SF OF INTERIOR FLOOR SPACE
- › 0.31 ACRES OF LAND
- › BUILT IN 1970
- › RECENTLY REMODELED
- › 1 STORY
- › GREAT LIGHTING
- › HIGH CEILINGS WITH EXPOSED BEAMS
- › 2 BATHROOMS
- › CITY WATER
- › CENTRAL AIR
- › ON-SITE PARKING
- › ZONING: HR
- › NEAR METRO NORTH TRAIN STATION
- › ON HEAVILY TRAVELED ROUTE 22

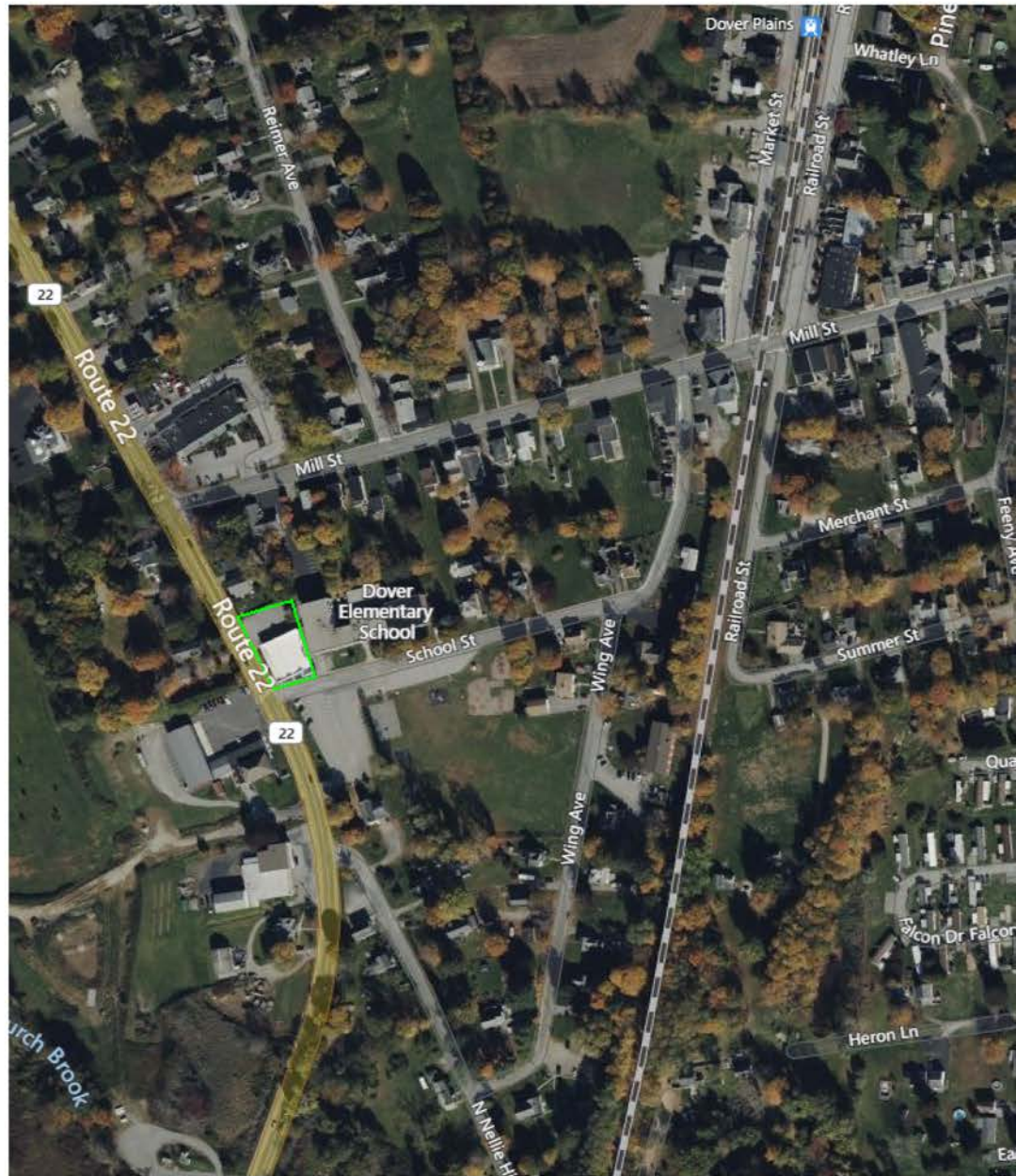
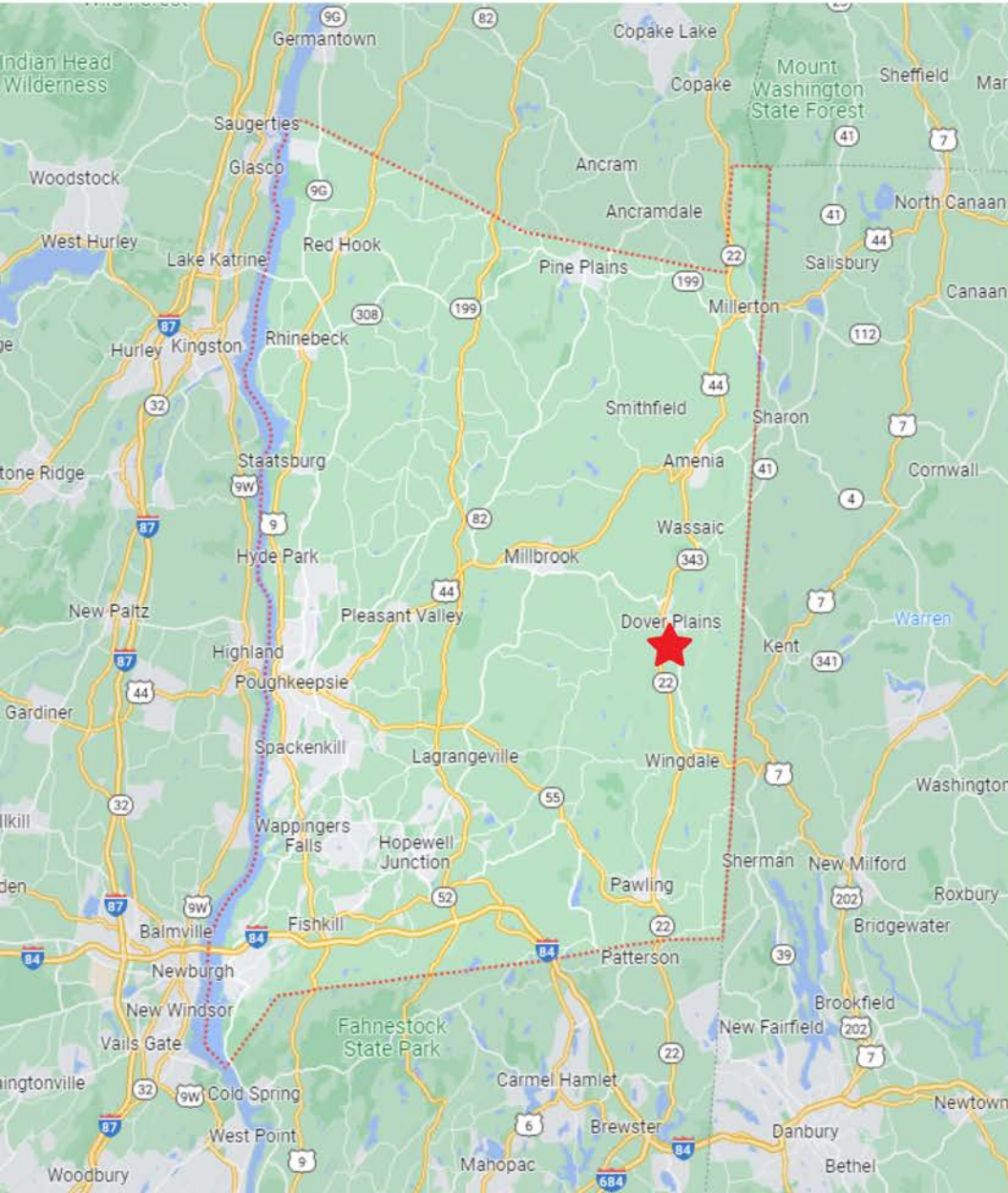
ASKING: \$975,000







AREA OVERVIEW



CONTACT ME FOR MORE INFORMATION



BILL FLOOD

Associate Real Estate Broker

M (413) 896-2714 O (914) 798-4900

wflood@houlihanlawrence.com



HOULIHAN LAWRENCE
COMMERCIAL

**LOCAL MARKET LEADERSHIP.
WORLD CLASS CONNECTIONS.**

The information contained in this Offering Memorandum is confidential, furnished solely for the purpose of review by a prospective purchaser of certain information relating to the property mentioned herein (the "Property"), and is not to be used for any other purpose or made available to any other person without the prior written consent of HLC. The material is subject to errors and omissions and based on part upon information supplied by sources deemed reliable.

