



# BusinessWise @ 4 Smithfield St

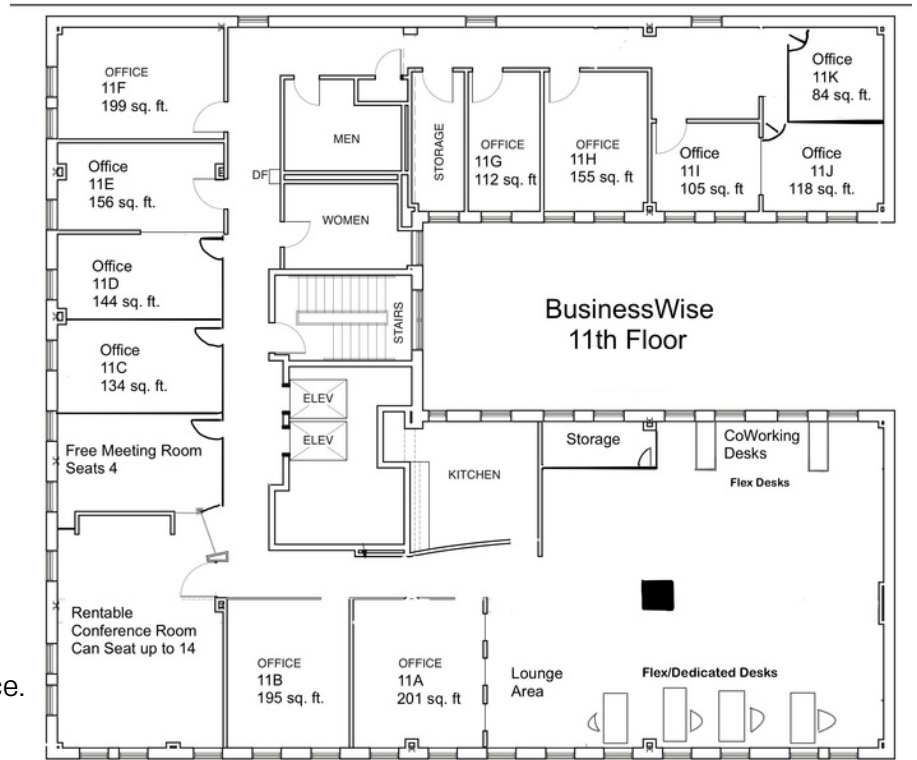
A Flexible Office Solution

## 4 Smithfield St. 11th Floor

BusinessWise (4 Smithfield St.)

### Included Amenities Per Person:

- Wi-Fi
- Desk + Pedestal File Cabinet + Chair
- Coffee/Tea/Filtered Water
- Use of Members Only Meeting Room
- Use of Kitchen & Lounge
- 24/7 Building Access Card
- Mailing Address + Mailbox  
*(Min 12-month term length required)*
- 15% Discount off the current rental rates for the Corner Conference Room
- Tuscan Cafe Located in the Building Lobby
- Several parking options within 2-blocks  
*(additional fee required)*
- Two T-Station stops within walking distance.
- Impressive Views of the Mon-River and Station Square.



### Flex Desk:

#### Proposed Rates:

Day-Pass: \$25/day

Contact BusinessWise for: Month-to-Month, 3-Month, 6-Month, & 12-Month Rates

### Dedicated Desk:

#### Proposed Rates:

Contact BusinessWise for: Month-to-Month, 3-Month, 6-Month, & 12-Month Rates

### Office (11A & 11B) 1-Person

#### Proposed Rates:

Day-Pass \$95 /day

Contact BusinessWise for: Month-to-Month, 3-Month, 6-Month, & 12-Month Rates

### Office (11A & 11B) Team Office

#### Proposed Rates:

Day-Pass \$95 /day

Contact BusinessWise for: Month-to-Month, 3-Month, 6-Month, & 12-Month Rates

### Office (11C & D) 1-Person

#### Proposed Rates:

Day-Pass \$60/day

Contact BusinessWise for: Month-to-Month, 3-Month, 6-Month, & 12-Month Rates

### Office (11E & H) 1-Person

#### Proposed Rates:

Day-Pass \$95/day

Contact BusinessWise for: Month-to-Month, 3-Month, 6-Month, & 12-Month Rates

### Office (11E & H) 1-Person

#### Proposed Rates:

Day-Pass \$95 /day

Contact BusinessWise for: Month-to-Month, 3-Month, 6-Month, & 12-Month Rates

### Office (11G & I & J & K) 1-Person

#### Proposed Rates:

Day-Pass \$60/day

Contact BusinessWise for: Month-to-Month, 3-Month, 6-Month, & 12-Month Rates

Contact BusinessWise for Current Office Availability and Rates



# BusinessWise @ 4 Smithfield St

A Flexible Office Solution

## 4 Smithfield St. 11th Floor

Office 11A



Office 11B



Office 11A & 11B View



Discounted Rates on Corner  
Conference Room

Office 11C



Office 11G



Office 11I



Members Meeting Room



Lounge & Kitchen & Flex Area



Dedicated Desk Area (Desks by windows)



Flex Area High Tables & Lounge



## Contact Us

For more information or to schedule a tour please call or email us.  
BusinessWise Property Manager: Deb Shanahan  
Phone: 412-573-9473  
Cell: 412-706-2494  
Email: [info@bwisesharedoffices.com](mailto:info@bwisesharedoffices.com)  
Website: [www.bwisesharedoffices.com](http://www.bwisesharedoffices.com)