

39340 COUNTRY CLUB DRIVE
SUITE #300
FARMINGTON HILLS, MICHIGAN

HI-TECH FOR LEASE
3,039 Square Feet Available



**SIGNATURE
ASSOCIATES**
KNOW SIGNATURE | KNOW RESULTS

COUNTRY CLUB CORPORATE PARK



PROPERTY FEATURES

- 3,039 square feet available
- Turn-key flex space with great natural lighting and updated building services
- Well-maintained property
- Ideal location at the southeast corner of Haggerty Road and 12 Mile Road
- Immediate access to M-5 and I-696 freeways via 12 Mile Road
- Shop space possible
- Available immediately
- Lease Rate: \$13.95/sq. ft. NNN



For more information, please contact:

CHRISTOPHER M. D'ANGELO
(248) 948 0109
cdangelo@signatureassociates.com

JASON STOUGH
(248) 948 4180
jstough@signatureassociates.com

SIGNATURE ASSOCIATES
One Towne Square, Suite 1200
Southfield, MI 48076
www.signatureassociates.com

3,039
Square Feet
AVAILABLE

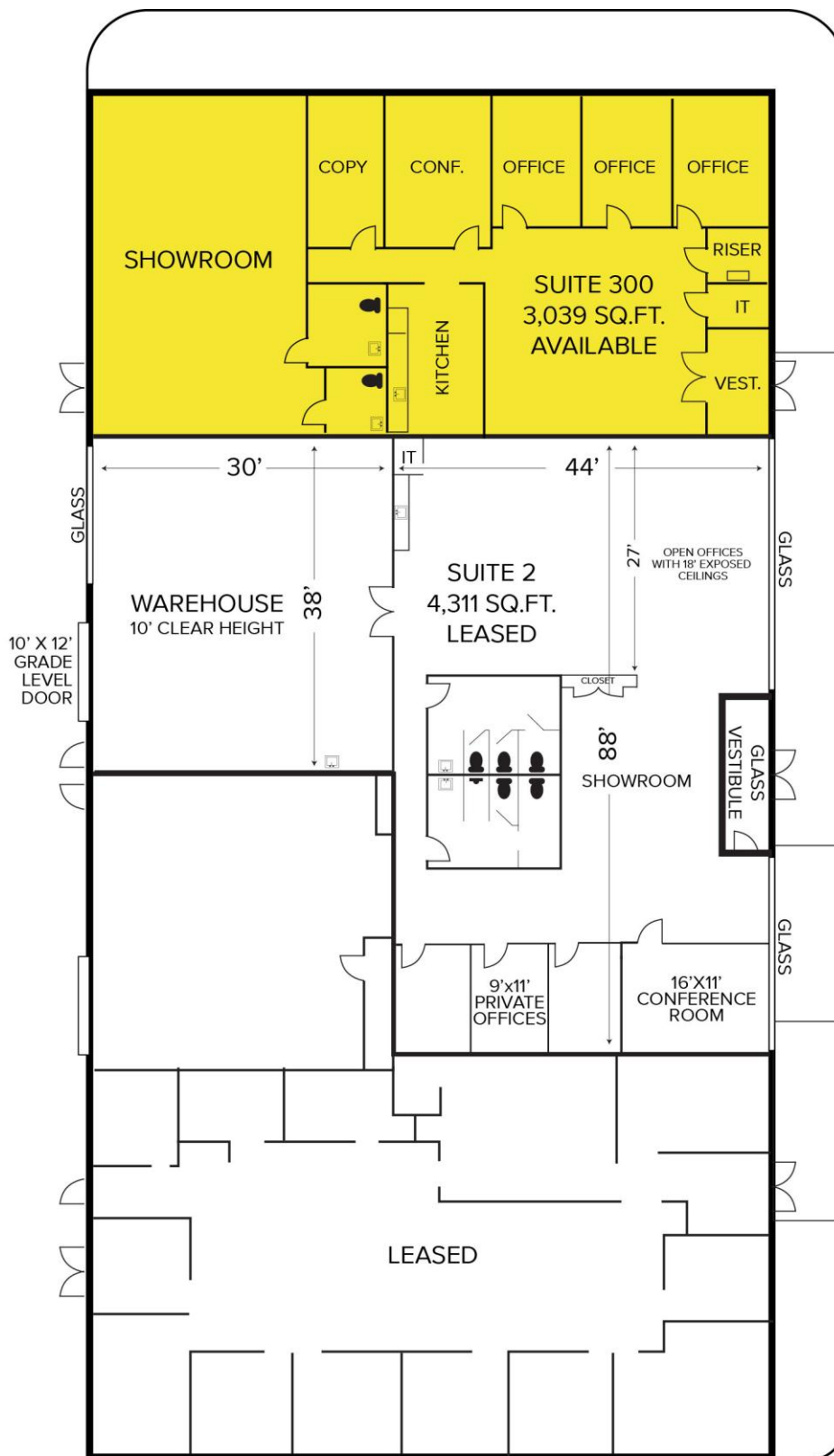
Information is subject to verification and no liability for errors or omissions is assumed. Price is subject to change and listing withdrawal.

39340 Country Club Drive – Farmington Hills, Michigan

Hi-Tech For Lease

3,039
Square Feet
AVAILABLE

Floor Plan



*Measurements are approximate

For more information, please contact:

CHRISTOPHER M. D'ANGELO
(248) 948 0109
cdangelo@signatureassociates.com

JASON STOUGH
(248) 948 4180
jstough@signatureassociates.com

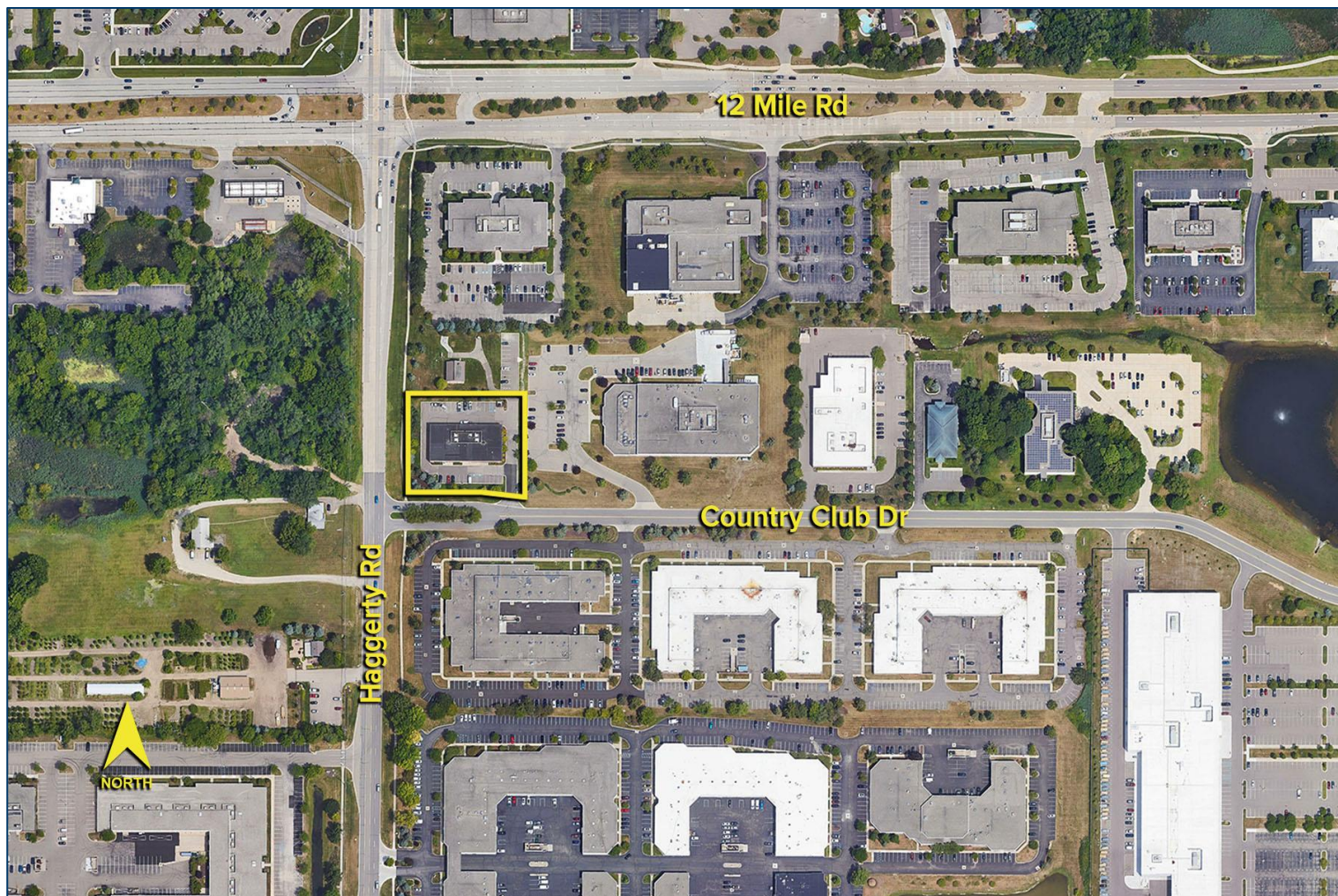
SIGNATURE ASSOCIATES
One Towne Square, Suite 1200
Southfield, MI 48076
www.signatureassociates.com

39340 Country Club Drive – Farmington Hills, Michigan

Hi-Tech For Lease

3,039
Square Feet
AVAILABLE

Aerial



For more information, please contact:

CHRISTOPHER M. D'ANGELO
(248) 948 0109
cdangelo@signatureassociates.com

JASON STOUGH
(248) 948 4180
jstough@signatureassociates.com

SIGNATURE ASSOCIATES
One Towne Square, Suite 1200
Southfield, MI 48076
www.signatureassociates.com