

# Burger

& COMPANY

## FOR SALE

Northline and Beech Daly Roads  
Taylor, Michigan  
Up to 13 Acres



- Minutes From Detroit Metropolitan Airport
- Frontage on both Beech Daly and Northline Road
- Easy and Quick Access to I-94 and I-75
- All Utilities on Site or Available
- Priced to Sell!

**Paul Burger, SIOR**

President

Cell: 586.202.7800

paul@burgercollc.com

**Burger & Company**

248.536.2888

www.burgercollc.com

38345 W. 10 Mile Road, Suite 100  
Farmington Hills, MI 48335

Information contained herein is deemed to be reliable but is not guaranteed and may be withdrawn at any time.

# FOR SALE

Northline and Beech Daly Roads  
Taylor, MI



## LAND SPECIFICATIONS

<b>Location</b>	Beech Daly & Northline	<b>Lot Size</b>	13 Acres
<b>County</b>	Wayne	<b>Zoning</b>	Light Industrial (I-1)

<b>Electrical</b>	On Site	<b>Sewer</b>	On Site
<b>Gas</b>	On Site	<b>Neighbors</b>	Industrial
<b>Water</b>	On Site	<b>Easements</b>	County Drain
<b>Topgraphy</b>	Level	<b>Restrictions</b>	None Known
<b>Frontage</b>		<b>Taxes</b>	TBD

### Description

- Available acreage is approximate due to a split from the larger parent parcel
- Access to Class A road through parcel with direct frontage on Northline

**Sale Price** \$325,000.00  
**Price Per Acre** \$25,000.00

**Burger**

& COMPANY

**Paul Burger, SIOR**

President

Cell: 586.202.7800

paul@burgercollc.com

248.536.2888

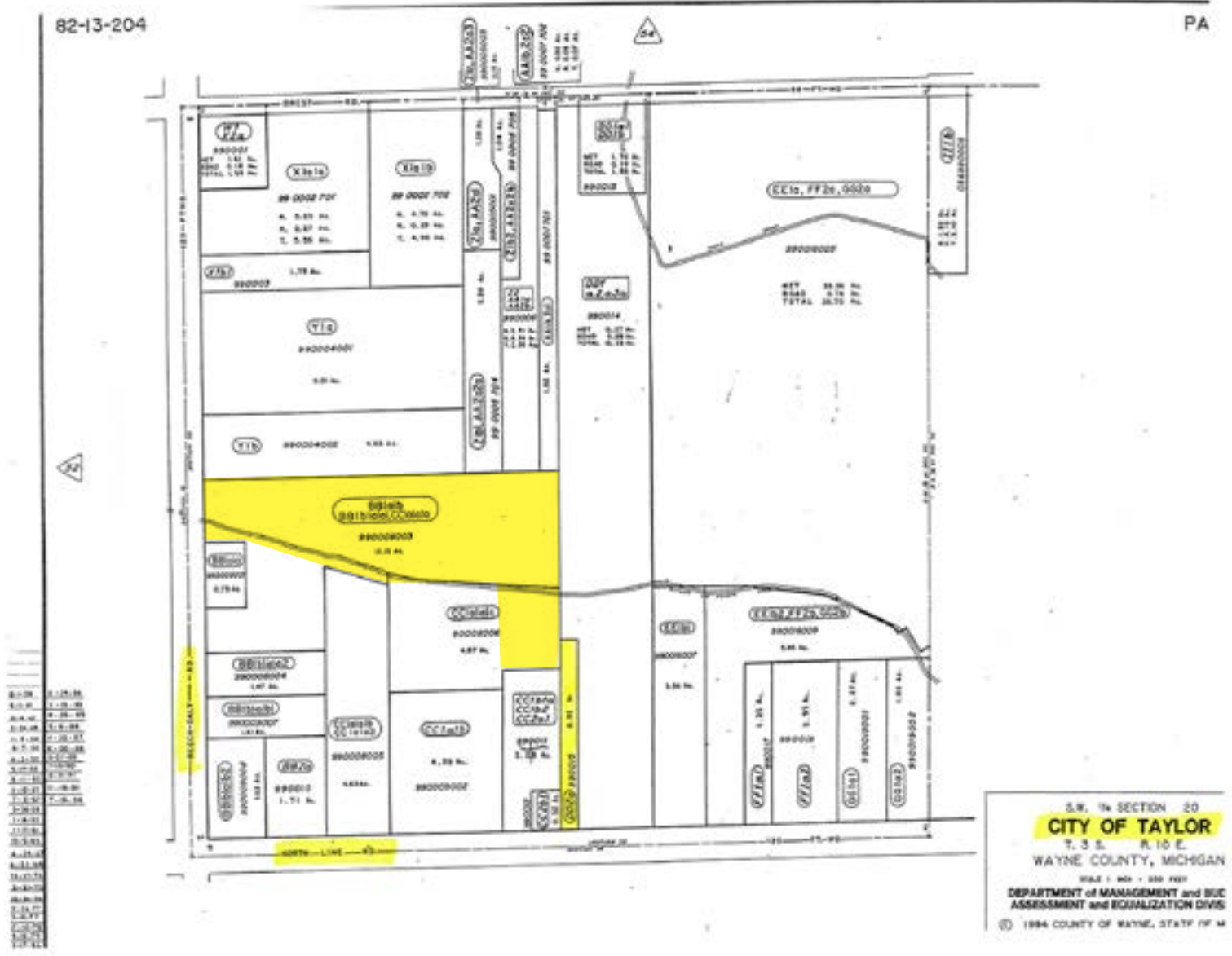
www.burgercollc.com

38345 W. 10 Mile Road, Suite 100  
Farmington Hills, MI 48335

Information contained herein is deemed to be reliable but is not guaranteed and may be withdrawn at any time.

# FOR SALE

Northline and Beech Daly Roads  
Taylor, MI



**Paul Burger, SIOR**  
President  
Cell: 586.202.7800  
paul@burgercollc.com

**Burger**  
& COMPANY  
248.536.2888  
www.burgercollc.com  
38345 W. 10 Mile Road, Suite 100  
Farmington Hills, MI 48335

Information contained herein is deemed to be reliable but is not guaranteed and may be withdrawn at any time.

# FOR SALE

Northline and Beech Daly Roads  
Taylor, MI

---



**Burger**

& COMPANY

**Paul Burger, SIOR**  
President  
Cell: 586.202.7800  
paul@burgercollc.com

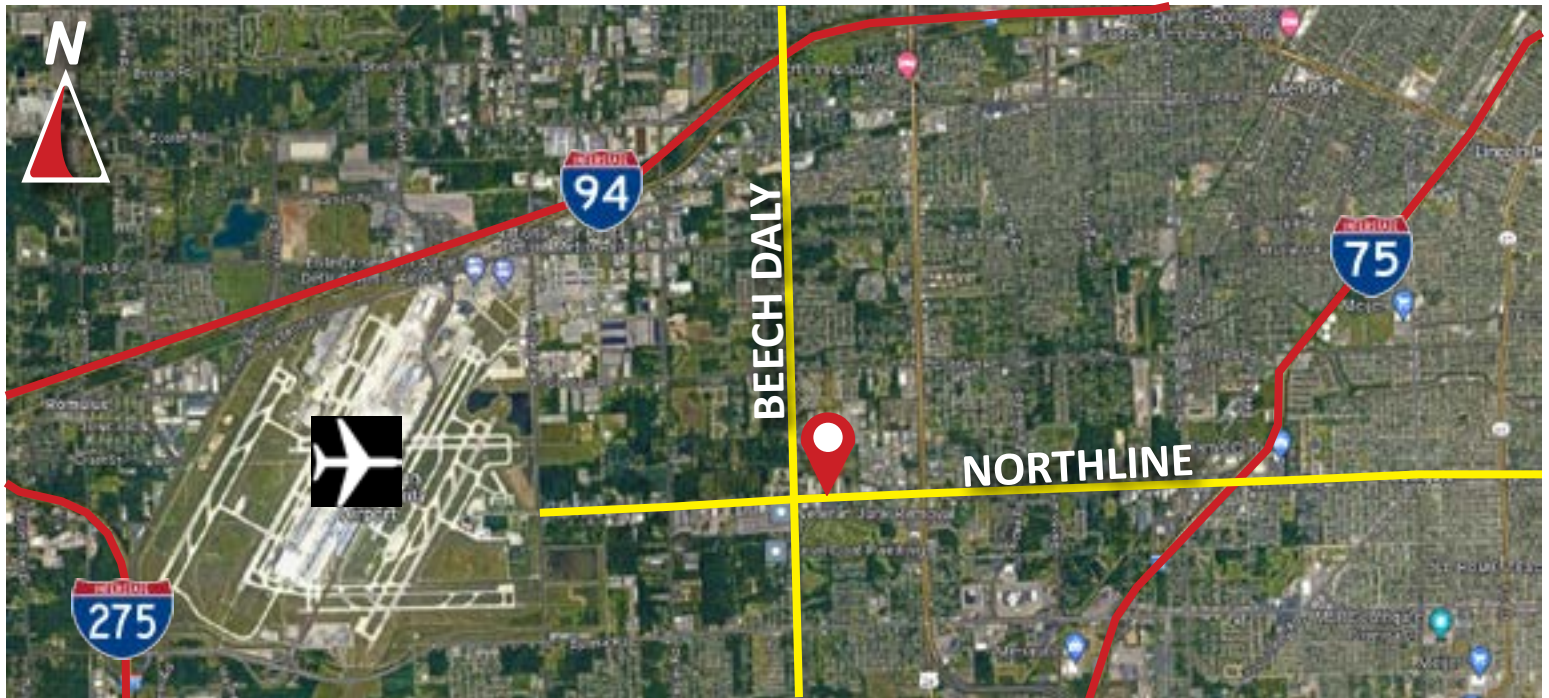
248.536.2888  
www.burgercollc.com  
38345 W. 10 Mile Road, Suite 100  
Farmington Hills, MI 48335

Information contained herein is deemed to be reliable but is not guaranteed and may be withdrawn at any time.



# FOR SALE

Northline and Beech Daly Roads  
Taylor, MI



**Burger**  
& COMPANY

**Paul Burger, SIOR**  
President  
Cell: 586.202.7800  
paul@burgercollc.com

248.536.2888  
www.burgercollc.com  
38345 W. 10 Mile Road, Suite 100  
Farmington Hills, MI 48335

Information contained herein is deemed to be reliable but is not guaranteed and may be withdrawn at any time.