

US-41 FRONTING DEVELOPMENT

12580 S Tamiami Trail | North Port, FL 34287

Land For Sale | Sarasota County



LQ Commercial
REAL ESTATE SERVICES

LQCRE.COM



**CALL FOR
PRICE**



**3 ACRES
SIZE**



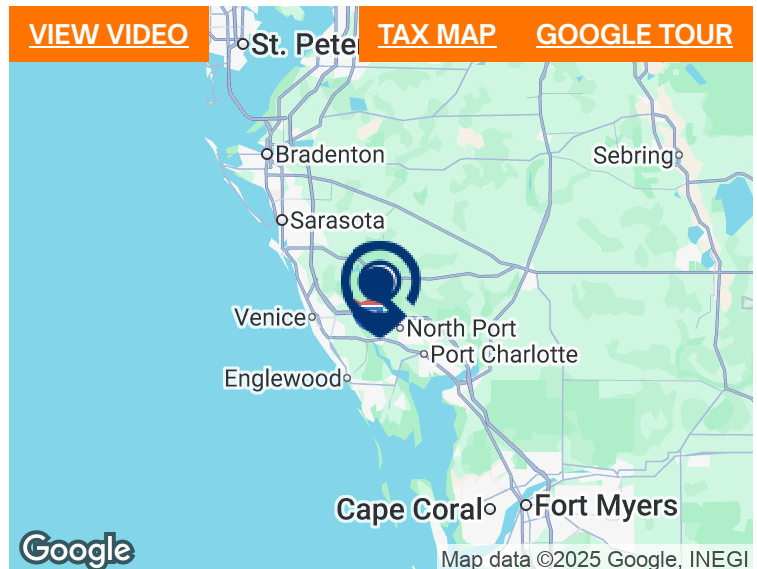
**COMMERCIAL GENERAL
ZONING**

- 3 AC site for sale along dominant US-41 in North Port, Sarasota County.
- Signalized hard corner with excellent visibility and strong access.
- Zoned for general commercial development.
- Over 2.5% recent population growth, with 2.3% more by 2029.
- Minutes from retail hubs including Cocoplum Village Shops and Murdock Circle.
- Tax map: <https://tinyurl.com/u4kj5euk>

[VIEW VIDEO](#)

[TAX MAP](#)

[GOOGLE TOUR](#)



PROPERTIES.LQCRE.COM/RT-NORTH-PORT



**5-MI POPULATION
57,330**



**5-MI AVG HH INCOME
\$97,528**



**5-MI EMPLOYEES
9,532**



LQ Commercial
REAL ESTATE SERVICES

5440 Mariner St #112

Tampa, FL 33609

LQCRE.COM

Paul Rutledge

Senior Broker Associate

D: 813.999.1942

C: 941.228.2198

prutledge@lqcre.com

Zachary Ellis

Associate

D: 813.540.3320

C: 813.493.3437

zellis@lqcre.com

Information obtained from owner(s) or other sources deemed reliable. We have no reason to doubt its accuracy, but cannot guarantee it. All properties subject to change or withdrawal without notice.

US-41 FRONTING DEVELOPMENT

12580 S Tamiami Trail | North Port, FL 34287

Land For Sale | Sarasota County



LQ Commercial
REAL ESTATE SERVICES

LQCRE.COM



LQ Commercial
REAL ESTATE SERVICES

5440 Mariner St #112

Tampa, FL 33609

LQCRE.COM

Paul Rutledge

Senior Broker Associate

D: 813.999.1942

C: 941.228.2198

prutledge@lqcre.com

Zachary Ellis

Associate

D: 813.540.3320

C: 813.493.3437

zellis@lqcre.com

Information obtained from owner(s) or other sources deemed reliable. We have no reason to doubt its accuracy, but cannot guarantee it. All properties subject to change or withdrawal without notice.

US-41 FRONTING DEVELOPMENT

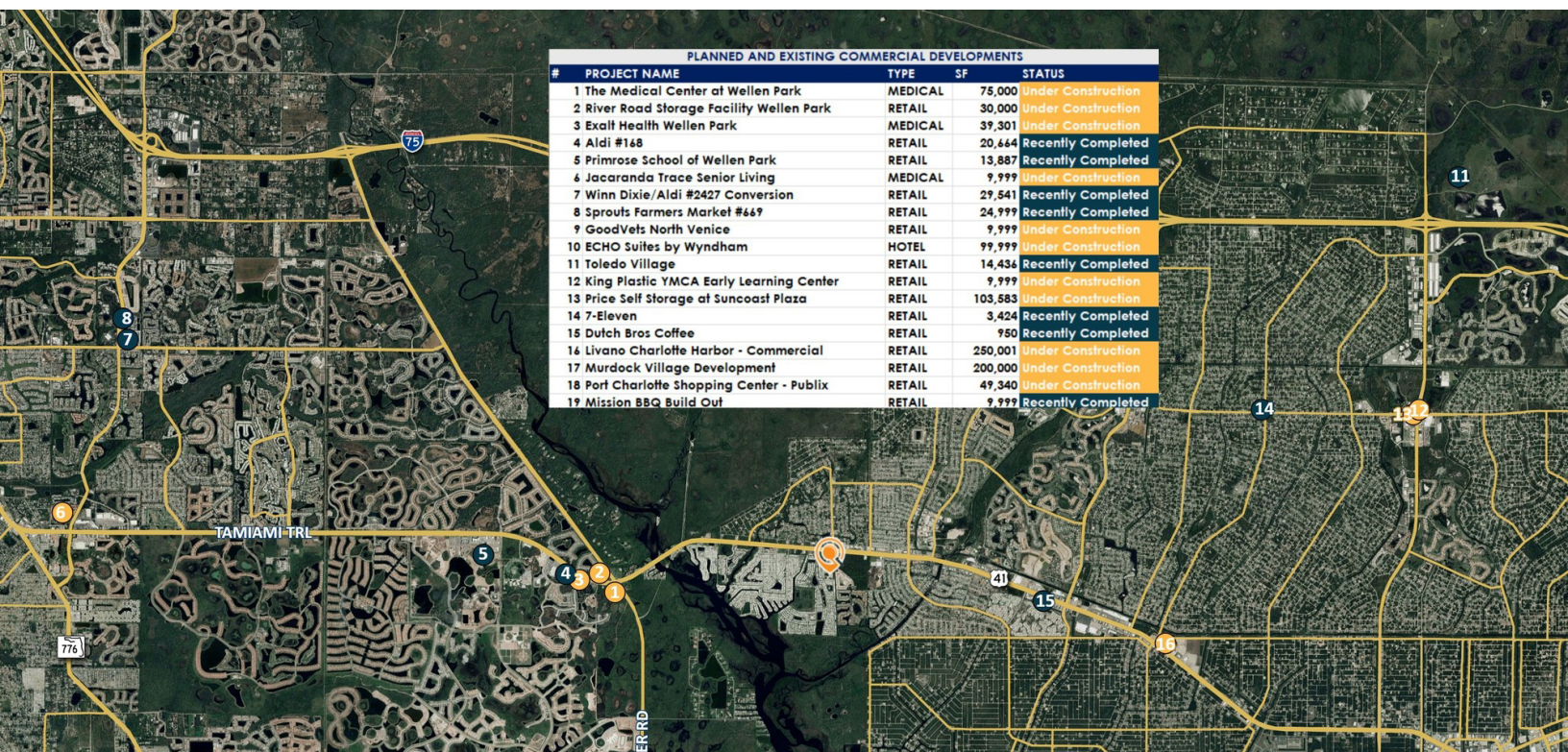
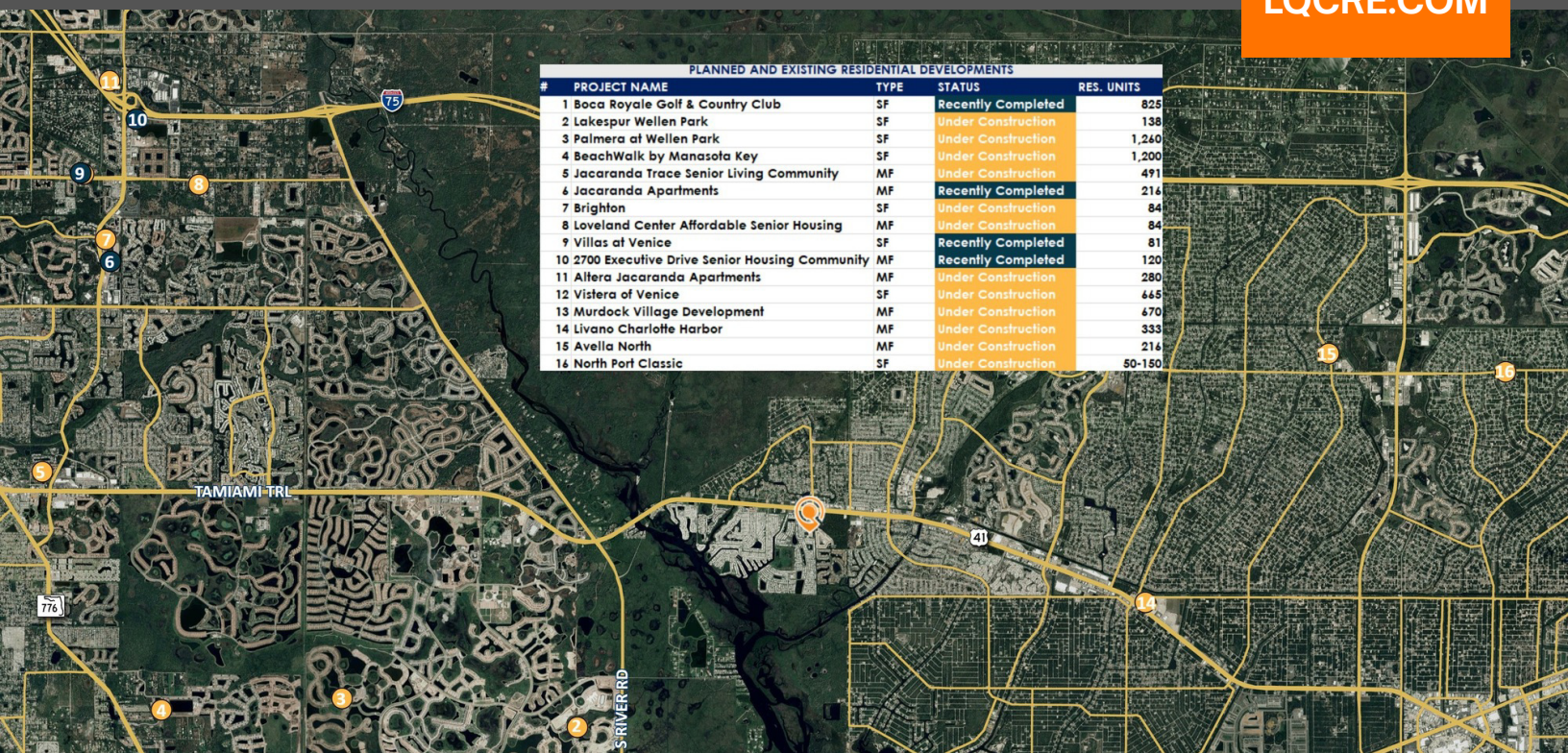
12580 S Tamiami Trail | North Port, FL 34287

Land For Sale | Sarasota County



LQ Commercial
REAL ESTATE SERVICES

LQCRE.COM



5440 Mariner St #112

Tampa, FL 33609

LQCRE.COM

Paul Rutledge

Senior Broker Associate

D: 813.999.1942

C: 941.228.2198

prutledge@lqcre.com

Zachary Ellis

Associate

D: 813.540.3320

C: 813.493.3437

zellis@lqcre.com

Information obtained from owner(s) or other sources deemed reliable. We have no reason to doubt its accuracy, but cannot guarantee it. All properties subject to change or withdrawal without notice.

US-41 FRONTING DEVELOPMENT

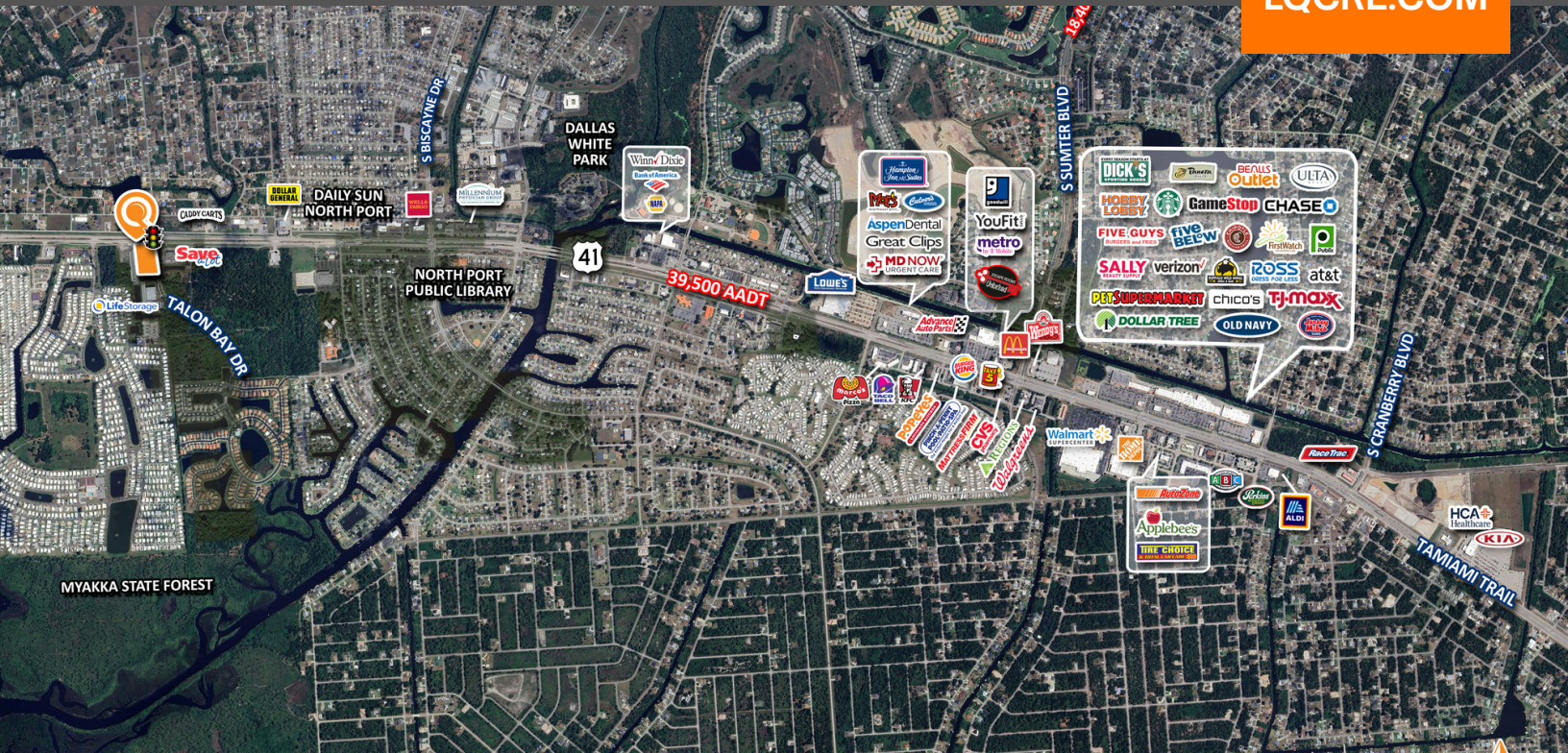
12580 S Tamiami Trail | North Port, FL 34287

Land For Sale | Sarasota County



LQ Commercial
REAL ESTATE SERVICES

LQCRE.COM



LQ Commercial
REAL ESTATE SERVICES

5440 Mariner St #112

Tampa, FL 33609

LQCRE.COM

Paul Rutledge

Senior Broker Associate

D: 813.999.1942

C: 941.228.2198

prutledge@lqcre.com

Zachary Ellis

Associate

D: 813.540.3320

C: 813.493.3437

zellis@lqcre.com

Information obtained from owner(s) or other sources deemed reliable. We have no reason to doubt its accuracy, but cannot guarantee it. All properties subject to change or withdrawal without notice.