

**DEVELOPMENT  
OPPORTUNITY!**

**MAIN ST**

**CUSTER LN**

**AVAILABLE!**

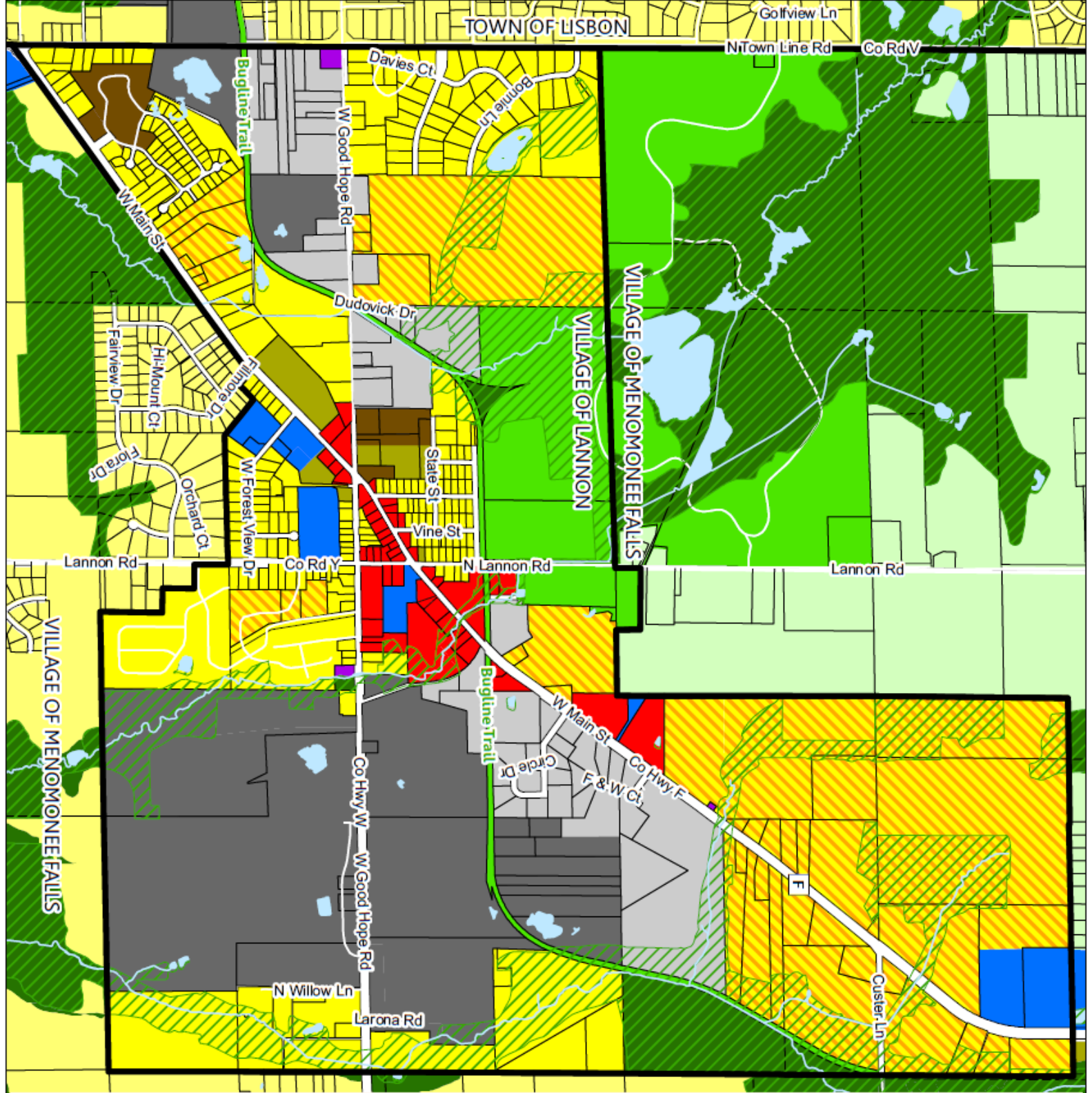
Directions: Turn onto W Lisbon Rd, right onto  
Lannon Rd, right onto W Main St (Hwy F)

Bring your creative ideas! Over 13 acres of vacant land adjacent to Froedtert Hospital and new Multifamily Development. Sanitary and Water services available to site. Located within the TID boundary of the Village of Lannon.

- ±13.8 acres
- Current Zoning: C-1 & A-1
- Future Land Use: Planned Neighborhood & Environmental Corridor (map attached)

CONTACT POINT REAL ESTATE  
FOR ADDITIONAL INFORMATION:  
DANIEL SCARDINO  
(O) 262-424-2807  
(M) 262-424-0437  
(E) DS@POINTRE.COM

\*The information contained herein is believed to be reliable but is not warranted and is subject to change without notice.



# Village of Lannon Comprehensive Plan Future Land Use Map

- Municipal Boundaries
- Surface Water

## Land Use Categories

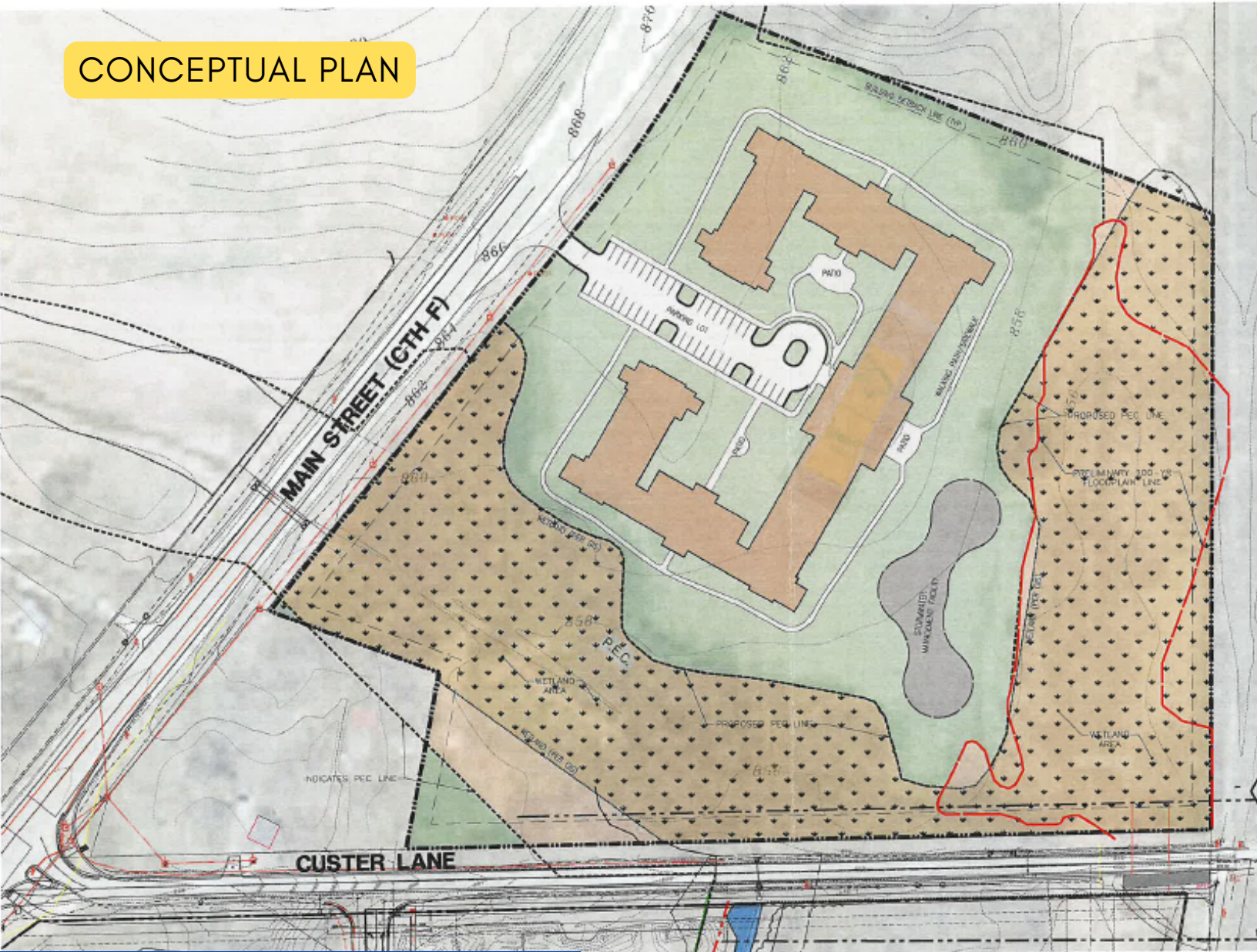
- Single-Family Residential
  - Two-Family Residential
  - Multi-Family Residential
  - Planned Neighborhood\*
  - Commercial
  - Industrial
  - Extractive
  - Governmental/Institutional
  - Utilities
  - Agricultural
  - Recreational
  - Conservation/Open Land
  - Environmental Corridor
- \*Planned Neighborhood Categories:  
 -Single-Family Residential  
 -Two-Family Residential  
 -Multi-Family Residential  
 -Governmental/Institutional  
 -Recreational

0.25 Miles



Date: 12/5/2017  
 Sources: SEWRPC, Waukesha County, US Census Bureau

CONCEPTUAL PLAN



CONTACT POINT REAL ESTATE  
FOR ADDITIONAL INFORMATION:  
DANIEL SCARDINO  
(O) 262-424-2807  
(M) 262-424-0437  
(E) DS@POINTRE.COM

Property Details

- Tax Key: LANV0032495
- 2022 Taxes: \$234.14
- Menomonee Falls School District

\*The information contained herein is believed to be reliable but is not warranted and is subject to change without notice.