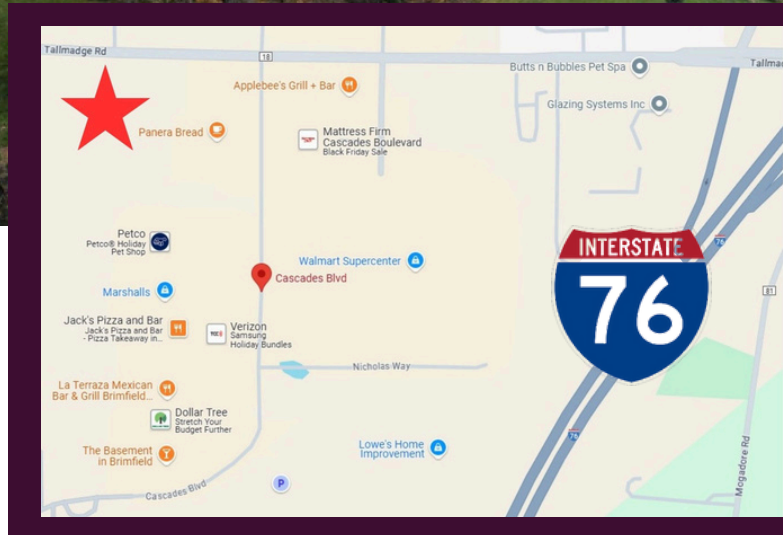




LAND FOR SALE

Approx 10.65 ACRES
Tallmadge Rd.
Brimfield, OH 44240

BERKSHIRE HATHAWAY
HomeServices
Stouffer Realty



Property Highlights

- Parcel Count:** 3 Parcels
- Acres:** Approx 13.98
- Frontage:** Approx 380'
- Depth:** Approx 250'-1,587'
- Zoning:** Integrated Commercial
- Utilities Available:** Electric, Water, Sewer, Gas
- Highway Access:** >1 Min from I-76

I-76 to Tallmadge Road Rt. 18 Exit,
East on Tallmadge Rd.
Property Addresses: 112 Tallmadge Rd.,
124 Tallmadge Rd, & 136 Tallmadge Rd.

Listing Agent

Steve Thompson
REALTOR®
BHHS Stouffer Realty, Inc.
SteveThompson@stoufferrealty.com
330.289.5658



A member of the franchise system of BHH Affiliates, LLC

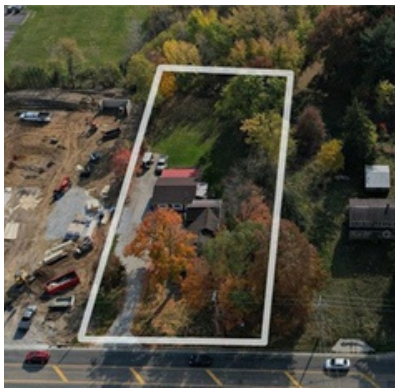


Commercial Land

Tallmadge Rd.



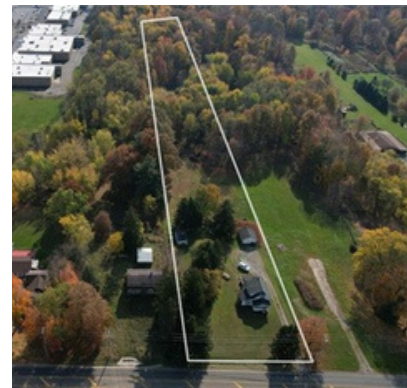
3 Commercial Parcels in the rapidly developing Brimfield Township



Address: 136 Tallmadge Rd.
Price: \$329,900
Zone: Integrated Commercial
Approx. Frontage: 112 ft.
Approx. Depth: 250 ft.
Approx. Acreage: 0.65 acres



Address: 124 Tallmadge Rd.
Price: \$395,000
Zone: Integrated Commercial
Approx. Frontage: 134 ft.
Approx. Depth: 1,587 ft.
Approx. Acreage: 5 acres



Address: 112 Tallmadge Rd.
Price: \$600,000
Zone: Integrated Commercial
Approx. Frontage: 134 ft.
Approx. Depth: 1,587 ft.
Approx. Acreage: 5 acres



STEVE THOMPSON
REALTOR®

330-289-5658



BERKSHIRE HATHAWAY
HomeServices

Stouffer Realty