

# 13323 South Gessner Road - Suite 200

Missouri City, TX

## Key Facts

Property type	Industrial space
Building size	166,400 SF
Space available	24,960 SF



Scan to view our full  
Houston footprint.



## Contact Us

Learn more about this property or schedule a tour by reaching out to our local investment and leasing officer.

**Lexie Curry**

+1 (281) 635-4548

lexie.curry@eqtpartners.com

# 13323 South Gessner Road - Suite 200

Missouri City, TX

## BUILDING SPECIFICATIONS

Building Size: 166,400 SF

Available Size: 24,960 SF (Available 5/1/2026)

Total Office Space: Approx. 2,050 SF

Total Warehouse Space: 22,909 SF

Clear Height: 28'

Building Dimensions: 160' D x 156' W

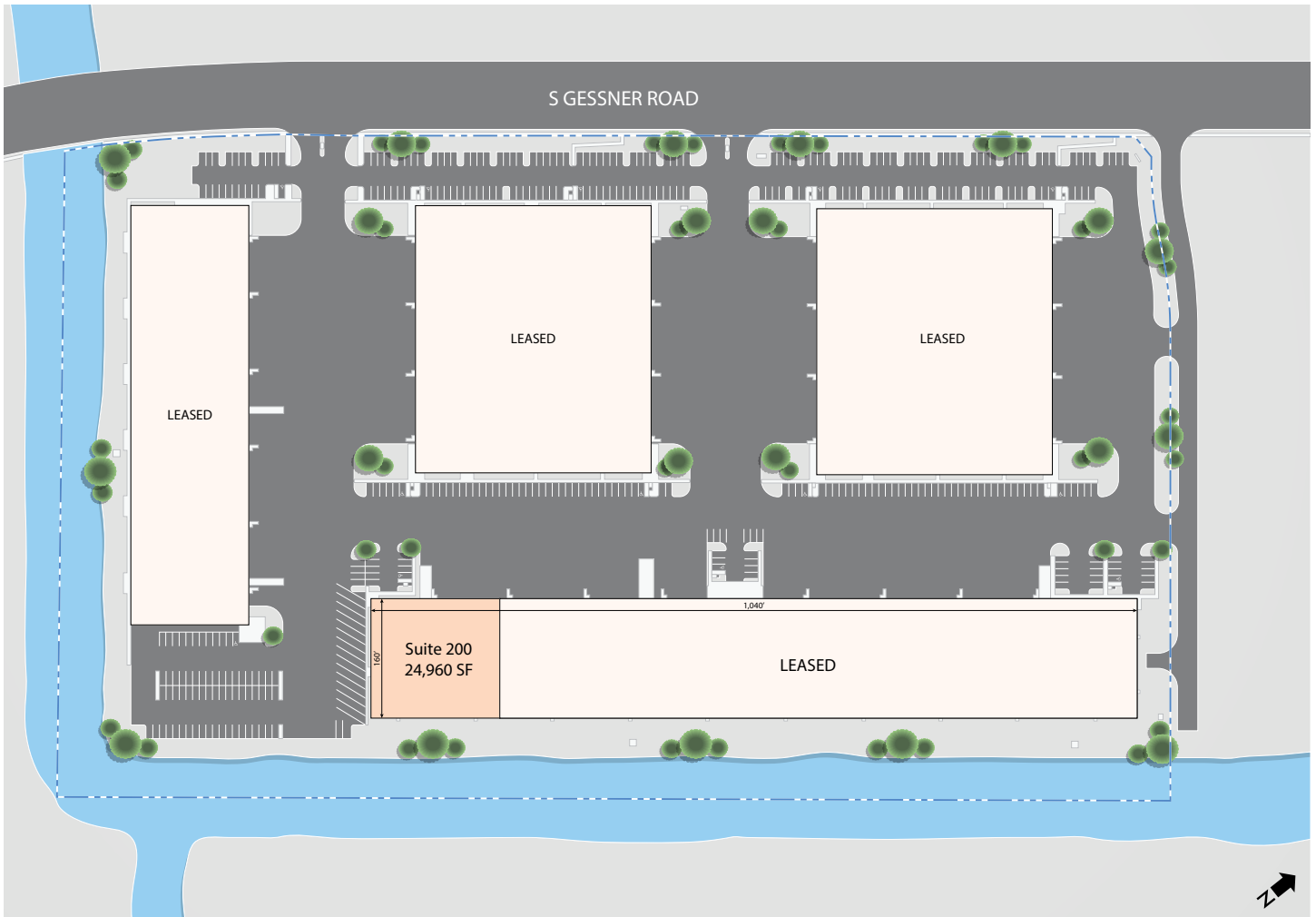
Dock-High Doors: 5 (9'x 10'), 3 equipped w/ levelers and seals

Drive-In Doors: 1 (12' x 10') w/ ramp

Column Spacing: 49' x 51'

Auto Parking: 12 spaces w/ additional capabilities in west side trailer storage

Trailer Parking: 14 off dock trailer stalls



## Contact Us

Learn more about this property or schedule a tour by reaching out to our local investment and leasing officer.

**Lexie Curry**

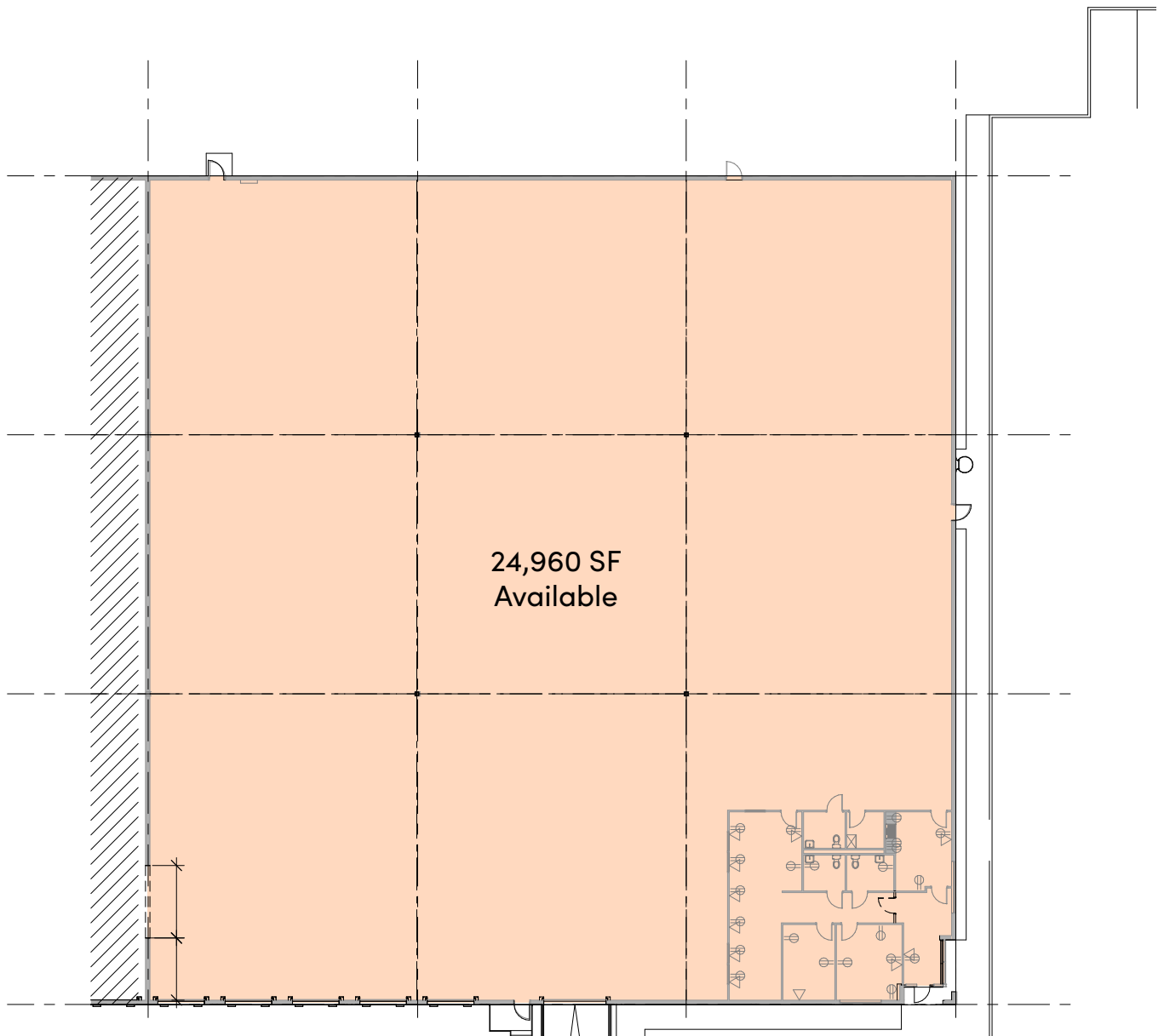
+1 (281) 635-4548

lexie.curry@eqtpartners.com

# 13323 South Gessner Road - Suite 200

Missouri City, TX

## FLOOR PLAN



### Contact Us

Learn more about this property or schedule a tour by reaching out to our local investment and leasing officer.

**Lexie Curry**

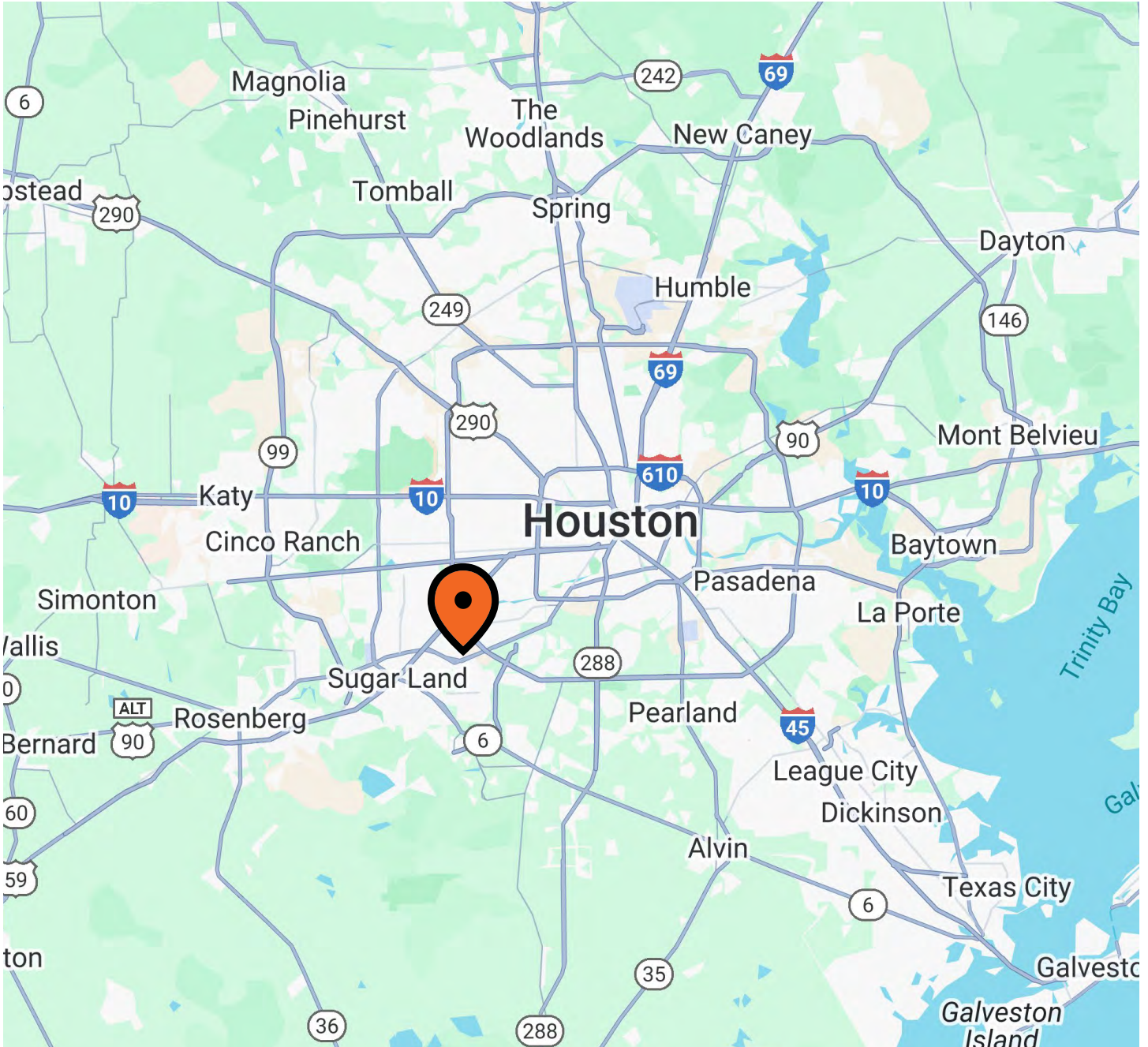
+1 (281) 635-4548

[lexie.curry@eqtpartners.com](mailto:lexie.curry@eqtpartners.com)

# 13323 South Gessner Road - Suite 200

Missouri City, TX

## LOCATION



## Contact Us

Learn more about this property or schedule a tour by reaching out to our local investment and leasing officer.

**Lexie Curry**

+1 (281) 635-4548

[lexie.curry@eqtpartners.com](mailto:lexie.curry@eqtpartners.com)

# 13323 South Gessner Road - Suite 200

Missouri City, TX



## Contact Us

Learn more about this property or schedule a tour by reaching out to our local investment and leasing officer.

**Lexie Curry**

+1 (281) 635-4548

[lexie.curry@eqtpartners.com](mailto:lexie.curry@eqtpartners.com)