

Retail & Office Space for Lease

310 N 7th Street

Williamsburg, Brooklyn, NY

Location:

Meeker Avenue - Between N 6th & N 7th Streets

Floors:

Ground Floor: 6,194 SF (Divisible 1,000 SF+)

Second Floor: 6,881 SF (Divisible 1,000 SF+)

Frontage:

N 7th Street: 50 Feet

N 6th Street: 40 Feet

Meeker Avenue: 200 Feet

Ceiling Heights: 15 FT

Price: Upon Request

Highlights:

- Brand new Ground Floor & Second Floor Retail or Office Space at the base of a Luxury Residential Building
- 300 Feet of Wraparound Frontage on 3 Streets
- Direct proximity to Metropolitan Ave G Train – 1 Block
- Direct proximity to Bedford Ave L Train – 3 Blocks
- Landlord can offer a Custom Build-out for Tenant
- All uses considered



Local Attractions:



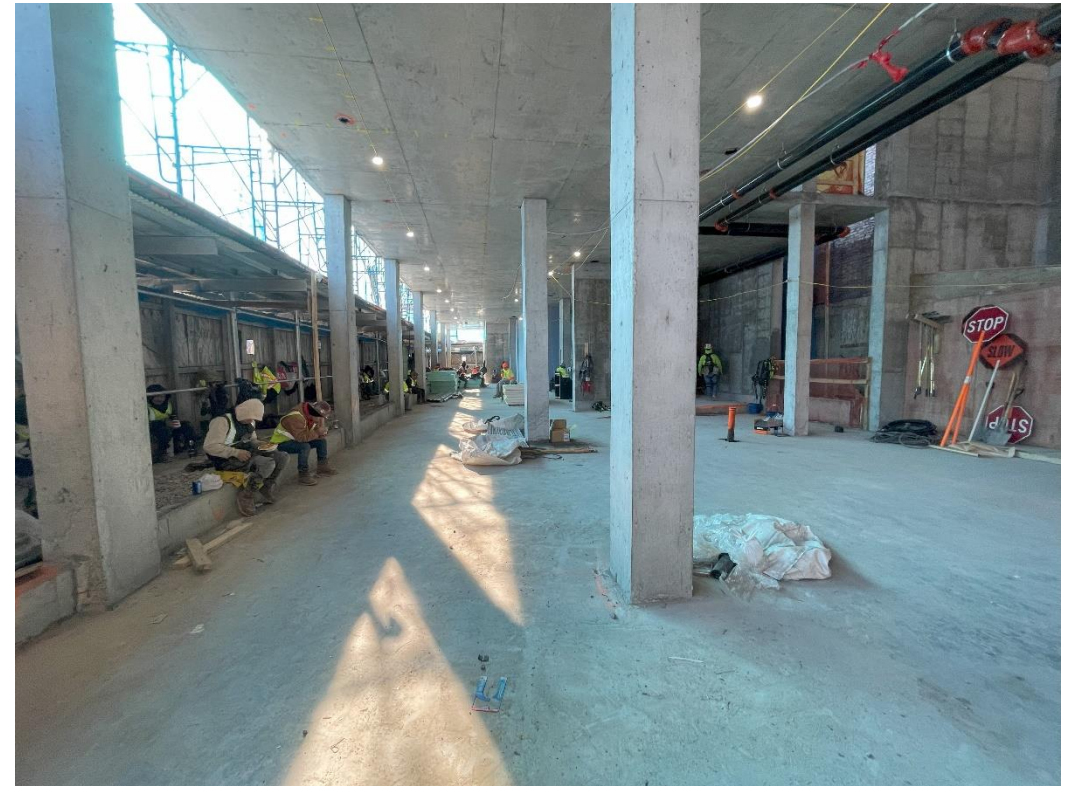
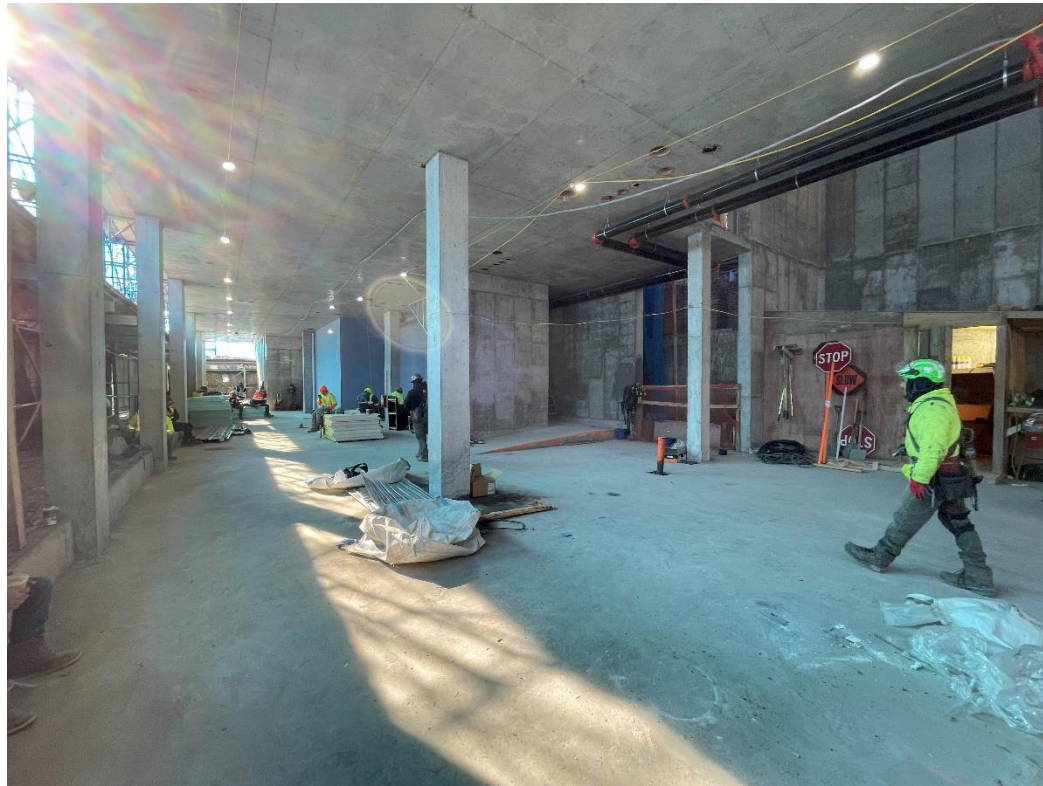
Call/Text:
516 350 2621

All information is from sources deemed reliable. No representation is made and we do not guarantee the accuracy of any information provided. All information must be independently verified. The value of any real estate investment is dependent on a variety of factors and should be evaluated carefully by prospective purchasers/ or tenants.

310 N 7th Street

Photos

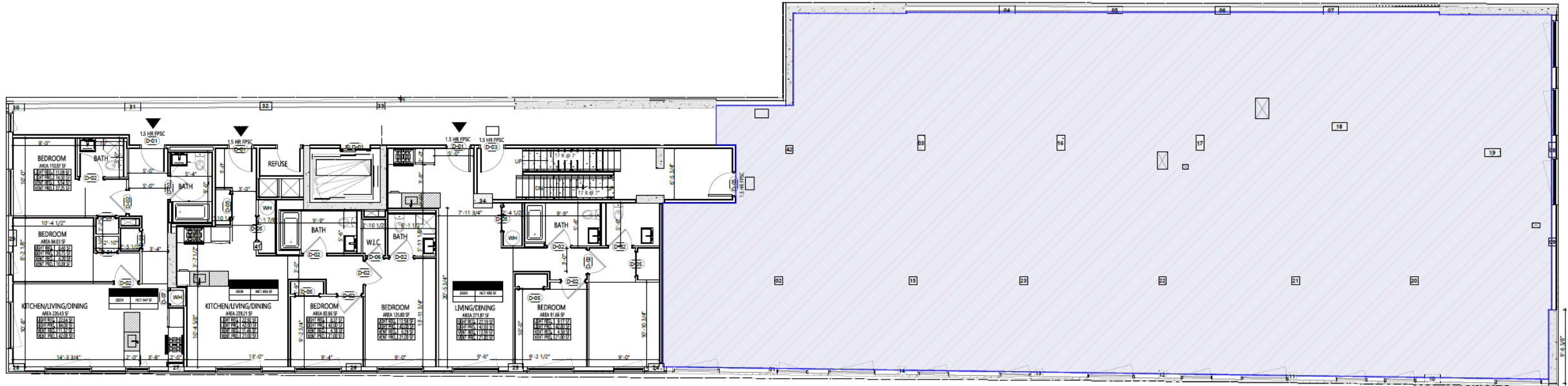
Williamsburg, Brooklyn, NY



Floorplans

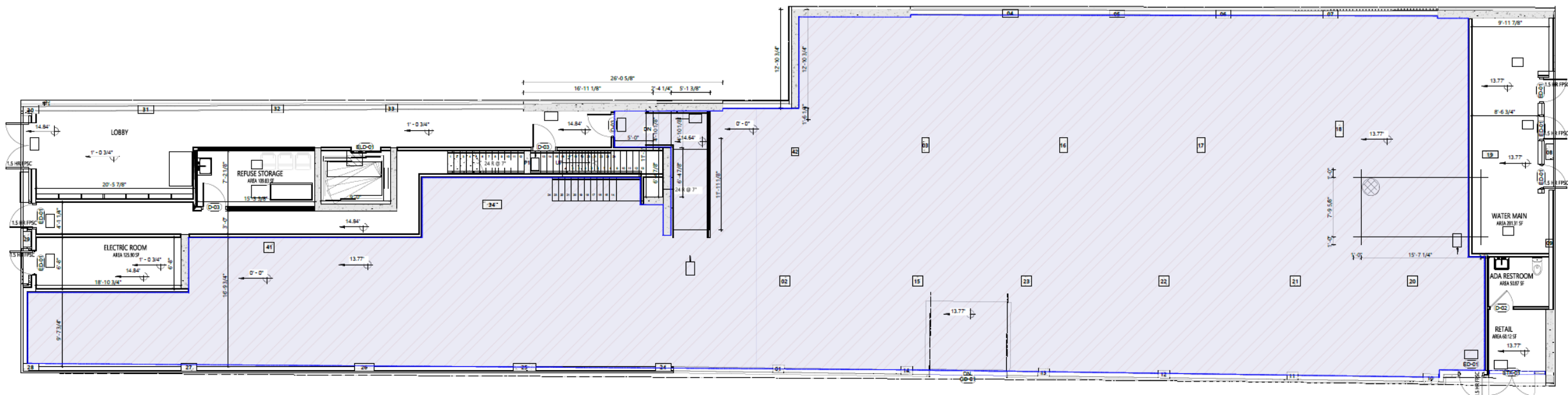
Second Floor

6,881 SF (Divisible 1,000 SF+)



Ground Floor

6,194 SF (Divisible 1,000 SF+)



CONTACT

JOSH SLOAN
516-350-2621
JS@SLOAN-RE.COM

All information is from sources deemed reliable. No representation is made and we do not guarantee the accuracy of any information provided. All information must be independently verified. The value of any real estate investment is dependent on a variety of factors and should be evaluated carefully by prospective purchasers/ or tenants.