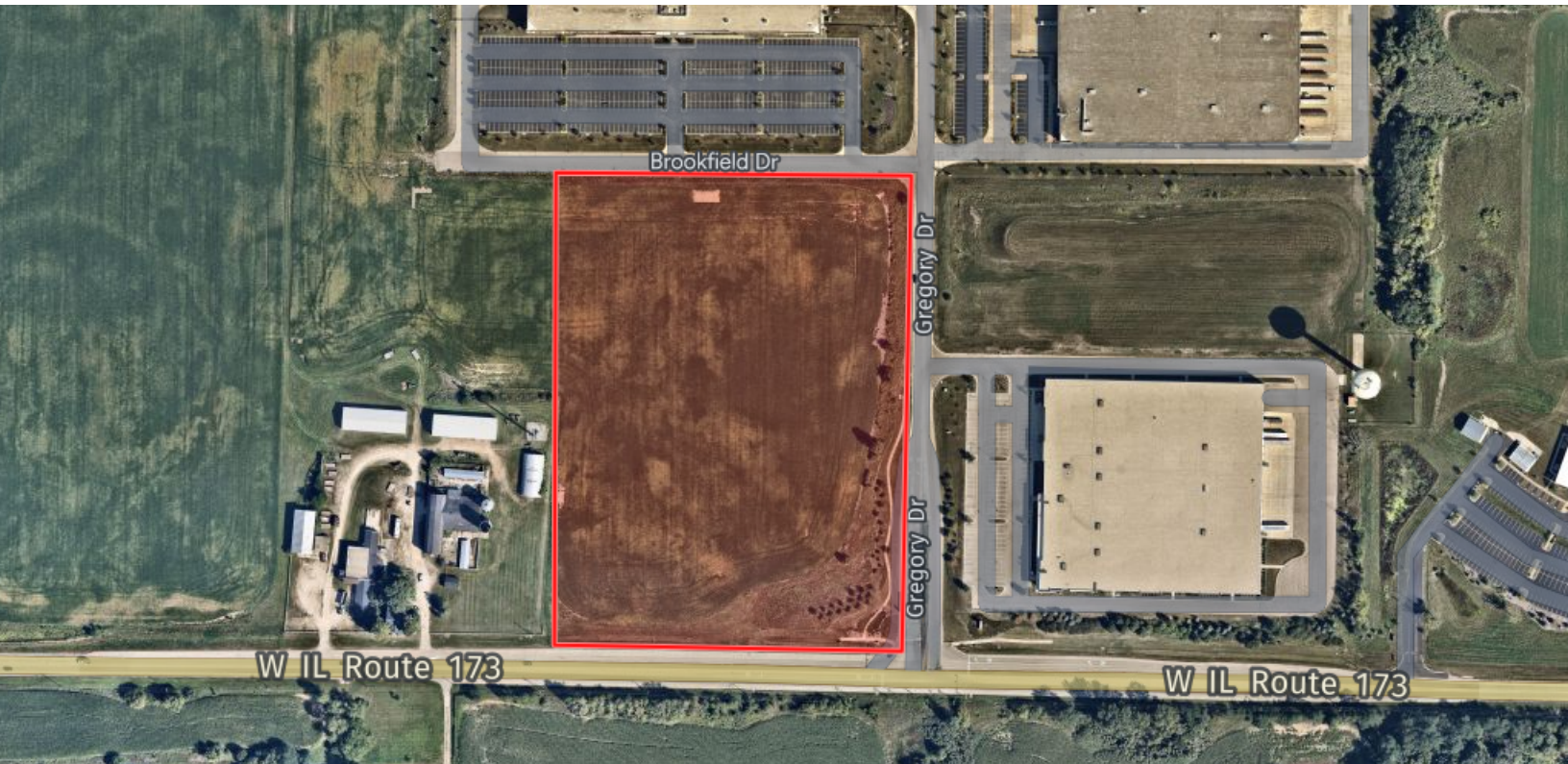


# LAND FOR SALE

RT 173 & GREGORY DRIVE, ANTIOCH, IL 60002



## OFFERING SUMMARY

<b>Lot Size</b>	13.47 Acres
<b>Traffic Count</b>	15,500 VPD
<b>Zoning</b>	M-1
<b>Sale Price</b>	STO

## PROPERTY HIGHLIGHTS

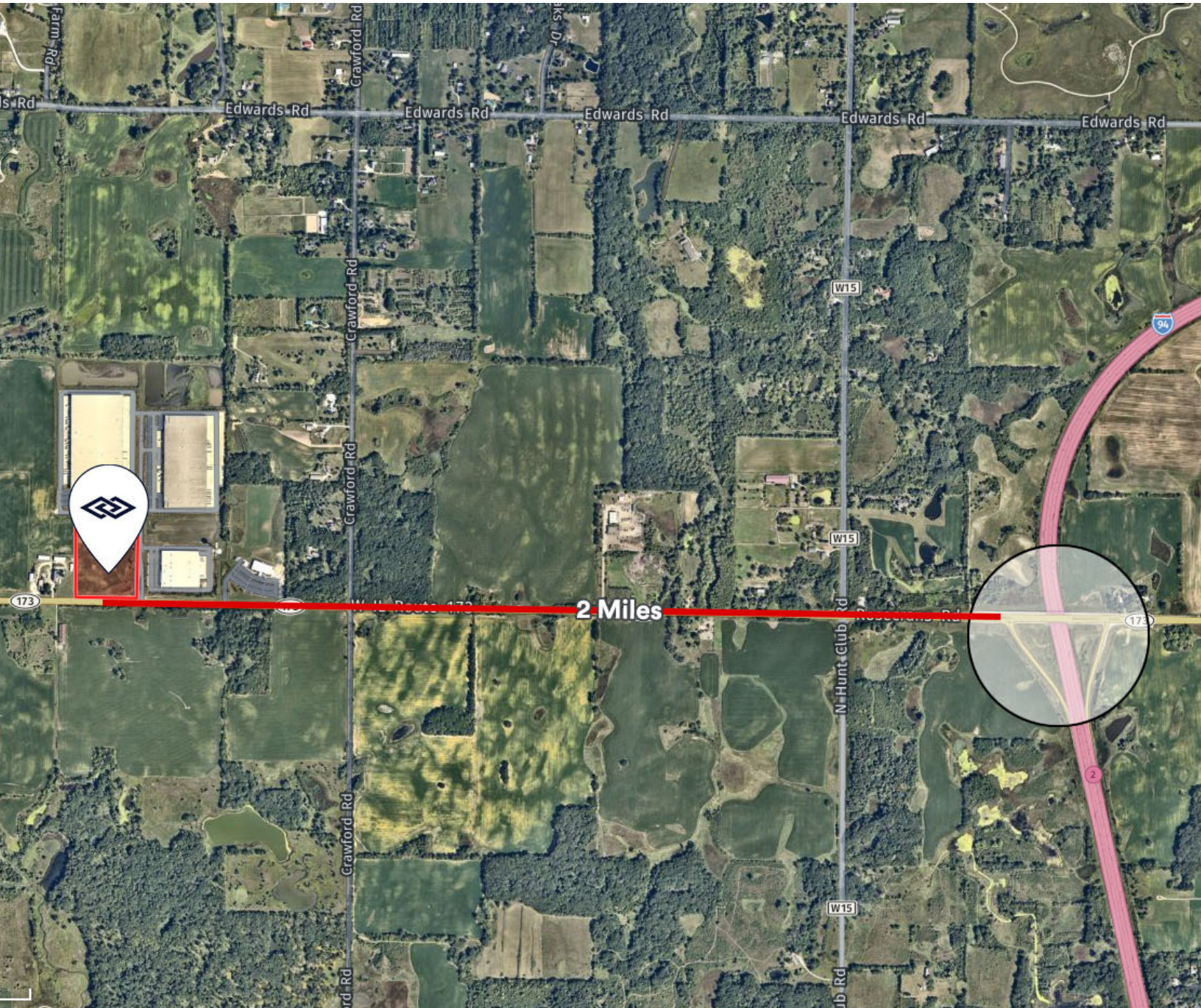
- Ready for immediate development
- Located within Antioch Corporate Center
- Improved landsite
- Two (2) miles from I-94 Interchange
- Corner lot
- Lighted intersection
- Located within a TIF District
- Strong nearby labor market
- Off-site detention
- Pin: 03-18-101-007



**JERRY SULLIVAN** | Principal | 773.714.2092 | jsullivan@darwinpw.com  
**TERRY LYNCH, SIOR** | Vice President | 773.714.2142 | tlynch@darwinpw.com

# LAND FOR SALE

RT 173 & GREGORY DRIVE, ANTIOCH, IL 60002



**JERRY SULLIVAN** | Principal | 773.714.2092 | [jsullivan@darwinpw.com](mailto:jsullivan@darwinpw.com)  
**TERRY LYNCH, SIOR** | Vice President | 773.714.2142 | [tlynch@darwinpw.com](mailto:tlynch@darwinpw.com)