



Moses Tucker
PARTNERS

Little Rock (HEADQUARTERS)
200 River Market Ave, Suite 300
Little Rock, AR 72201
501.376.6555

Bentonville (BRANCH)
805 S Walton Blvd, Suite 123
Bentonville, AR 72712
479.271.6118

HOSPITALITY PROPERTY FOR SALE

10520 W Markham Street, Little Rock, AR



CONTACT US TODAY
501.376.6555 | [mosestucker.com](https://www.mosestucker.com)



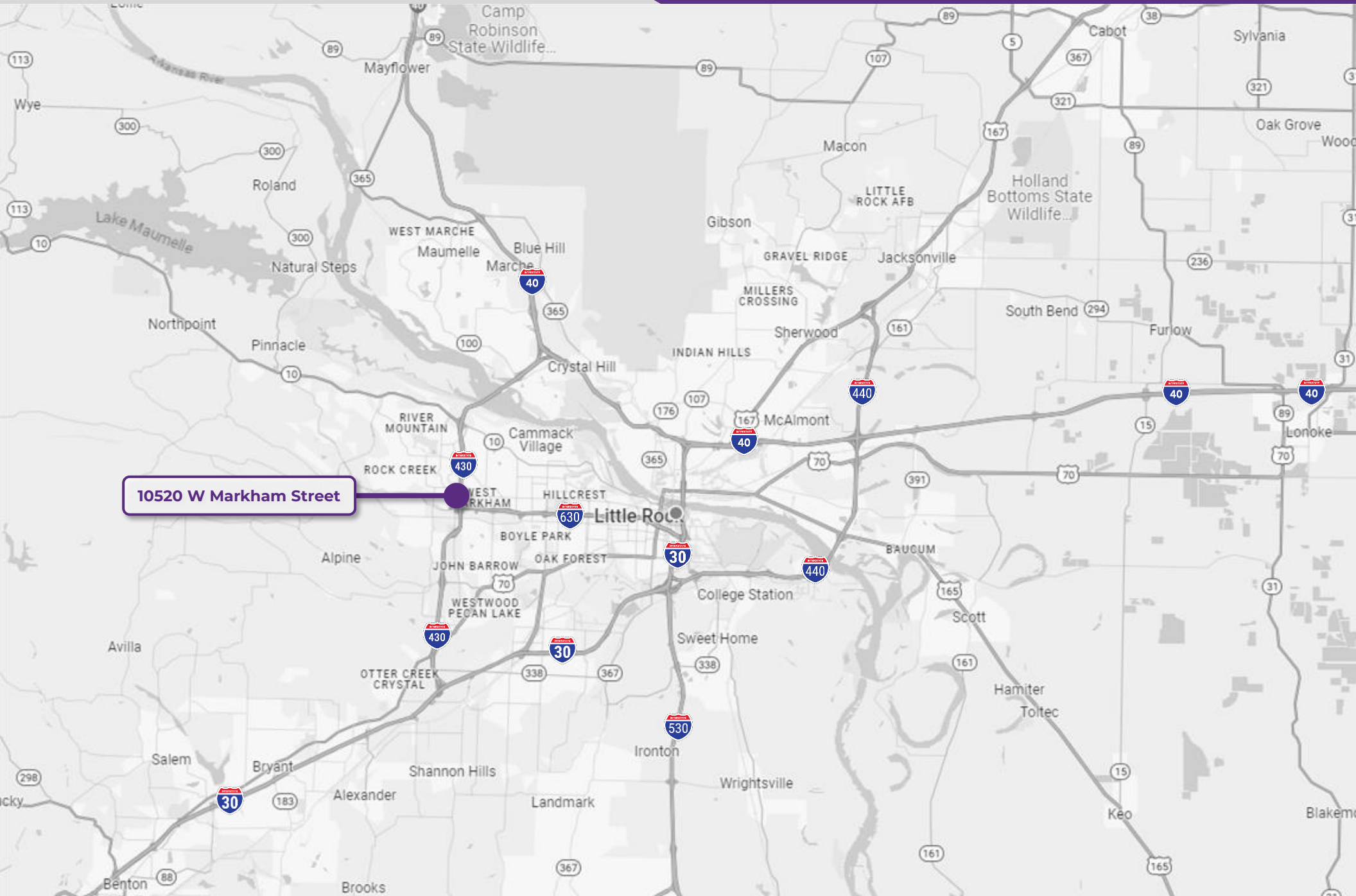
OFFERING SUMMARY

Offering	For Sale
Address	10520 W Markham Street, Little Rock, AR 72205
Property Type	Hospitality
Price	\$8,200,000
Building Size	±46,904 SF
Number of Rooms	80
Stories	4
Year Built	2006
Lot Size	±1.43 Acres
Zoning	O2

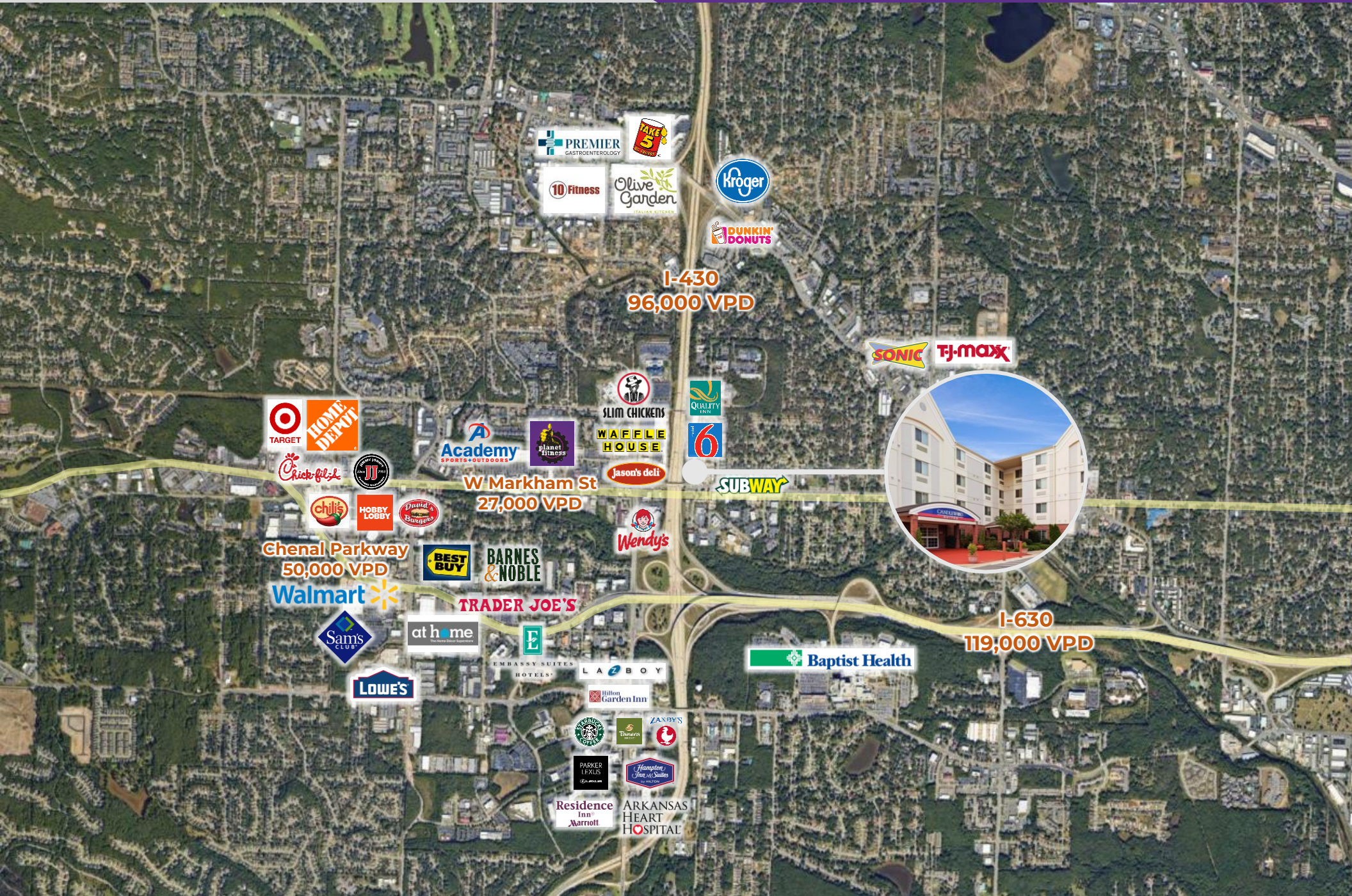
PROPERTY HIGHLIGHTS

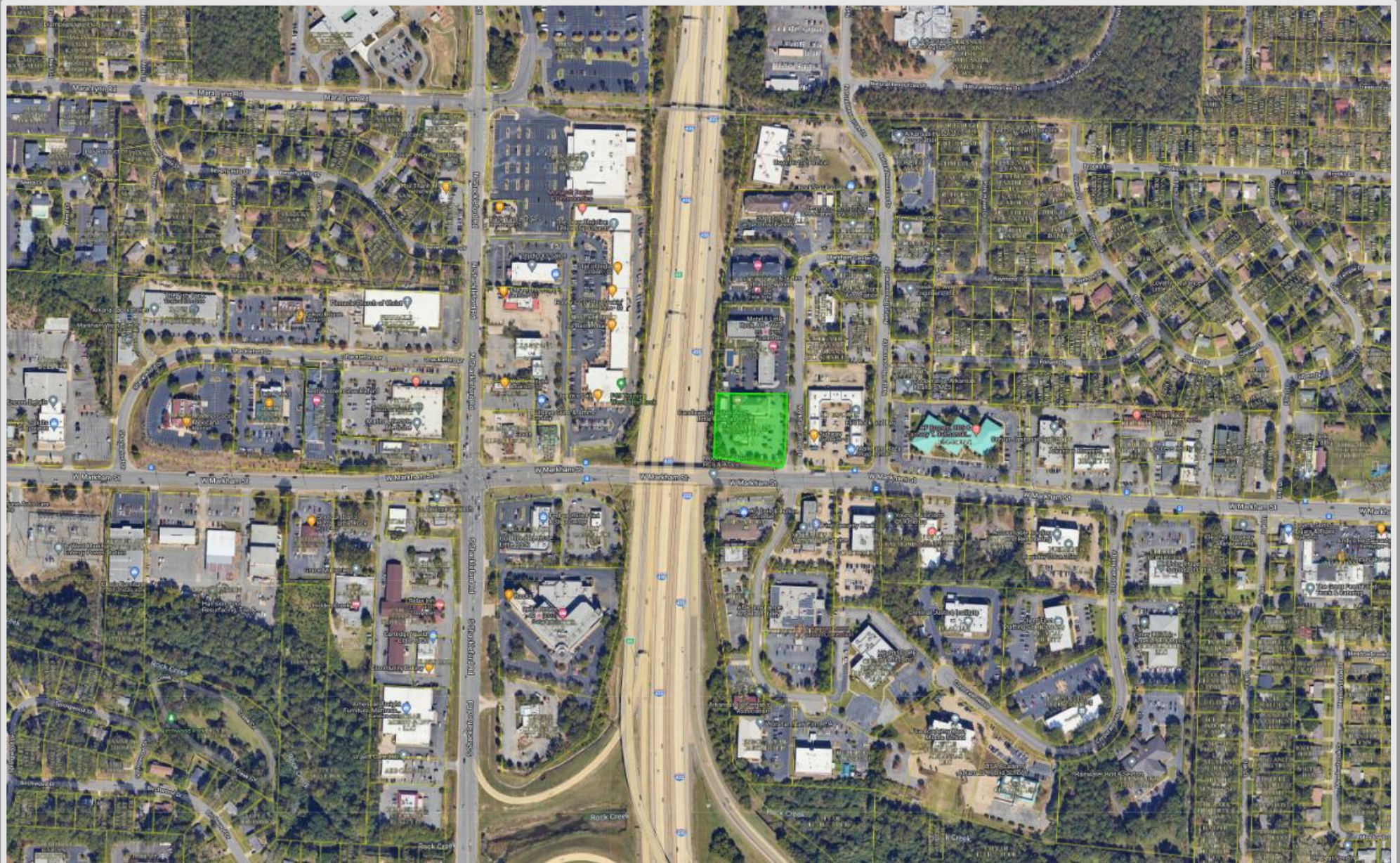
- Hotel consisting of 80 rooms, a business center, fitness center, on-site retail, and a meeting event space
- Financials provided upon request
- Approximately 1.0 mile from Interstate 430 (96,000 VPD)
- Traffic counts: W Markham St (27,000 VPD) and Interstate 430 (96,000 VPD)





10520 W Markham Street









LITTLE ROCK, AR



Little Rock is the capital of Arkansas and the state's largest municipality, with over 202,000 people calling it home. It is considered where "America Comes Together," boasting 40% of the nation's population and buying power within a 550-mile radius of the city center.

Notably, Little Rock is considered one of the "Top 10 Places For Young Professionals To Live" ([Forbes 2023](#)), a "Best Place for Business and Careers" ([Forbes 2019](#)), one of the "Best Travel-Worthy State Capitals" ([USA Today 2014](#)), and one of "America's 10 Great Places to Live" ([Kiplinger's Personal Finance 2013](#)).

Central Arkansas has experienced significant population growth over the past decade due to the three major universities that call the area home, a growing technology sector, and a variety of government- and business-related industries. Major corporations headquartered in the Little Rock metroplex include Dillard's, Windstream Communications, and Acxiom. One of the largest public employers in the state, with more than 10,000 employees, is the University of Arkansas for Medical Sciences and its affiliates, which have a total economic impact in Arkansas of ~\$5 billion per year. Simultaneously to the population growth, Central Arkansas's tourism industry is booming, with 10 million+ visitors flocking to the region each year.

DEMOGRAPHICS*

Population

3 MILES

64,305

5 MILES

139,828

10 MILES

318,354

Households

30,319

63,240

138,417

Average Age

40.5

39.9

39.9

Average Household Income

\$106,063

\$102,823

\$95,050

Businesses

3,428

6,739

13,005

**Demographic details based on property location*

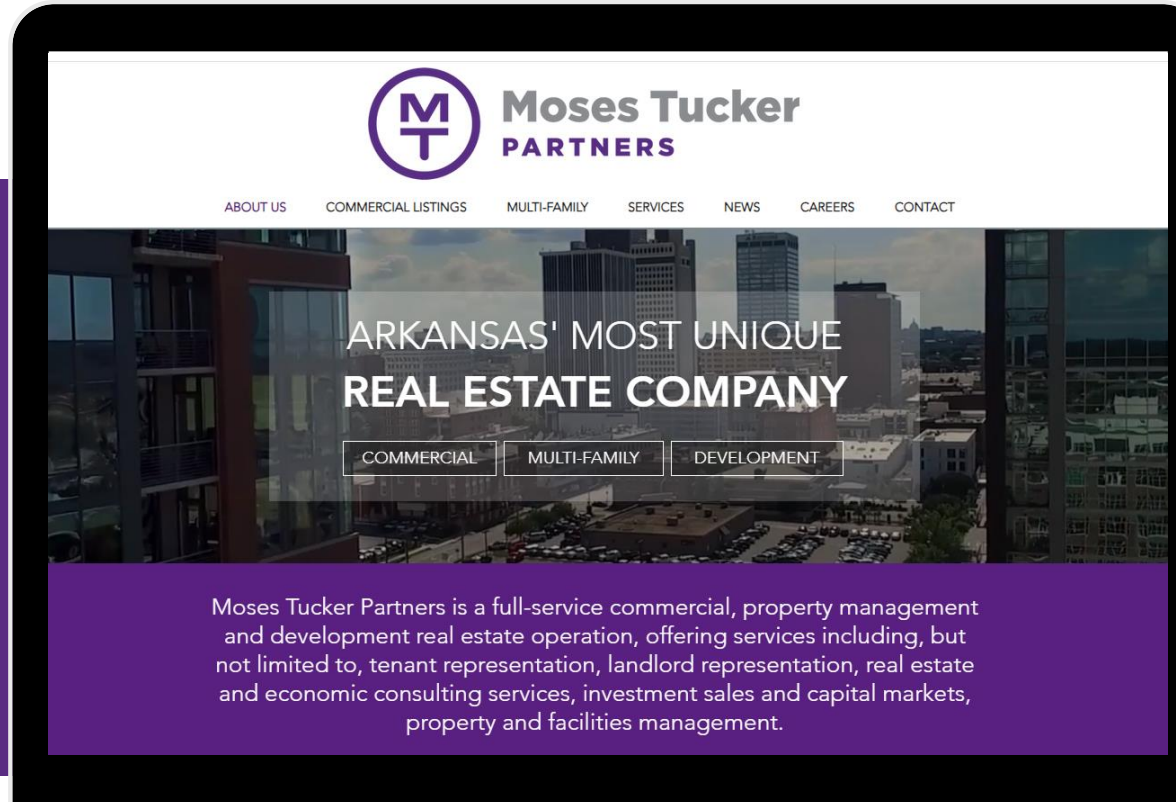
CONNECT

 (501) 376-6555

 www.mosestucker.com

 info@mosestucker.com

 **200 River Market Ave, Suite 300,
Little Rock, AR 72201**



Chris Moses
Principal, President & CEO
cmoses@mosestucker.com

Greyson Skokos
Principal & Vice President of Brokerage
gskokos@mosestucker.com

Chris Monroe
Principal & Vice President, Corporate Services
cmonroe@mosestucker.com

Thomas Schmidt
Brokerage Associate
tschmidt@mosestucker.com

DISCLAIMER
Moses Tucker Partners represents the owner of the property represented herein. Although all information furnished regarding property for sale, rental, or financing is from sources deemed reliable, such information has not been verified and no express representation is made nor is any to be implied as to the accuracy thereof and it is submitted subject to errors, omissions, change of price, rental or other conditions, prior sale, lease or financing, or withdrawal without notice and to any special conditions imposed by our principal.