

211 SCHERMERHORN STREET, BROOKLYN, NY 11201

FOR LEASE

3,400 – 7,600 SF NEW DEVELOPMENT RETAIL SPACE WITH GLASS FRONTAGE

Between Hoyt Street & Bond Street



SHLOMI BAGDADI
212.433.3355 x101
sb@tristatecr.com

LEO BEDA
212.433.3355 x103
leo.b@tristatecr.com

TRI STATE COMMERCIAL®

PROPERTY SUMMARY

LOCATION

Located in the Downtown Brooklyn neighborhood.

HIGHLIGHTS

- New Development
- Over 18,000 Residential Units are Under Development Within a 1/2 Mile

SPACE DETAILS

- First Floor: 4,200 SF
- Basement: 3,425 SF
- Total Available Space: 7,600 SF
- 12 FT Ceilings on the Ground Floor
- 13 FT Ceilings on the Lower Level
- Elevator Dedicated to The Retail Space
- Glass Frontage
- At the Base of a 48-Unit Condo Building

TRANSPORTATION

G A C Trains at Hoyt-Schermerhorn Street

2 3 Trains at Hoyt Street

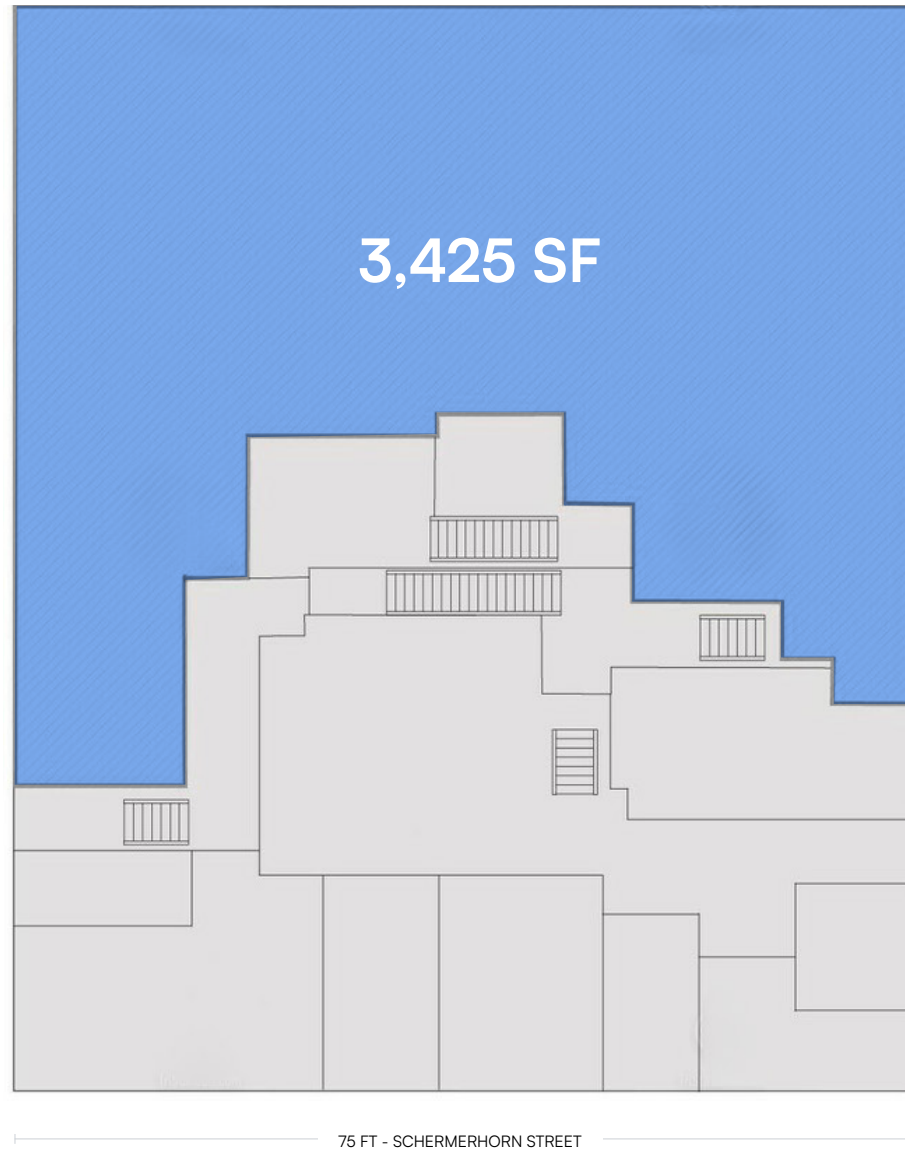
B67 B41 B38 B52 B45 B26 B25 B63 B62 Bus Lines

NEIGHBORS

Chhipotle Mexican Grill, Subway, CVS Pharmacy, Papa John's Pizza, Bank of America, Walgreen's Pharmacy, McDonald's, Foot Locker, Chase Bank, TD Bank, Starbucks, Domino's Pizza, Burger King, Dunkin', Raising Cane's, Popeyes Louisiana Kitchen, Apple Store, Smash Burger, and more!



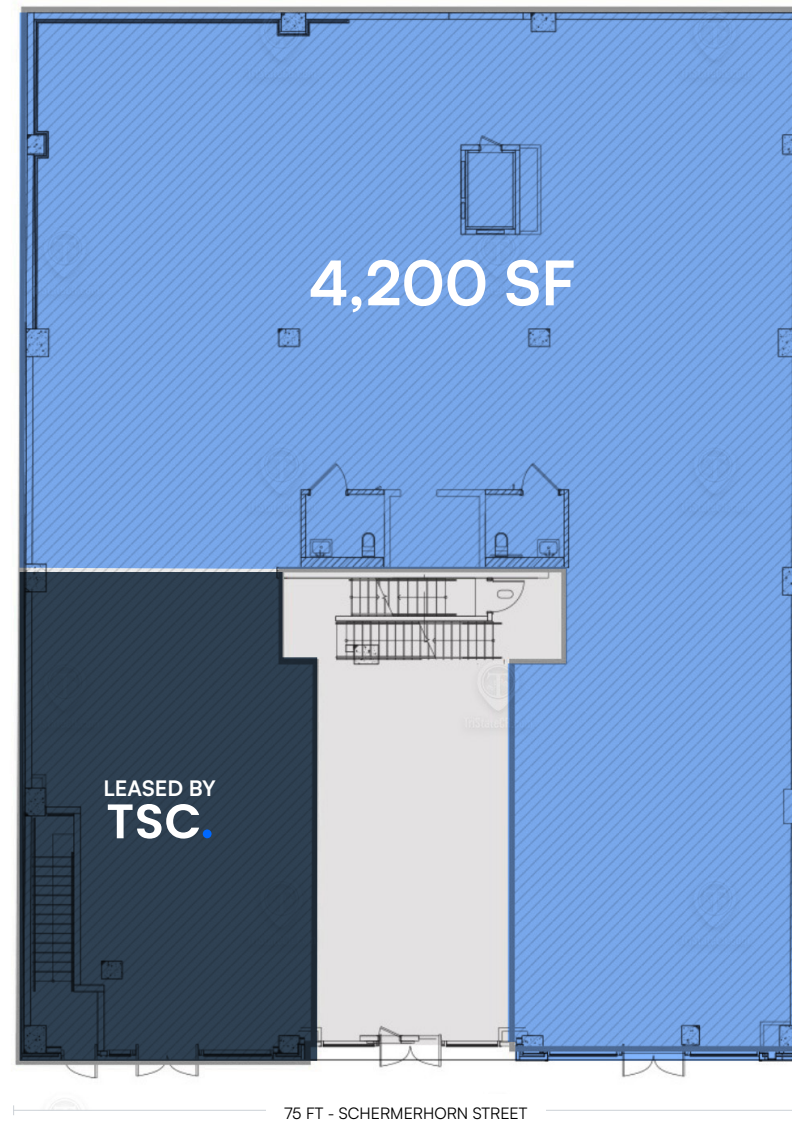
FLOOR PLANS



BASEMENT

All square footages are approximate

FLOOR PLANS



FIRST FLOOR

All square footages are approximate

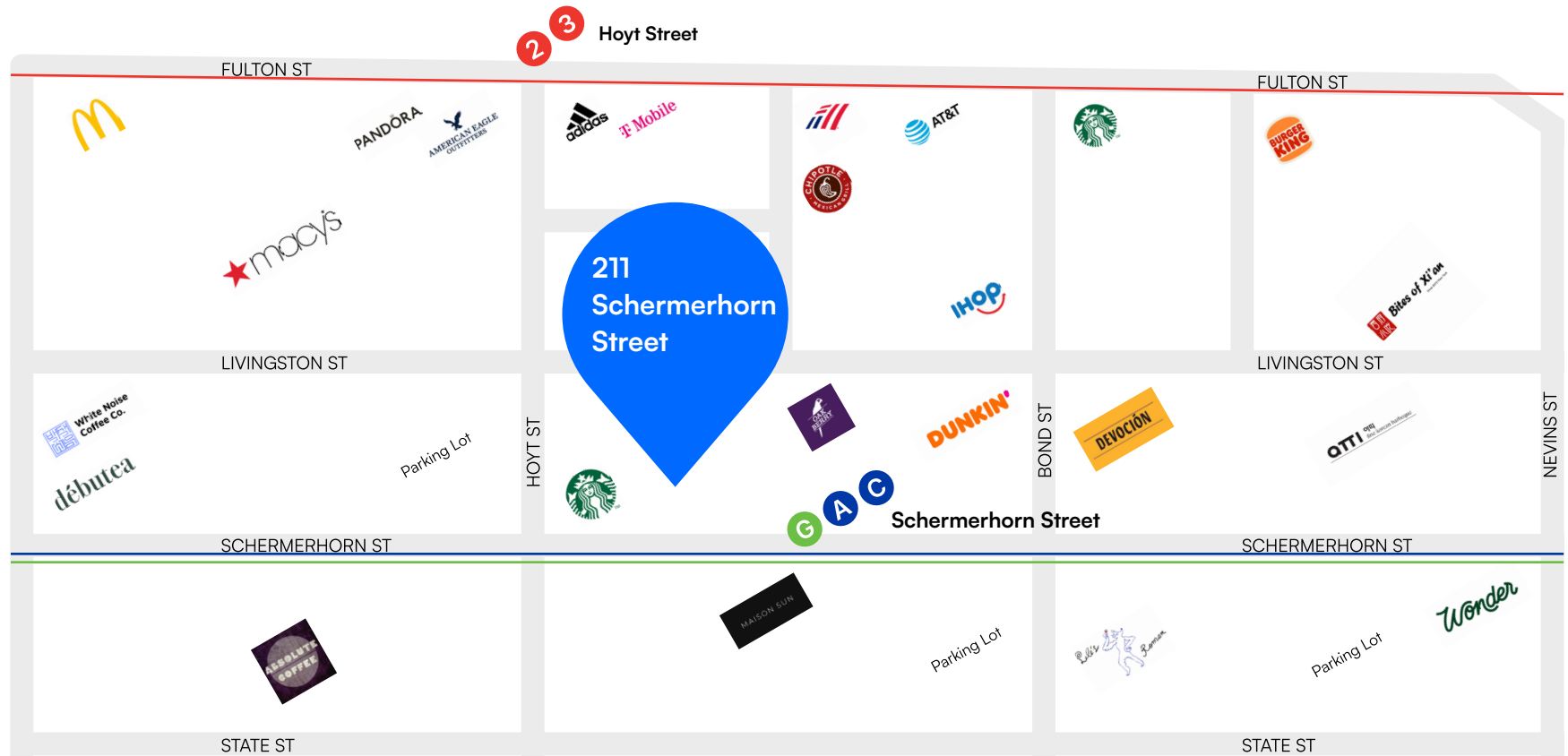
PROPERTY PHOTOS



PROPERTY PHOTOS



RETAIL MAP



211 SCHERMERHORN STREET, BROOKLYN, NY 11201

3,400 – 7,600 SF NEW DEVELOPMENT RETAIL SPACE WITH GLASS FRONTAGE

Between Hoyt Street & Bond Street

For Pricing Call: **212.433.3355**

SHLOMI BAGDADI
212.433.3355 x101
sb@tristatecr.com

LEO BEDA
212.433.3355 x103
leo.b@tristatecr.com

TSC.