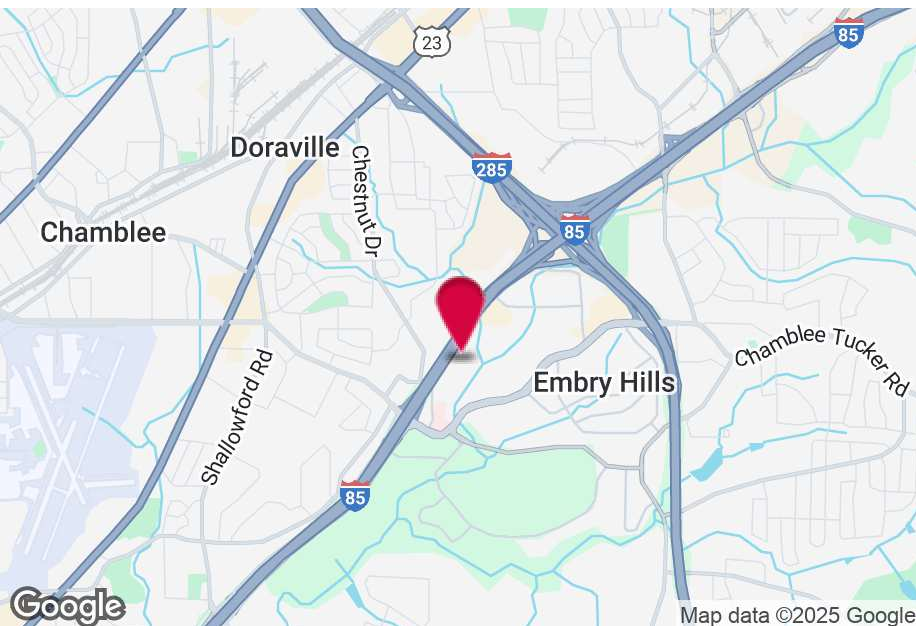


# FOR SALE

**3160 MARJAN DRIVE**

Atlanta, GA 30340

17,050+/- SF OFFICE / WAREHOUSE BUILDING



## PROPERTY HIGHLIGHTS

- 3,500+/- SF Office Space
- 8 Dock High Doors
- 2 Drive-In Doors
- 3 Phase Power
- 16' Clear Height

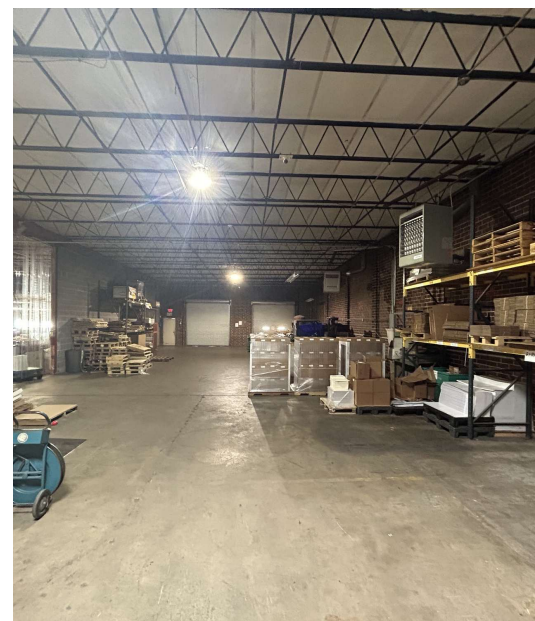
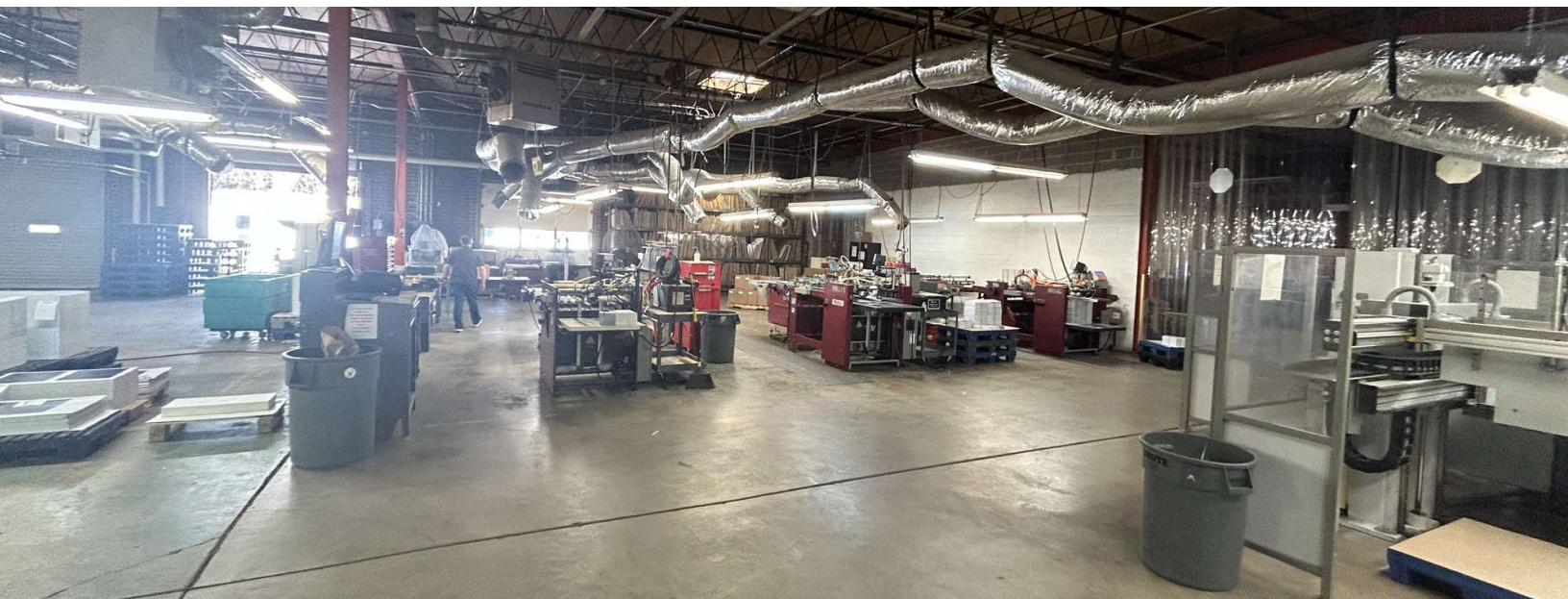
## BUILDING SUMMARY

Building Size	17,050 SF
Zoning	M

**Carson Hawks**  
Associate  
chawks@kingindustrial.com  
770.312.0267

**Clyde Purmort**  
Advisor  
cpurmort@kingindustrial.com  
941.323.0763

# ADDITIONAL PHOTOS

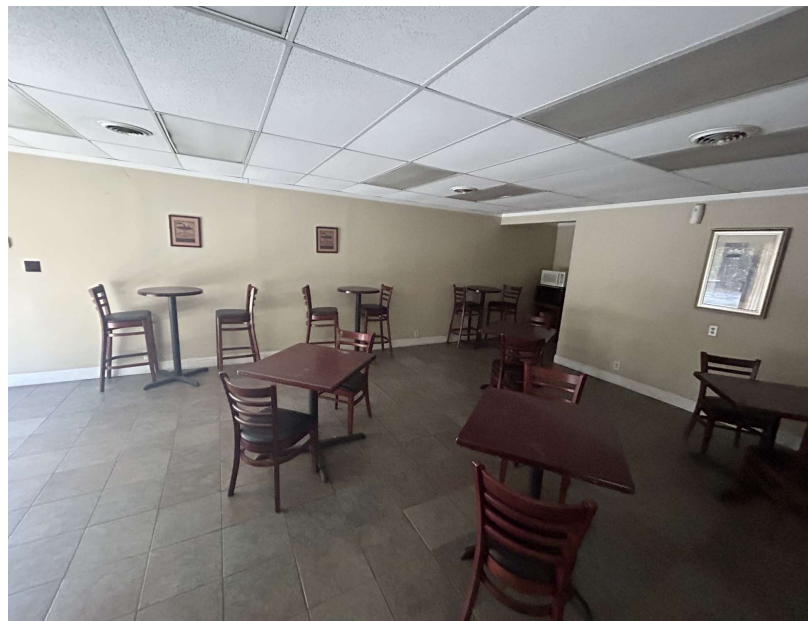


**Carson Hawks**  
Associate  
chawks@kingindustrial.com  
770.312.0267

**Clyde Purmort**  
Advisor  
cpurmort@kingindustrial.com  
941.323.0763

**King** Industrial Realty, Inc. **CORFAC** INTERNATIONAL  
Industrial • Commercial • Investment

# ADDITIONAL PHOTOS

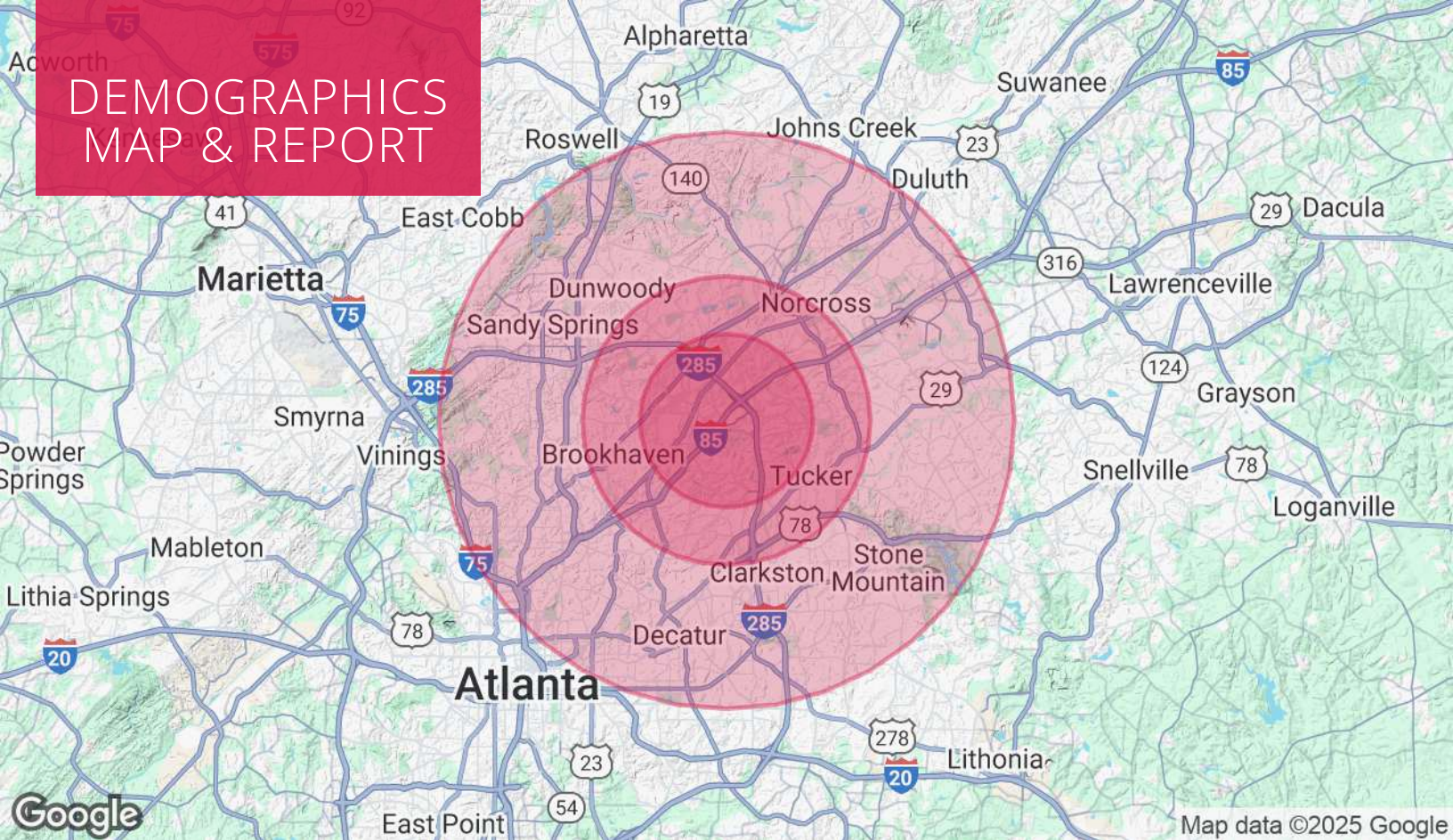


**Carson Hawks**  
Associate  
chawks@kingindustrial.com  
770.312.0267

**Clyde Purmort**  
Advisor  
cpurmort@kingindustrial.com  
941.323.0763

**King** Industrial Realty, Inc. **CORFAC** INTERNATIONAL  
Industrial • Commercial • Investment

# DEMOGRAPHICS MAP & REPORT



## POPULATION

	3 MILES	5 MILES	10 MILES
Total Population	102,343	287,617	990,960
Average Age	37	37	38
Average Age (Male)	36	36	38
Average Age (Female)	37	38	39

## HOUSEHOLDS & INCOME

	3 MILES	5 MILES	10 MILES
Total Households	41,025	115,325	409,648
# of Persons per HH	2.5	2.5	2.4
Average HH Income	\$111,669	\$124,852	\$132,934
Average House Value	\$451,001	\$510,781	\$564,036

Demographics data derived from AlphaMap

**Carson Hawks**

Associate  
chawks@kingindustrial.com  
770.312.0267

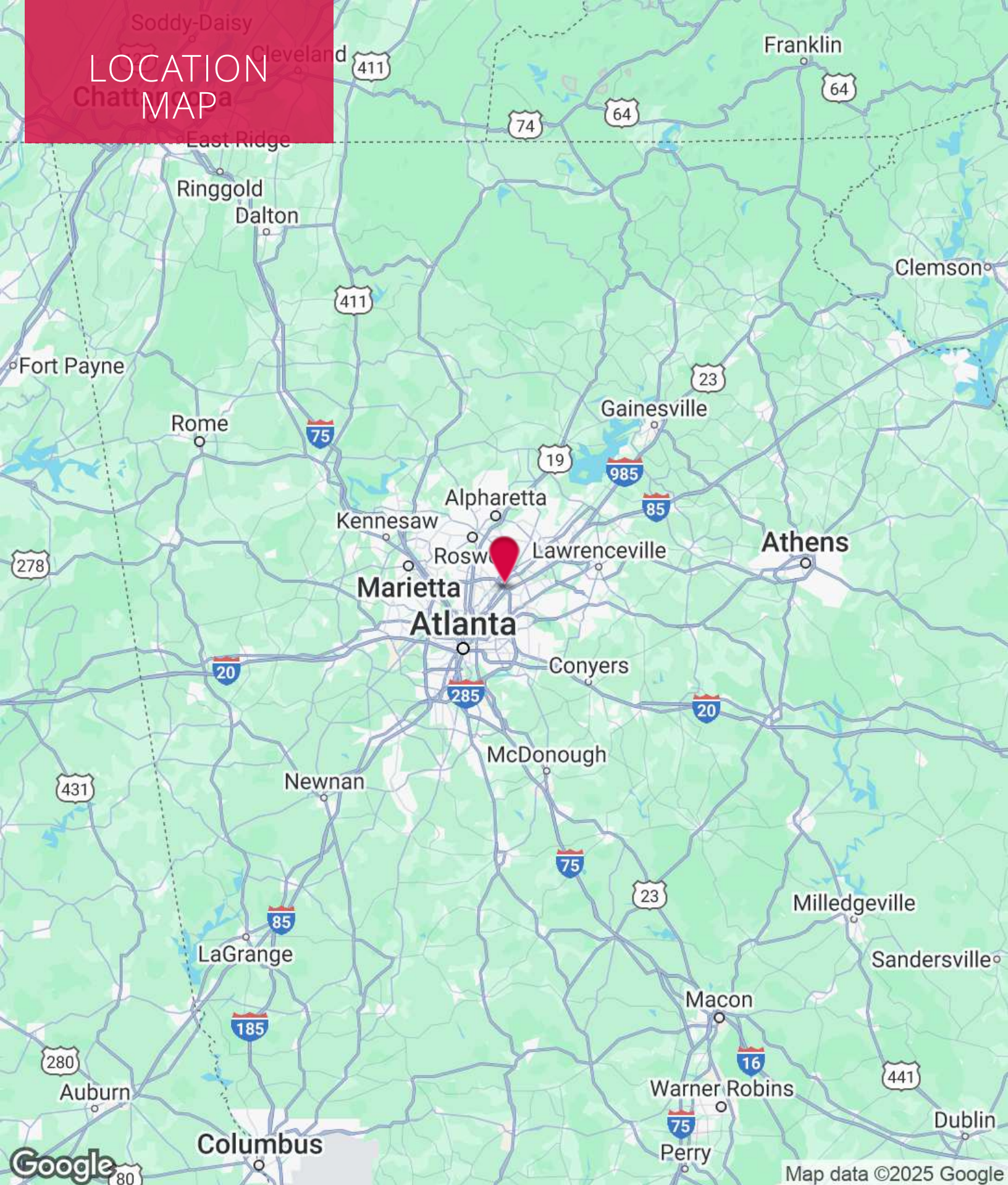
**Clyde Purmort**

Advisor  
cpurmort@kingindustrial.com  
941.323.0763



Industrial • Commercial • Investment

# LOCATION MAP



**Carson Hawks**  
Associate  
chawks@kingindustrial.com  
770.312.0267

**Clyde Purmort**  
Advisor  
cpurmort@kingindustrial.com  
941.323.0763

**King** Industrial  
Realty, Inc. **CORFAC**  
INTERNATIONAL  
Industrial • Commercial • Investment

EXCLUSIVELY LISTED BY:

**Carson Hawks**

Associate

[chawks@kingindustrial.com](mailto:chawks@kingindustrial.com)

770.312.0267

**Clyde Purmort**

Advisor

[cpurmort@kingindustrial.com](mailto:cpurmort@kingindustrial.com)

941.323.0763