

FANTASTIC RETAIL OPPORTUNITY!
PRIME HUMBOLDT PARK LOCATION

ARCADIA PLAZA
SWC OF NORTH & SPAULDING AVENUES
3301-3329 W. North Avenue, Chicago, Illinois



HIGH TRAFFIC/HIGH VISIBILITY CORNER

Arcadia Plaza is a newly renovated 21,500 square foot retail center situated at the southwest corner of North and Spaulding Avenues in the Humboldt Park neighborhood. High traffic location, excellent visibility and densely populated community provide the foundation for creating a successful retail or commercial operation.

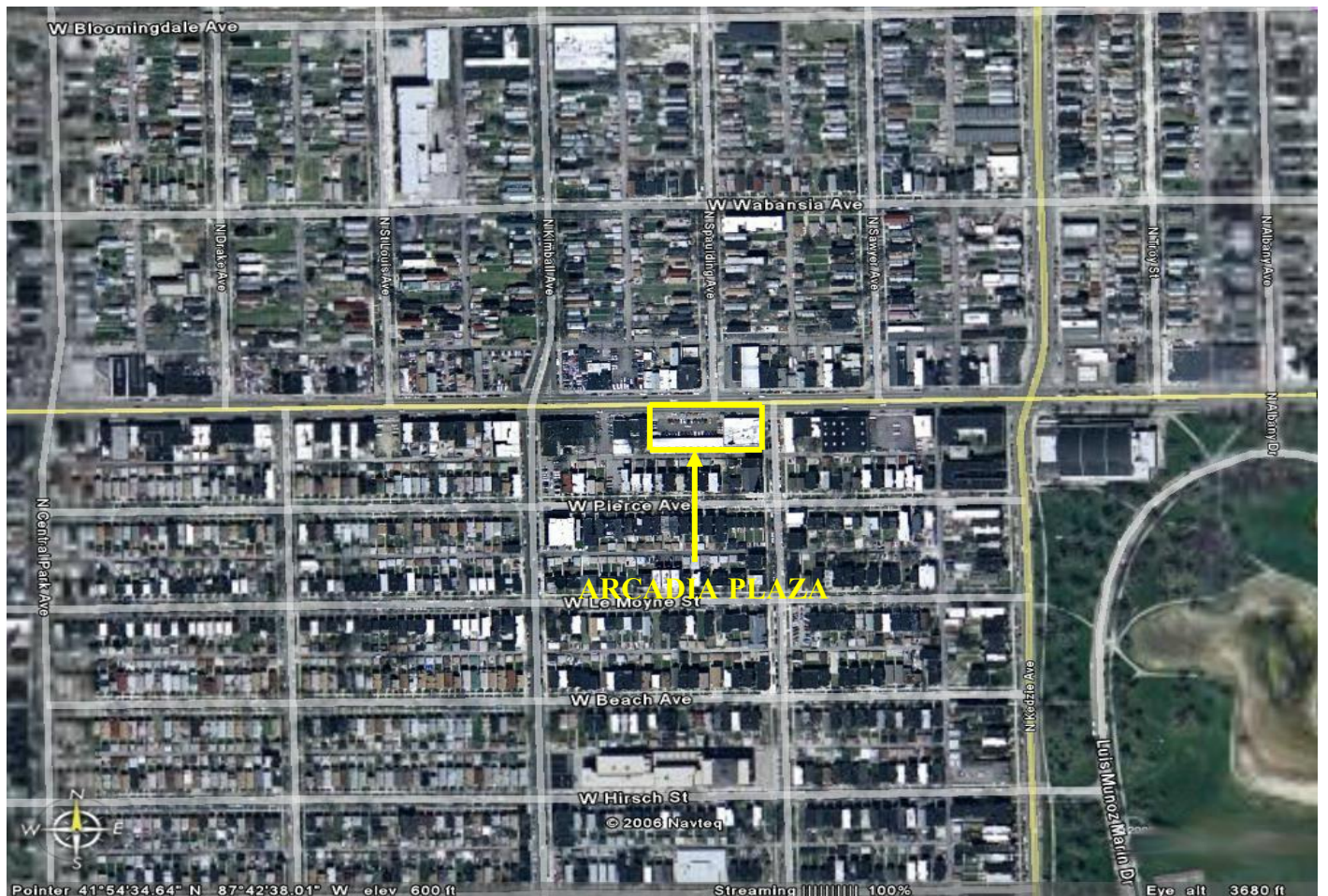
- ◆ Heavily traveled North Avenue (Route 64)
- ◆ Highly visible retail center with over 300 foot frontage
- ◆ Average Daily Traffic Count of 24,600 vehicles
- ◆ 1,000-3,000 square foot units available
- ◆ Ideal for any retail, medical or service business operation
- ◆ Pylon sign identification
- ◆ 35 car parking
- ◆ Anchored by Foremost Liquors and Food Mart. Other tenants include T-Mobile, Green Tree Dental, Magic Touch Nails, Subway, Check N Go, Tasty China, and Insurance Navy Brokers
- ◆ Demographics

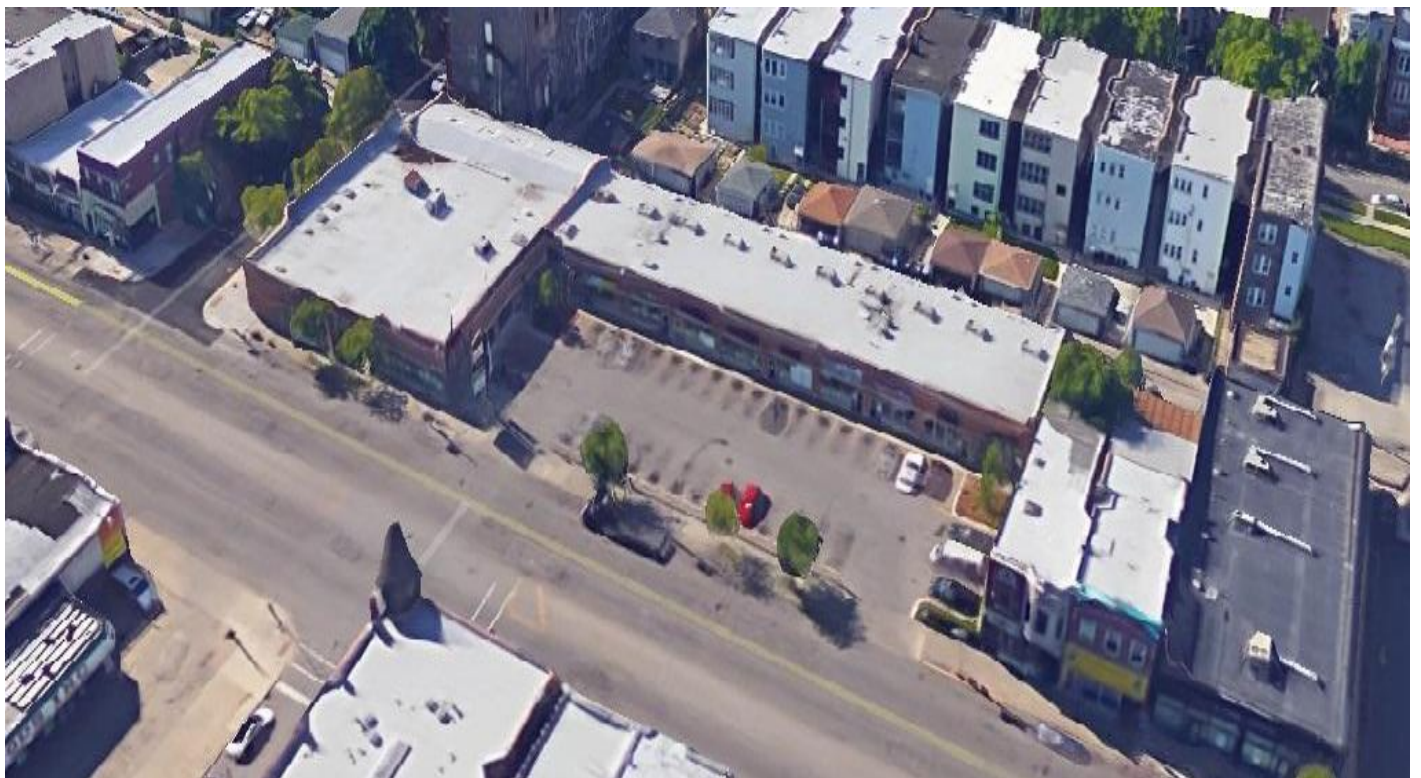
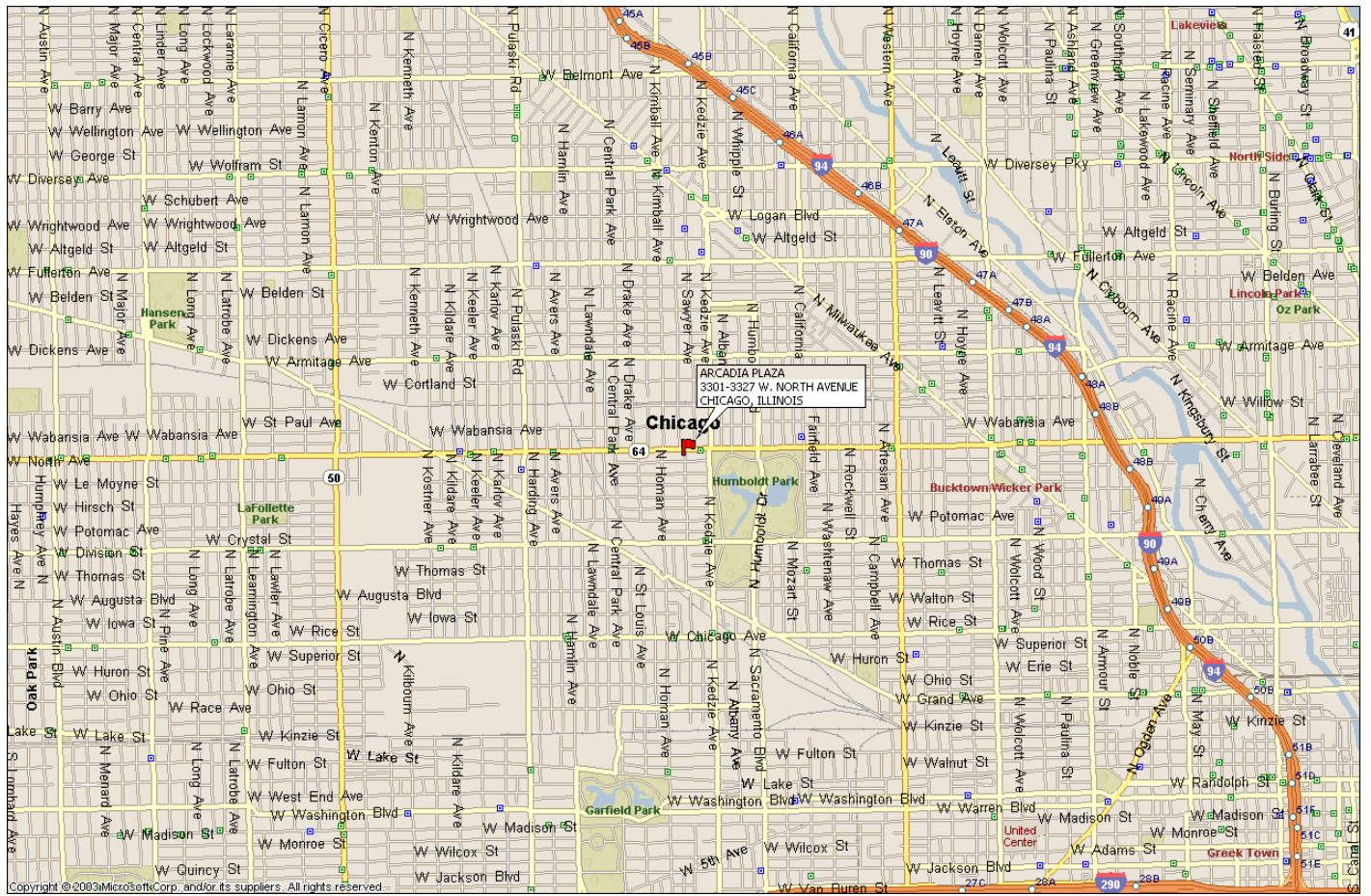
	<u>1 mile radius</u>	<u>3 mile radius</u>
2021 Total population estimate	67,583	464,224
2021 Average household income	\$59,029	\$74,727

For Additional Information:
STEFco COMMERCIAL REAL ESTATE
P.O. BOX 2233
Glenview, Illinois 60025

Contact:
STEFFAN A. ALIFERAKIS
Principal and Designated Managing Broker
847-800-5505
steffan@stefcocommercialrealestate.com

The above information is subject to inspection and verification by all parties relying on it. Stefco Commercial Real Estate, Stefmar, Inc., its affiliates and/or its associates assume no liability for its inaccuracy, errors or omissions. Price and terms subject to change and this offering may be withdrawn or modified without notice









**ARCADIA PLAZA
3301-3329 W. NORTH AVENUE
CHICAGO, ILLINOIS**

