



UNIQUE OPPORTUNITY FOR PREMIER AUTOMOTIVE SPACE

# South County Autoplex

APPROX. 62,855 SF AUTOMOTIVE REPAIR CENTER



# Property Overview

With a focus on Automotive Repair and Services, South County Autoplex is conveniently situated between the Chula Vista and Imperial Beach communities. Consisting of approximately 62,855 square feet, the auto repair/retail center spans five buildings.

This property features high visibility landmark signage along Broadway, just one block south of Palomar Street. The location is a short walk from numerous retail amenities including Walmart, Costco, Target, Starbucks and more.



## Size

Approx. 62,855 SF  
Automotive Repair Center

## Parking

190 Surface Spaces

## Access

Conveniently located to I-5 via  
Palomar Street

## Entry

Two points of entry on Broadway

## Traffic

ADT: 29,625 cars per day

## Visibility

Prominent location along a major  
thoroughfare

## Availability

### 1403 - Suite 110

Approx. 2,132 SF

### 1409 - Suite 108

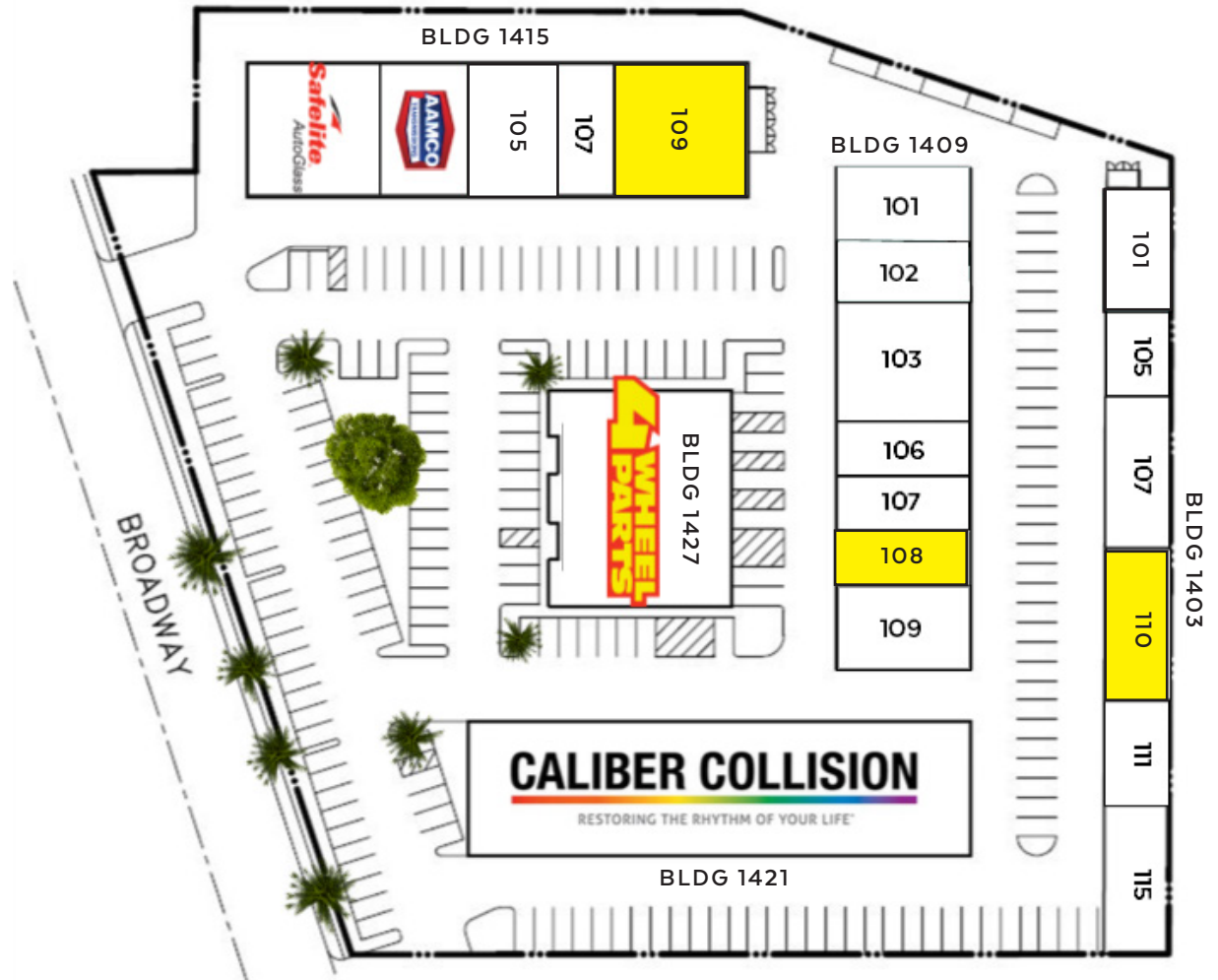
Approx. 1,410 SF

### 1415 - Suite 109

Approx. 3,612 SF

# Site Plan

BUILDING 1403	SUITE	SF
Mex Rent A Car	101	2,242
Southbay Differential	105	713
True Bar Automotive	107	2,132
AVAILABLE	110	2,132
Quick & Easy Auto Repair	111	1,424
Caliber Collision Body Works	115	2,338
BUILDING 1409		
The Taco Garage	101	2,192
Tony Calafato	102	1,410
Safelite Auto Glass	103	4,247
TK Smog & Auto Repair	106	1,415
TAP Worldwide	107	1,415
AVAILABLE	108	1,410
Checkered Automotive Solutions	109	2,290
BUILDING 1415		
Safelite Auto Glass	101	3,723
Aamco Transmission	103	2,813
CM Auto Parts	105	2,833
Pump It Up Audio	107	1,408
AVAILABLE	109	3,612
BUILDING 1421		
Caliber Collision Body Works	100	14,606
BUILDING 1427		
4Wheel Parts	104	8,500



# Availability 1403 | Suite 110

## Features - Approx. 2,132 SF

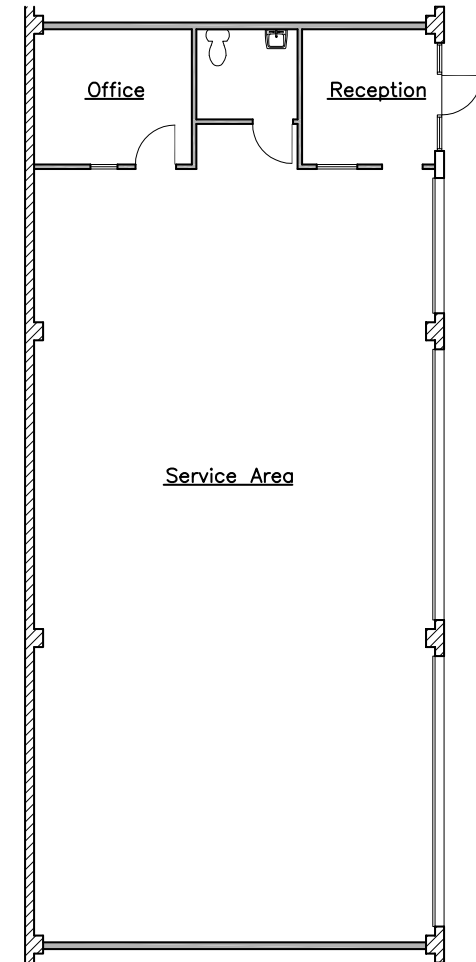
Service Area with up-to (5) Service Bays

Three (3) Grade Level Doors

Private Restroom

Private Office

Reception Area



# Availability 1409 | Suite 108

## Features - Approx. 1,410 SF

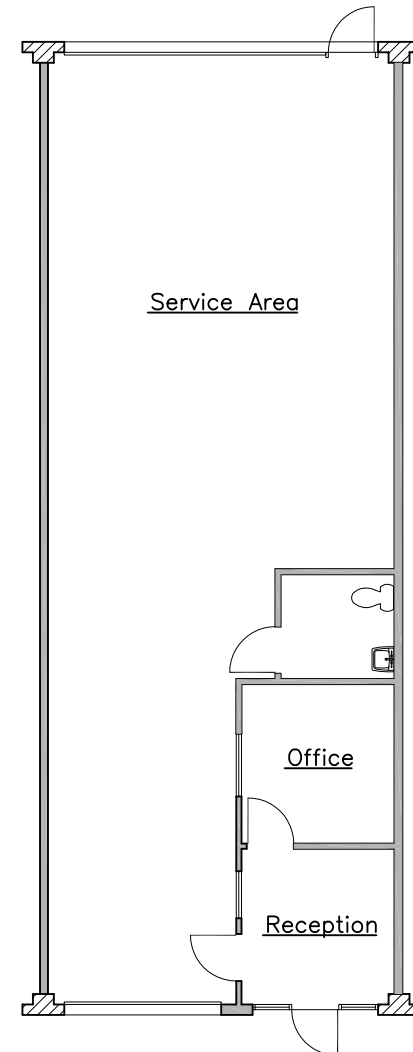
Service Area

Private Restroom

Private Office

Reception Area

Front and Rear Roll-up Door





# Availability 1415 | Suite 109

## Features - Approx. 3,612 SF

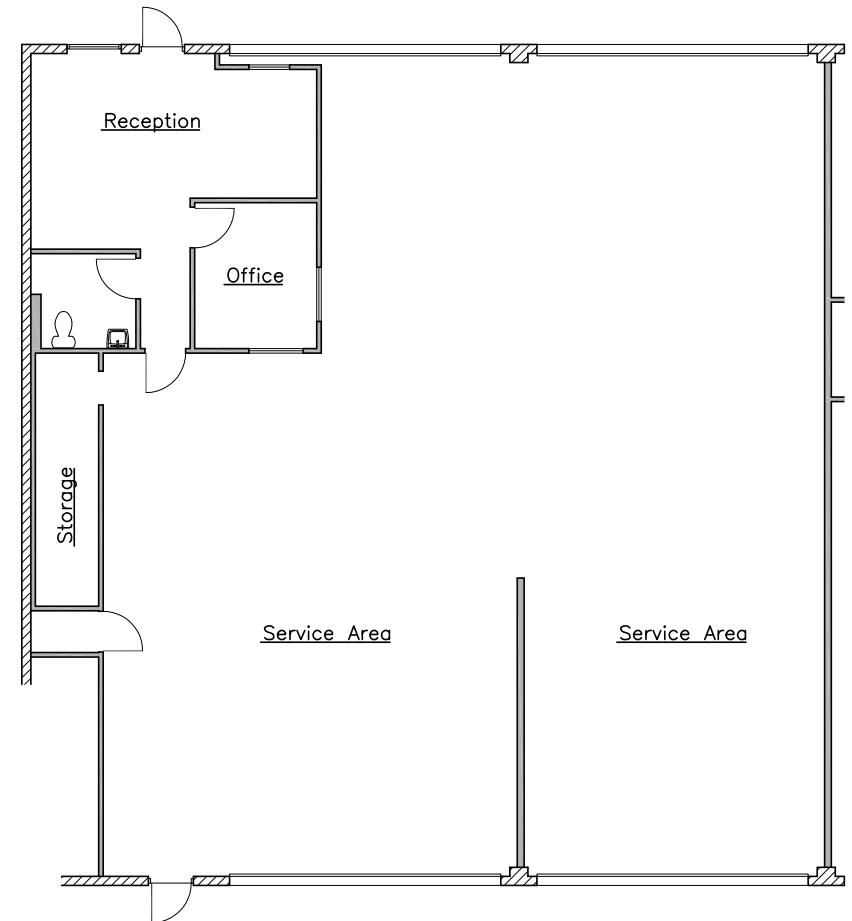
Service Area

Reception Area

Private Restrooms

Private Office

Front and Rear Roll-up Door



# Location Features

## HIGH VISIBILITY

Prominent street frontage and landmark signage along Broadway's retail corridor.

## PROXIMITY

Chula Vista Bayfront Master Plan (4.1 miles)

San Ysidro Port of Entry (6.5 miles)

Otay Mesa Port of Entry (10.3 miles)

Downtown San Diego (13.1 miles)

## FREEWAY

Less than one mile to/from I-5 via Palomar Street

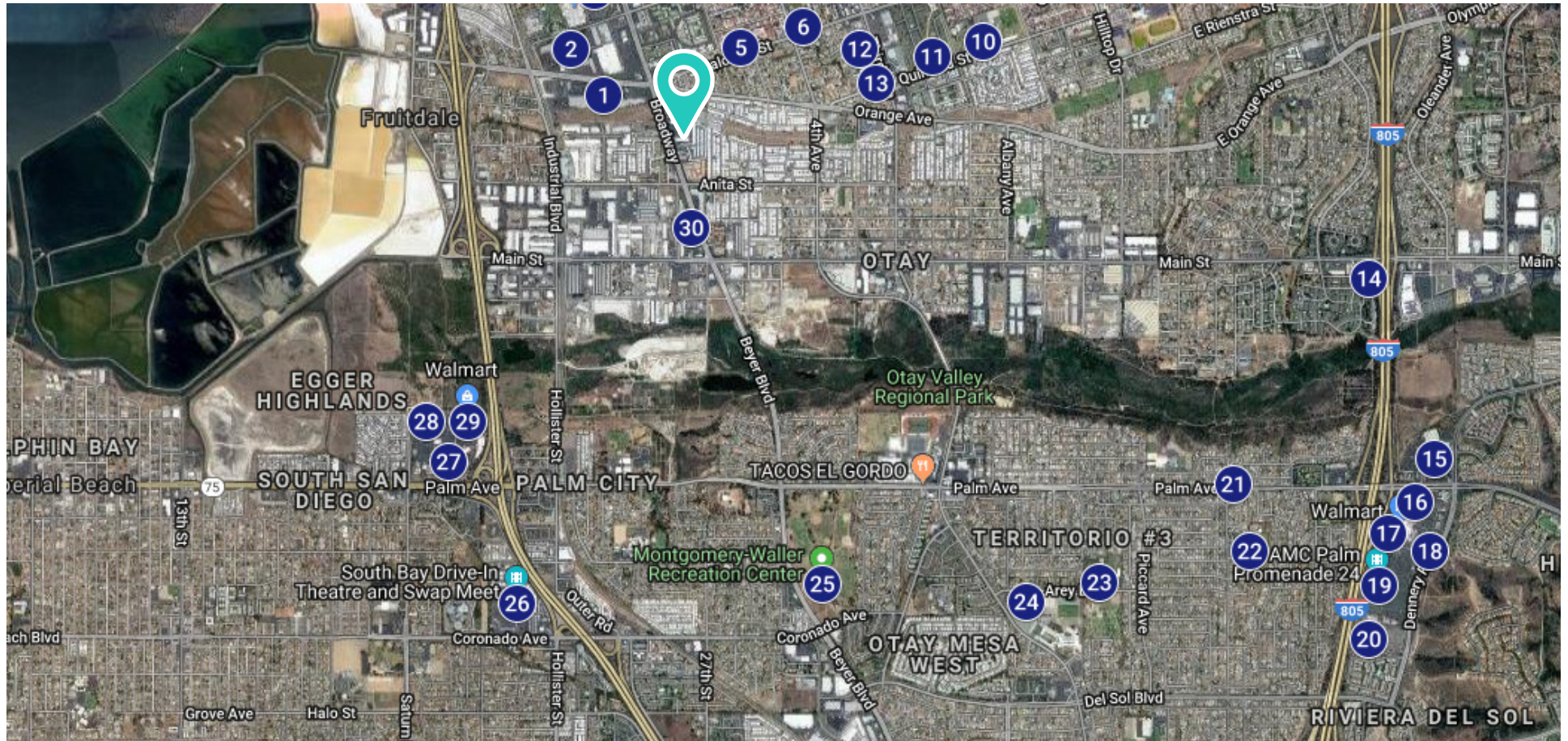
## SUBMARKET

Chula Vista is San Diego county's second largest city and the seventh largest city in the state of California.





# Location Details



- |                                 |                               |                                      |                                     |
|---------------------------------|-------------------------------|--------------------------------------|-------------------------------------|
| 1. Palomar Trolley Center       | 9. Palomar Apartments         | 17. Walmart                          | 25. Montgomery-Waller Rec Center    |
| 2. Palomar Commerce Center      | 10. Castle Park Middle School | 18. Palm Promenade Shopping Center   | 26. South Bay Drive-In Theatre      |
| 3. Broadway Plaza               | 11. Park Palomar Apartments   | 19. AMC Palm Promenade 24            | 27. Southland Plaza Shopping Center |
| 4. Costco Wholesale             | 12. Grocery Outlet            | 20. The Home Depot                   | 28. The Home Depot                  |
| 5. Palomar High School          | 13. CVS                       | 21. San Diego Fire-Rescue Dept.      | 29. Walmart                         |
| 6. Lauderbach Elementary School | 14. Best Western              | 22. Juarez Lincoln Elementary School | 30. 24 Hour Fitness                 |
| 7. USPS                         | 15. Kaiser Permanente         | 23. CVLCC High School                |                                     |
| 8. Oxford Shopping Center       | 16. Vons                      | 24. Border View Family YMCA          |                                     |



# Get in Touch.

## Nate White

Director  
DRE Lic. #02108142

OFFICE 619.8804650  
nwhite@intersectioncre.com

## Alec Spencer

Senior Associate  
DRE Lic. #02140776

MOBILE 858.354.0577  
aspencer@intersectioncre.com



**AAMCO**  
TOTAL CAR CARE



**AVAILABLE**

**SOUTH BAY  
DATSUN**

**BODY WORKS  
COLLISION**

**APOLLO  
TIRE**

**BELTRAN'S**

**VITAL CARR**

**CALIFORNIA TRANSMISSION**

**1403-1427**

## Disclosure

The information set forth herein has been received by us from sources we believe to be reliable, but we have made no independent investigation of the accuracy or completeness of the information and make no representation with respect thereto. The above is submitted to errors, prior sale or lease, change in status or withdrawal without notice.

DRE Lic #01971891



PHONE  
**619.239.1788**

ADDRESS  
**110 West A St, Suite 1125  
San Diego, CA 92101**

WEBSITE  
**www.intersectioncre.com**