

128

FURLONG INDUSTRIAL DR
SUITE F
KERNERSVILLE, NC

FLEX SPACE
FOR
LEASE



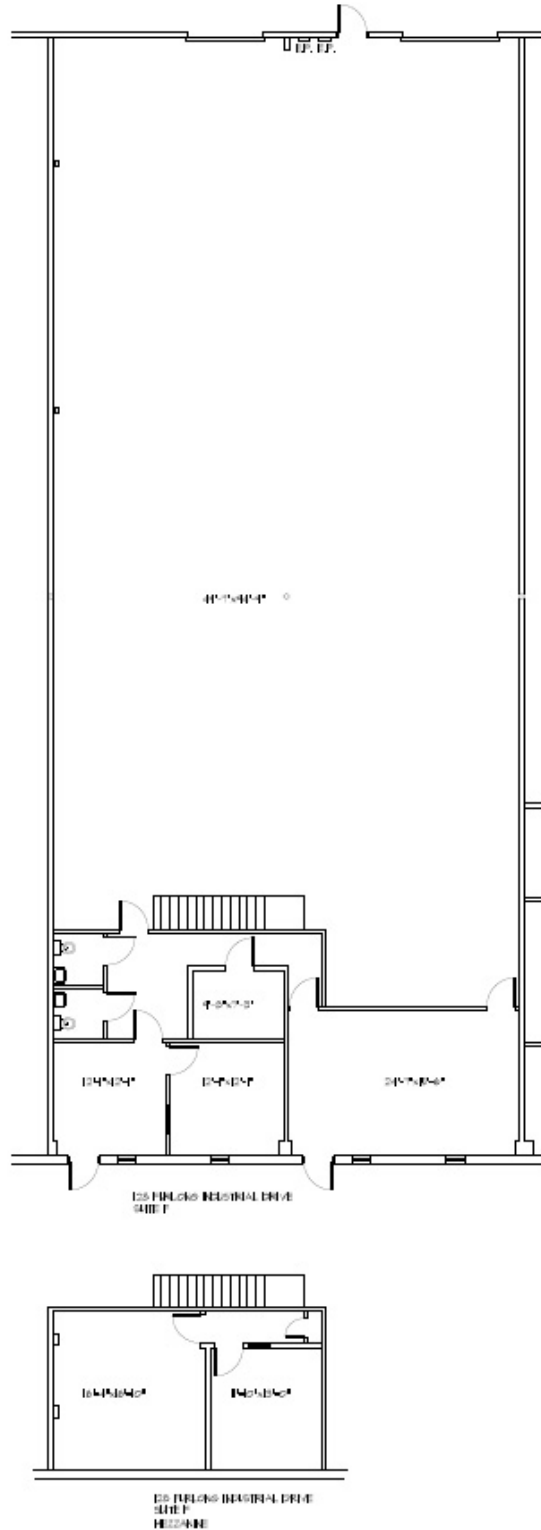
PROPERTY HIGHLIGHTS

- $\pm 6,000$ SF
- 850 SF of Office
- 400 SF of Mezzanine Office
- One Dock Height Door
- One Drive In Door
- 480v Power
- **\$10.00 PSF | NNN**

NAI Piedmont Triad
Commercial Real Estate Services, World Wide

BEN STURGILL
BROKER
336.848.3046
bsturgill@naipt.com

348 N Elm Street | Greensboro, NC 27401 | naipt.com



The information contained herein is deemed reliable but is not guaranteed. NAI Piedmont Triad makes no warranties or representations regarding the accuracy, completeness, or reliability of the information. All parties are encouraged to independently verify all details, including but not limited to property condition, terms, and financial projections. Prices, terms, and availability are subject to change without notice.

BEN STURGILL
BROKER
336.848.3046
bsturgill@naipt.com

348 N Elm Street | Greensboro, NC 27401 | naipt.com