

FOR RENT

Northampton / N. Military Hwy / Office / Airport Industrial Park

5301 E. Princess Anne Rd., Norfolk, VA 23502

27,488 sq. ft. HVAC throughout Column FREE

12' x 12' roll-up door

17' 6" clear height

Zoned: C-C

165 Parking Spaces

2000 amps: 1200 amp 120/208 volt 3 phase + 800 amp 277/480 volt 3 phase

Pylon Sign

www.Loopnet.com/Listing/5301-E-Princess-Anne-Rd-Norfolk-VA/34080161/



JCF 757-623-1062 ext. 213 (tel) / Attn: Lawrence / Lakebarb4@aol.com

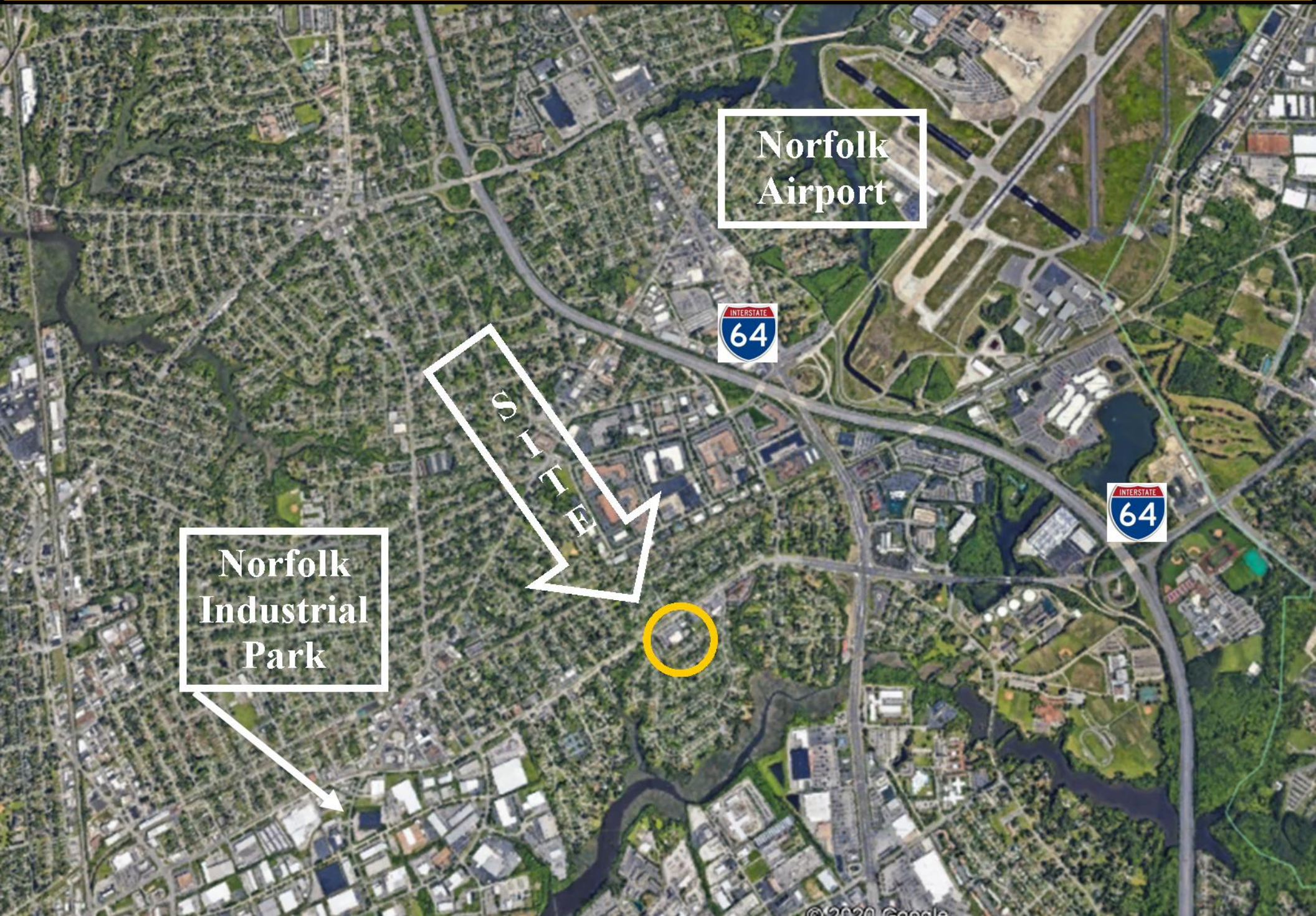


5301 E. Princess Anne Rd., Norfolk, VA



Illuminated pylon sign with street frontage

5301 E. Princess Anne Rd., Norfolk, VA 23502



Norfolk
Airport

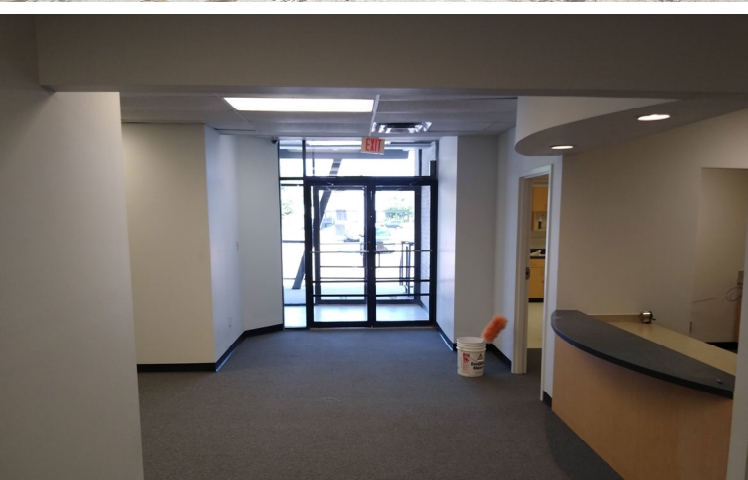


Norfolk
Industrial
Park



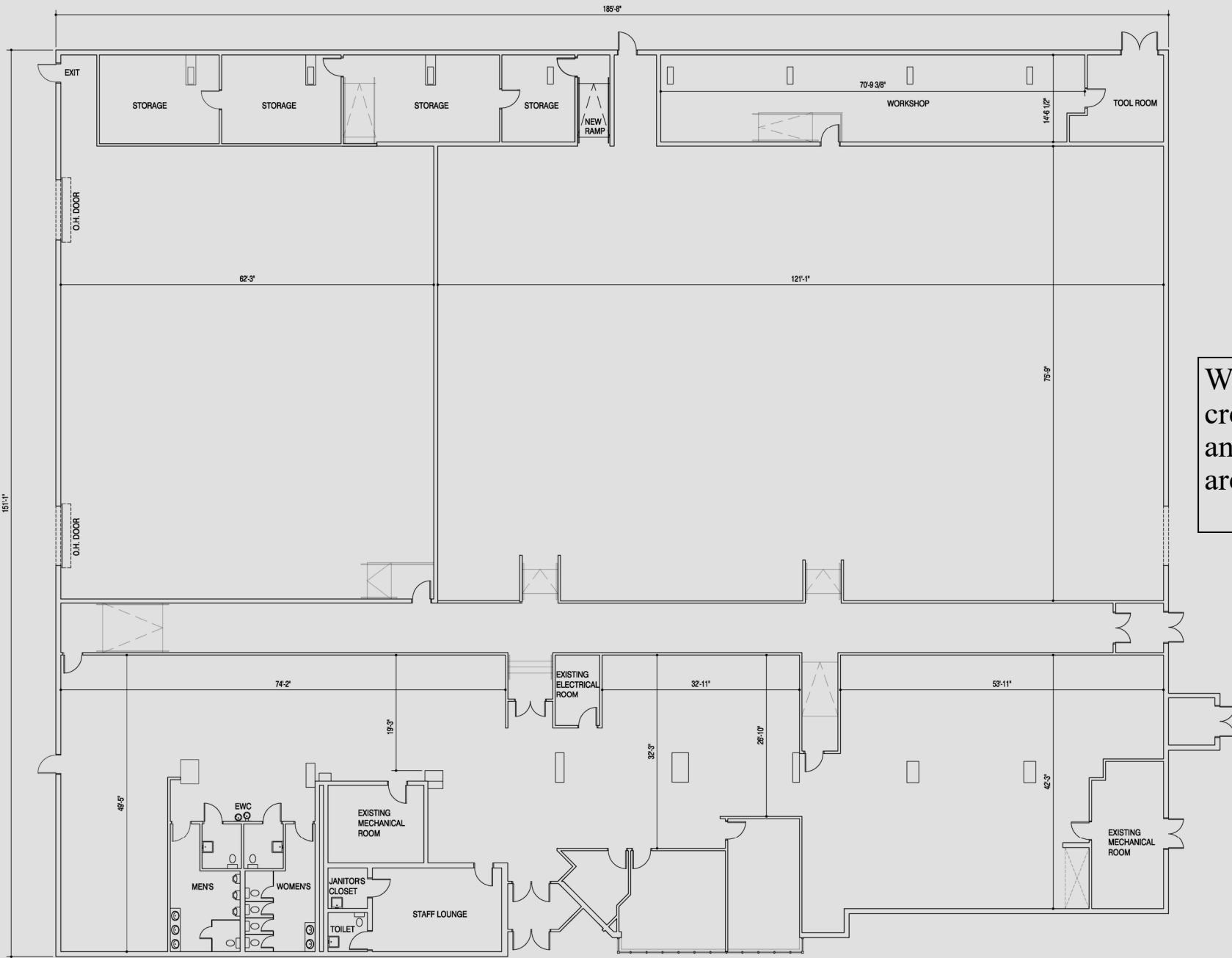


Column Free Assembly or Workstations



Offices / Classrooms
Storage
12' overhead delivery
door





Wide open spaces created if offices and classrooms are removed.



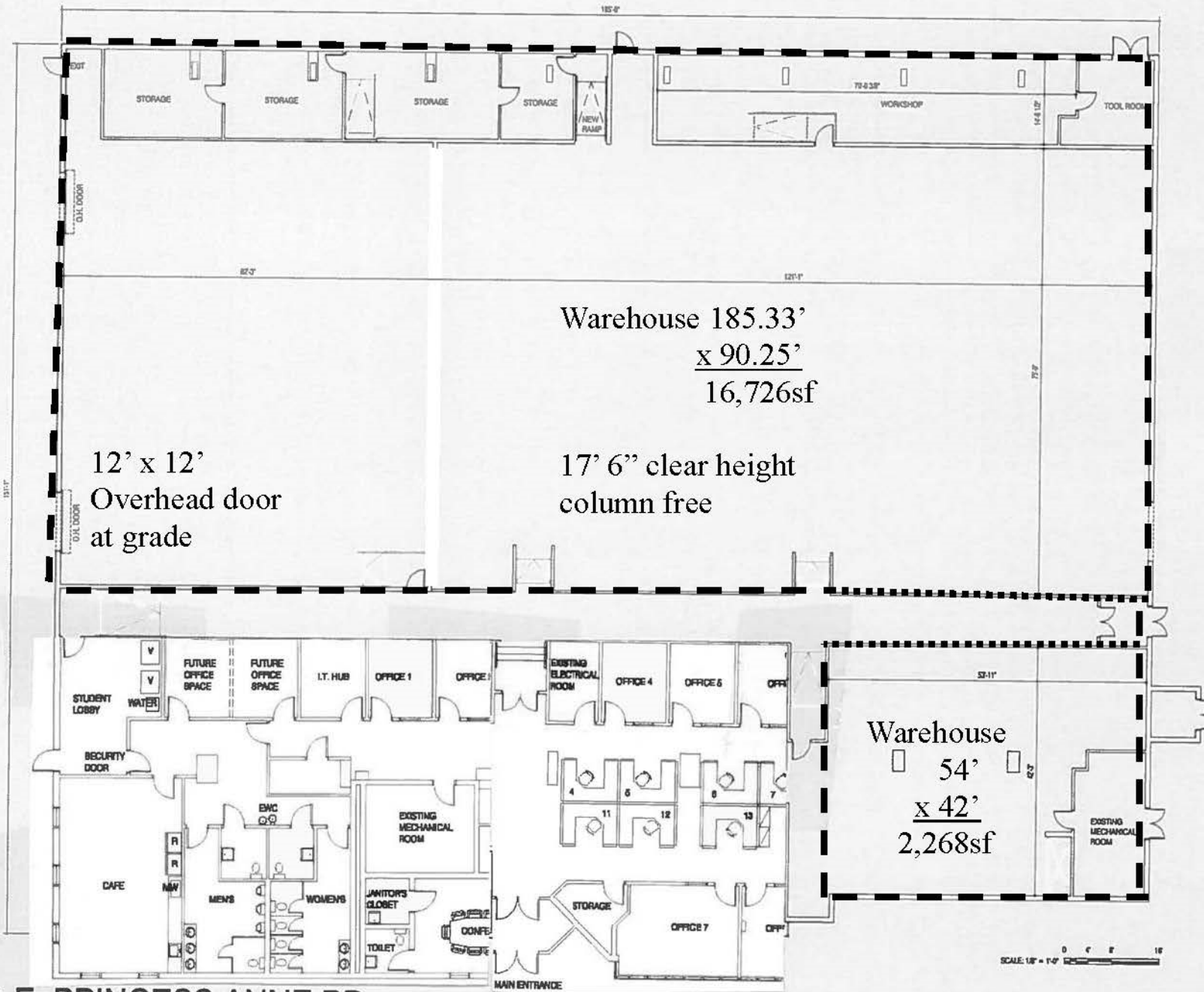
SCALE: 1/8" = 1'-0"

5301 E. PRINCESS ANNE RD.
 NORFOLK, VIRGINIA 23502

ALL DIMENSIONS SHOWN ARE APPROXIMATE AND SUBJECT TO FIELD VERIFICATION

MARCH 5, 2020





5301 E. PRINCESS ANNE RD.
 NORFOLK, VIRGINIA 23502

ALL DIMENSIONS SHOWN ARE APPROXIMATE AND SUBJECT TO FIELD VERIFICATION

MARCH 5, 2020