

FOR LEASE | PROFESSIONAL OFFICE/MEDICAL SPACE

ALAMO CREEK PROFESSIONAL CENTER

301 ALAMO DR. AND 595 BUCK AVE., VACAVILLE, CALIFORNIA



PROFESSIONAL / MEDICAL / DENTAL OFFICE SPACE
LOCATED AT INTERSECTION OF BUCK AVENUE AND ALAMO DRIVE

SPACE 301 A-1; APPROX 750 SF; PROF. OFFICE OR MEDICAL/DENTAL
301-E; APPROX 1,881 SF; DENTAL/MEDICAL (ORAL SURGURY)
595-A; APPROX 1,560 SF; PROFESSIONAL-MEDICAL OFFICE
595-B; APPROX 780 SF; PROF. OFFICE OR MEDICAL

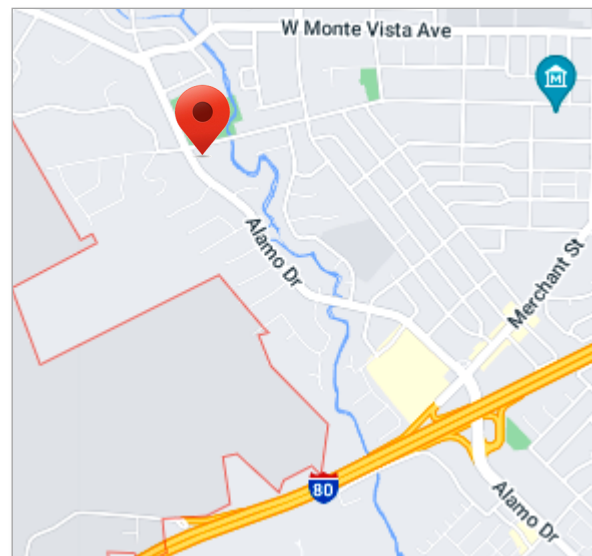
BUILDING GLA APPROX.. 13,971 R.S.F.

RENTAL RATE \$2.20—\$2.35 PER SF

YEAR BUILT 1975

BUILD-OUT SEE ATTACHED SPACE PLANS

- AMENITIES**
- AMPLE ON-SITE PARKING
 - EXCELLENT STREET VISIBILITY
 - LOCATED IN NORTH VACAVILLE; 0.5 MI. TO I-80 FWY
 - CURRENT TENANTS INCLUDE MEDICAL, DENTAL AND GENERAL OFFICE USERS ALIKE.
 - MOVE-IN READY.

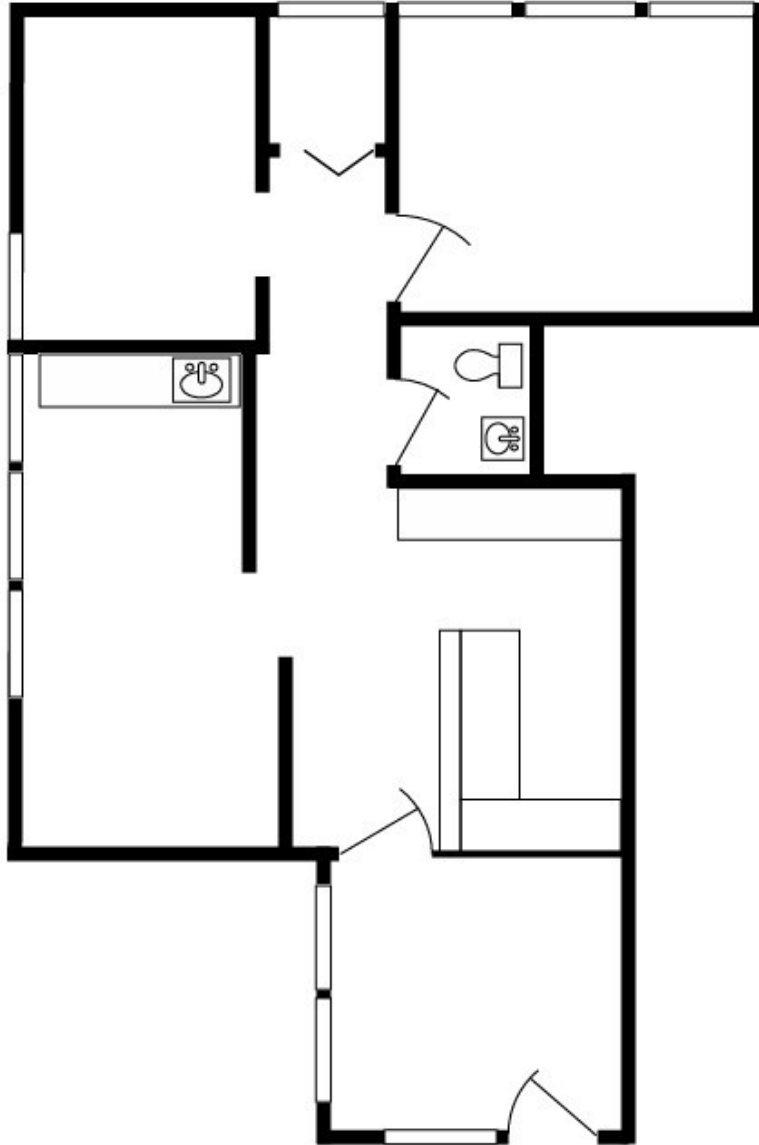


The information provided herein has been obtained from sources deemed reliable. Summit Properties does not guaranty its accuracy.

CONTACT:

Mary Ann Rollison
maryann@summitprops.com
707-479-0465
DRE #01055428

EXHIBIT A
Space Plan



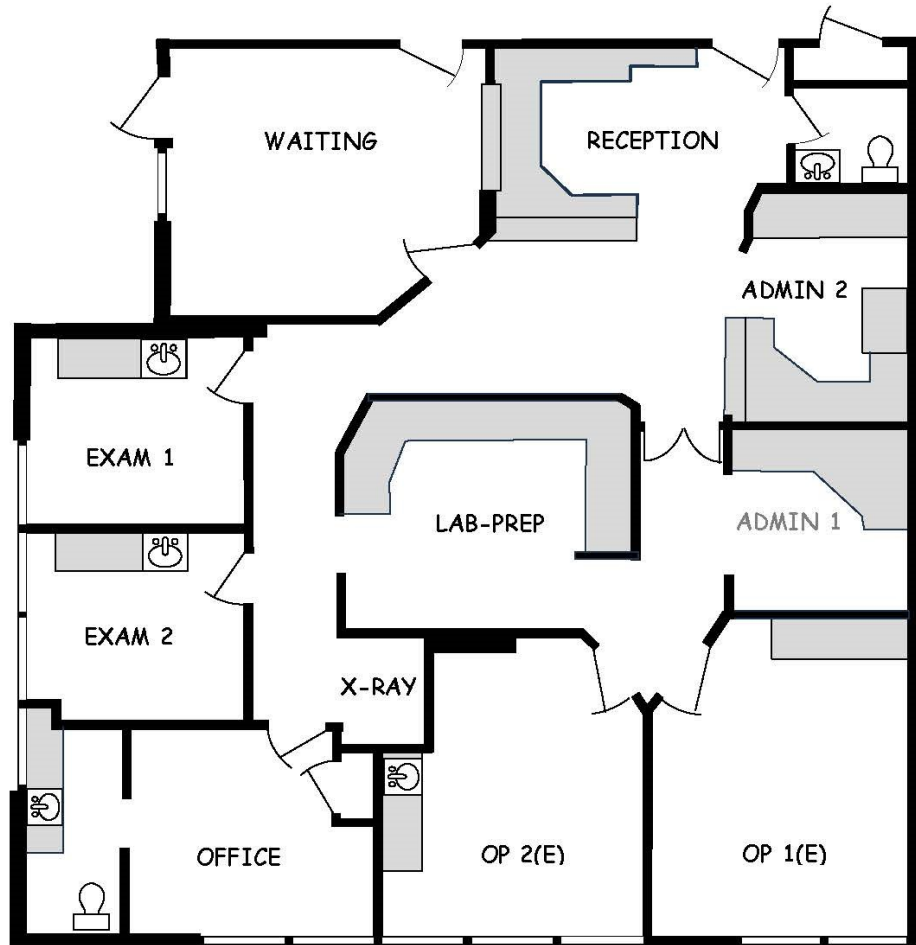
Mary Ann Rollison
707-479-0465
marollison@sbcglobal.net
DRE No. 01055428

301 ALAMO DRIVE, SUITE A-1

Vacaville, CA 95688
Approx 750 SF
(Not to Scale)

SPACE PLAN

301—E



Mary Ann Rollison
707-479-0465
marollison@sbcglobal.net
Lic. No. 01055428

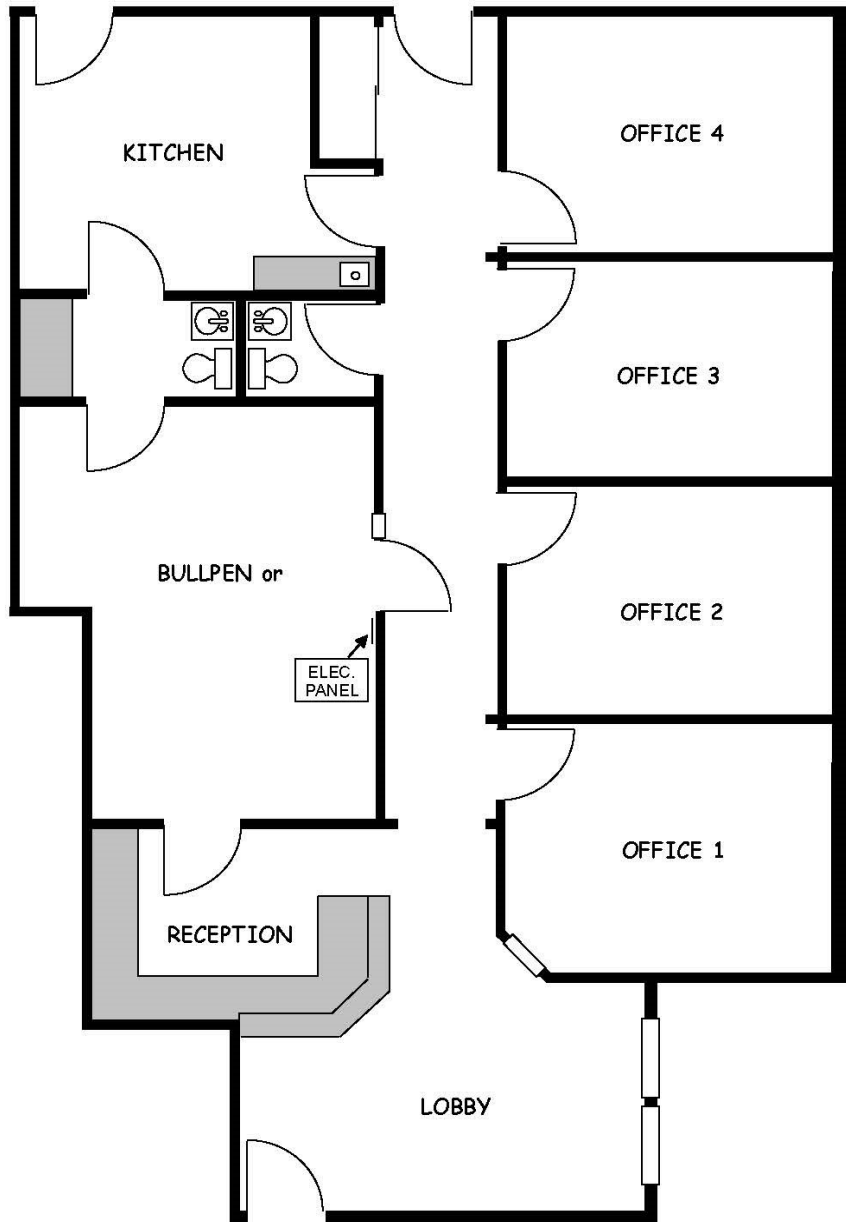
301 ALAMO DRIVE, SUITES E

Vacaville, CA 95688

APPROX. 1,881 SF

SPACE PLAN

595 -A BUCK AVE.

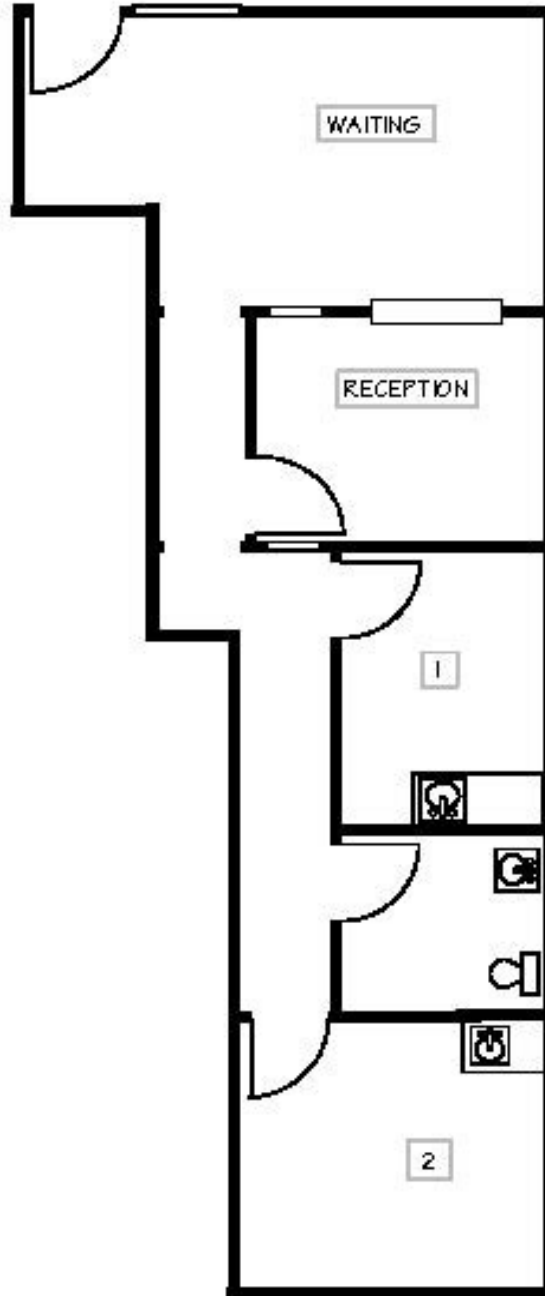


Mary Ann Rollison
707-479-0465
marollison@sbcglobal.net
DRE#01055428

595 BUCK AVE. SUITE A
Vacaville, CA 95688

Approx 1,560 SF

SPACE PLAN



Mary Ann Rollison
707-479-0465
marollison@sbcglobal.net
Lic. No. 01055428

ALAMO CREEK
PROFESSIONAL CENTER
595 Buck Ave., Suite B
Approx 780 SF