



Specifications

*Classic Car Dealership with Office,
Showroom, Storage Space for Vehicles*

±10,082 SF (2 Floors, Excluding Cellar)
TOTAL BUILDING SIZE - 2 BUILDINGS

±1.51 AC (Block 23, Lot 3)
TOTAL ACREAGE

12' – 14' Clear
CEILING HEIGHTS

185' Along Main Street
FRONTAGE

VN, Village Neighborhood
ZONING

Mixed-Use, Retail, Service and Repair,
Personal Service, Other Various
Commercial Uses
PERMITTED USES

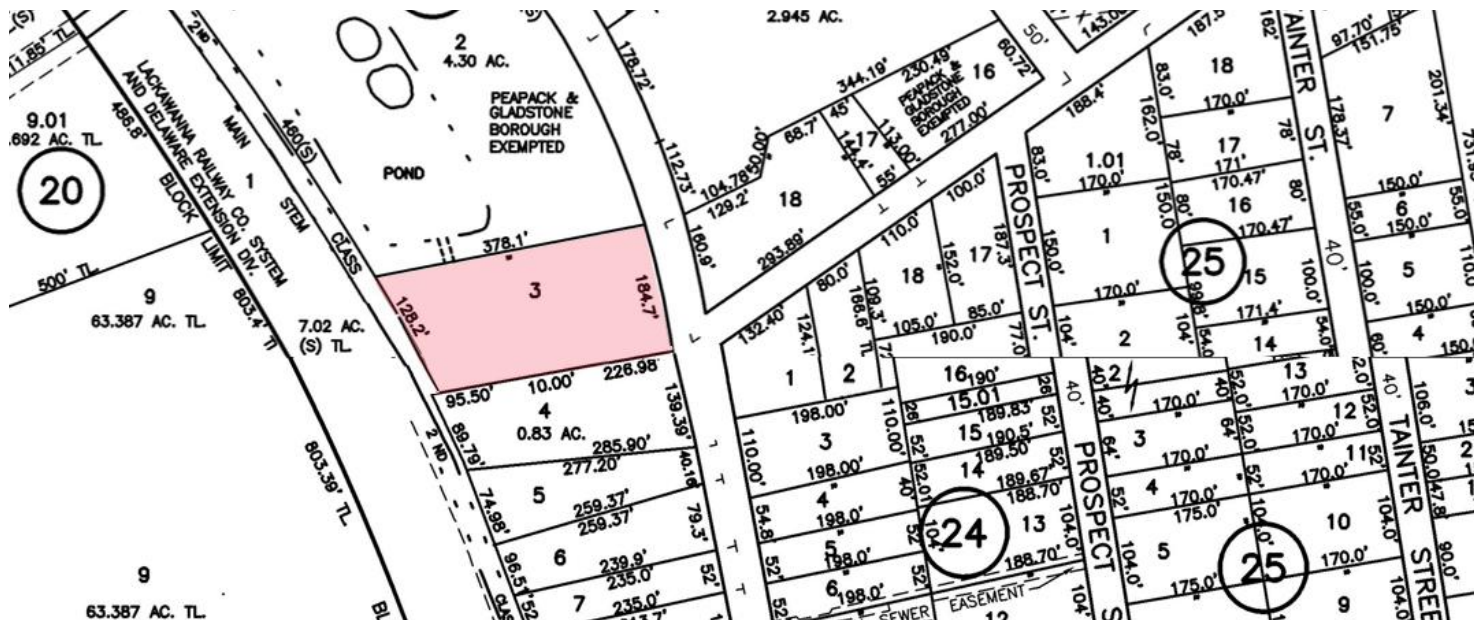
\$43,187.10
TAXES (2025)

\$3,300,000
SALE PRICE

For additional property information or to arrange an inspection, please contact the exclusive brokers:

Jason M. Crimmins, CCIM, SIOR, *President*, 973.379.6644 x 122, jmcrimmins@blauberg.com
 Alessandro (Alex) Conte, CCIM, SIOR, *Executive Vice President*, 973.379.6644 x 131, aconte@blauberg.com
 Peter J. Murano, Jr., *Managing Executive Director*, 973.379.6644 x 114, pjmurano@blauberg.com
 Jack Schlenger, *Associate*, 973.379.6644 x 239, jack@blauberg.com

FOR SALE OR LEASE | 163-165 MAIN STREET | PEAPACK-GLADSTONE, NJ,



For additional property information or to arrange an inspection, please contact the exclusive brokers:

Jason M. Crimmins, CCIM, SIOR, *President*, 973.379.6644 x 122, jmcrimmins@blauberg.com
Alessandro (Alex) Conte, CCIM, SIOR, *Executive Vice President*, 973.379.6644 x 131, aconte@blauberg.com
Peter J. Murano, Jr., *Managing Executive Director*, 973.379.6644 x 114, pjmurano@blauberg.com
Jack Schlenger, *Associate*, 973.379.6644 x 239, jack@blauberg.com

The information contained herein has been obtained from sources considered to be reliable, but no guarantee of its accuracy is made by this company. In addition, no representation is made respecting zoning, condition of title, dimensions, or any matters of a legal or environmental nature. Such matters should be referred to legal counsel for determination. Terms and conditions are subject to change without prior notice. Subject to errors and omissions.



FOR SALE OR LEASE | 163-165 MAIN STREET | PEAPACK-GLADSTONE, NJ,
First Floor Showroom Area



For additional property information or to arrange an inspection, please contact the exclusive brokers:

Jason M. Crimmins, CCIM, SIOR, *President*, 973.379.6644 x 122, jmccrimmins@blauberg.com
Alessandro (Alex) Conte, CCIM, SIOR, *Executive Vice President*, 973.379.6644 x 131, aconte@blauberg.com
Peter J. Murano, Jr., *Managing Executive Director*, 973.379.6644 x 114, pjmurano@blauberg.com
Jack Schlenger, *Associate*, 973.379.6644 x 239, jack@blauberg.com

The information contained herein has been obtained from sources considered to be reliable, but no guarantee of its accuracy is made by this company. In addition, no representation is made respecting zoning, condition of title, dimensions, or any matters of a legal or environmental nature. Such matters should be referred to legal counsel for determination. Terms and conditions are subject to change without prior notice. Subject to errors and omissions.

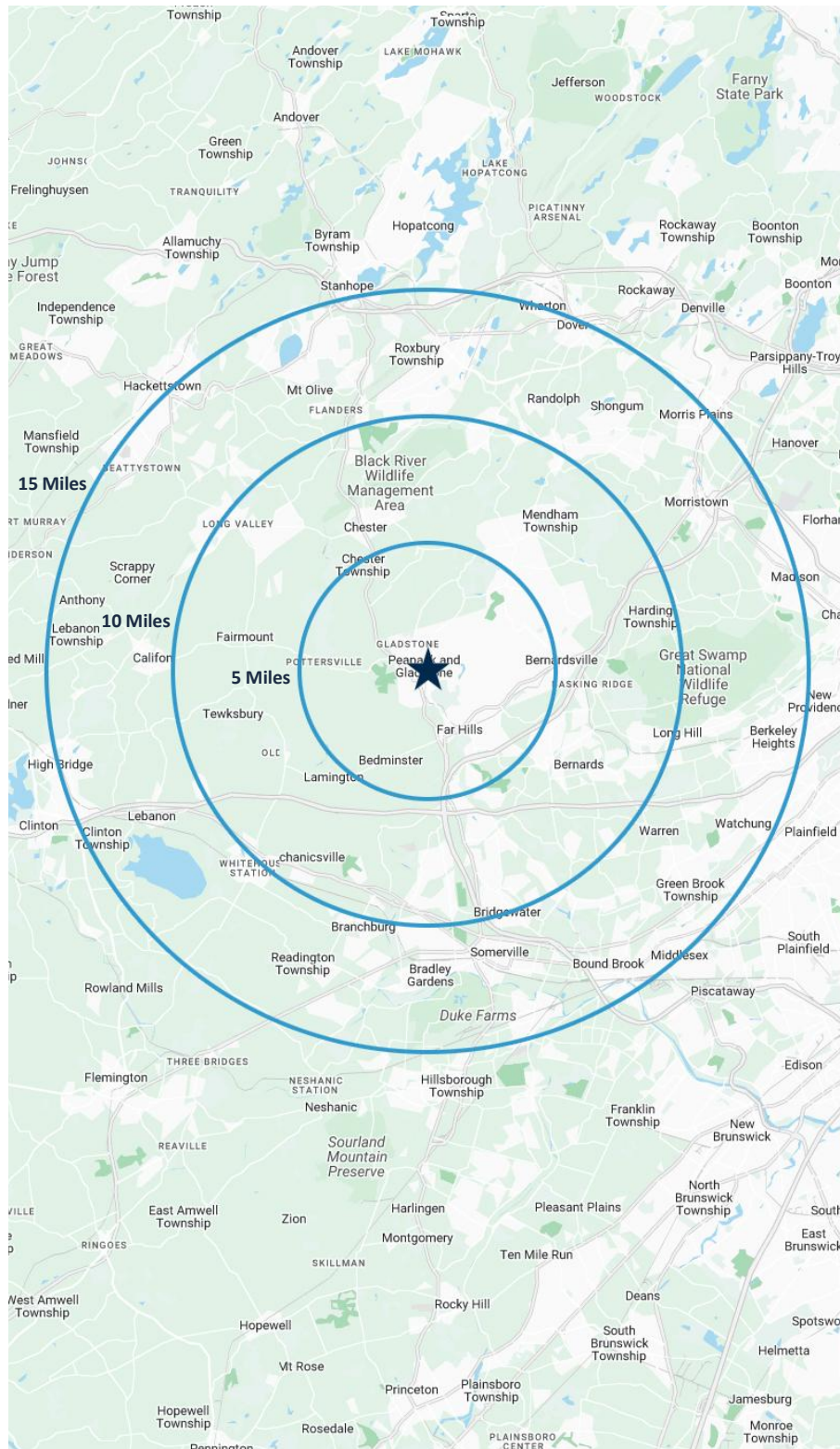
FOR SALE OR LEASE | 163-165 MAIN STREET | PEAPACK-GLADSTONE, NJ,
Ground Floor Storage Space



For additional property information or to arrange an inspection, please contact the exclusive brokers:

Jason M. Crimmins, CCIM, SIOR, *President*, 973.379.6644 x 122, jmcrimmins@blauberg.com
Alessandro (Alex) Conte, CCIM, SIOR, *Executive Vice President*, 973.379.6644 x 131, aconte@blauberg.com
Peter J. Murano, Jr., *Managing Executive Director*, 973.379.6644 x 114, pjmurano@blauberg.com
Jack Schlenger, *Associate*, 973.379.6644 x 239, jack@blauberg.com

The information contained herein has been obtained from sources considered to be reliable, but no guarantee of its accuracy is made by this company. In addition, no representation is made respecting zoning, condition of title, dimensions, or any matters of a legal or environmental nature. Such matters should be referred to legal counsel for determination. Terms and conditions are subject to change without prior notice. Subject to errors and omissions.



5 MILES

- Total Population: 32,590
- Households: 12,576
- Median Household Income: \$195,155
- Average Household Size: 2.6
- Transportation to Work: 17,488
- Labor Force: 26,937

10 MILES

- Total Population: 191,155
- Households: 70,235
- Median Household Income: \$195,301
- Average Household Size: 2.7
- Transportation to Work: 101,720
- Labor Force: 157,072

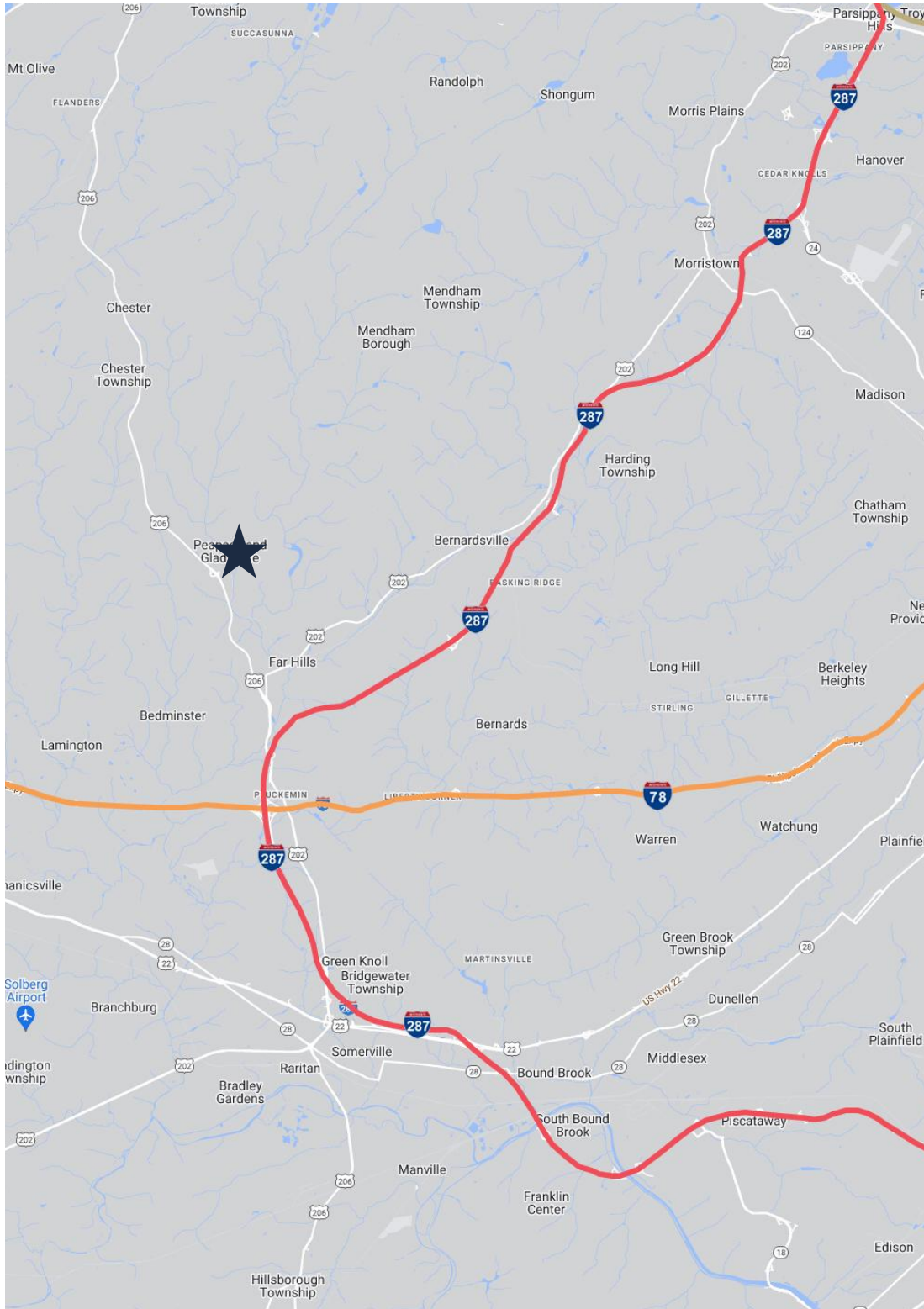
15 MILES

- Total Population: 814,685
- Households: 298,071
- Median Household Income: \$153,959
- Average Household Size: 2.7
- Transportation to Work: 437,275
- Labor Force: 664,494

For additional property information or to arrange an inspection, please contact the exclusive brokers:

Jason M. Crimmins, CCIM, SIOR, *President*, 973.379.6644 x 122, jmcrimmins@blauberg.com
Alessandro (Alex) Conte, CCIM, SIOR, *Executive Vice President*, 973.379.6644 x 131, aconte@blauberg.com
Peter J. Murano, Jr., *Managing Executive Director*, 973.379.6644 x 114, pjmurano@blauberg.com
Jack Schlenger, *Associate*, 973.379.6644 x 239, jack@blauberg.com

FOR SALE OR LEASE | 163-165 MAIN STREET | PEAPACK-GLADSTONE, NJ,



ACCESSIBILITY



1.1 MI
Route 206



4.7 MI
I-287



5.9 MI
I-78



10.0 MI
Route 22

For additional property information or to arrange an inspection, please contact the exclusive brokers:

Jason M. Crimmins, CCIM, SIOR, *President*, 973.379.6644 x 122, jmcrimmins@blauberg.com
Alessandro (Alex) Conte, CCIM, SIOR, *Executive Vice President*, 973.379.6644 x 131, aconte@blauberg.com
Peter J. Murano, Jr., *Managing Executive Director*, 973.379.6644 x 114, pjmurano@blauberg.com
Jack Schlenger, *Associate*, 973.379.6644 x 239, jack@blauberg.com

The information contained herein has been obtained from sources considered to be reliable, but no guarantee of its accuracy is made by this company. In addition, no representation is made respecting zoning, condition of title, dimensions, or any matters of a legal or environmental nature. Such matters should be referred to legal counsel for determination. Terms and conditions are subject to change without prior notice. Subject to errors and omissions.

