

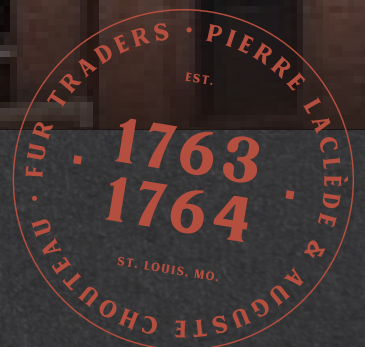
OLD JUDGE

LACLEDE'S LANDING

1763



OLD JUDGE
AT LACLEDE'S LANDING
704 - 710 N. 2ND ST. ST. LOUIS, MO 63102





OLD JUDGE



FLOOR PLANS

Historic Bones

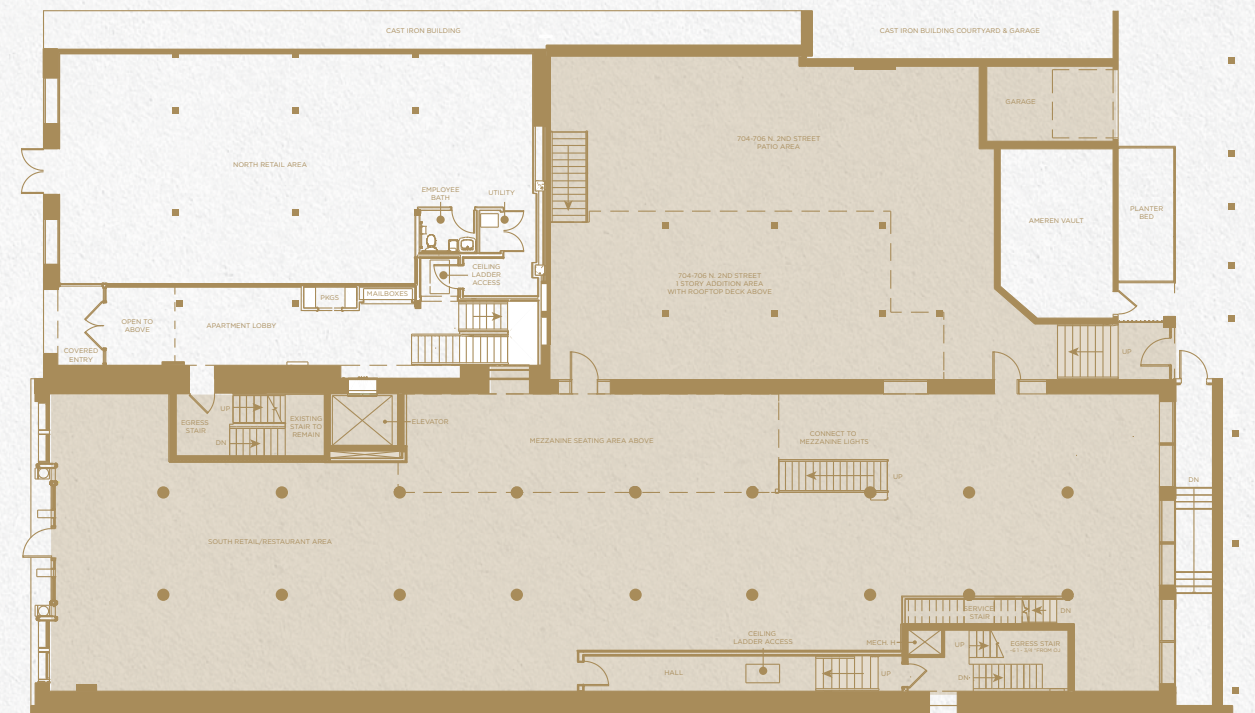
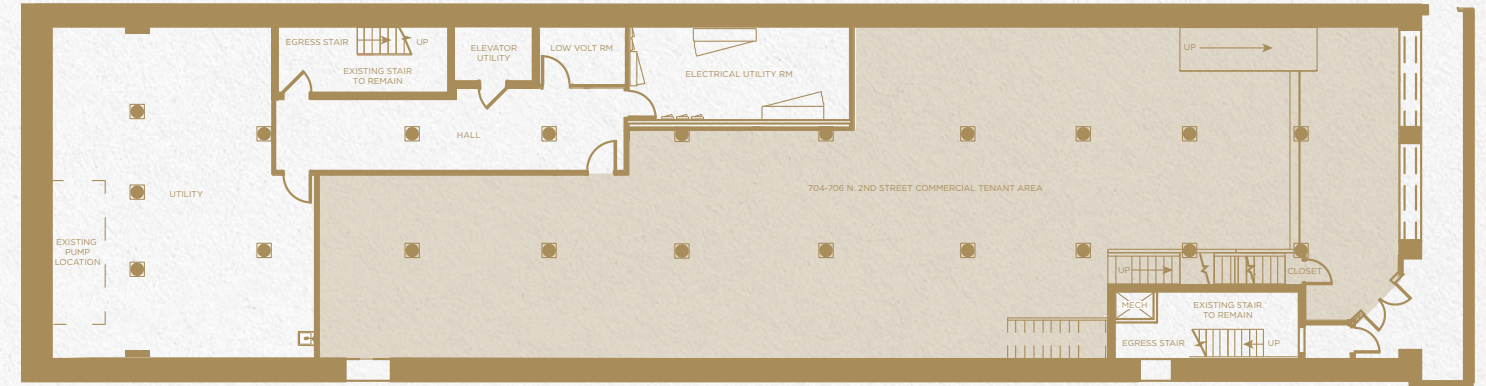
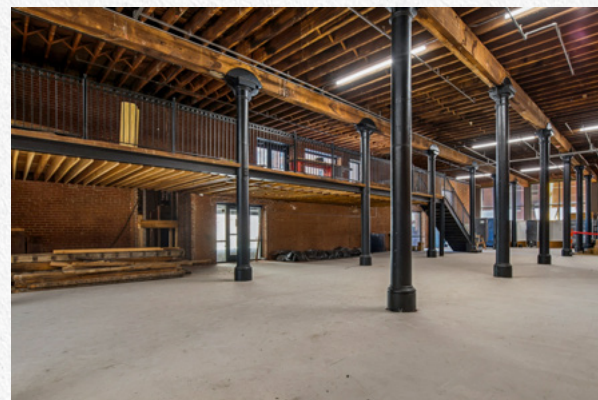
NEW RETAIL ENERGY

Old Judge is positioned for a new era of retail activity in the heart of Laclede's Landing. Originally built in 1884, the building offers historic character, street-level visibility and future momentum through planned residences and a rear dining courtyard.

Building Size:	40,522 SF
Retail Average Base Rent:	\$17 SF
Available Retail Space:	16,706 SF TOTAL
	704-706 N 2ND ST:
	14,644 SF
	710 N 2ND ST: 2,062 SF

FEATURES & AMENITIES

- Historic City Architecture
- 10' to 12' Ceilings
- Exposed Wood Beam Ceilings & Columns
- Controlled Building Access
- Surface Lot Gated Parking
- Rear Dining Courtyard
- White-boxed Retail Space with Mezzanine Loft Inside and Outside





LL LACLEDE'S LANDING

- ① Peper Lofts, 701 N 1st St
- ② Greeley, 620 N 2nd St
- ③ Hoffman, 153 Lucas St
- ③ Hoffman, 700 N 2nd St
- ④ Old Judge, 704-706 N 2nd St
- ④ Old Judge, 710 N 2nd St
- ⑤ Trader, 801 N 2nd St

LACLEDE'S LANDING

CONNECTED TO THE CORE

Laclede's Landing sits at the riverfront edge of downtown with quick access from I-44, nearby parking and MetroLink service within the district. Whether coming in for work, heading home, meeting up or making a day of it downtown, the Landing is easy to reach and easy to explore once you arrive.

CAR & BIKE PARKING

1
MIN. | I-44 ACCESS

5
MIN. | DOWNTOWN ST. LOUIS

6
MIN. | I-64

16
MIN. | ST. LOUIS INTERNATIONAL AIRPORT

FOR MORE INFORMATION,
PLEASE CONTACT:

JOHN WARREN
john.warren@cushwake.com

