

point west

2|3

3033|3055

**kettering
boulevard**

MORaine, OH 45439

**click [HERE](#)
for virtual tour**

AVAILABLE FOR LEASE



for more information, contact:

Patrick Hewitt
Vice President
+1 937.641.0419
Patrick.Hewitt@cbre.com

Matthew Arnovitz
SIOR, CCIM, CPM
Senior Associate
+1.937.226.1550
Matt.Arnovitz@cbre.com

CBRE



property highlights



high-end office space
with available suites
ranging from
±371 rsf to ±11,827 rsf

dedicated building
cafeteria



atriums in both
buildings offer
abundant natural
light

on-site property
management



ample parking,
including 41 covered
executive spaces

location highlights

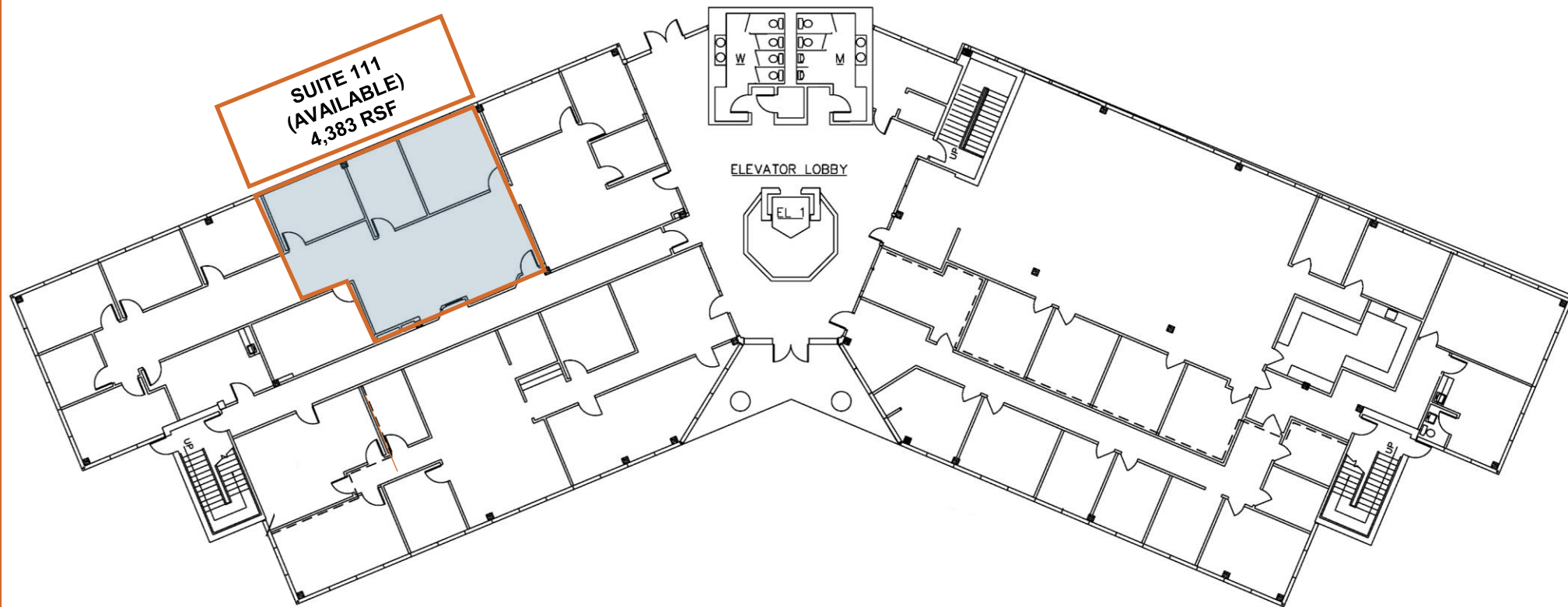
Close proximity to casual | formal dining options & within minutes of:

- + Hills & Dales Metro Park
- + Cox Arboretum
- + Wright Brothers National Museum
- + Great Miami River Recreational Trail
- + NCR Country Club
- + Moraine Country Club
- + Carillion Historical Park
- + Woodland Cemetery

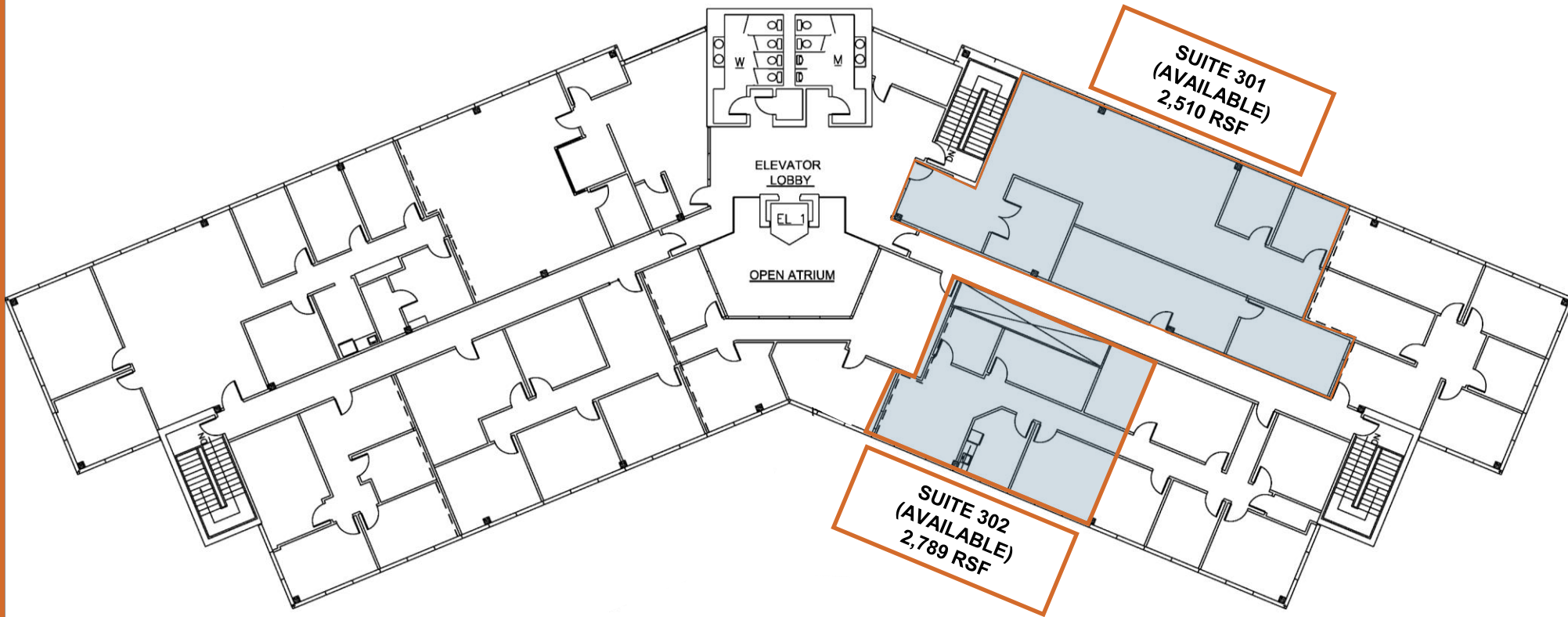
3033 building details

- + 46,069 rsf
- + 3 stories
- + 15,000-rsf average floor plates
- + constructed in 1985
- + \$15.00 | rsf full-service gross
- + availabilities ranging from 1,183 SF to 7,723 SF

FIRST FLOOR



THIRD FLOOR



3055 building details

- + 86,146 rsf
- + 4 stories
- + 21,000-rsf average floor plates
- + constructed in 1986
- + \$15.00 | rsf full-service gross
- + availabilities ranging from 841 SF -1,827 SF

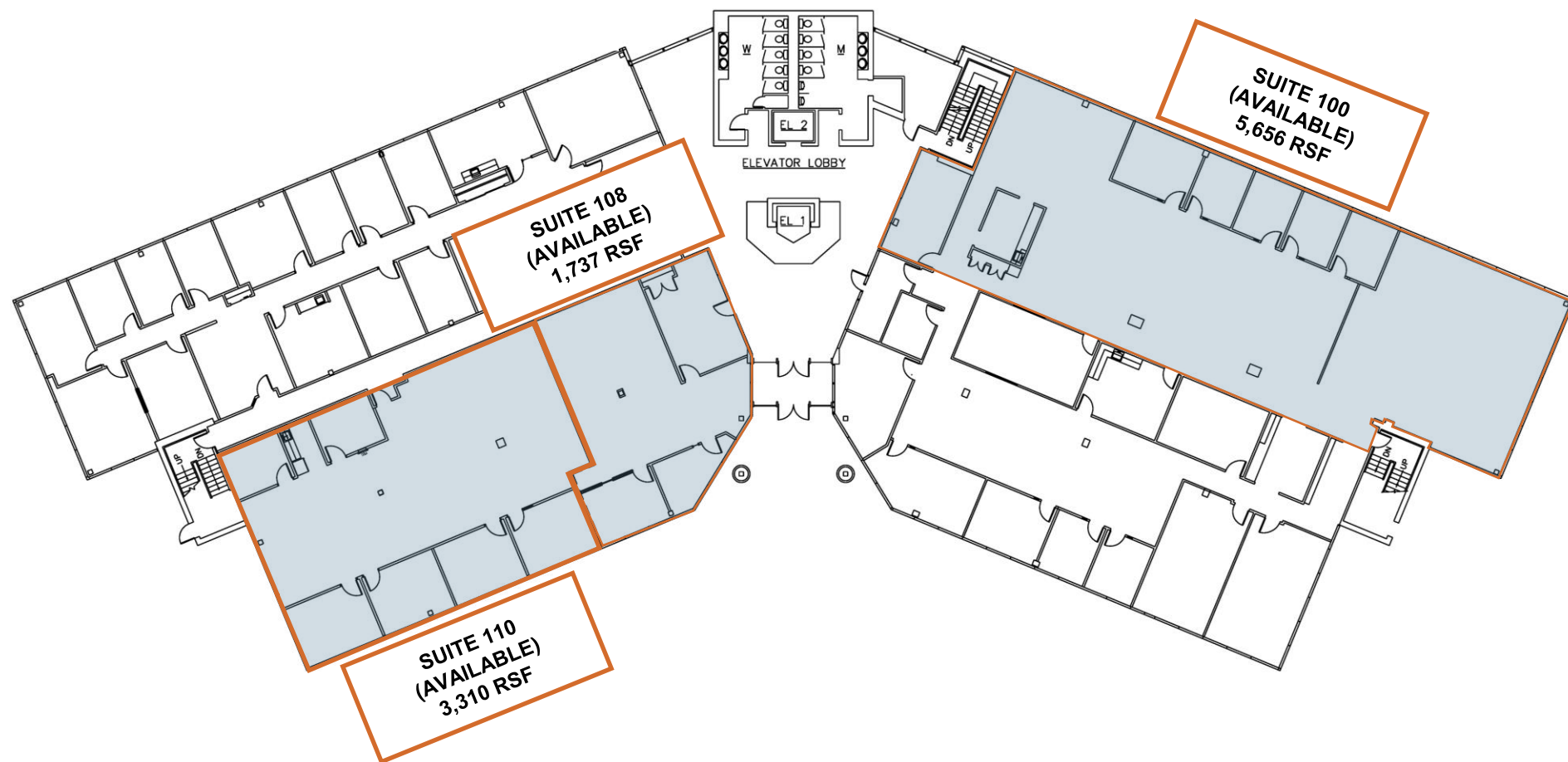
interior images



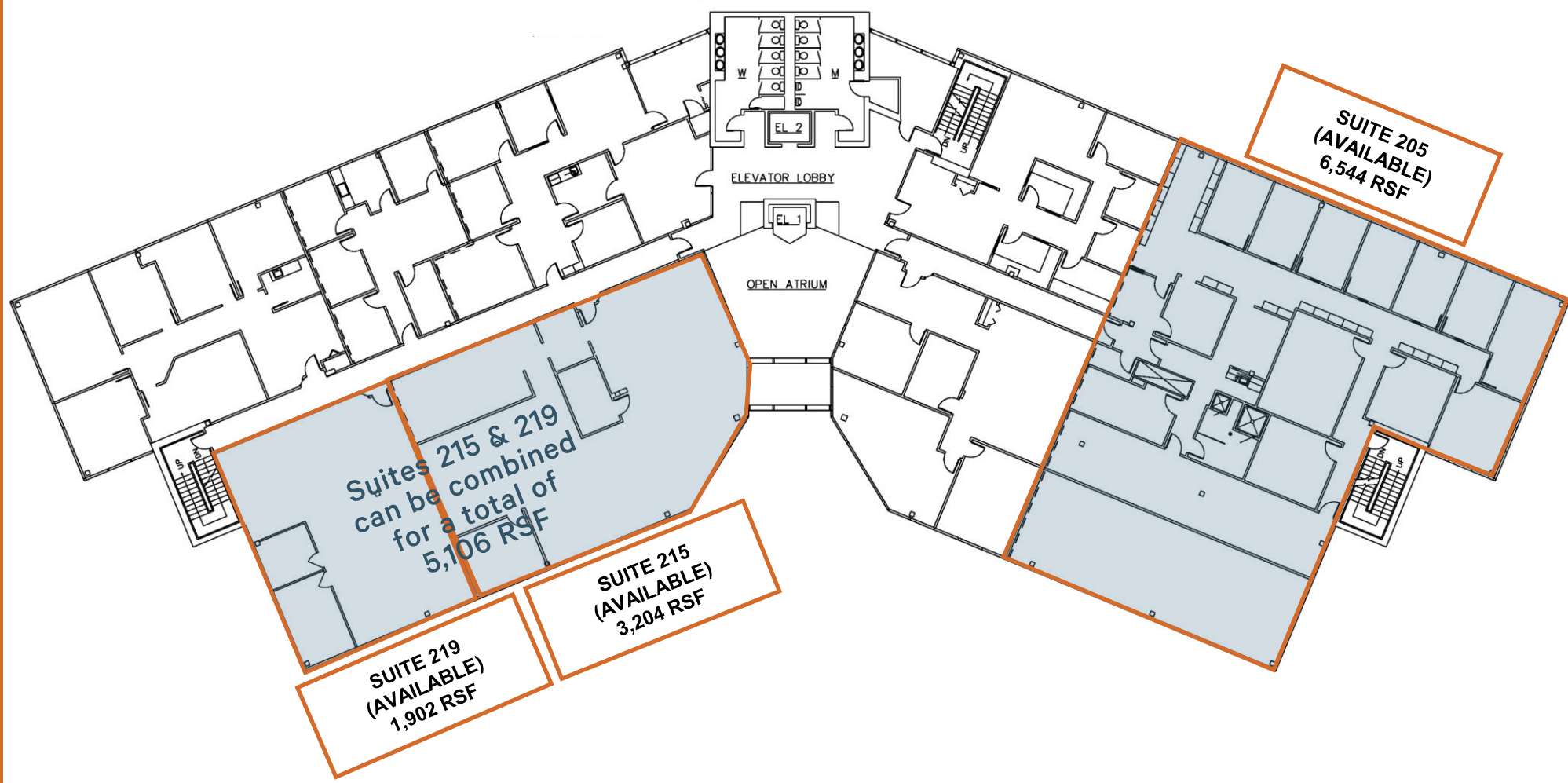
atrium ~ available space window lines ~ covered executive parking



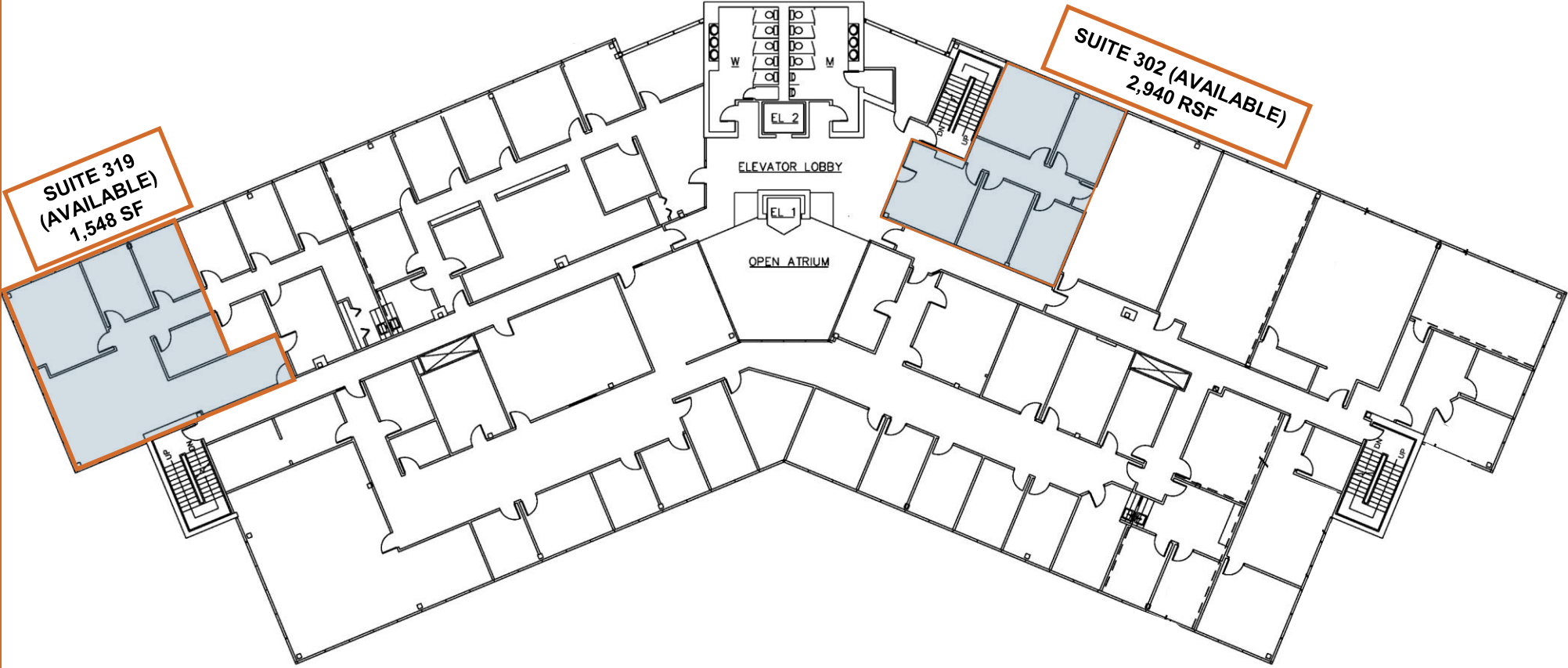
FIRST FLOOR



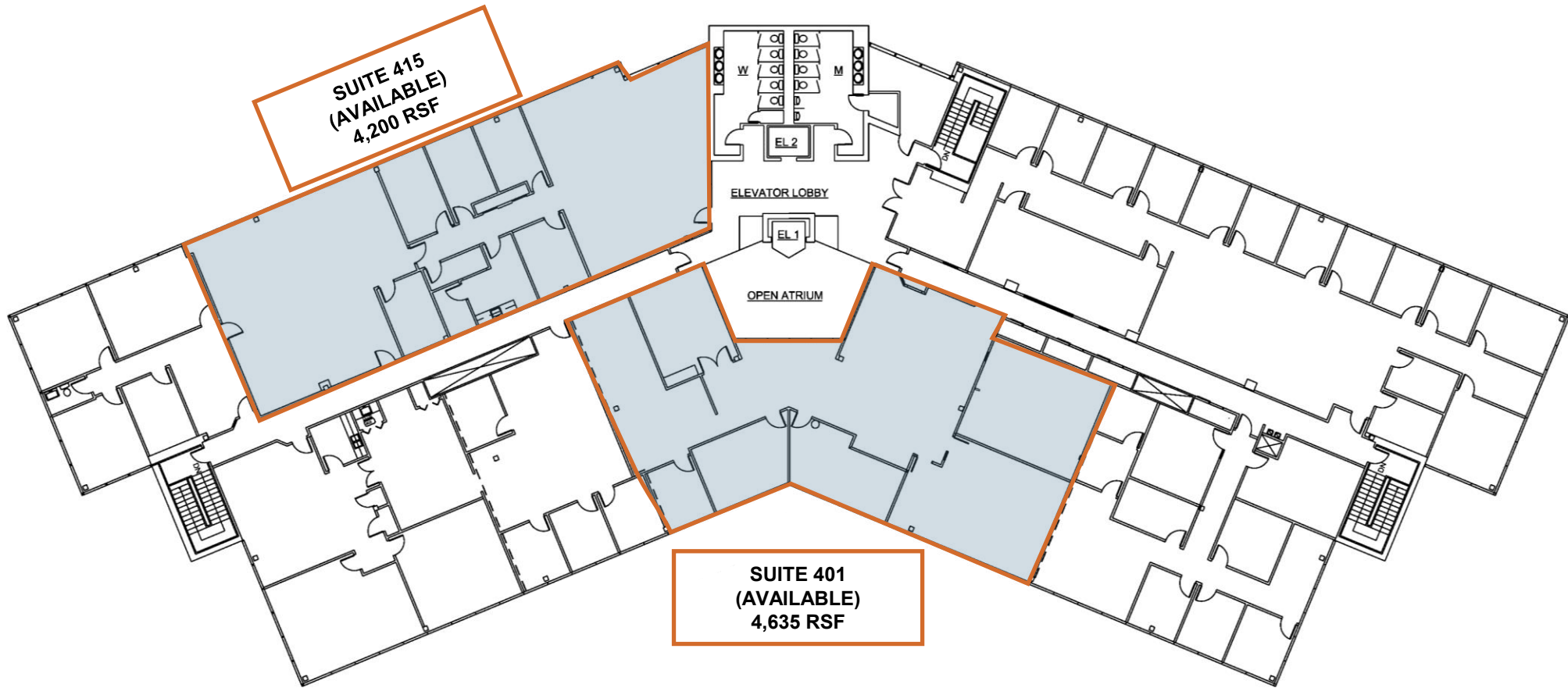
SECOND FLOOR



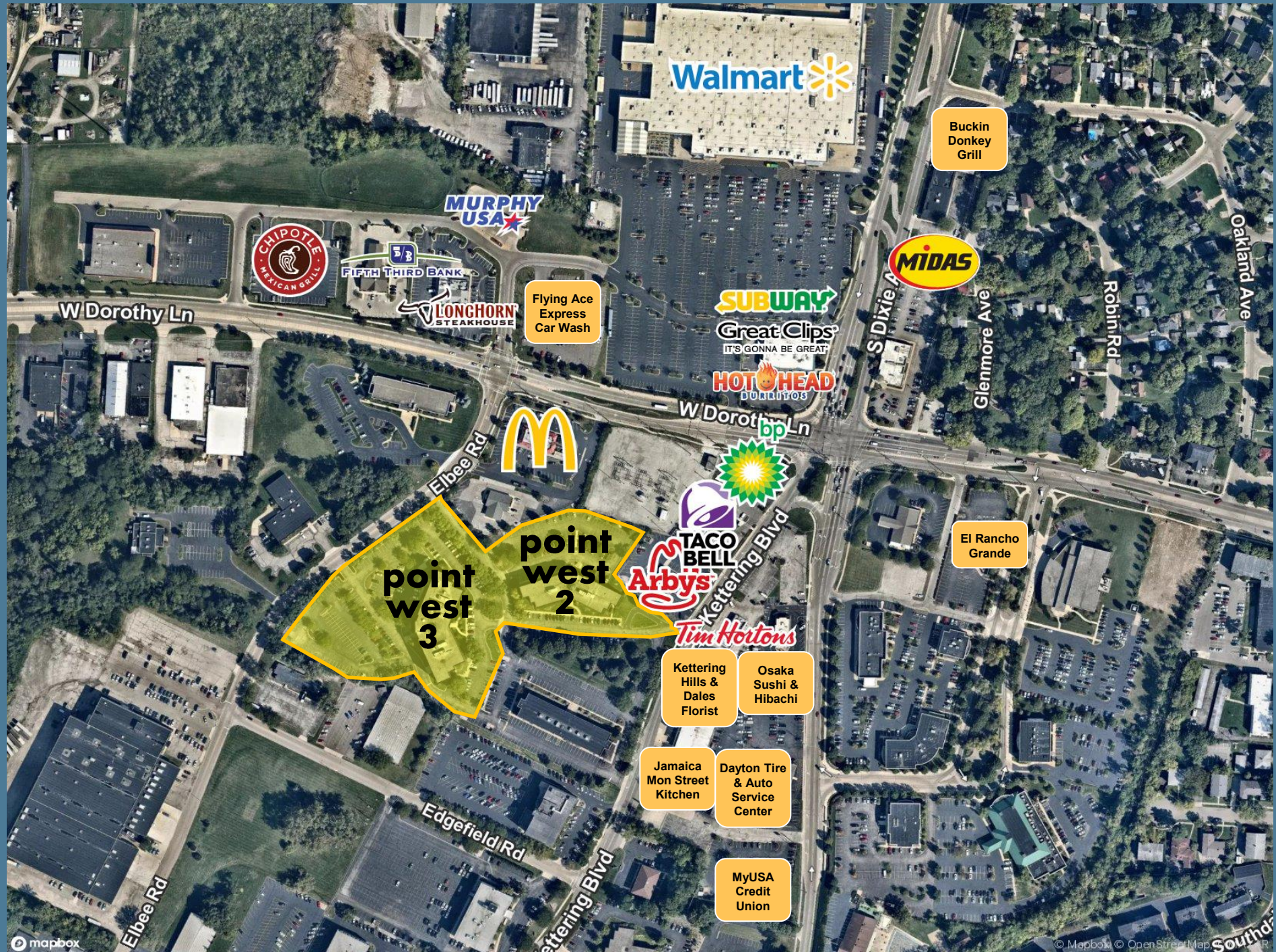
THIRD FLOOR



FOURTH FLOOR



site aerial



point west

2|3

3033|3055

**kettering
boulevard**

MORaine, OH 45439

© 2022 CBRE, Inc. All rights reserved. This information has been obtained from sources believed reliable, but has not been verified for accuracy or completeness. You should conduct a careful, independent investigation of the property and verify all information. Any reliance on this information is solely at your own risk. CBRE and the CBRE logo are service marks of CBRE, Inc. All other marks displayed on this document are the property of their respective owners, and the use of such logos does not imply any affiliation with or endorsement of CBRE. Photos herein are the property of their respective owners. Use of these images without the express written consent of the owner is prohibited.



for more information, contact:

Patrick Hewitt
Vice President
+1 937.641.0419
Patrick.Hewitt@cbre.com

Matthew Arnovitz
SIOR, CCIM, CPM
Senior Associate
+1.937.226.1550
Matt.Arnovitz@cbre.com

CBRE