

Office & Industrial Condos For Sale

1075 North Service Road W
Oakville, ON



1075

North Service Road W
Oakville, ON

Property Overview

1075 North Service Road provides you with a unique ownership/investment opportunity to suit your individual needs. This upgraded building is being converted to office and industrial condominiums to meet the markets high demand for ownership of well-located, well-designed office & industrial condominiums

This prestigious location offers fantastic exposure/signage opportunities on the QEW as well superior access to QEW/403.

Property Summary

TOTAL FLOOR AREA

109,148 sf

SITE AREA

6.4 Acres

WAREHOUSE

61,804 sf

OFFICE

47,344 sf

CLEAR HEIGHT

up to 18'

SHIPPING

10 TL, 4 D/I

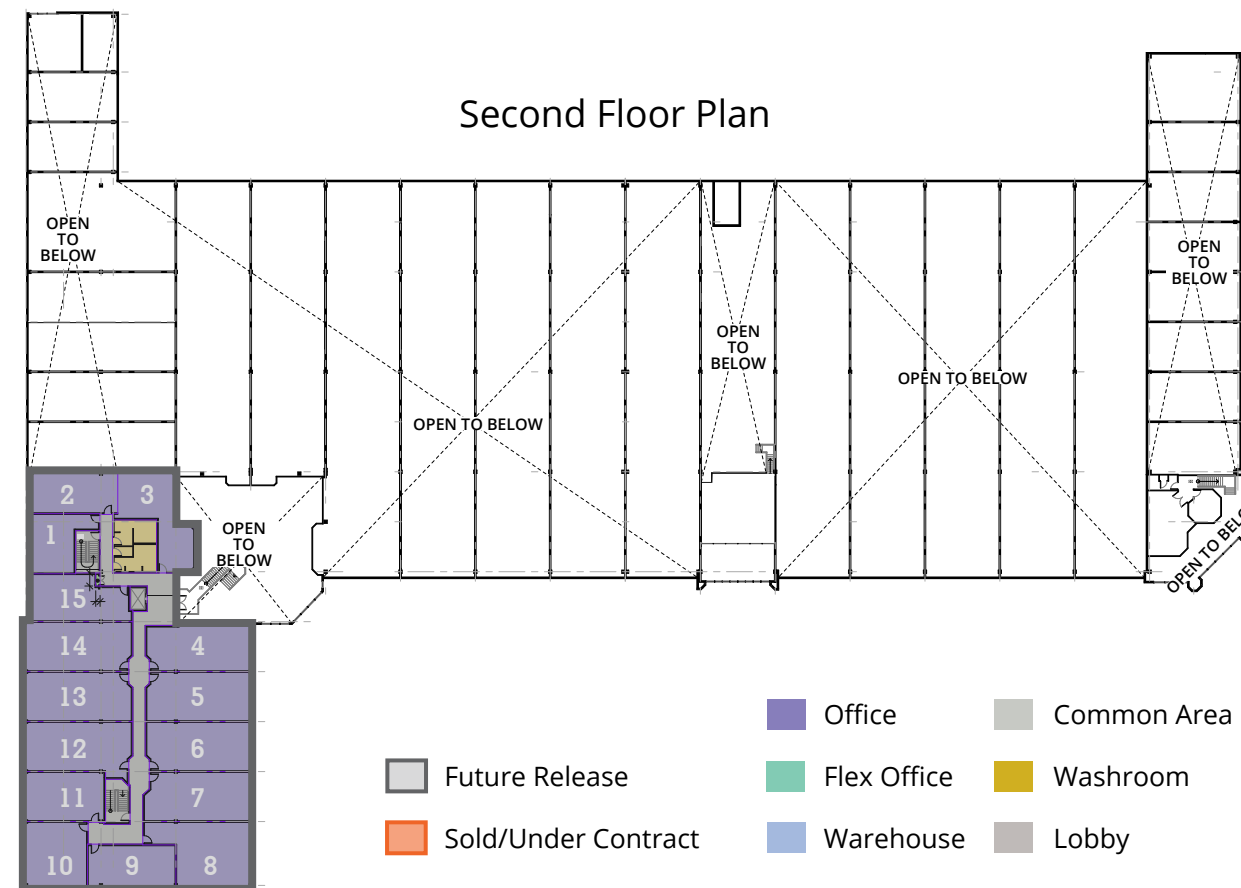
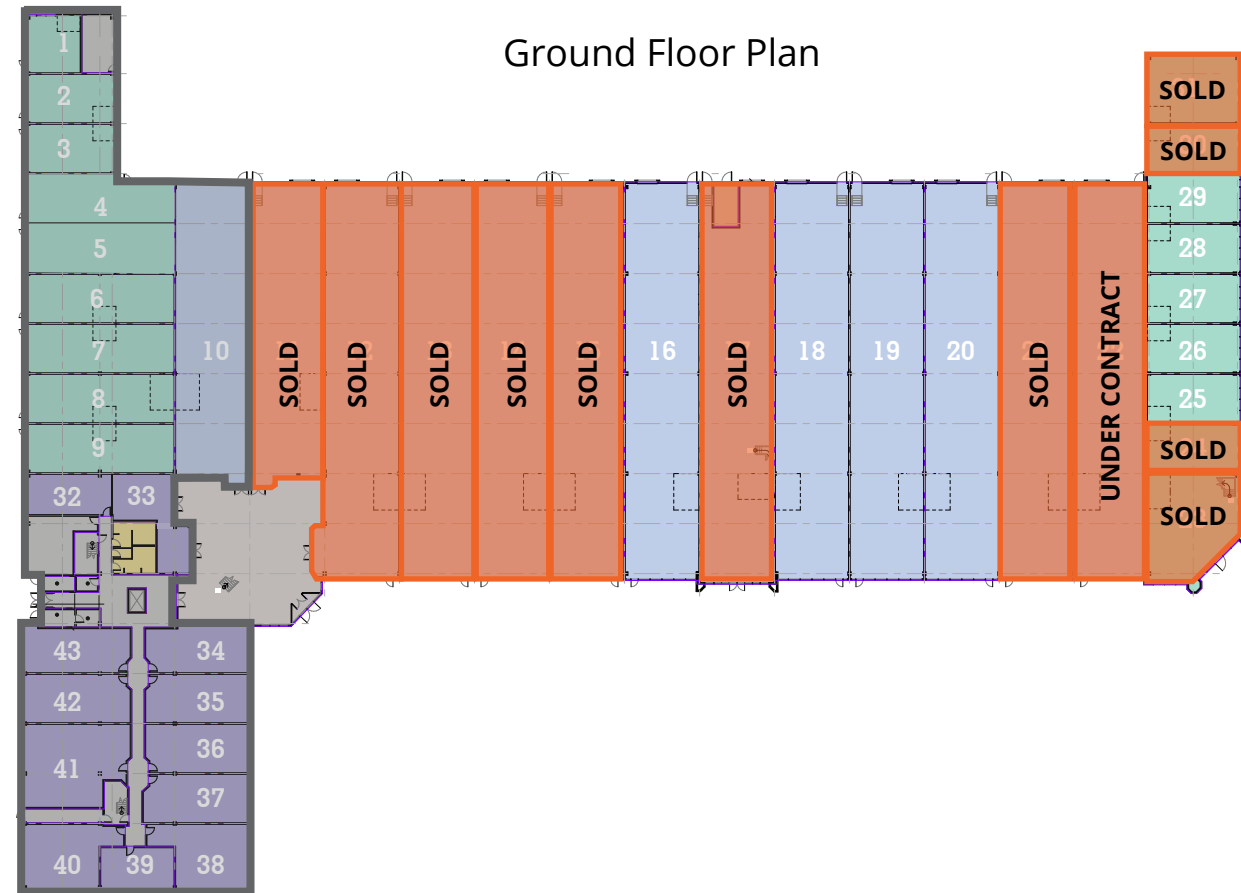
ZONING

E1

PARKING

228 stalls





Future Release
 Sold/Under Contract
 Office
 Flex Office
 Common Area
 Washroom
 Warehouse
 Lobby



OFFICE		
Total Area: 29,253 sf		
UNIT	SIZE (SF)	PRICE
UNIT 32	777	
UNIT 33	1,059	
UNIT 34	1,100	
UNIT 35	1,142	
UNIT 36	1,142	
UNIT 37	1,160	
UNIT 38	1,286	
UNIT 39	727	
UNIT 40	1,261	
UNIT 41	1,805	
UNIT 42	1,147	
UNIT 43	1,091	
UNIT 1	718	
UNIT 2	791	
UNIT 3	1,081	
UNIT 4	1,096	
UNIT 5	1,142	
UNIT 6	1,142	
UNIT 7	1,151	
UNIT 8	1,305	
UNIT 9	867	
UNIT 10	933	
UNIT 11	871	
UNIT 12	1,191	
UNIT 13	1,147	
UNIT 14	1,147	
UNIT 15	977	

FLEX OFFICE		
Total Area: 18,091 sf		
UNIT	SIZE (SF)	PRICE
UNIT 1	547	
UNIT 2	754	
UNIT 3	749	
UNIT 4	1,138	
UNIT 5	1,215	
UNIT 6	1,215	
UNIT 7	1,215	
UNIT 8	1,215	
UNIT 9	1,215	
UNIT 23	2,357	SOLD
UNIT 24	767	SOLD
UNIT 25	769	\$422,950
UNIT 26	769	\$422,950
UNIT 27	769	\$422,950
UNIT 28	769	\$422,950
UNIT 29	770	\$423,500
UNIT 30	776	SOLD
UNIT 31	1,078	SOLD

WAREHOUSE		
Total Area: 61,804 sf		
UNIT	SIZE (SF)	PRICE
UNIT 10	3,833	
UNIT 11	3,835	SOLD
UNIT 12	4,996	SOLD
UNIT 13	4,858	SOLD
UNIT 14	4,858	SOLD
UNIT 15	4,872	SOLD
UNIT 16	4,872	\$2,192,400
UNIT 17	5,571	SOLD
UNIT 18	4,855	\$2,184,750
UNIT 19	4,855	\$2,184,750
UNIT 20	4,855	\$2,184,750
UNIT 21	4,855	SOLD
UNIT 22	4,686	UNDER CONTRACT

Future Release
 Sold/Under Contract

Zoning
E1 Office Employment

- Business Office
- Medical Office
- Training Facility
- Warehousing
- Food Production
- Commercial School
- Public Hall

The Town of Oakville

Oakville is located on Lake Ontario within the Greater Toronto Area (GTA), a rapidly growing municipality with a vibrant and dynamic community that has committed to having an inclusive community and workplace through its 'Diversity and Inclusion Action Plan,' created in 2021. Oakville provides residents with access to numerous parks, multi-cultural dining experiences, and antique to high end shopping. The residents of Oakville benefit from the 'Business Improvement Areas' initiative which provides additional services such as street beautification, branding, and seasonal improvements to its defined areas. The municipality is an affluent area with an average household income of \$199,000, 70% higher than the provincial average.

Oakville has a population of 212,353 and boasts access to a high quality local work force; 81% of residents aged between 25-64 have a postsecondary education, with 55% having a bachelor's degree or above. The Town of Oakville is in a prime location for businesses, with highway connection and GO Transit services, Oakville employers can draw on work forces across the Greater Toronto Area.

An award-winning institution, the main campus of the Sheridan Institute of Technology and Advanced Learning is located in Oakville. Sheridan College provides a variety of education and training opportunities in business, animation, engineering, arts, social sciences and technical fields. Sheridan provides education to 50,000 students and is recognized as the top animation school in Canada.



Population Growth

6.4% population growth from 2016 to 2021



Low Taxes

6th lowest property tax rates among GTA municipalities



Skilled Workforce

Approx. 81% of residents have a post-secondary education

Major Corporations

Professional and financial services is the largest sector of employment in Oakville with over 27,000 employees. Companies such as Ford Motor Company and Siemens have their Canadian headquarters in the town alongside other major companies' operations such as PwC, GE Water & Process Technologies.

Future Growth & Development

Oakville has been home to many large development projects. With the goal of stimulating growth, the Municipality of Oakville has taken many forward thinking initiatives to make Oakville an attractive place to live, work, and play. One of these developments is the Bronte Green development, located just north of Bronte Road and Highway 403, a residential community that will consist of 1,181 residential units, elementary school, and numerous parks.

Looking forward the Town of Oakville is focused on developing the economy through innovation, job creation and new investment. Part of the Economic Development Strategy for 2019-2024 is to increase commercial and industrial development by reducing approval timelines and having greater transparency.

SIEMENS

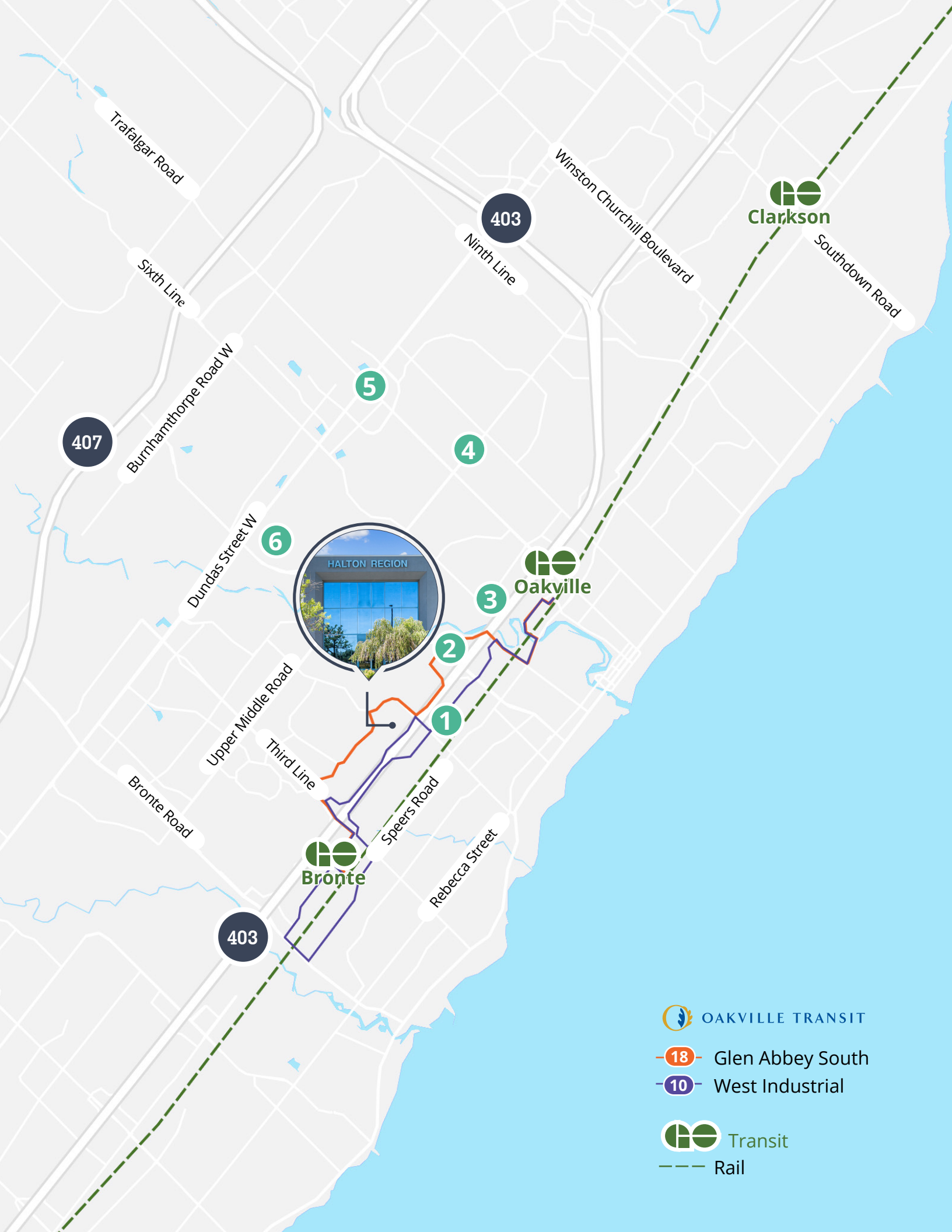


 **Collins Aerospace**



1075 North Service Road W Oakville, ON

TRANSIT & AMENITIES



- 1 RONA**
 Chuck's Roadhouse Bar & Grill
 Tim Horton's
 A&W
 Puppies Ontario
- 2 Dorval Crossing**
 Winners Starbucks
 Staples McDonalds
 LCBO Subway
 Metro
- 3 Oakville Place**
 Goodlife Fitness
 Starbucks
 SportChek
 Goodfellas Wood Oven Pizza
- 4 Upper Oakville Shopping Centre**
 Shoppers Drug Mart
 Beer Store
 The Oakville Pump & Patio
- 5 SmartCentres Oakville**
 Walmart
 Canadian Tire
 Real Canadian Superstore
 Pet Valu
- 6 RioCentre**
 Food Basics barBurrito
 Dollarama The Stout Monk
 Fortinos Shawarma X
 Popeye's

Amenities within 5 km

323

RESTAURANTS

213

RETAIL

7

HOTELS

15

FITNESS CENTRES

33

BANKS

15

GAS STATIONS

- 3** minutes
 2.2 km to
QEW
- 3** minutes
 2.2 km to
Highway 403
- 6** minutes
 3.4 km to
Bronte GO
- 7** minutes
 9.6 km to
Oakville GO
- 11** minutes
 9.8 km to
Highway 407
- 18** minutes
 23.8 km to
Mississauga City Centre
- 36** minutes
 41.5 km to
Downtown Toronto
- 25** minutes
 38.8 km to
Pearson International Airport

1075

North Service Road W
Oakville, ON



BUILDING FEATURES

Exterior Walls

Structural steel frame with steel stud or concrete block infill and pre-cast panel finish. Windows and doors as per existing elevations.

Demising/Common Walls

Warehouse Units: Demising/Common walls to be concrete block or drywall to underside of the roof deck.

Office Units: Demising/Common walls to be metal framing and drywall. Corridor walls provided to separate the unit from the common area shall be unpainted on the units' side and constructed as a fire-rated gypsum board on metal stud framing.

Ceiling Heights

Warehouse Units: Clear dimension to underside of structural steel deck is 20 feet, to underside of steel joist is 18 feet.

Office Units: Clear dimension from the ground floor to underside of structural steel deck is 12 feet, to underside of ceiling is 9 feet, The clear dimension from the second floor to underside of structural steel deck is 13 feet, to underside of ceiling is 9 feet.

Floors

Warehouse Units: Ground floor – exposed concrete slab on grade.

Office Units: Exposed concrete slab on grade.

HVAC

Warehouse Units: Each unit to receive rooftop unit providing cooling and gas heating to accommodate up to 20% of the office area. For any Warehouse units with a garage door, one (1) natural gas fired unit heater to be included. Distribution ducting for the rooftop unit to be completed by the Purchaser.

Office Units: Each unit to receive stub connection to central A/C system.

Flex Office Units: Each unit to receive rooftop unit providing cooling and gas heating base on up to 400 square feet per ton of cooling. Distribution ducting for rooftop unit to be completed by the Purchaser.

Hydro

Warehouse Units: Each unit to receive the following: 60A, 600V main disconnect and a 30kVA transformer with a 120/208V electrical panel.

Plumbing

Warehouse Units: Each unit shall include a cut-out with standard sanitary service connection (Typical Y-Connection), domestic waterline rough-in and plumbing vent in the warehouse portion in a location at the Vendor's discretion. All above-ground plumbing, drainage, fixtures and finishing to be completed by the Purchaser.

Office Units: Where applicable, the unit will include a 3" diameter plumbing vent going through the roof, for future plumbing connection to be completed by the Purchaser. All required rough-ins, waterlines, fixtures and finishing to be completed by the Purchaser.

FAQS

What is the annual condo fee?

Office \$8.30 psf (est.)

Industrial \$4.50 psf (est.)

What are the annual real estate taxes?

Office \$4.28 psf (est.)

Industrial \$3.50 psf (est.)

What is the warranty period?

General warranty for one year. Specific extended warranties available upon request.

What signage opportunities are available?

Exterior building signage available

Estimated condo registration date?

Q3 2024

Estimated completion date for owner occupancy?

Q4 2023 to Q1 2024

What is the deposit structure

- 5% on signing
- 5% within 30 days
- 10% within 60 days

Who is the property manager?

Connium PM

Office & Industrial Condos For Sale

1075 North Service Road W
Oakville, ON

Get more information

Jeff Flemington, CCIM, SIOR, LEED AP
Broker, Principal
905 283 2336
jeff.flemington@avisonyoung.com

Harrison Livermore
Sales Representative, Principal
905 283 2387
harrison.livermore@avisonyoung.com

Chris Daly
Sales Representative, Associate
905 283 2590
chris.daly@avisonyoung.com

Jonathan Yuan
Sales Representative, Principal
416 673 4037
jonathan.yuan@avisonyoung.com

Avison Young Commercial Real Estate Services, LP, Brokerage
77 City Centre Drive, Suite 301, Mississauga, Ontario L5B 1M5
Office 905 712 2100 **Fax** 905 712 2937 avisonyoung.ca

© 2024. Avison Young Commercial Real Estate Services, LP, Brokerage. Information contained herein was obtained from sources deemed reliable and, while thought to be correct, have not been verified. Avison Young does not guarantee the accuracy or completeness of the information presented, nor assumes any responsibility or liability for any errors or omissions therein. © Mapbox, © OpenStreetMap

