



# Office Space for Lease

1200 6th Ave Belmont, CA

## Property Highlights

- Suite 301: 806 SF
- Great Location Near Numerous Amenities
- Fully Sprinklered
- Interior & Exterior Completely Remodeled in 2018
- Keyless Entry and Intercom System
- Heat and AC Throughout
- New Water Heater
- 0.3 Miles to Caltrain
- 12 Off-Street Parking Spaces

*For information, please contact:*

### Jay Leslie

Senior Managing Director

t 650 358 5273

[jay.leslie@nmrk.com](mailto:jay.leslie@nmrk.com)

CA RE License #01244555

### Deborah O'Reilly

Director

t 650 358 5256

[deborah.oreilly@nmrk.com](mailto:deborah.oreilly@nmrk.com)

CA RE License #01895522

[nmrk.com](http://nmrk.com)

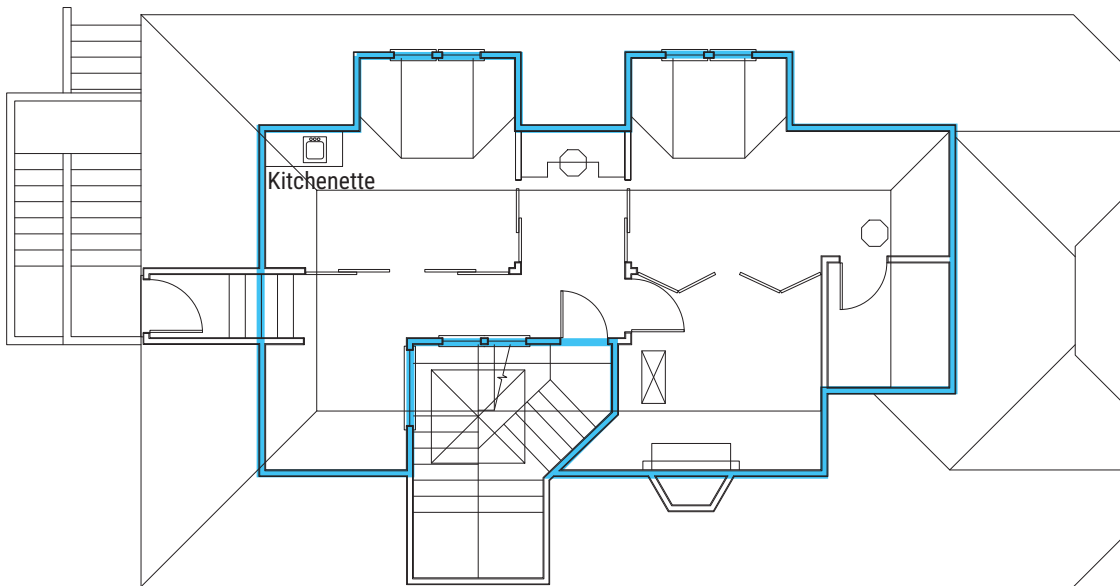


# NEWMARK

The information contained herein has been obtained from sources deemed reliable but has not been verified and no guarantee, warranty or representation, either express or implied, is made with respect to such information. Terms of sale or lease and availability are subject to change or withdrawal without notice.

1200 6TH AVENUE, BELMONT CA

Suite 301: ±806 SF with dividers for 4 separate work areas & kitchenette



THIRD FLOOR



[nmrk.com](http://nmrk.com)



NEWMARK

The information contained herein has been obtained from sources deemed reliable but has not been verified and no guarantee, warranty or representation, either express or implied, is made with respect to such information. Terms of sale or lease and availability are subject to change or withdrawal without notice.



1200 6TH AVENUE, BELMONT CA

## Location & Amenities



[nmrk.com](http://nmrk.com)



# NEWMARK

The information contained herein has been obtained from sources deemed reliable but has not been verified and no guarantee, warranty or representation, either express or implied, is made with respect to such information. Terms of sale or lease and availability are subject to change or withdrawal without notice.