

# SHOPS AT DOVE VALLEY

4705 E Carefree Hwy, Cave Creek, AZ 85331



## SWC Black Mountain Pkwy and Carefree Hwy

- **Space Available: ±1,308 SF & ±3,702 SF**
- High income demographics (over \$184,090 average household income within 5-mile radius)
- Located within the 850 Acre Dove Valley Ranch master-planned golf community
- NNN Expenses + \$4.93/SF



Monument Signage Available

**Gabe Ortega**  
DIR: (480) 561-0189  
gortega@camcre.com

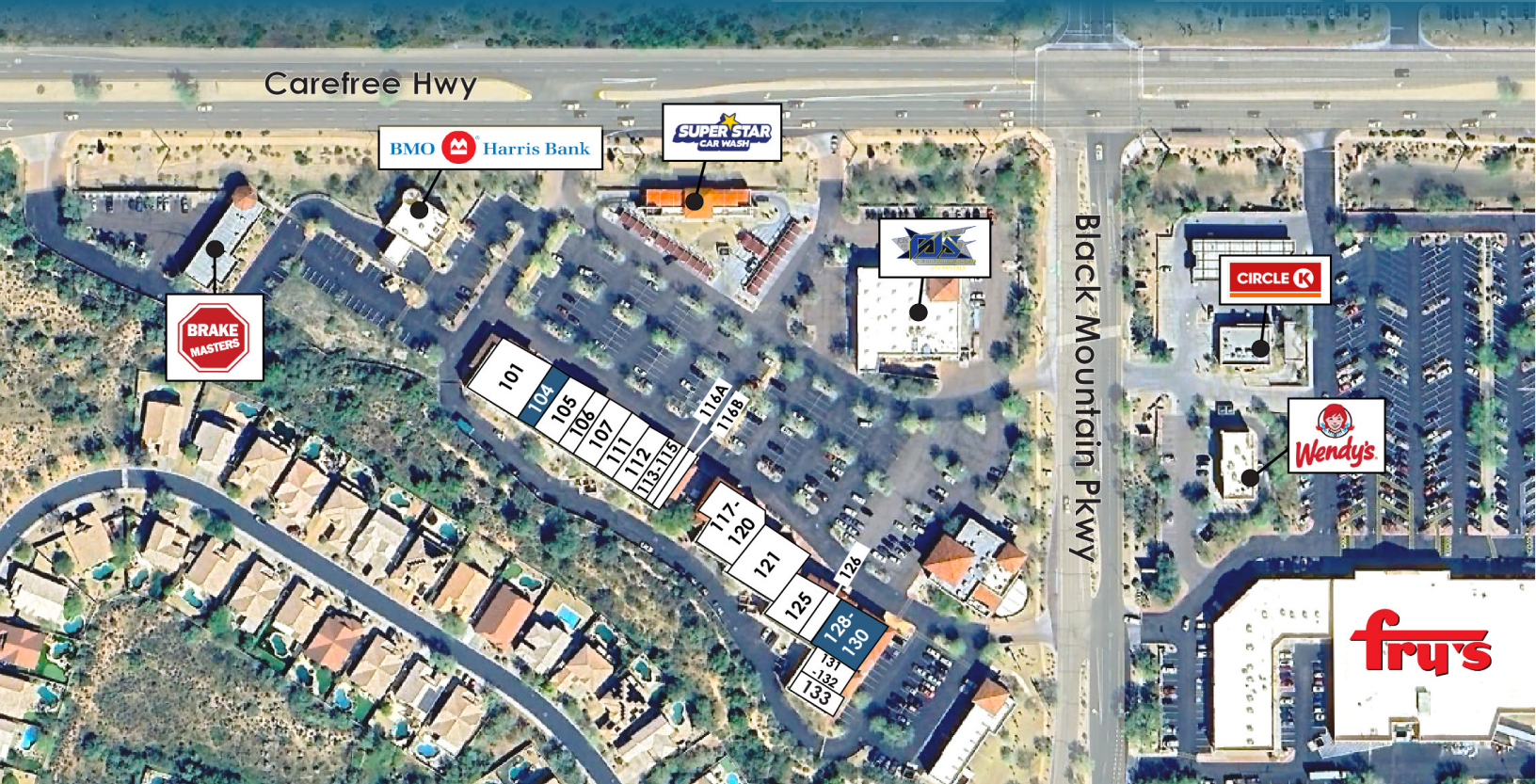
**Chris Gerow**  
DIR: (602) 491-0189  
cgerow@camcre.com

**Shelby Tworek**  
DIR: (602) 491-1030  
stworek@camcre.com



# SHOPS AT DOVE VALLEY

4705 E Carefree Hwy, Cave Creek, AZ 85331



Suite	Tenant	Size (SF)	Price Per SF	Suite	Tenant	Size (SF)	Price Per SF
101	Lil Miss Butcher			116B	Jayci Shaye Aesthetics		
<b>104</b>	<b>Available</b>	<b>1,308</b>	<b>\$17.00</b>	117-120	Heart & Soul Cafe		
105	Ray's Pizza			121	Leslie's Pool Supply		
106	DaVinci Health Services			125	Pinky's Nail		
107	Fit Body Boot Camp			126	Dentist		
111	Honey Baked Ham			<b>128-130</b>	<b>Available (Do Not Disturb)</b>	<b>3,702</b>	<b>\$16.00</b>
112	Zona's Oil			112	Zona's Oil		
113-115	Tangles Salon & Boutique			133	Allstore Builders Corp		
116A	Chiropractor						

**Gabe Ortega**

DIR: (480) 561-0189

gortega@camcre.com

**Chris Gerow**

DIR: (602) 491-0189

cgerow@camcre.com

**Shelby Tworek**

DIR: (602) 491-1030

stworek@camcre.com



# SHOPS AT DOVE VALLEY

4705 E Carefree Hwy, Cave Creek, AZ 85331



**Gabe Ortega**

DIR: (480) 561-0189

[gortega@camcre.com](mailto:gortega@camcre.com)

**Chris Gerow**

DIR: (602) 491-0189

[cgerow@camcre.com](mailto:cgerow@camcre.com)

**Shelby Tworek**

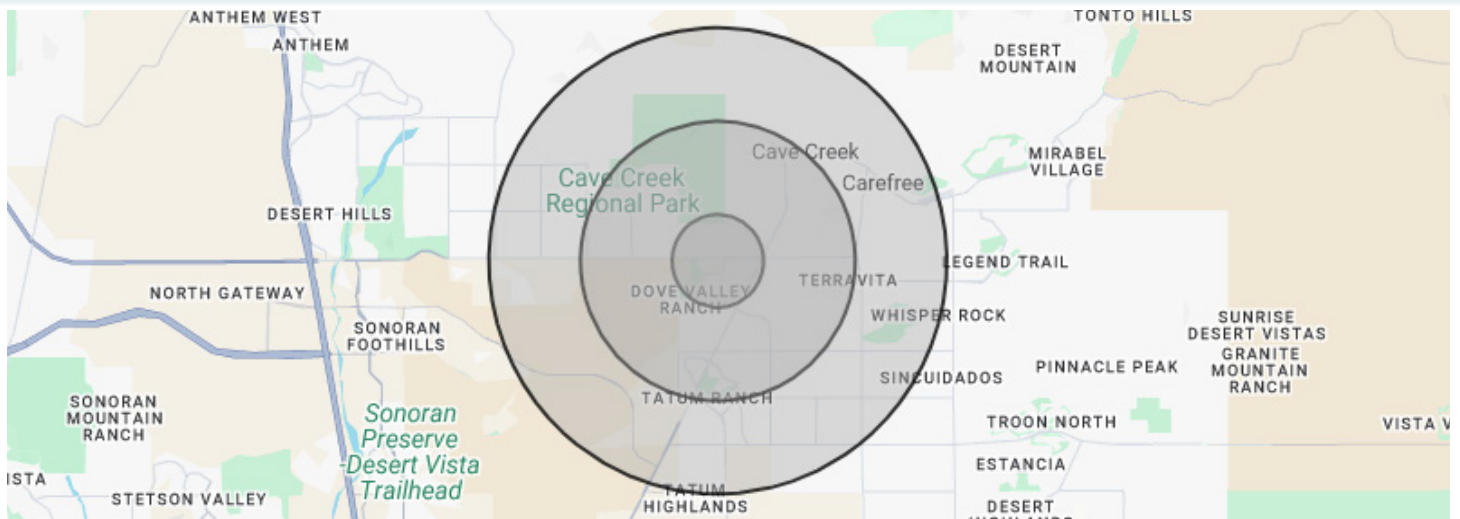
DIR: (602) 491-1030

[stworek@camcre.com](mailto:stworek@camcre.com)



# SHOPS AT DOVE VALLEY

4705 E Carefree Hwy, Cave Creek, AZ 85331



## DEMOGRAPHICS

POPULATION	1-MILE	3-MILE	5-MILE
2029 Projection	3,901	24,575	53,875
Current Year	3,596	22,594	49,462
2020 Population	3,459	21,409	46,442
Growth Current Year - 2029	1.7%	1.8%	1.8%
Growth 2020 - Current Year	1.0%	1.4%	1.6%

HOUSEHOLDS	1-MILE	3-MILE	5-MILE
2029 Projection	1,576	10,038	22,160
Current Year	1,452	9,216	20,305
2020 Population	1,406	8,764	19,075
Growth Current Year - 2029	1.7%	1.8%	1.8%
Growth 2020 - Current Year	0.7%	0.9%	0.7%

INCOME	1-MILE	3-MILE	5-MILE
Avg Household Income	\$147,100	\$157,375	\$156,737
Median Household Income	\$117,543	\$125,355	\$124,579

### CONFIDENTIALITY STATEMENT

2024 Capital Asset Management, LLC. All rights reserved. The information contained in this communication is strictly confidential. This information has been obtained from sources believed to be reliable but has not been verified. No warranty or representation, express or implied, is made as to the condition of the property (or properties) referenced herein or as to the accuracy or completeness of the information contained herein, and same is submitted subject to errors, omissions, change of price, rental or other conditions, withdrawal without notice, and to any special listing conditions imposed by the property owner(s). Any projections, opinions or estimates are subject to uncertainty and do not signify current or future property performance.

**Gabe Ortega**

DIR: (480) 561-0189

gortega@camcre.com

**Chris Gerow**

DIR: (602) 491-0189

cgerow@camcre.com

**Shelby Tworek**

DIR: (602) 491-1030

stworek@camcre.com

