

1.36 - Acre Commercial Site

Southeast Corner Hickory Tree Rd & Nolte Rd
In Rapidly Growing Area of St. Cloud, Florida



- Cleared and rough-graded with utilities stubbed at property
- Off-site master retention, dry pre-treatment required
- Property surrounded by Twin Lakes and other planned communities with thousands of new and upcoming homes
- Zoned CCP, Community Center Perimeter, Osceola County
- Potential uses include daycare, gas/convenience, professional/medical office, vet clinic, restaurant (incl. drive-thru), retail, storage, ALF, religious facility, membership club, etc.
- Up to 0.7 FAR allowable
- 10,300 AADT Nolte Rd, 6,800 AADT Hickory Tree Rd
- Limited commercial sites available as area rapidly develops with vast residential developments
- Less than 1.5 miles from US HWY 192 in growing St. Cloud area of Osceola County

FOR SALE: \$1,350,000

Demographic Summary

	1 Mile	3 Mile	5 Mile
Population			
2024 Estimate	3,724	33,091	82,253
2020 Census	2,148	26,122	73,144
2024-2029 Growth	5.2%	4.5%	4.1%
Households			
2024 Estimate	1,396	11,551	28,056
2029 Projection	1,762	14,119	33,802
2024-2029 Growth	5.2%	4.4%	4.1%
2024 Med. Home Value	\$336,639	\$315,210	\$309,467
2024 Avg. HH Income	\$94,686	\$86,778	\$84,760

Tommy Pinel, MAI

Managing Director
Condev Realty, LLC
321-221-5715 Direct
tommy@condevfl.com

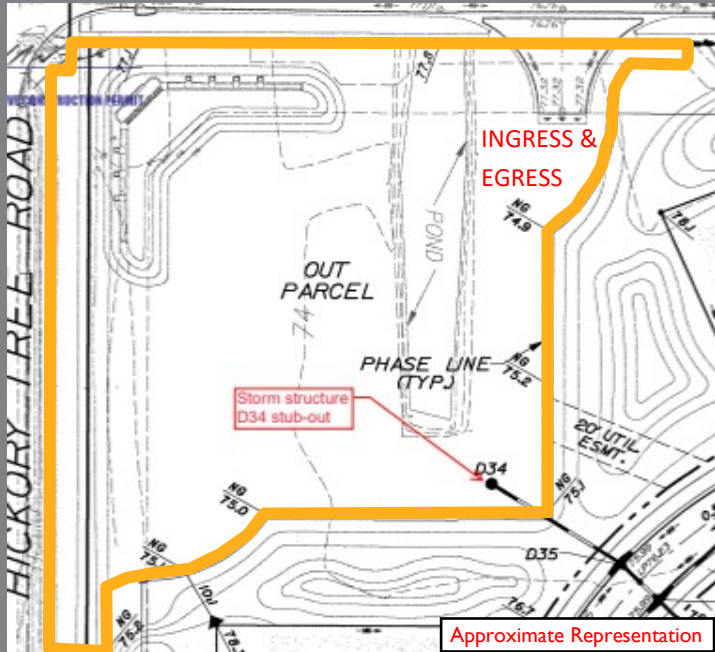


Carlos Mendonca

Associate
Condev Realty, LLC
407-337-6989 Direct
carlosm@condevfl.com

1.36 - Acre Commercial Site

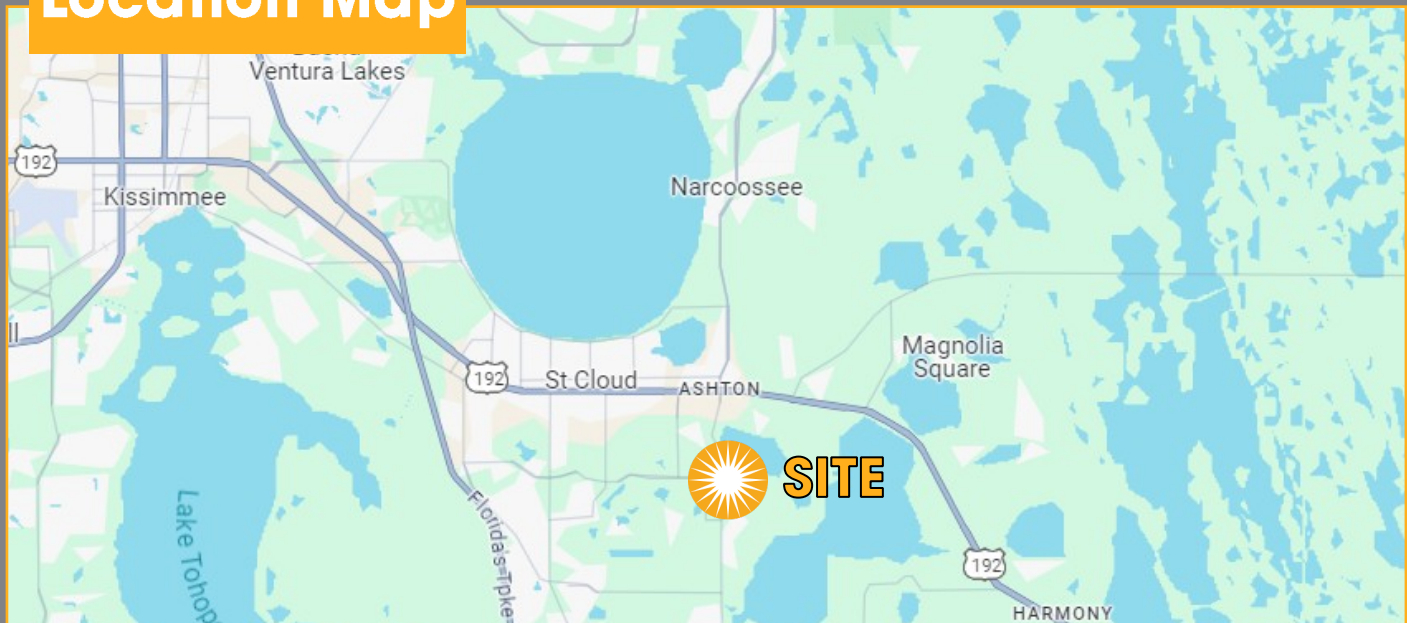
Southeast Corner Hickory Tree Rd & Nolte Rd
In Rapidly Growing Area of St.Cloud, Florida



Property Summary

Address	SE Corner of Hickory Tree Rd & Nolte Rd
County	Osceola
Municipality	Unincorporated
Parcel ID	18-26-31-4950-0001-0640
Location	SE Corner of Hickory Tree Rd & Nolte Rd
Site Size	1.36 Acres
Frontage	300 ft Nolte Road 305 ft Hickory Tree Road
Zoning	CCP, Osceola County
Flood Zone	NA
Topography	Level, Graded

Location Map



Tommy Pinel, MAI

Managing Director
Condev Realty, LLC
321-221-5715 Direct
tommy@condevfl.com

Condev
Realty

Carlos Mendonca

Associate
Condev Realty, LLC
407-337-6989 Direct
carlosm@condevfl.com