

88+/- Acres S. Lapeer Road

Metamora Twp., MI 48455



FOR SALE

Get**Real** *quality*
248.476.3700

LISTED BY:

John Porth

Vice President

jkporth@thomasduke.com

FOR SALE

88+/- Acres S. Lapeer Road

Metamora Twp., MI 48455



Sale Price: \$1,760,000.00

DESCRIPTION

88 Flat Acres just south of the Village of Metamora. This site is located at the corner of Brauer Road and M-24 Highway.

PROPERTY HIGHLIGHTS

- 88 Acres in desirable Oakland County.
- Master Planned for 1 acre lots.
- Build near the beautiful Metamora Golf Club.
- Lapeer Community Schools.

FOR SALE

88+/- Acres S. Lapeer Road

Metamora Twp., MI 48455

BUILDING INFORMATION

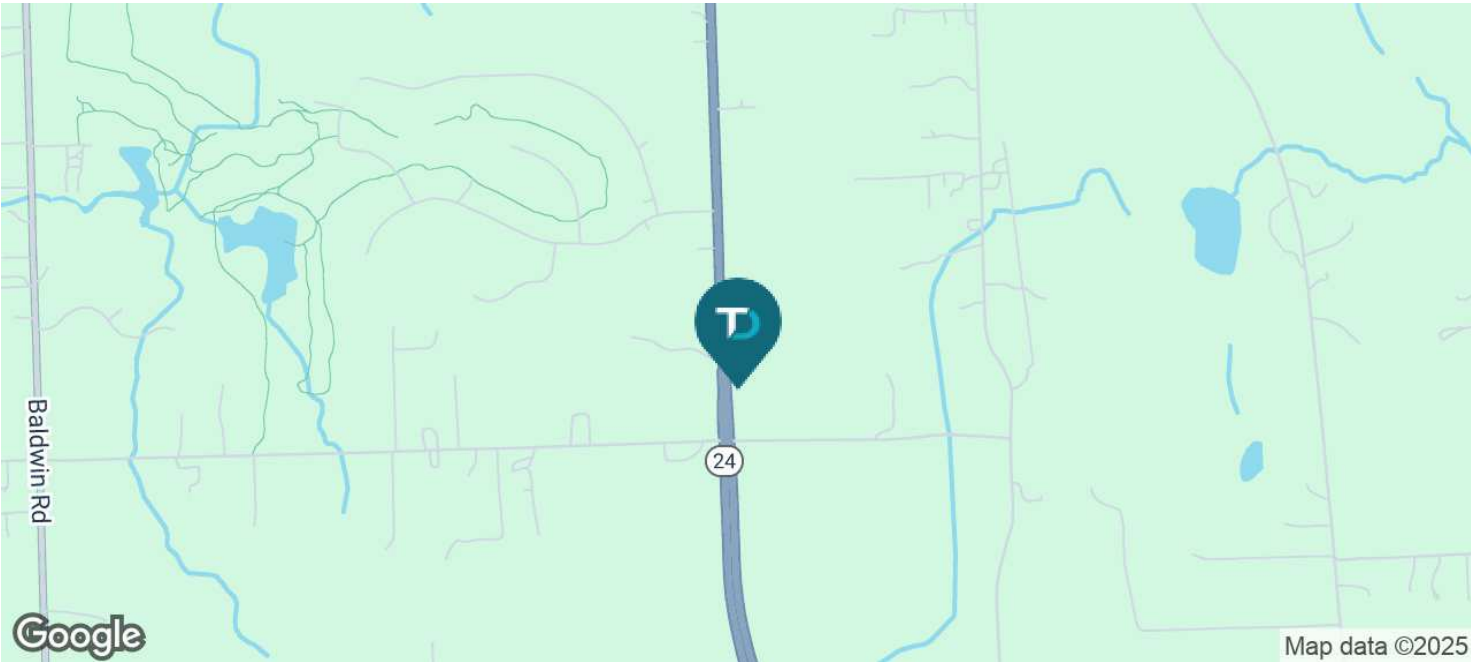
SALE PRICE:	\$1,760,000.00
Price/AC:	\$20,000
Utilities:	Municipal Water & Septic
School District:	Lapeer Community Schools
Taxes:	2024 Winter = \$9,179.66 2025 Summer = \$2,850.38

PROPERTY INFORMATION

Lot Size:	88 Acres
Property Type:	Residential Land
Zoning	Agricultural
Traffic Count:	Lapeer Road = 18,200
Legal Description:	Available upon request.
APN:	015-029-002-10

LOCATION INFORMATION

Located on the east side of M-24 (Lapeer Road), just south of Brocker Road and east of Baldwin Road.



FOR SALE

88+/- Acres S. Lapeer Road

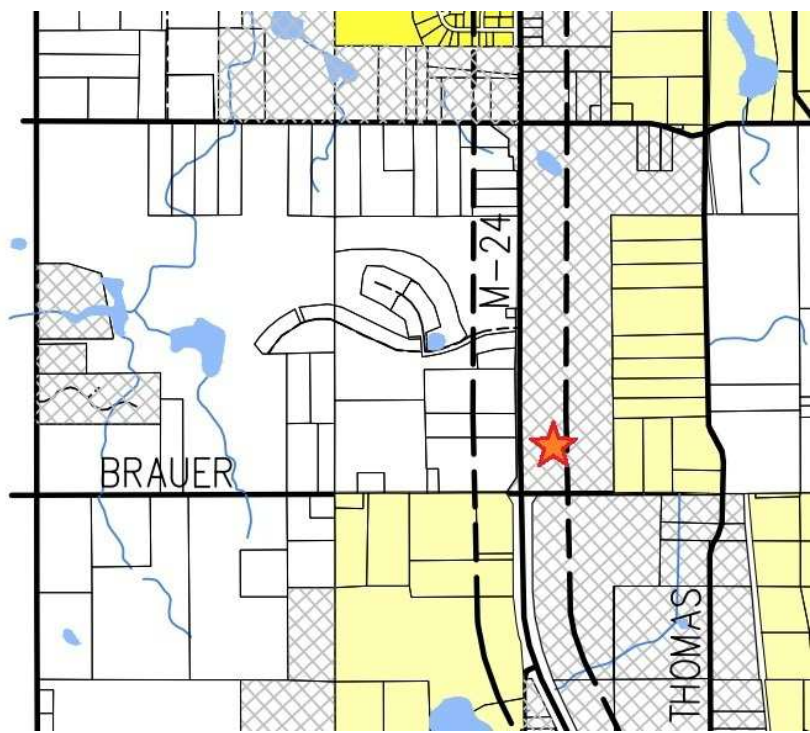
Metamora Twp., MI 48455



FOR SALE

88+/- Acres S. Lapeer Road

Metamora Twp., MI 48455



- A-1 AGRICULTURAL
- A-2 AGRICULTURAL
- R-1 SINGLE FAMILY
- R-2 SINGLE FAMILY
- OSR OPEN SPACE RESIDENTIAL
- RM MULTIPLE FAMILY
- MH MOBILE HOME
- O-1 LOCAL OFFICE
- B-1 LOCAL BUSINESS
- B-2 GENERAL BUSINESS
- M-1 LIGHT MANUFACTURING
- RC RECREATION
- M-24 CORRIDOR ACCESS MANAGEMENT OVERLAY
- TRANSITORY EXTRACTION USE PLANNED UNIT DEVELOPMENT
- VILLAGE OF METAMORA
- PRIVATE ROAD
- UNIMPROVED RIGHT OF WAY

	LOT SIZE (ACRES)	HOUSE SIZE (SQ. FT)
A-1	1	1100
A-2	10	2000
R-1	1	1200
R-2	5	1600
OSR	2.5	1600



FOR SALE

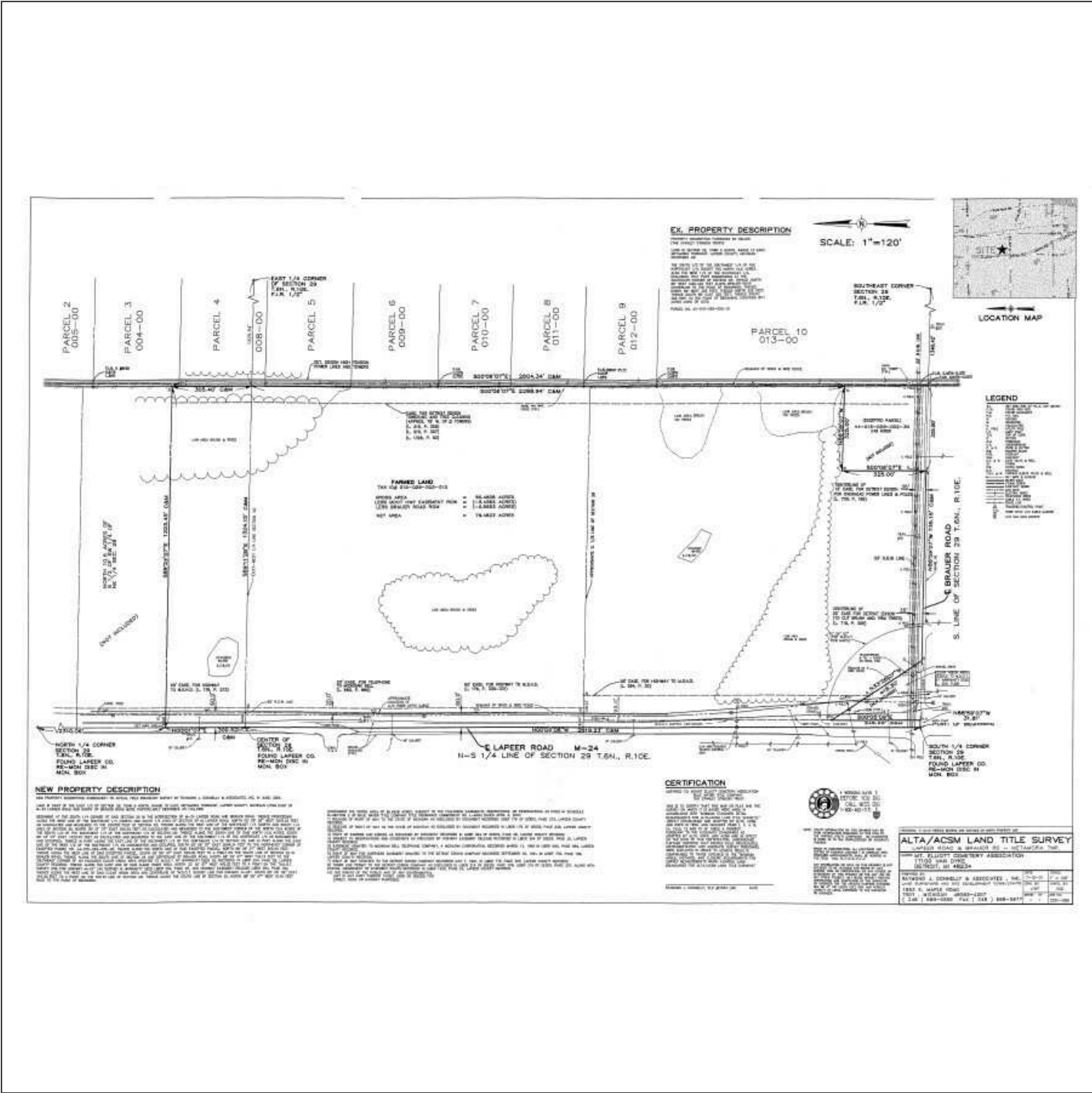
88+/- Acres S. Lapeer Road

Metamora Twp., MI 48455



FOR SALE

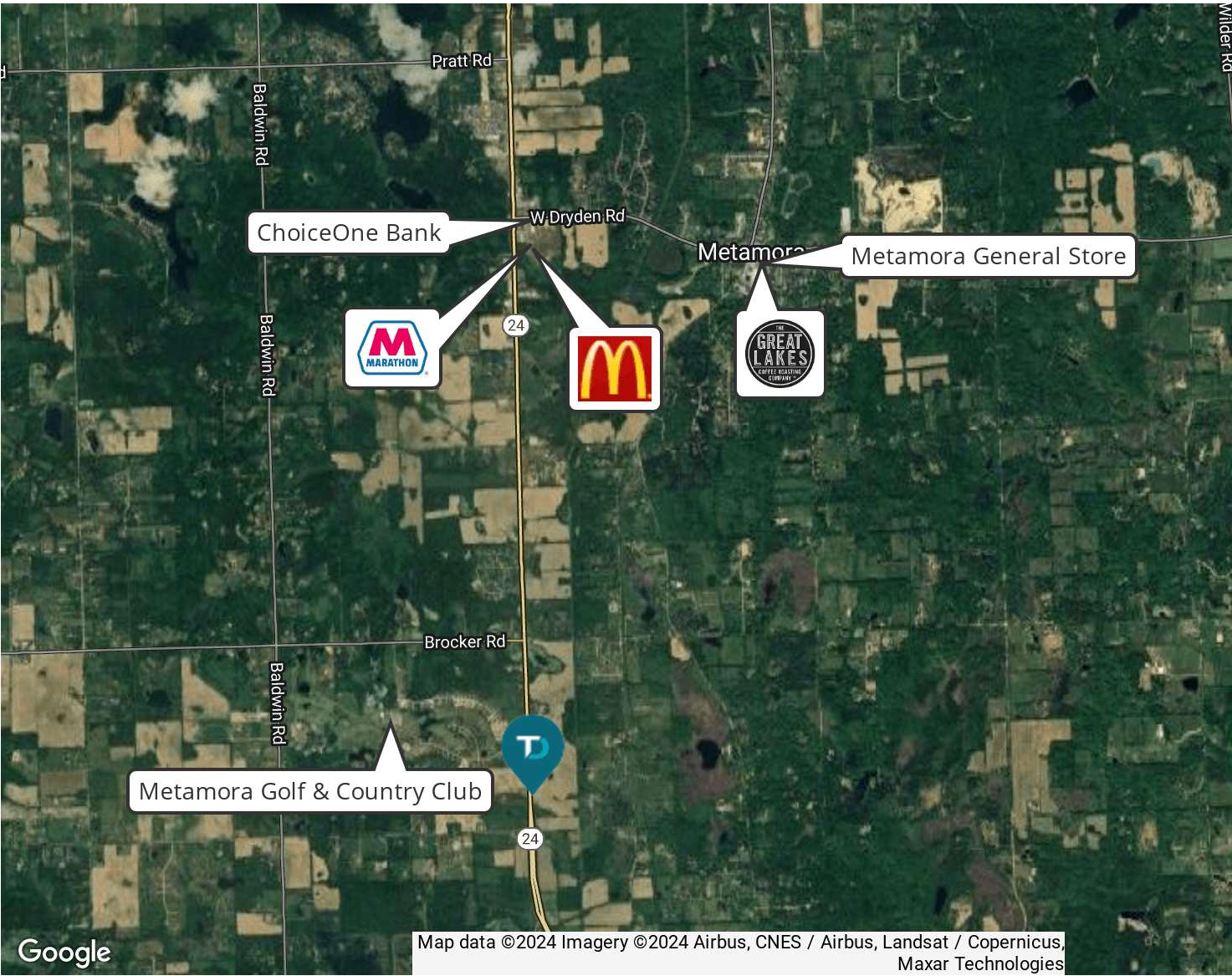
88+/- Acres S. Lapeer Road
88+/- Acres S. Lapeer Road Lapeer, MI 48455



FOR SALE

88+/- Acres S. Lapeer Road

Metamora Twp., MI 48455



DEMOGRAPHIC INFORMATION	1 MILE	5 MILES	10 MILES
Total population	383	15,900	100,801
Median age	39.9	39.6	39.8
Total households	141	5,653	35,855
Average HH income	\$84,709	\$86,597	\$86,061
Average house value	\$301,408	\$272,607	\$248,718



FOR SALE

88+/- Acres S. Lapeer Road

Metamora Twp., MI 48455

