



Oakbrook Business Plaza

8404 83rd Ave SW, Lakewood, WA 98498

For Lease Now! – Excellent, in-line location 1,120sf former salon space with an open floor plan, and plenty of plumbing and natural light. There is a lighted box on the building fascia for tenant signage, potential for monument signage, and the parking is ample. Oakbrook Business Plaza is located just off Steilacoom Blvd. at 83rd Ave, adjacent from Starbucks. Join great tenants Weeks Farmers Insurance, Hyper Sonic Games & Toys, Grooming By Lou, Quality Dentistry and more! Asking lease rate is \$16/sf/yr plus NNN, which includes water, electric, and garbage.

Property Overview

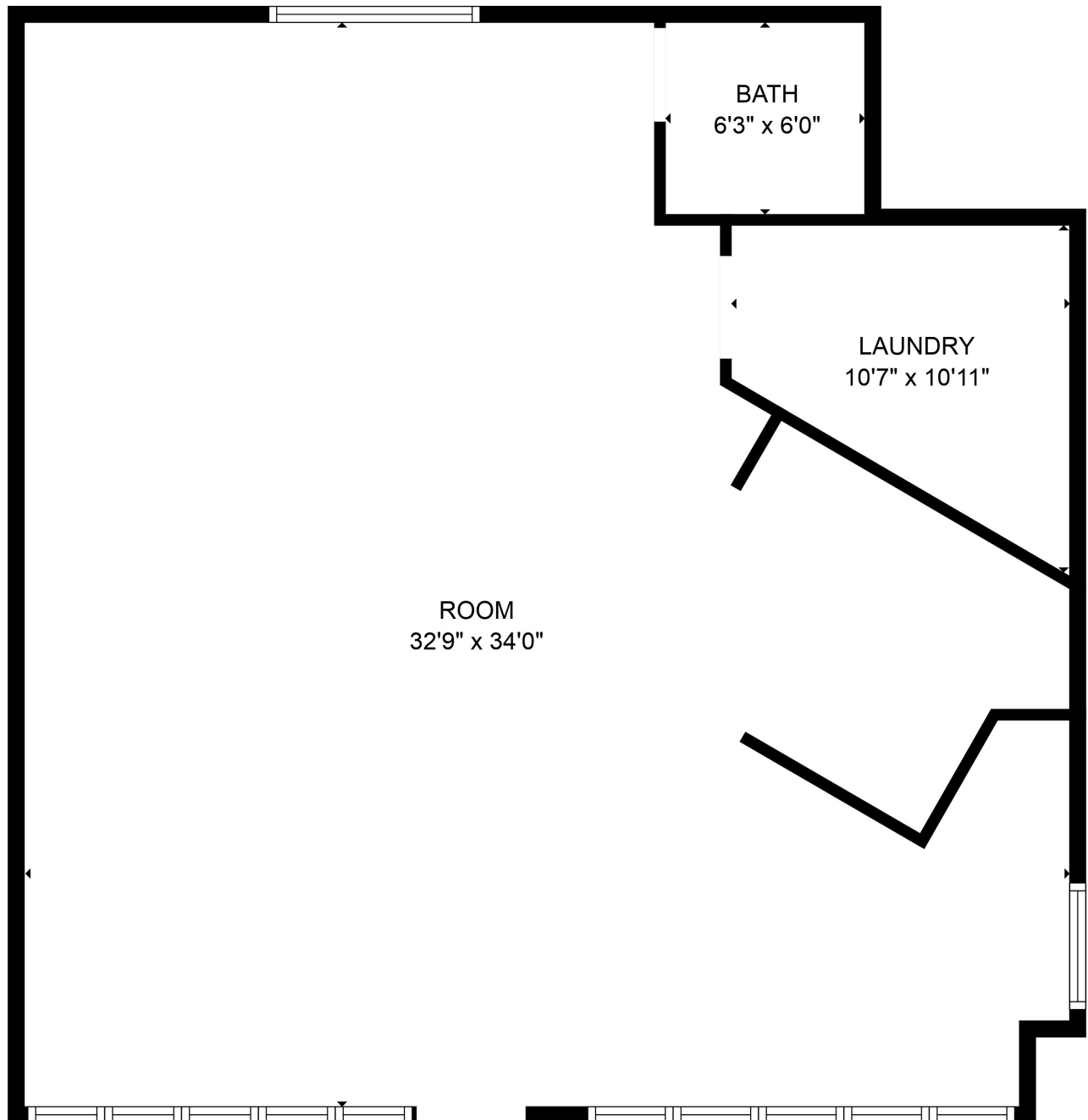
- Mostly open floorplan
- In-suite restroom
- Lighted Box Signage
- Covered Walkways
- Nice Retail or Space
- Ample Parking
- Former Salon Space: 1,120 SF
- Asking Rent: \$16.95/sf/yr
- \$7.49/sf/yr NNN includes power

DISCLAIMER: The above information has been secured from sources believed to be reliable, however, no representations are made to its accuracy. Prospective tenants or buyers should consult their professional advisors and conduct their own independent investigation. Properties are subject to change in price and/or availability without notice.





FLOOR PLAN - SUITE G



FLOOR PLAN CREATED BY CUBICASA APP. MEASUREMENTS DEEMED HIGHLY RELIABLE BUT NOT GUARANTEED.





AERIAL PHOTO



11120 Gravelly Lake Dr SW Ste 2
Lakewood, Washington 98499
johnson-commercial.com

Margot Johnson

margot@johnson-commercial.com
(253) 209-9998