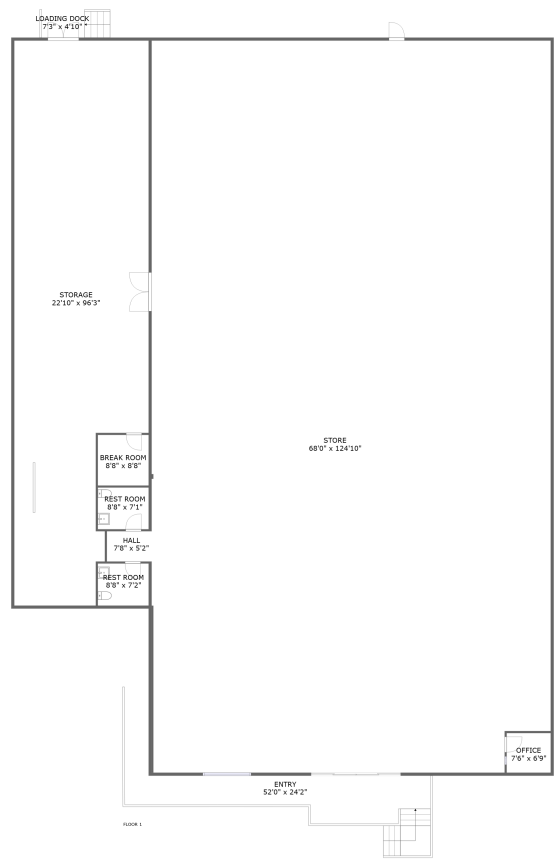


Home report

4910 Wellington Avenue, Ventnor City, Atlantic County, New Jersey, United States, 08406



Total Area: 9239 sq. ft

Floor 1: 9239 sq. ft

Excluded: Storage 1949 sq. ft, Loading dock 56 sq. ft, Walls: 218 sq. ft

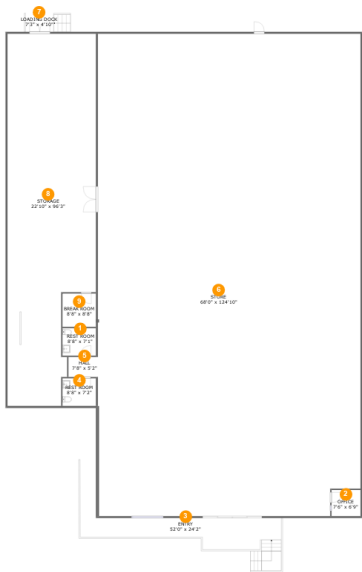
Property summary

 1 Floors

 2 Half baths

Home report

4910 Wellington Avenue, Ventnor City, Atlantic County, New Jersey, United States, 08406



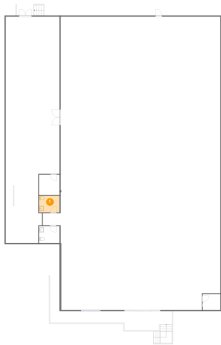
Room dimensions

Floor 1 Total:9239sqft Excluded: 2005sqft

#		Max Dimensions	sqft	Included
1	Rest Room	8'8" x 7'1"	62 sq. ft	Yes
2	Office	7'6" x 6'9"	51 sq. ft	Yes
3	Entry	52'0" x 24'2"	447 sq. ft	Yes
4	Rest Room	8'8" x 7'2"	62 sq. ft	Yes
5	Hall	7'8" x 5'2"	39 sq. ft	Yes
6	Store	68'0" x 124'10"	8431 sq. ft	Yes
7	Loading Dock	7'3" x 4'10"	56 sq. ft	No
8	Storage	22'10" x 96'3"	1949 sq. ft	No
9	Break Room	8'8" x 8'8"	75 sq. ft	Yes

4910 Wellington Avenue, Ventnor City, Atlantic County, New Jersey, United States, 08406

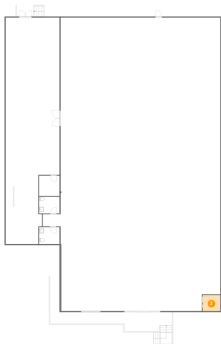
1 Floor 1 - Rest Room



Max Dimensions: 8'8" x 7'1"
Calculated Area: 62 sq. ft
Included: Yes

Heated: Yes
Finished: Yes
Enclosed: Yes
Contiguous: Yes
Permitted: Yes
Wet space: Yes
Addition: No
Conversion: No

2 Floor 1 - Office

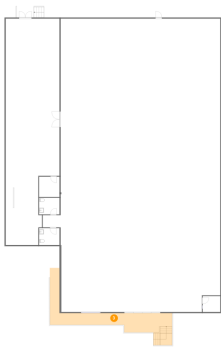


Max Dimensions: 7'6" x 6'9"
Calculated Area: 51 sq. ft
Included: Yes

Heated: Yes
Finished: Yes
Enclosed: Yes
Contiguous: Yes
Permitted: Yes
Wet space: No
Addition: No
Conversion: No

4910 Wellington Avenue, Ventnor City, Atlantic County, New Jersey, United States, 08406

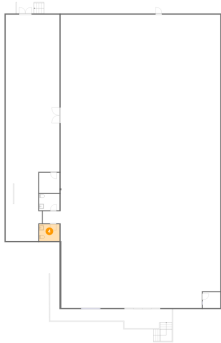
3 Floor 1 - Entry



Max Dimensions: 52'0" x 24'2"
Calculated Area: 447 sq. ft
Included: Yes

Heated: Yes
Finished: Yes
Enclosed: Yes
Contiguous: Yes
Permitted: Yes
Wet space: No
Addition: No
Conversion: No

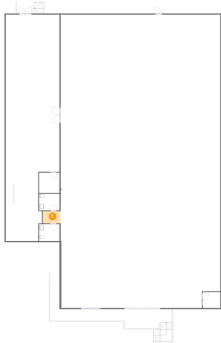
4 Floor 1 - Rest Room



Max Dimensions: 8'8" x 7'2"
Calculated Area: 62 sq. ft
Included: Yes

Heated: Yes
Finished: Yes
Enclosed: Yes
Contiguous: Yes
Permitted: Yes
Wet space: Yes
Addition: No
Conversion: No

5 Floor 1 - Hall

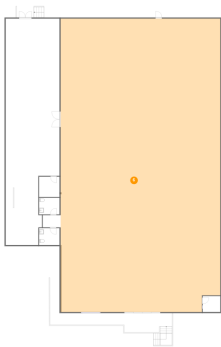


Max Dimensions: 7'8" x 5'2"
Calculated Area: 39 sq. ft
Included: Yes

Heated: Yes
Finished: Yes
Enclosed: Yes
Contiguous: Yes
Permitted: Yes
Wet space: No
Addition: No
Conversion: No

4910 Wellington Avenue, Ventnor City, Atlantic County, New Jersey, United States, 08406

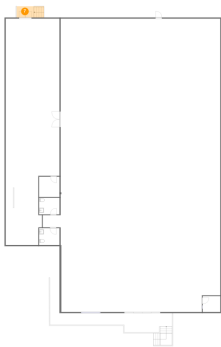
6 Floor 1 - Store



Max Dimensions: 68'0" x 124'10"
Calculated Area: 8431 sq. ft
Included: Yes

Heated: Yes
Finished: Yes
Enclosed: Yes
Contiguous: Yes
Permitted: Yes
Wet space: No
Addition: No
Conversion: No

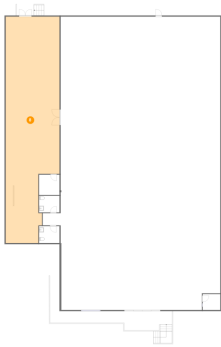
7 Floor 1 - Loading Dock



Max Dimensions: 7'3" x 4'10"
Calculated Area: 56 sq. ft
Included: No

Heated: No
Finished: Yes
Enclosed: No
Contiguous: Yes
Permitted: Yes
Wet space: No
Addition: No
Conversion: No

8 Floor 1 - Storage

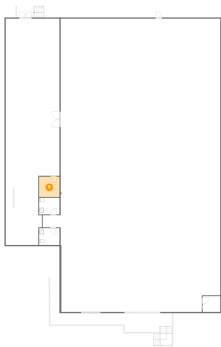


Max Dimensions: 22'10" x 96'3"
Calculated Area: 1949 sq. ft
Included: No

Heated: No
Finished: No
Enclosed: No
Contiguous: No
Permitted: Yes
Wet space: No
Addition: No
Conversion: No

4910 Wellington Avenue, Ventnor City, Atlantic County, New Jersey, United States, 08406

9 Floor 1 - Break Room



Max Dimensions: 8'8" x 8'8"
Calculated Area: 75 sq. ft
Included: No

Heated: Yes
Finished: Yes
Enclosed: Yes
Contiguous: No
Permitted: Yes
Wet space: No
Addition: No
Conversion: No