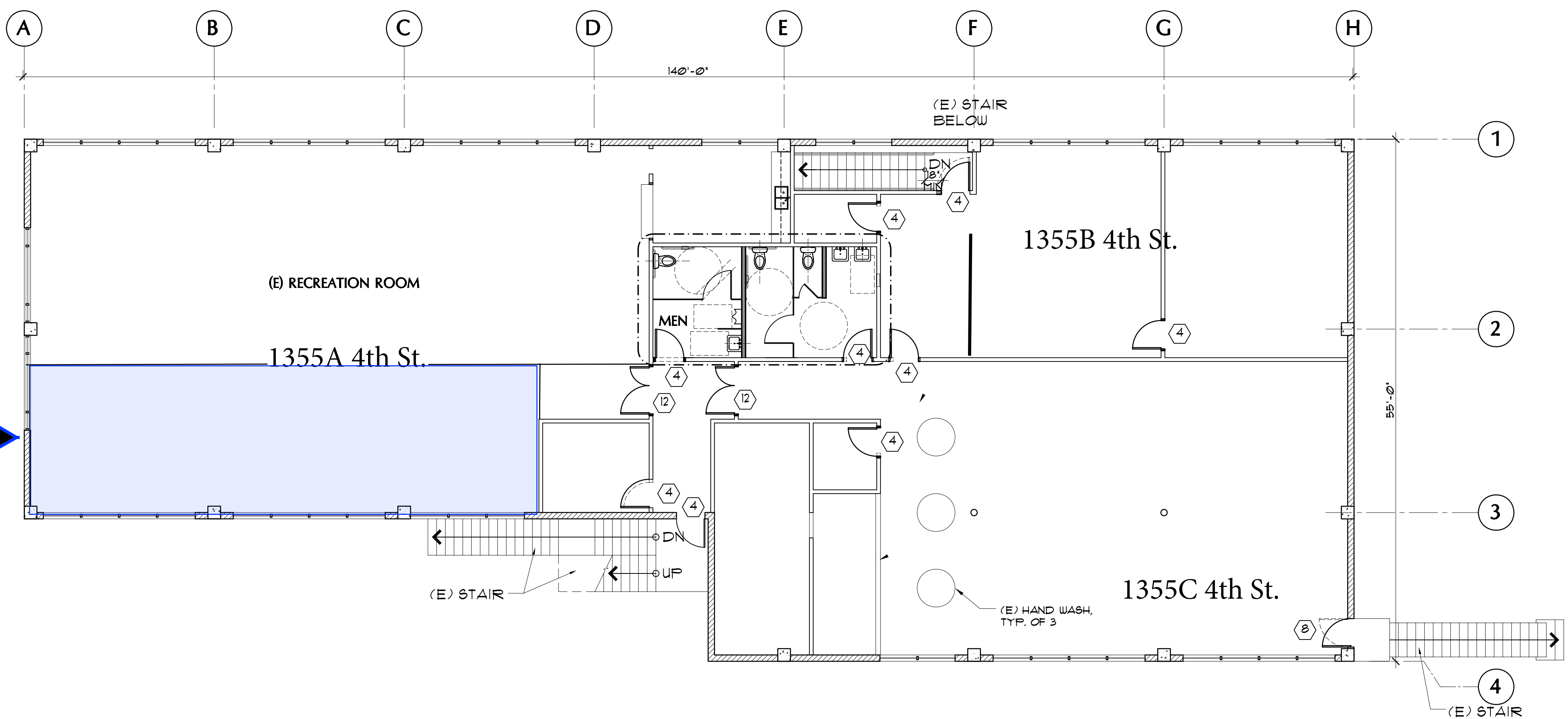


Exhibit A

PREMISES  
South/Left Unit



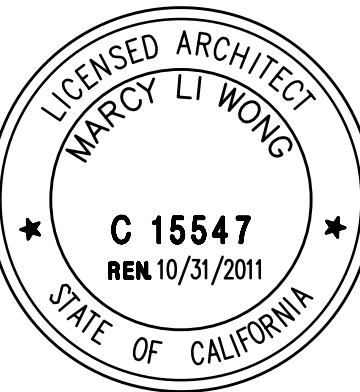
1 SECOND FLOOR PLAN - BLDG. 39 (CLUSTER D)

REVISIONS

10-15-09 TOILET  
ROOMS REVISED

MARCY WONG  
DONN LOGAN  
ARCHITECTS

800 Bancroft Way  
Berkeley, CA 94710  
tel: (510) 843-0916  
fax: (510) 843-0949  
office@wonglogan.com



Developer:

Orton  
Development, Inc.

1475 Powell St. #101  
Emeryville, CA 94608  
tel: (510) 734-7605

FLINT INK - CLUSTER D  
SHELL REPAIR & ADA ACCESS IMPROVEMENTS  
750 GILMAN APN 59 2347 01  
BERKELEY, CA

PERMIT

SECOND  
FLOOR  
PLAN  
BLD

DATE: 9 SEPT., 2009

JOB: 0906

DRAWN: KR, KS, RM, JT

CLUSTER D