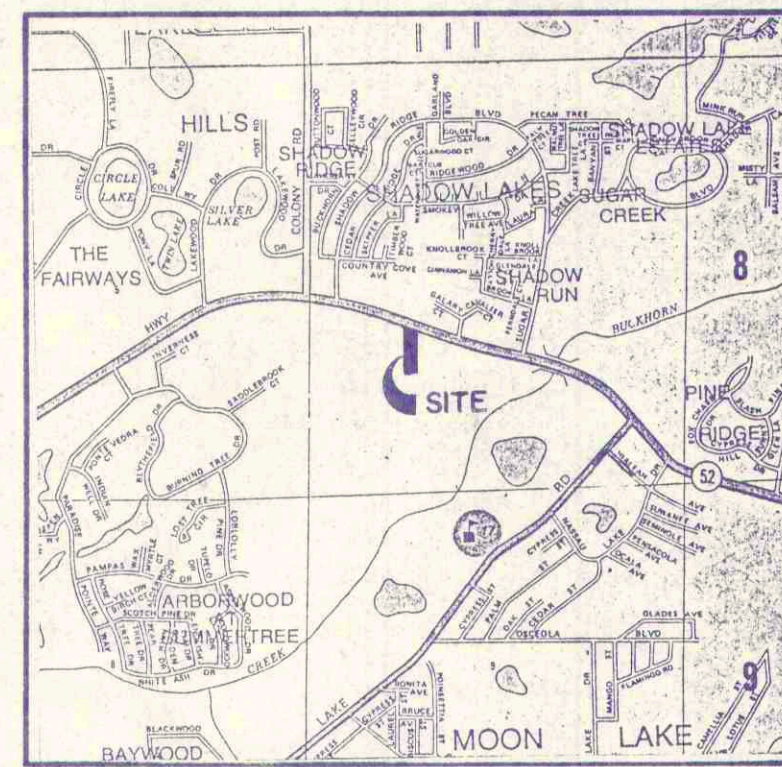
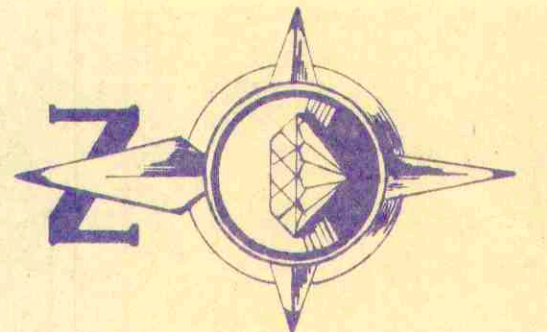


SEC. 4 TWP. 25S. RNG. 17E. SCALE: 1" = 30'

NOTE: BEARING MERIDIAN ESTABLISHED FROM ROAD RIGHT OF WAY LINE IN REFERENCE TO DATA GIVEN BY LEGAL DESCRIPTION.

LEGEND

- FOUND CONCRETE MONUMENT
- FOUND 5/8" IRON PIN
- SET 5/8" IRON PIN
- FOUND IRON PIPE
- OR (7.0) INDICATES EXISTING ELEVATIONS REFERENCED TO N.G.V.D.
- 7.0 INDICATES PROPOSED ELEVATIONS



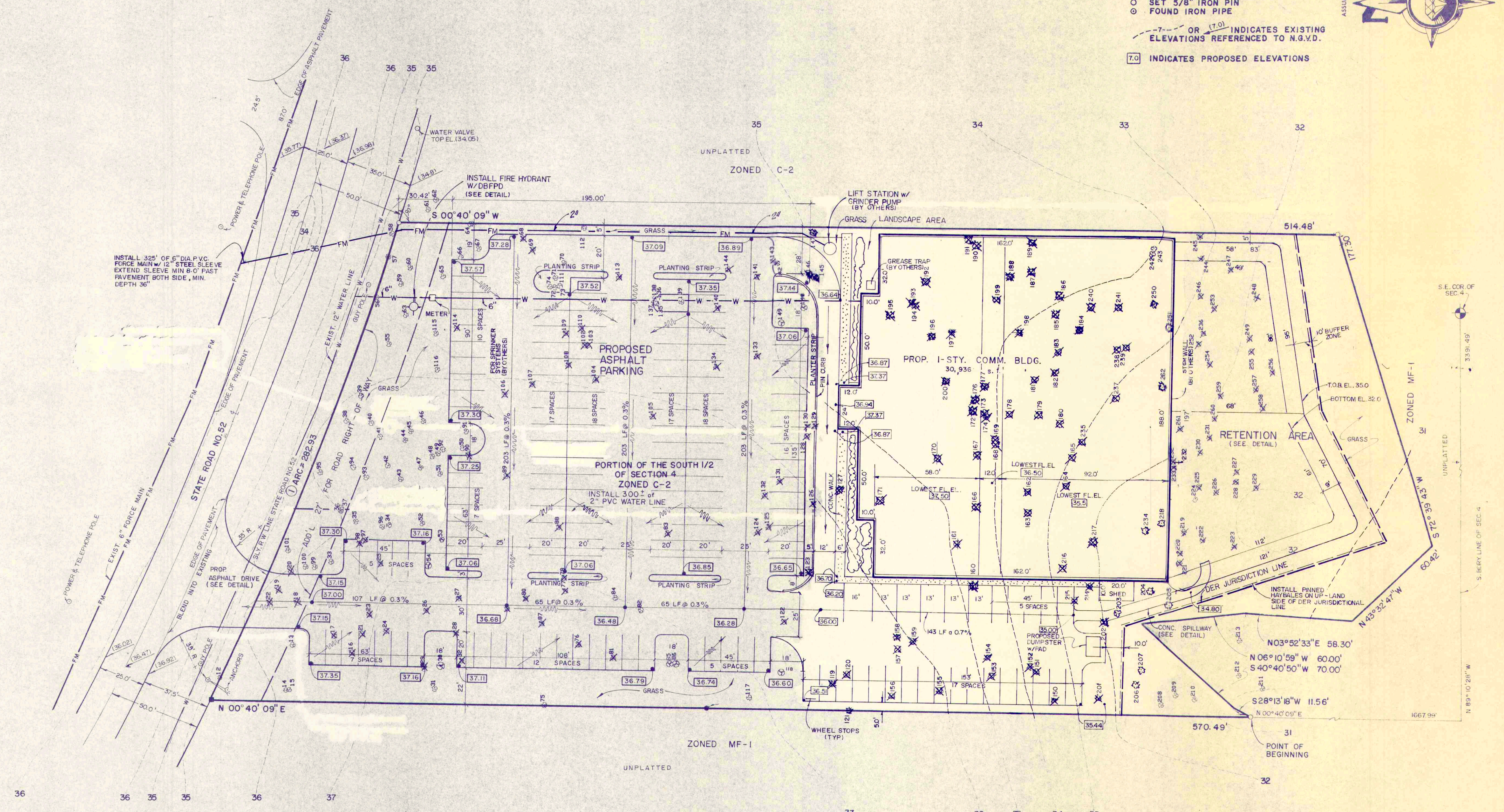
SITE LOCATION MAP

TREE SCHEDULE

NO.	TYPE	SIZE	NO.	TYPE	SIZE	NO.	TYPE	SIZE	NO.	TYPE	SIZE
12	OAK	8 1/2"	13	PINE	10"	22	OAK	12"	31	OAK	12"
13	OAK	8 1/2"	14	OAK	10"	23	OAK	12"	32	OAK	12"
14	OAK	8 1/2"	15	OAK	10"	24	OAK	12"	33	OAK	12"
15	OAK	8 1/2"	16	OAK	10"	25	OAK	12"	34	OAK	12"
16	OAK	8 1/2"	17	OAK	10"	26	OAK	12"	35	OAK	12"
17	OAK	8 1/2"	18	OAK	10"	27	OAK	12"	36	OAK	12"
18	OAK	8 1/2"	19	OAK	10"	28	OAK	12"	37	OAK	12"
19	OAK	8 1/2"	20	OAK	10"	29	OAK	12"	38	OAK	12"
20	OAK	8 1/2"	21	OAK	10"	30	OAK	12"	39	OAK	12"
21	OAK	8 1/2"	22	OAK	10"	31	OAK	12"	40	OAK	12"
22	OAK	8 1/2"	23	OAK	10"	32	OAK	12"	41	OAK	12"
23	OAK	8 1/2"	24	OAK	10"	33	OAK	12"	42	OAK	12"
24	OAK	8 1/2"	25	OAK	10"	34	OAK	12"	43	OAK	12"
25	OAK	8 1/2"	26	OAK	10"	35	OAK	12"	44	OAK	12"
26	OAK	8 1/2"	27	OAK	10"	36	OAK	12"	45	OAK	12"
27	OAK	8 1/2"	28	OAK	10"	37	OAK	12"	46	OAK	12"
28	OAK	8 1/2"	29	OAK	10"	38	OAK	12"	47	OAK	12"
29	OAK	8 1/2"	30	OAK	10"	39	OAK	12"	48	OAK	12"
30	OAK	8 1/2"	31	OAK	10"	40	OAK	12"	49	OAK	12"
31	OAK	8 1/2"	32	OAK	10"	41	OAK	12"	50	OAK	12"
32	OAK	8 1/2"	33	OAK	10"	42	OAK	12"	51	OAK	12"
33	OAK	8 1/2"	34	OAK	10"	43	OAK	12"	52	OAK	12"
34	OAK	8 1/2"	35	OAK	10"	44	OAK	12"	53	OAK	12"
35	OAK	8 1/2"	36	OAK	10"	45	OAK	12"	54	OAK	12"
36	OAK	8 1/2"	37	OAK	10"	46	OAK	12"	55	OAK	12"
37	OAK	8 1/2"	38	OAK	10"	47	OAK	12"	56	OAK	12"
38	OAK	8 1/2"	39	OAK	10"	48	OAK	12"	57	OAK	12"
39	OAK	8 1/2"	40	OAK	10"	49	OAK	12"	58	OAK	12"
40	OAK	8 1/2"	41	OAK	10"	50	OAK	12"	59	OAK	12"
41	OAK	8 1/2"	42	OAK	10"	51	OAK	12"	60	OAK	12"
42	OAK	8 1/2"	43	OAK	10"	52	OAK	12"	61	OAK	12"
43	OAK	8 1/2"	44	OAK	10"	53	OAK	12"	62	OAK	12"
44	OAK	8 1/2"	45	OAK	10"	54	OAK	12"	63	OAK	12"
45	OAK	8 1/2"	46	OAK	10"	55	OAK	12"	64	OAK	12"
46	OAK	8 1/2"	47	OAK	10"	56	OAK	12"	65	OAK	12"
47	OAK	8 1/2"	48	OAK	10"	57	OAK	12"	66	OAK	12"
48	OAK	8 1/2"	49	OAK	10"	58	OAK	12"	67	OAK	12"
49	OAK	8 1/2"	50	OAK	10"	59	OAK	12"	68	OAK	12"
50	OAK	8 1/2"	51	OAK	10"	60	OAK	12"	69	OAK	12"
51	OAK	8 1/2"	52	OAK	10"	61	OAK	12"	70	OAK	12"
52	OAK	8 1/2"	53	OAK	10"	62	OAK	12"	71	OAK	12"
53	OAK	8 1/2"	54	OAK	10"	63	OAK	12"	72	OAK	12"
54	OAK	8 1/2"	55	OAK	10"	64	OAK	12"	73	OAK	12"
55	OAK	8 1/2"	56	OAK	10"	65	OAK	12"	74	OAK	12"
56	OAK	8 1/2"	57	OAK	10"	66	OAK	12"	75	OAK	12"
57	OAK	8 1/2"	58	OAK	10"	67	OAK	12"	76	OAK	12"
58	OAK	8 1/2"	59	OAK	10"	68	OAK	12"	77	OAK	12"
59	OAK	8 1/2"	60	OAK	10"	69	OAK	12"	78	OAK	12"
60	OAK	8 1/2"	61	OAK	10"	70	OAK	12"	79	OAK	12"
61	OAK	8 1/2"	62	OAK	10"	71	OAK	12"	80	OAK	12"
62	OAK	8 1/2"	63	OAK	10"	72	OAK	12"	81	OAK	12"
63	OAK	8 1/2"	64	OAK	10"	73	OAK	12"	82	OAK	12"
64	OAK	8 1/2"	65	OAK	10"	74	OAK	12"			
65	OAK	8 1/2"	66	OAK	10"	75	OAK	12"			
66	OAK	8 1/2"	67	OAK	10"	76	OAK	12"			
67	OAK	8 1/2"	68	OAK	10"	77	OAK	12"			
68	OAK	8 1/2"	69	OAK	10"	78	OAK	12"			
69	OAK	8 1/2"	70	OAK	10"	79	OAK	12"			
70	OAK	8 1/2"	71	OAK	10"	80	OAK	12"			
71	OAK	8 1/2"	72	OAK	10"	81	OAK	12"			
72	OAK	8 1/2"	73	OAK	10"	82	OAK	12"			
73	OAK	8 1/2"	74	OAK	10"						
74	OAK	8 1/2"	75	OAK	10"						
75	OAK	8 1/2"	76	OAK	10"						
76	OAK	8 1/2"	77	OAK	10"						
77	OAK	8 1/2"	78	OAK	10"						
78	OAK	8 1/2"	79	OAK	10"						
79	OAK	8 1/2"	80	OAK	10"						
80	OAK	8 1/2"	81	OAK	10"						
81	OAK	8 1/2"	82	OAK	10"						

CURVE DATA

NO. 1
 RADIUS: 1959.86'
 ARC: 282.93'
 CHORD: 282.69'
 CH. BEARING: S 68° 57' 29.5" E



DESCRIPTION: A PORTION OF THE SOUTH 1/2 OF SECTION 4, TOWNSHIP 25 SOUTH, RANGE 17 EAST, PASCO COUNTY, FLORIDA, MORE PARTICULARLY DESCRIBED AS FOLLOWS: COMMENCE AT THE SOUTHWEST CORNER OF SAID SECTION 4; THENCE NORTH 89°10'28" WEST, 3391.49 FEET ALONG THE SOUTH BOUNDARY LINE OF SAID SECTION 4; THENCE NORTH 00°40'09" EAST, 1667.99 FEET TO THE POINT OF BEGINNING; CONTINUE THENCE NORTH 00°40'09" EAST, 570.49 FEET TO THE SOUTHERLY RIGHT-OF-WAY OF STATE ROAD NO. 52; THENCE RUN ALONG SAID RIGHT-OF-WAY, 282.93 FEET ALONG THE ARC OF A 1959.86 FOOT RADIUS CURVE CONCAVE TO THE NORTHEAST, SUBTENDED BY A CHORD DISTANCE OF 282.69 FEET WHICH BEARS SOUTH 68°57'29.5" EAST; THENCE SOUTH 00°40'09" WEST, 514.48 FEET; THENCE SOUTH 72°39'43" WEST, 177.30 FEET; THENCE NORTH 43°32'47" WEST, 60.42 FEET; THENCE NORTH 03°52'33" EAST, 58.30 FEET; THENCE NORTH 06°10'59" WEST, 60.00 FEET; THENCE SOUTH 40°40'50" WEST, 70.00 FEET; THENCE SOUTH 28°13'18" WEST, 11.56 FEET TO THE POINT OF BEGINNING.

CONTAINING 3.468 ACRES, MORE OR LESS.

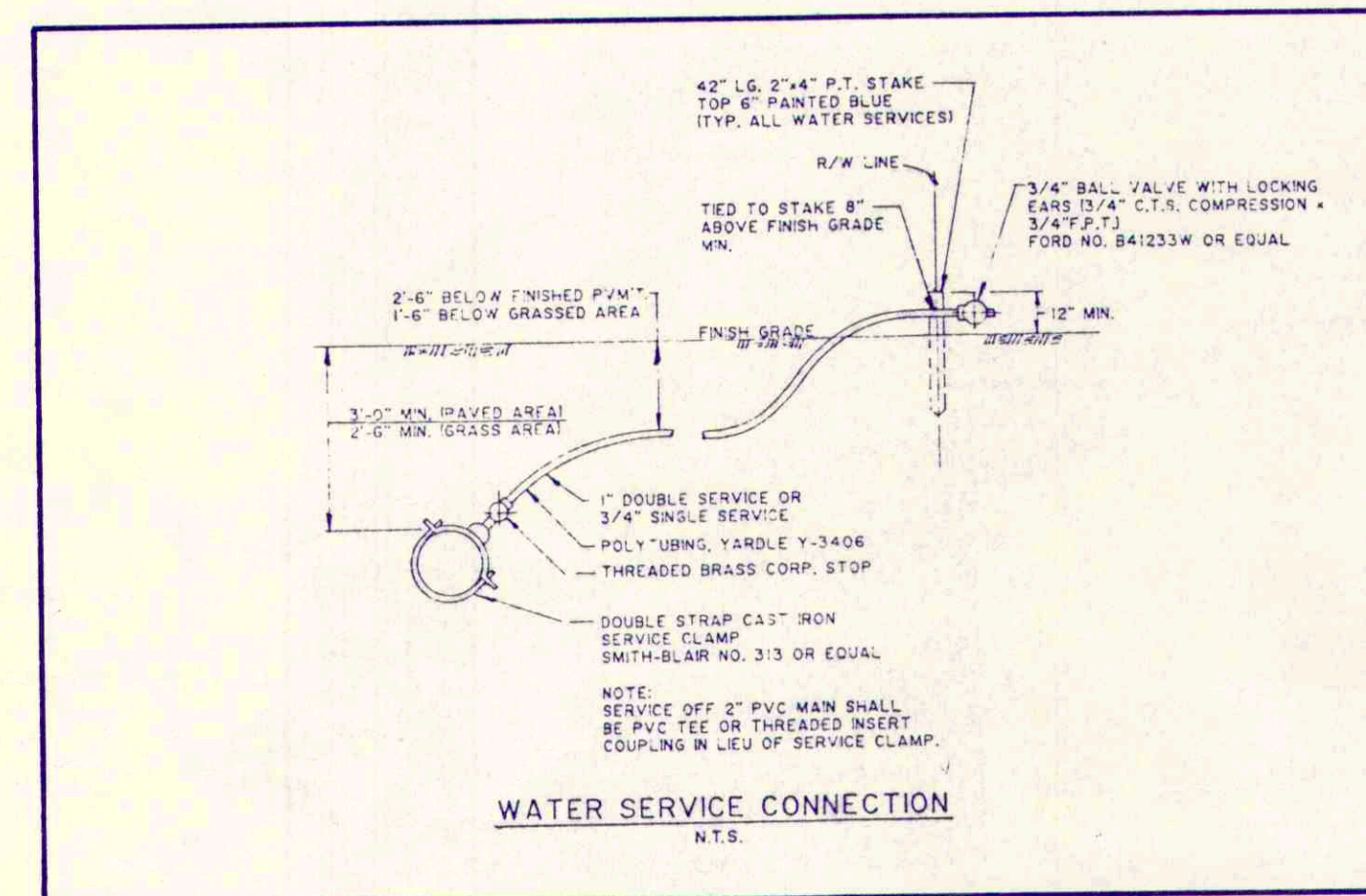
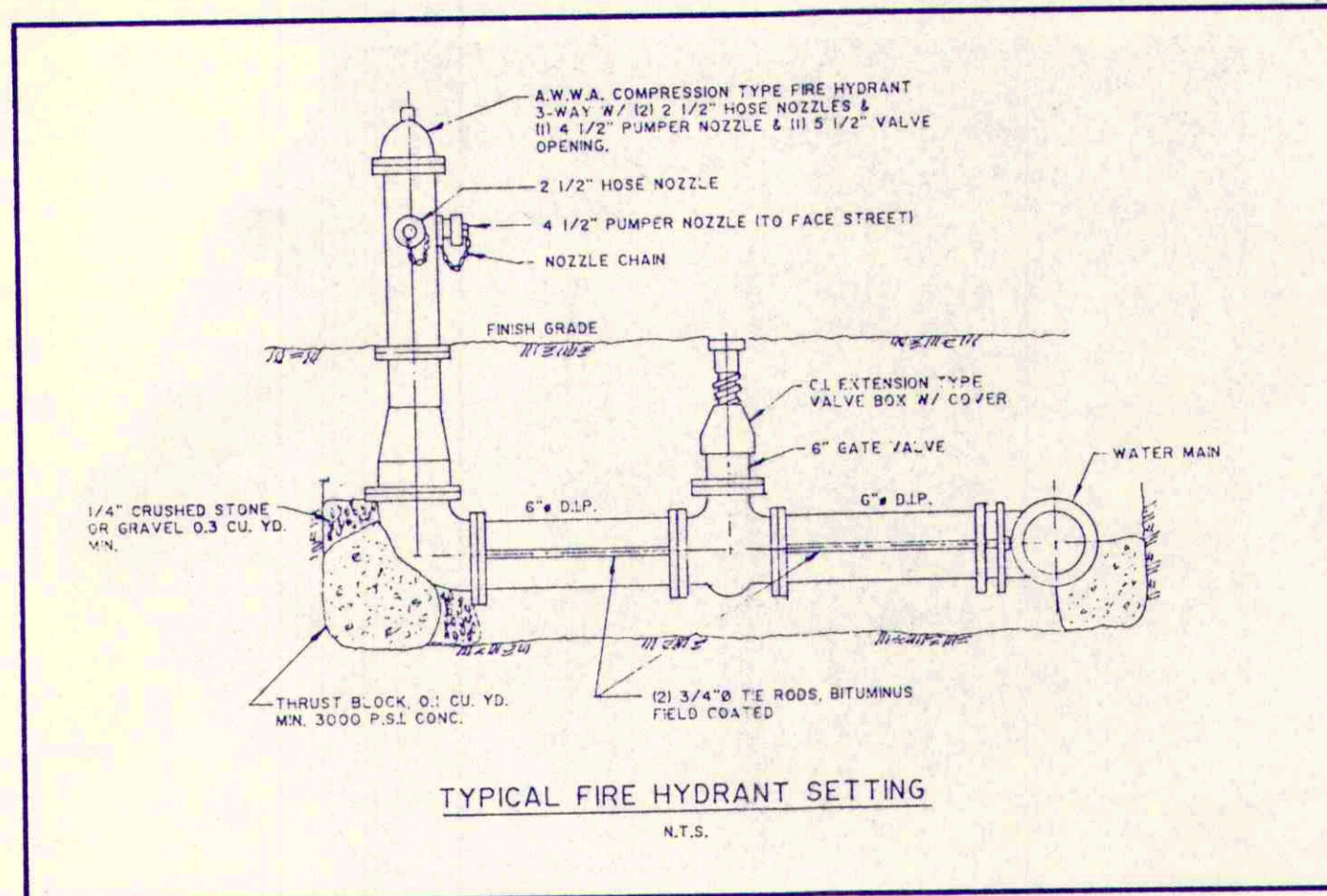
NO.	BY	DATE	REVISIONS
1	LPK	8/88	REVISION TO SITE PLAN

GLOBAL ENGINEERING & MAPPING COMPANY, INC.
 SURVEYORS ENGINEERS LAND PLANNERS
 P.O. BOX 1162 PH. 848-8900 NEW PORT RICHEY, FLORIDA 34656

SITE DEVELOPMENT PLAN
 APCO BUILDING SYSTEMS
 120 E. STATE STREET, SUITE 101
 OLDSMAR, FL 34677 (813) 855-1287

SCALE: 1" = 30' DRAWN BY: LPK, JRB, TLB PROJECT NO: 88-1048
 DATE: 10 JUNE 1988 CHECKED BY: SHEET 1 OF 2 SHEETS

ENGINEERS NO. **D-1298**



TREE REQUIREMENTS

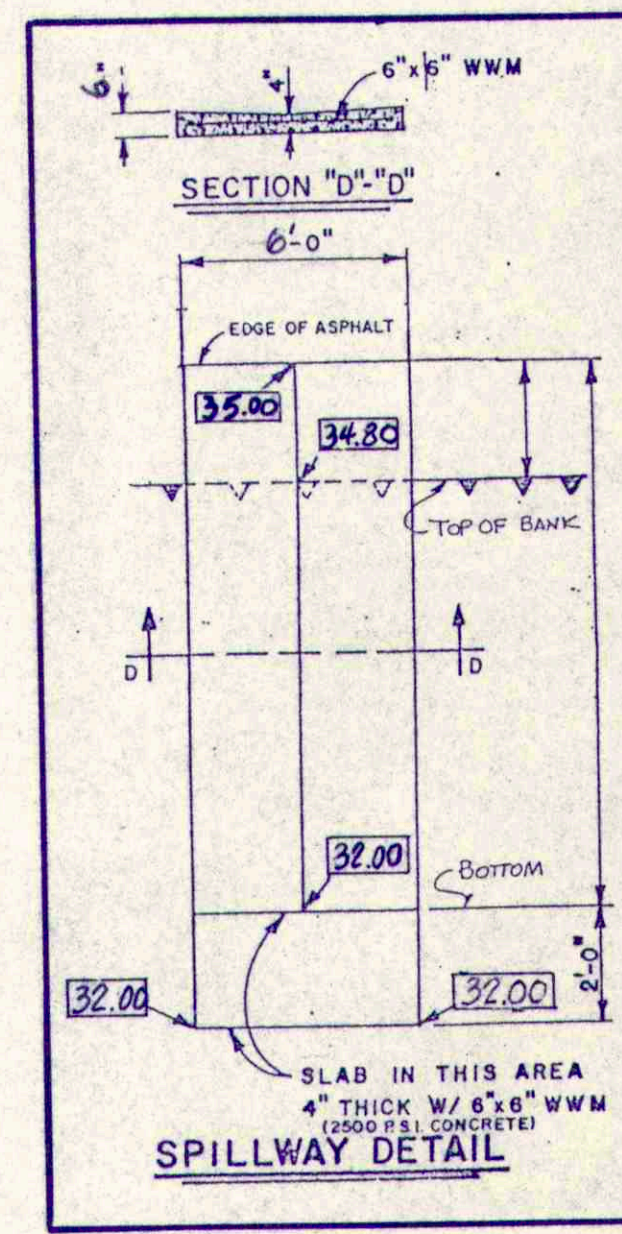
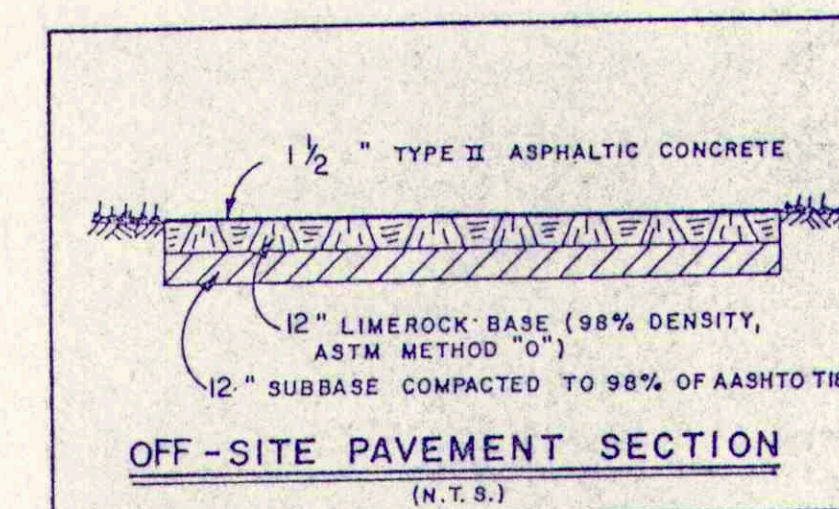
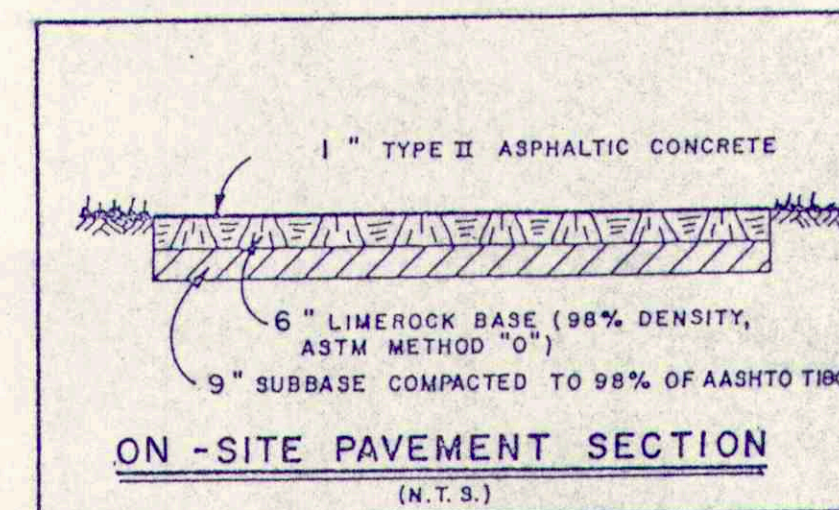
- TOTAL TREES GREATER THAN 18" DBH: 3 TREES
- TOTAL ALL OTHER TREES (EXCEPT THOSE LESS THAN 4") : 243 TREES
- TOTAL SITE ACREAGE: 3.46 ACRES
- TREE TOTAL PER ACRE: 71 TREES
- MAXIMUM PERCENTAGE OF TREE REMOVAL PERMITTED (SEE TABLE BELOW) 75% OF 246 TREE TOTAL: 184.5 TREES PERMITTED TO BE REMOVED
- PROPOSED REMOVAL OF TREES GREATER THAN 18" DBH: 1 TREES
- LOCATE ALL TREES GREATER THAN 18" DBH ON SITE PLAN AND DESIGNATE THOSE TO BE REMOVED: TREES
- PROPOSED REMOVAL OF ALL OTHER TREES EXCEPT ITEM #6: 163 TREES
- PROPOSED TREE REMOVAL TOTAL: 164 TREES
- TREE REMOVAL TOTAL OVER PERMITTED MAXIMUM: -0 TREES
- TOTAL NUMBER OF INCHES OF TREES TO BE REPLACED: -0 INCHES

TABLE

AVERAGE NUMBER OF TREES PER ACRE OF DEVELOPMENT	PERCENTAGE ALLOWED TO BE REMOVED
ABOVE 40	75
20-40	50
10-19	25
LESS THAN 10	NONE UNLESS WITHIN 5' OF PROPOSED STRUCTURE OR IMPROVEMENTS.

TREE REPLACEMENT LOCATION

SHOWN ON SITE PLAN:
 WITHIN SITE ACREAGE, LANDSCAPING, BUFFERING.
 OTHER: N/A



DRAINAGE CALCULATIONS

TOTAL SITE 3.468 Acres = 151,066 S.F.

PRE-DEVELOPMENT CONDITIONS:

IMPERVIOUS AREA:
 BUILDINGS s.f.
 ASPHALT s.f.
 CONCRETE s.f.
 TOTAL -0 s.f.

GREEN AREA 151,066 s.f.

"C" EQUIVALENT:
 $0 \text{ s.f.} \times 0.9 + 151,066 \text{ s.f.} \times 0.2 = 0.2 \text{ "c" (EXIST)}$

PRE-DEVELOPMENT RUNOFF:
 $151,066 \text{ s.f.} \times 0.2 \text{ "c"} \times 3.7 \text{ in./hr.} = 9,316 \text{ C.F.}$

POST-DEVELOPMENT CONDITIONS:

IMPERVIOUS AREA: BUILDING: 31,936 SF.
 ASPHALT: 60,424 SF.
 CONCRETE: 1,380 SF.
 RETENTION: 14,080 SF.
 TOTALS: 107,820

GREEN AREA 43,246 s.f.

"C" EQUIVALENT:
 $107,820 \text{ s.f.} \times 0.9 + 43,246 \text{ s.f.} \times 0.2 = 0.70 \text{ "c" (PROP)}$

POST-DEVELOPMENT RUNOFF:
 $151,066 \text{ s.f.} \times 0.7 \text{ "c"} \times 3.7 \text{ in./hr.} = 32,605 \text{ C.F.}$

POST minus PRE:
 $32,605 \text{ c.f.} - 9,316 \text{ c.f.} = 23,289 \text{ c.f.}$

SWFWMD 1st 1/2 INCH:
 $151,066 \text{ s.f.} \times 0.5 = 6,294 \text{ C.F.}$

REQUIRED RETENTION = 23,289 C.F.

PROVIDED RETENTION = 26,982 C.F.

DRAINAGE TIME:
 PER SOIL TEST REPORT WITH SAFETY FACTOR OF 2 = 0.468 hr. / hr.
 RETENTION AREA BOTTOM TREATMENT VOLUME = 2,234 ft. / hr.
 $11,200 \text{ s.f.} \times 2.34 = 26,202 \text{ cf. / hr.}$
 $6,294 \text{ c.f.} \div 26,202 \text{ c.f. / hr.} = 0.24 \text{ HRS.} < 0.468$

ENGINEERING DATA

TOTAL AREA - 151,066 sf / 3.468 ac

WATER AREA - 0

LAND AREA - 151,066 sf

BUILDING AREA - 30,456 sf

PARKING AREA - 59,878 sf

PARKING REQUIRED - PH I - 24 LANES REQUIRE 120 SPACES
 PH II - 8 LANES REQUIRE 40 SPACES
 TOTL 32 160 SPACES

PARKING PROPOSED - 168 SPACES

SIDEWALK AREA - 1,135 sf

GRASS AREA 43,246 sf (NOT INCLUDING RETENTION AREA) = 28.6%

REQUIRED VOLUME - SEE DRAINAGE CALCULATIONS

PROVIDED VOLUME -

ZONING - C-2

SOIL TYPE - SELLERS

SCALE USED IN THIS DRAWING - 1" = 30'

TOTAL SITE ACREAGE 3.468 ACRES / 151,066 SQ. FT.

USAGE OF THIS SITE FOR THE FOLLOWING - BOWLING ALLEY

PROJECT TO BE COMPLETED IN ONE PHASE(S)

EXISTING VEGETATION CONSISTS OF - GRASS AND TREES

THE TALLEST BUILDING ON SITE - MAX 35 FT. / ONE STORIES

ON SITE BURNING - YES / X NO

FUGITIVE DUST TO BE CONTROLLED BY SPRINKLING BY

GENERAL CONTRACTOR

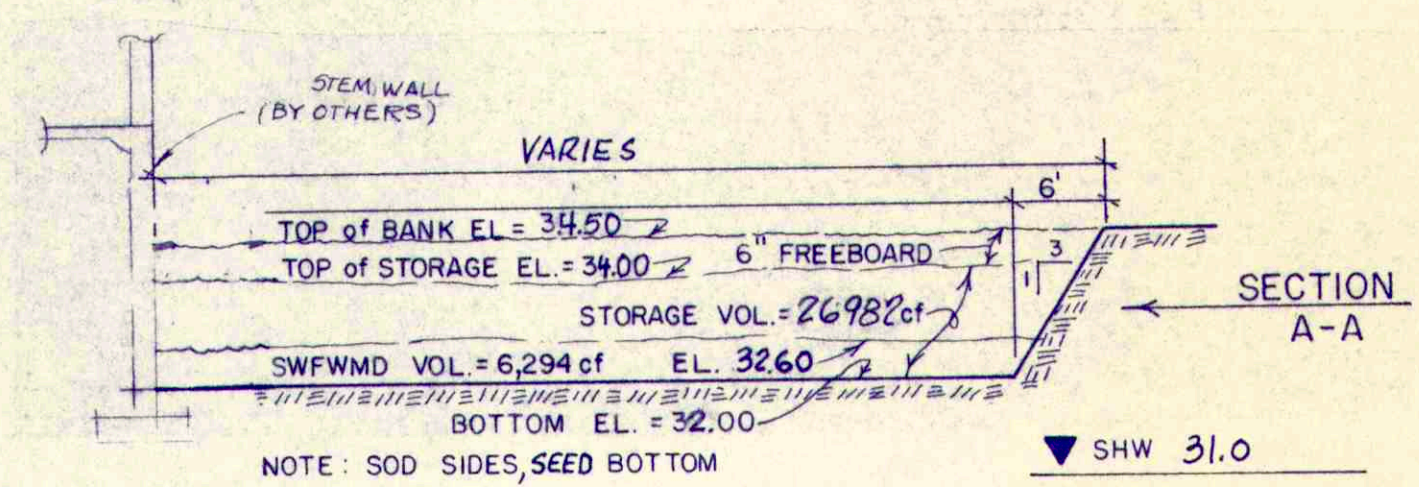
REFUSE COLLECTION AREAS ARE AS NOTED ON DRAWING

UTILITIES: WATER - PASCO COUNTY
 SEWER - PASCO COUNTY
 POWER - FLORIDA POWER CORP.

IRRIGATION TO BE ACCOMPLISHED WITH HOSE-BIBBS WITHIN 50 FEET OF LANDSCAPED MATERIAL.

FLOOD ZONE "C" COMMUNITY PANEL No. 102230-0225C DATED MARCH 15, 1994

THERE IS NO OFF SITE DRAINAGE.



Call Candy!

48 HOURS PRIOR TO ANY EXCAVATION CONTACT G.T.E., CANDY 1-800-282-8881 OR ANY OTHER UTILITY COMPANY THAT MIGHT HAVE LINES IN THE RIGHT-OF-WAY.

SITE SPECIFIC EROSION AND SEDIMENT CONTROL

DETENTION AREAS AND SHALES SHALL BE ROUGHED IN INITIALLY TO GENERATE SITE FILL AND INTERCEPT CONSTRUCTION RUNOFF. CARE SHALL BE EXERCISED TO PREVENT DISTURBANCE TO THE NATURAL VEGETATION IN AREAS NOT PROPOSED FOR IMMEDIATE CONSTRUCTION.

AS SOON AS PRACTICAL, ALL DRESSED SLOPES AND DISTURBED AREAS SHALL BE SOODED OR SEEDED AND MULCHED TO PREVENT EROSION. HAY BALES SHALL BE PLACED AND STAKED ADJACENT TO WETLAND AREAS TO PREVENT SEDIMENT TRANSPORT.

REVISIONS

NO.	BY	DATE

NOTE: PROPERTY ADDRESS IS:

GLOBAL ENGINEERING & MAPPING COMPANY, INC.

ENGINEERS LAND PLANNERS
 P. O. BOX 1162 PH 848-8900 NEW PORT RICHEY, FLORIDA 34656

DETAIL SHEET

SCALE: AS SHOWN DRAWN BY: JRB PROJECT NO: 88-1048 SHEET NO: D-1298
 DATE: MAY - 88 CHECKED BY:

APCO BUILDING SYSTEMS
 120 E. STATE ST. SUITE 101
 OLDSMAR, FLA. 34677 (813) 855-1287