

Beverly Hills
Restaurant

For Lease



453-459 N Canon Dr,
Beverly Hills, CA

 **URBANLIME**
REAL ESTATE





Location

BEVERLY HILLS | CA

Nestled in the heart of Beverly Hills' prestigious Golden Triangle along North Canon Drive just south of Little Santa Monica Blvd, this beautiful turnkey restaurant space offers an unparalleled opportunity for a culinary group to join North Canon's thriving restaurant scene.

The restaurant's design exudes luxury and style, featuring a harmonious blend of classic and contemporary elements. The rich color palette, plush furnishings, and elegant chandeliers create a sophisticated ambiance. The frontage along Canon boasts an enclosed patio, while the interior offers 4,731 sf of space, complemented by an additional fully improved 1,409 sf back patio.



Details



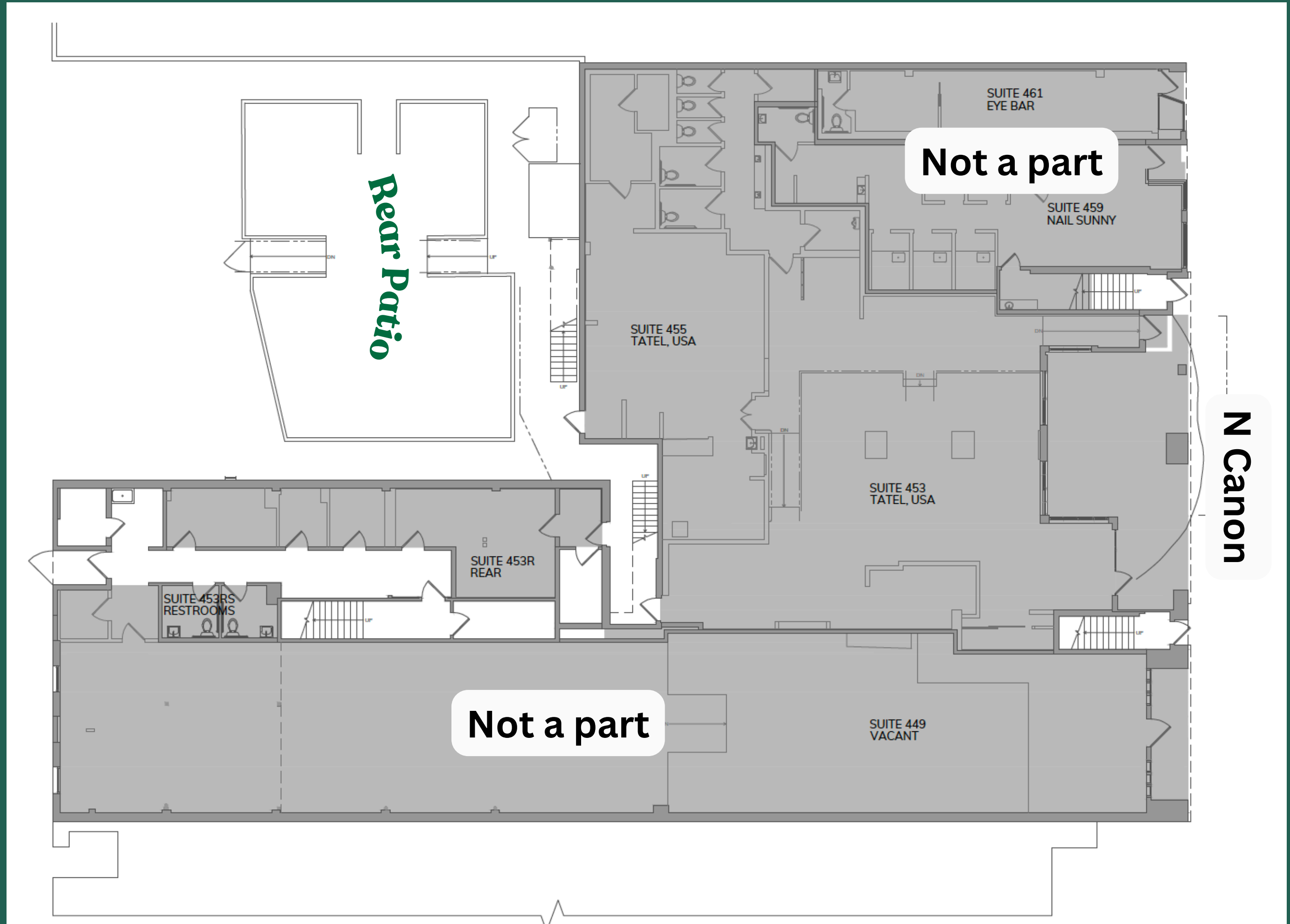
- Size: 4,731 sf with 1,409 sf back patio
- Rent: Please inquire with broker.
- NNN: \$1 psf
- Entitlements allow for full liquor with live entertainment.
- Furniture, fixtures and equipment: Please Inquire with broker.
- The location is a hub that attracts locals and tourists alike.
- Convenient 2 hour free city parking lot steps away.
- Incredible co-tenancy on N Canon Dr
- Next door to the high performing Wally's restaurant and steps from Chef Evan Funke restaurant and rooftop lounge.
- Other notable tenants on the street Include: Negroni's, Il Pastaio, Xi'an Beverly Hills, Caffè Roma, Mastro's, Sugarfish, the Maybourne Hotel, Spago and Nusr-Et Steakhouse.



Floorplan

Interior:
Suite 455 & 453 + 453 R
4,731 sf

Exterior:
Rear Patio
1,409 sf



Neighborhood



NEIGHBORING TENANTS

1. Wally's
2. Il Tramezzino
3. Edelweiss Chocolates
4. La Scala
5. The Bar Room
6. Porta Via
7. Euro Caffè
8. Negroni
9. E Baldi
10. Mulberry St Pizzeria
11. Erewhon
12. Il Pastaio
13. Village on Canon
14. The Penthouse at Mastro's
15. Spago
16. Whole Foods
17. Il Fornaio
18. Funke
19. Alfred Coffee
20. Nate'n Al's
21. Xi'an Beverly Hills
22. Caffè Roma
23. Via Alloro
24. Cantina Frida
25. Sugarfish
26. Sweet Beverly Cafe
27. Avra
28. Nusr-Et Steakhouse



LORENA TOMB

213.277.7247 x 1

Lorena@urbanlimere.com

BRE# 01894475

DAN FAGAN

310.430.3436

Danfagan@urbanlimere.com

DRE# 01363082

RICHARD CHENG

213.277.7247 x 8

Richard@urbanlimere.com

DRE# 02055718