

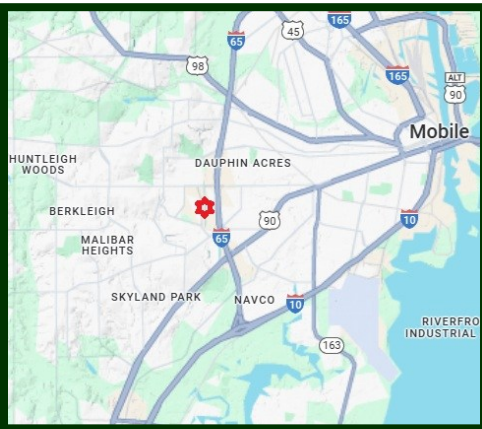


Commercial and Industrial Real Estate
Sales and Leasing
Property Management

Joey Betbeze
3345 Halls Mill Road
Mobile, Alabama 36606

Office: 251-476-4111
Cell: 251-554-8145

JoeyBetbeze@BetbezeRealty.com
www.BetbezeRealty.com



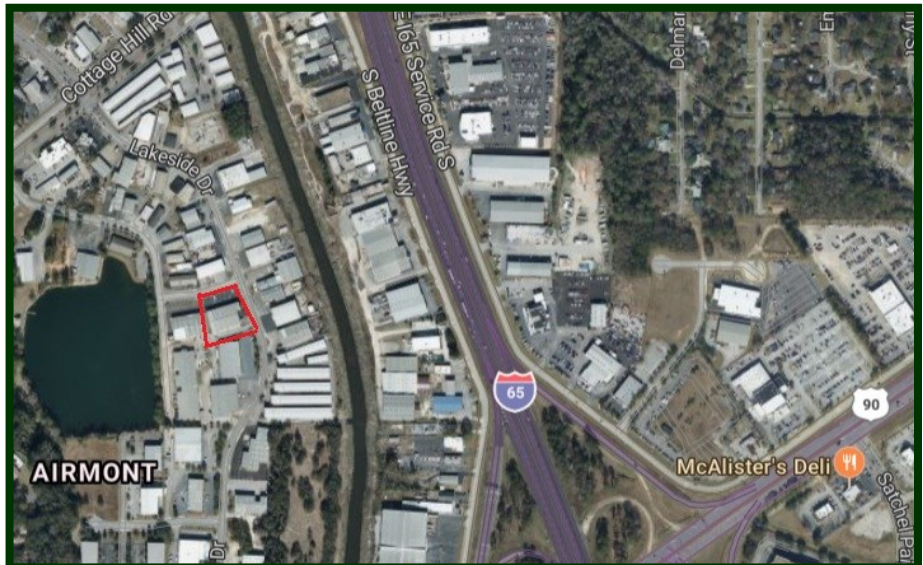
- Metal Construction.
- 3,052 S.F. Office Space.
- 1,560 S.F. Warehouse Space.
- 1- 12' x 10' Ground Level O/H Door.
- 1- 8' x 10' Dock High O/H Door.
- 1- 12' x 10' Dock High O/H Door.
- 14' Eave Height.
- Zoned B-3.
- **\$3,200.00/Mo. NN**

FOR LEASE 4,612 S.F. OFFICE/WAREHOUSE

**750 Lakeside Drive Suite A
MOBILE, ALABAMA 36693**

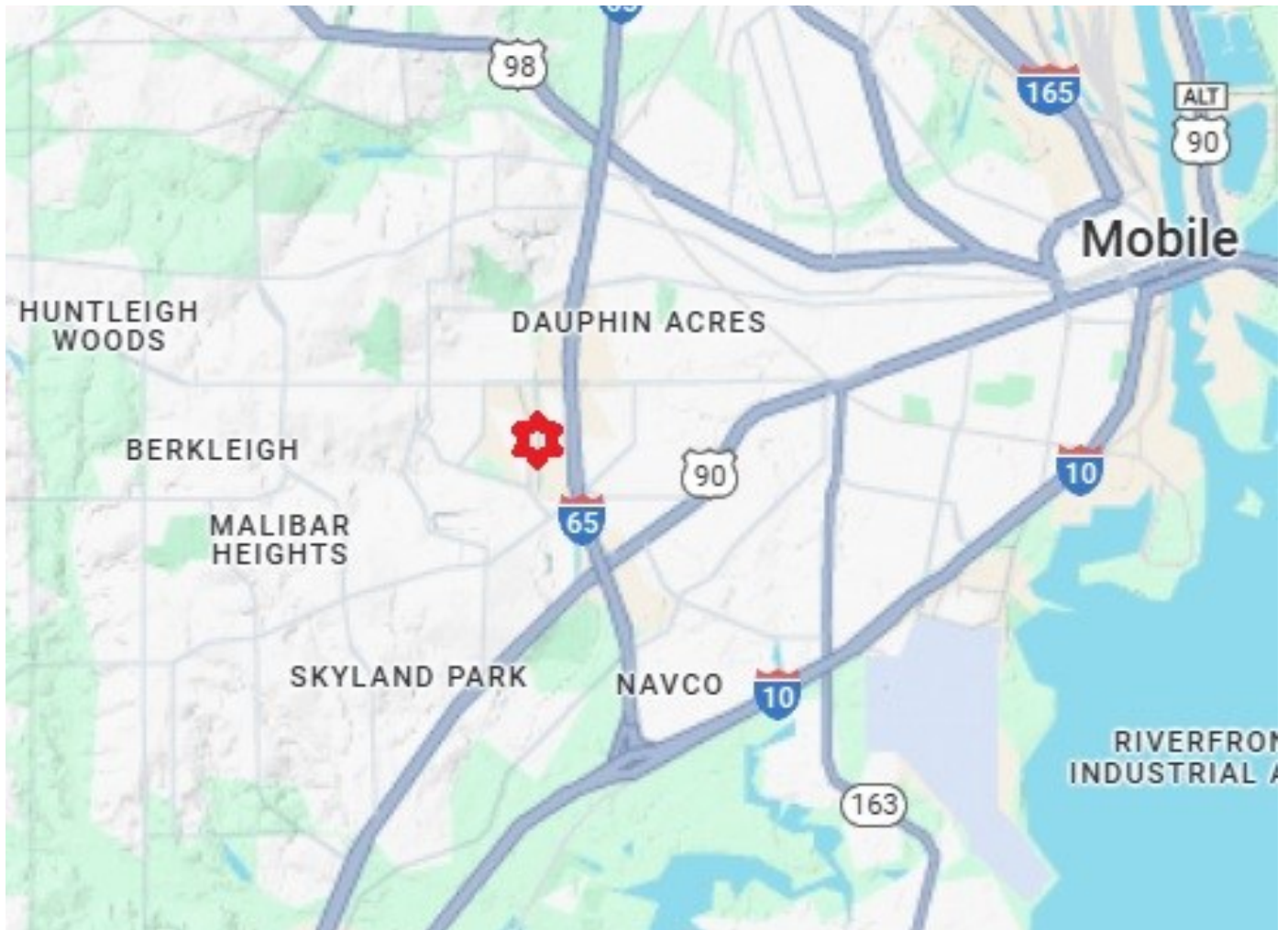


Approximately 4,612 square foot office/warehouse space located in a multi-tenant building . Approximately 3,052 square feet of heated and cooled office space. Approximately 1,560 Square Feet of open warehouse space.

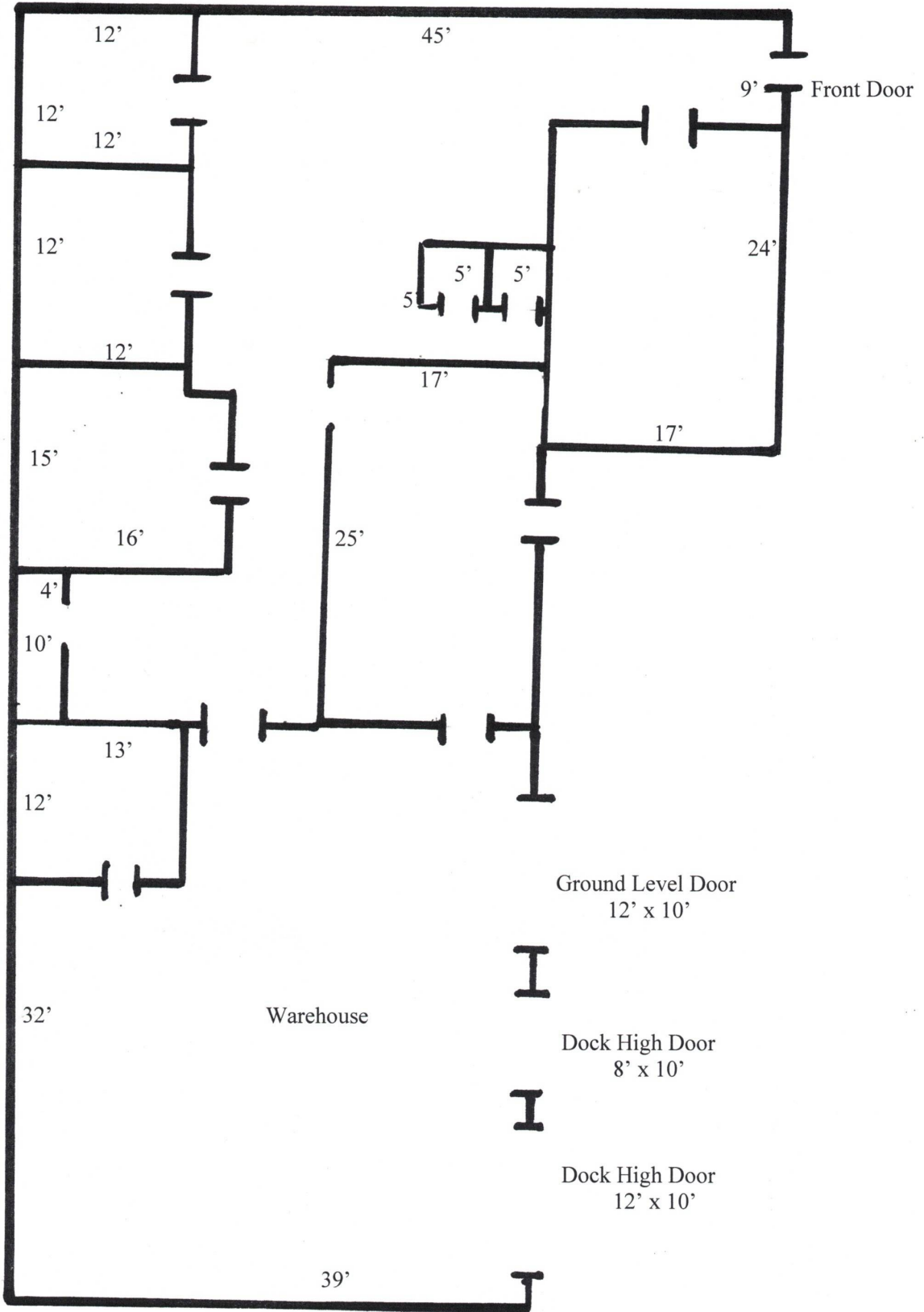


Located on the southwest corner of Lakeside Drive and lakeside Drive South in the center of Mobile approximately 1/2 Mile from the from the intersection of Government Blvd. and Interstate-65.

The information above has been obtained from sources believed reliable. While we do not doubt its accuracy we have not verified it and make no guarantee, warranty or representation about it. It is your responsibility to independently confirm its accuracy and completeness. Any projections, opinions, assumptions, or estimates used are for example only and do not represent the current or future performance of the property. The value of this transaction to you depends on tax and other factors which should be evaluated by your tax, financial, and legal advisors. You and your advisors should conduct a careful, independent investigation of the property to determine to your satisfaction the suitability of the property for your needs.



750 Lakeside Drive Suite A



All Dimensions Are Approximate







