

4600 W 90TH TER. PRAIRIE  
VILLAGE, KS

**THE  
JAMES**  
PROFESSIONAL



## PROPERTY SUMMARY

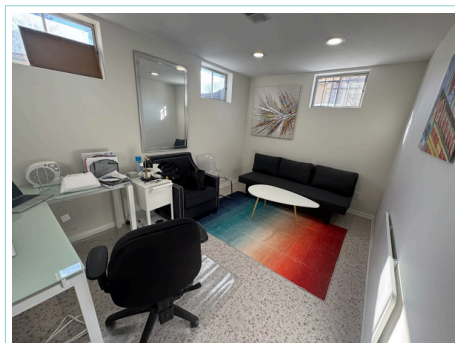
The James Professional is a newly remodeled boutique office building, located in the heart of Prairie Village, KS. The building offers an exceptional opportunity for entrepreneurs, small business owners, and service providers to cultivate their own distinctive workspaces. Designed to encourage community, creativity and positive energy, the James Professional is ready to be the space where your business thrives.

## BUILDING HIGHLIGHTS

- Individual office / retail suites
- On-site mail delivery
- 24/7 access
- Common area kitchenette with refrigerator
- Walkable to Meadowbrook Park and Franklin Park
- Beautiful original midcentury features

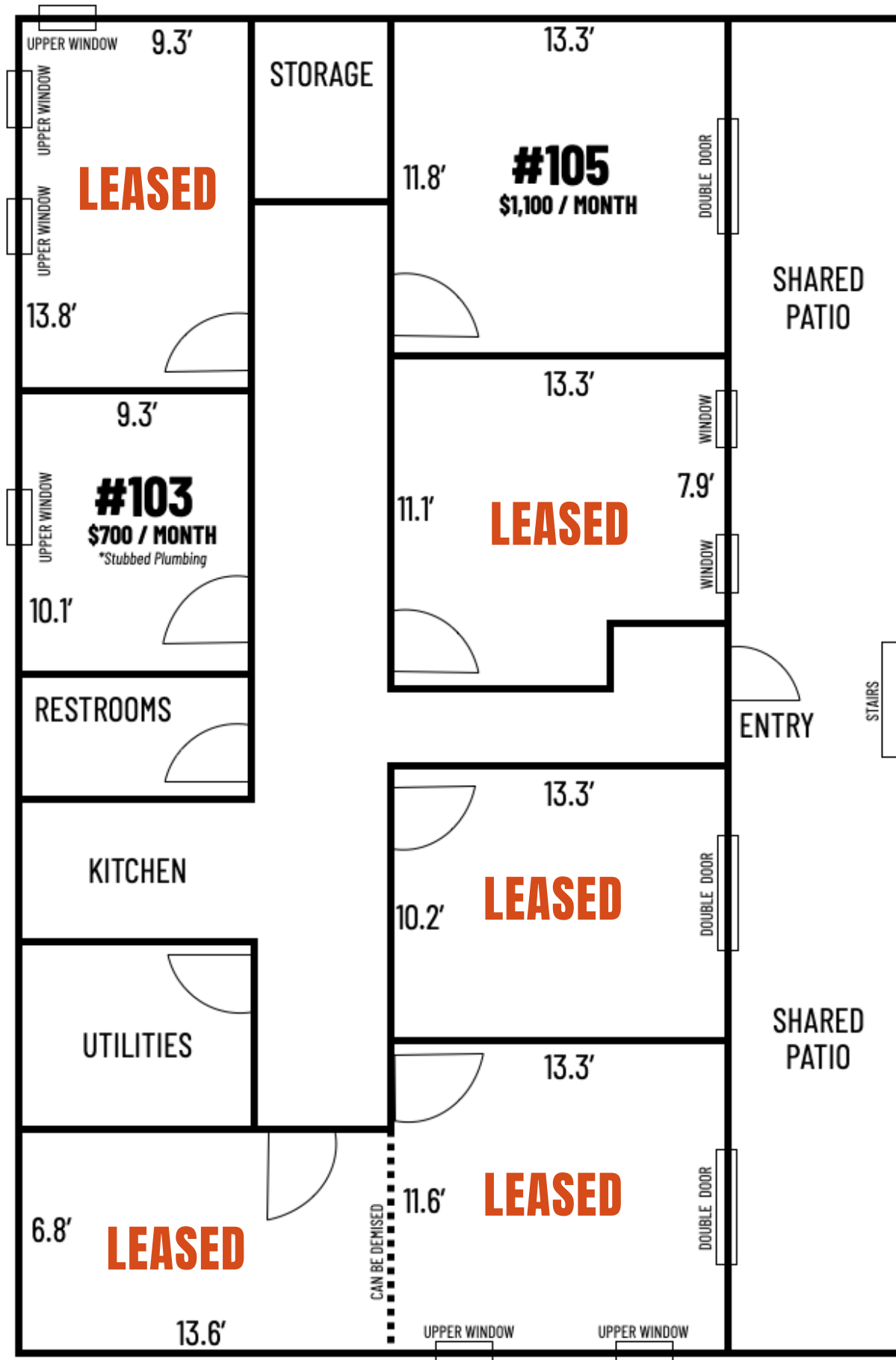
## SUITE OPTIONS

- Options with private suite entrance
- Sink availability in suite
- Sliding glass doors to exterior deck/patio
- Vaulted ceiling and skylights
- Midcentury features in some suites
- Starting at \$700/mo



LYNETTE RUSS 816.590.7890  
LRUSS@NORTHPOINTKC.COM

MONICA ENLOE 913.961.5314  
MONICA@SHAWVERGROUP.COM



**PATIO FLOOR**

