



# FOR LEASE

# 3250 N Post Road Bldg 300

Indianapolis, IN 46226



## PROPERTY HIGHLIGHTS

- 25,884 - 36,117 SF industrial space available
- 25' clear height
- Numerous amenities nearby
- Ample parking for employees and guests

[www.Halakar.com](http://www.Halakar.com)

Liz DeKoninck | 317.536.0093 | [liz@halakar.com](mailto:liz@halakar.com)  
Colton Snodgrass, CCIM | 317.536.0218 | [csnodgrass@halakar.com](mailto:csnodgrass@halakar.com)  
Joshua D. Abrams | 317.324.1613 | [Joshua@halakar.com](mailto:Joshua@halakar.com)

# 3250 N Post Road Bldg 300

Indianapolis, IN 46226

## FOR LEASE

CLEAN FLEX SPACE AVAILABLE



### OFFERING SUMMARY

Lease Rate:	Call for rates
Lease Type:	NNN
Date Available:	Varies by Suite
Building Size:	86,126 SF
Available SF:	25,884 - 36,117 SF
Year Built:	1987
Zoning:	I-3
Sprinklers:	Yes

### PROPERTY OVERVIEW

This versatile front load warehouse offering on the east side is great for a variety of businesses. Quick interstate access to I-70 and I-465. Ample dock bays, close proximity to labor force, and 25' clear height. Call today for more information and to schedule a private tour!

AVAILABLE SPACES	SPACE SIZE	OFFICE SPACE	DOCKS	DRIVE-INS	OPEX	CLEAR HEIGHT
Suite 309	36,117 SF	1,179	2	1	\$2.03	25'
Suite 345	25,884 SF	539	7	1	\$2.03	25'



Liz DeKoninck | 317.536.0093 | liz@halakar.com

Colton Snodgrass, CCIM | 317.536.0218 | csnodgrass@halakar.com

Joshua D. Abrams | 317.324.1613 | Joshua@halakar.com



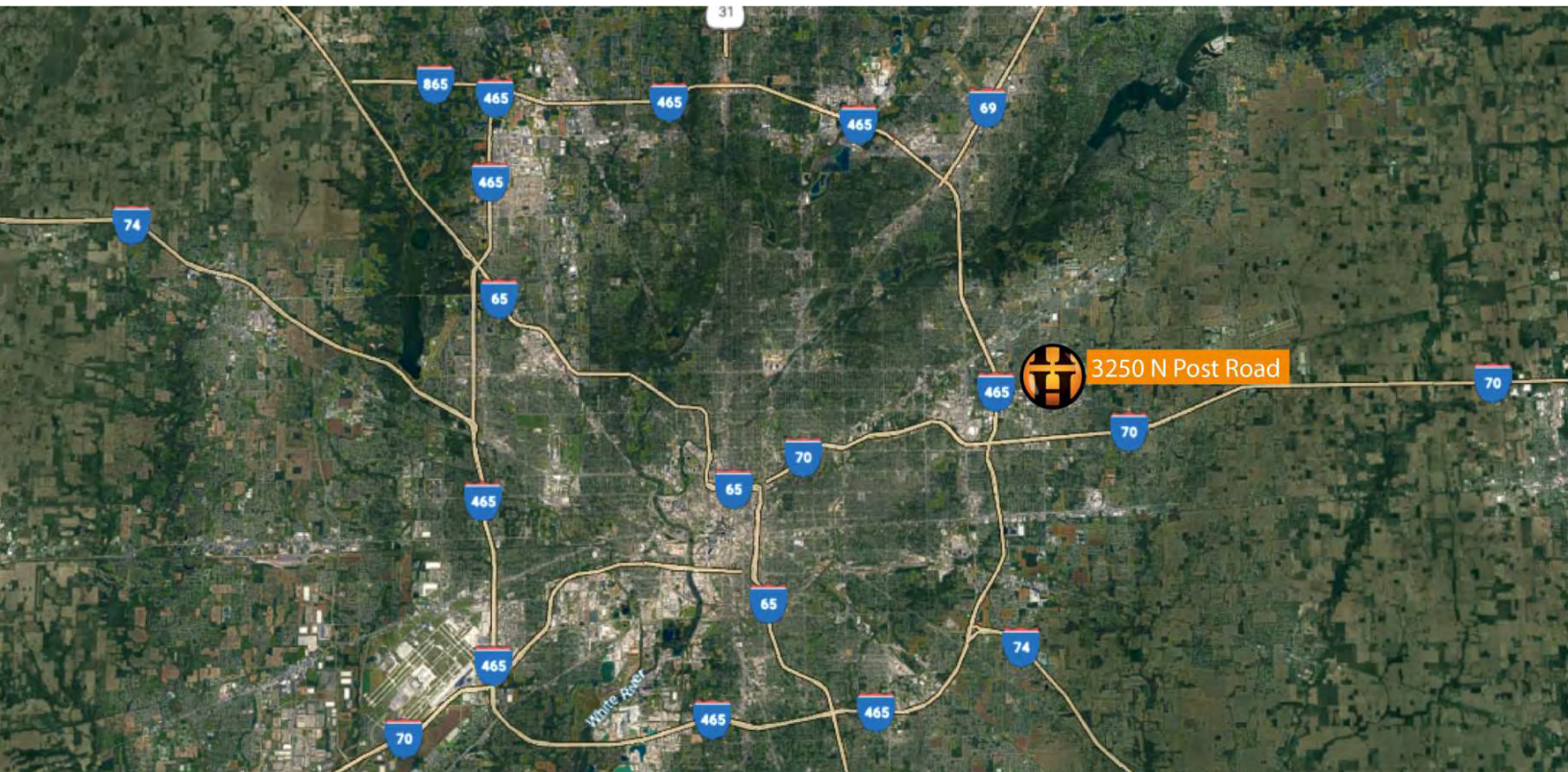
www.Halakar.com

# 3250 N Post Road Bldg 300

Indianapolis, IN 46226

## FOR LEASE

### ADDITIONAL PHOTOS



Liz DeKoning | 317.536.0093 | [liz@halakar.com](mailto:liz@halakar.com)

Colton Snodgrass, CCIM | 317.536.0218 | [csnodgrass@halakar.com](mailto:csnodgrass@halakar.com)

Joshua D. Abrams | 317.324.1613 | [Joshua@halakar.com](mailto:Joshua@halakar.com)



[www.Halakar.com](http://www.Halakar.com)