

PREMIER OFFICE AT LEGACY TOWER

1 Bausch and Lomb Place, Rochester, NY 14604



ADAM BORRELL

Senior Leasing Executive

(585) 615-3593

aborrell@buckprop.com

SQUARE FOOTAGE

1,369 SF

ABOUT THE SPACE

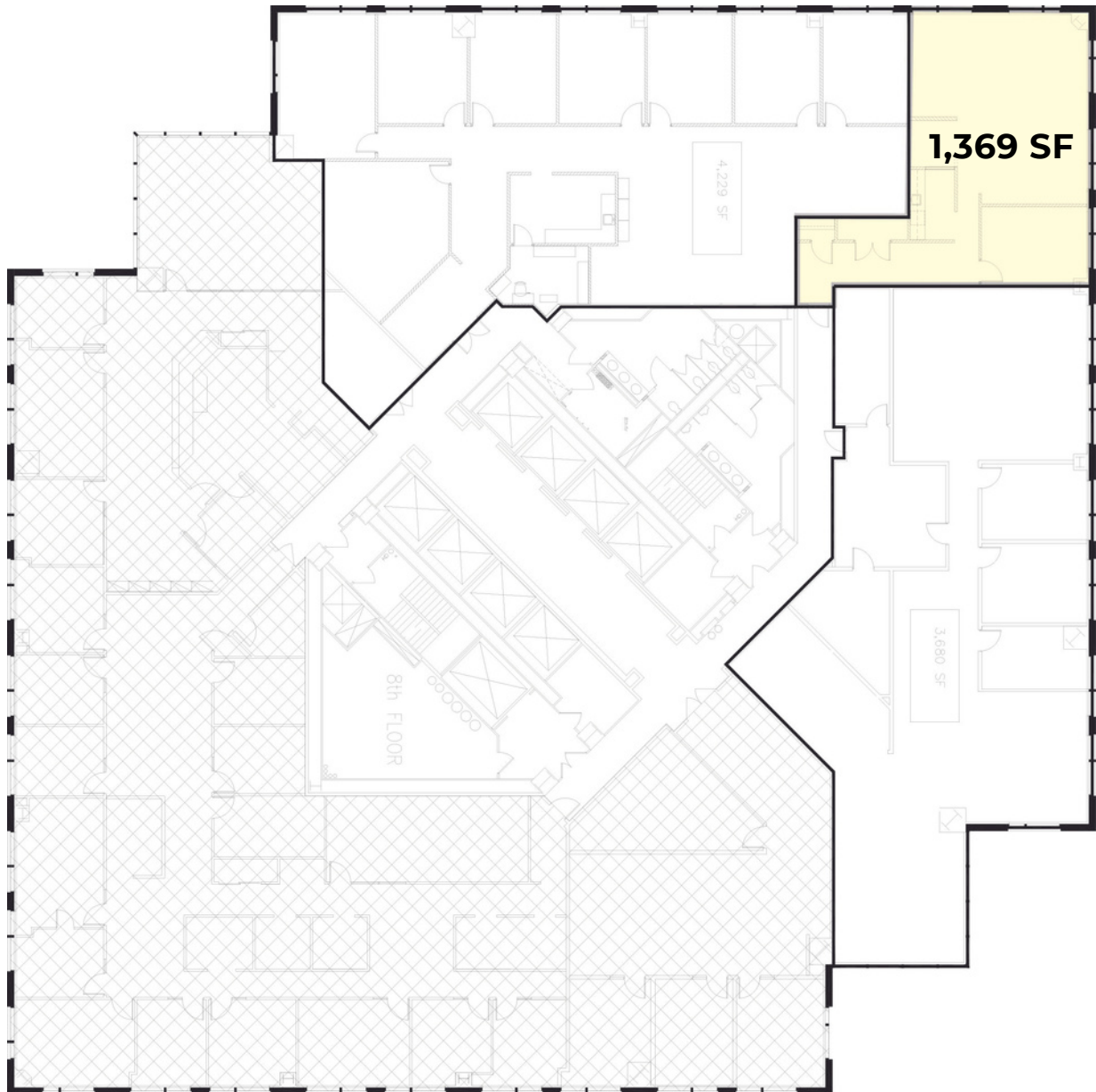
This corner office space features a mostly open floor plan, with one private office, a private kitchen and plenty of natural light. The class A office building is known for its dramatic design, granite façade and 11,000 square foot glass-enclosed Wintergarden. Extensive amenities include a grab-and-go café, 4,500 square foot fitness center, and multiple training/meeting rooms.



BUCKINGHAM PROPERTIES

PREMIER OFFICE AT LEGACY TOWER

1 Bausch and Lomb Place, Rochester, NY 14604



BUCKINGHAM PROPERTIES

(585) 295-9500 | www.buckprop.com | 259 Alexander Street, Rochester, NY